

22.8+/- Acres Proposed Commercial Corner of AL Hwy 119 and Hwy 22

\$6,500,000

Ready for development

7011 Hwy 22, Montevallo, AL 35115

Bobby Bynum

205.500.1188

bobby@bobbybynum.com

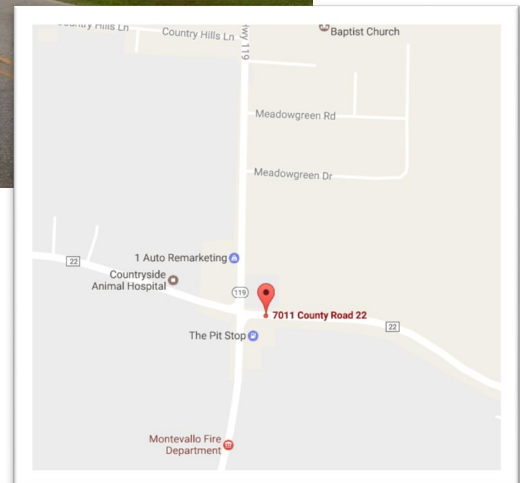
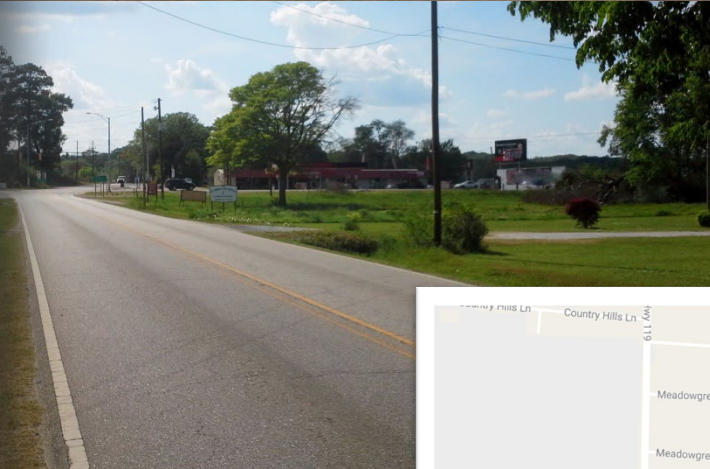
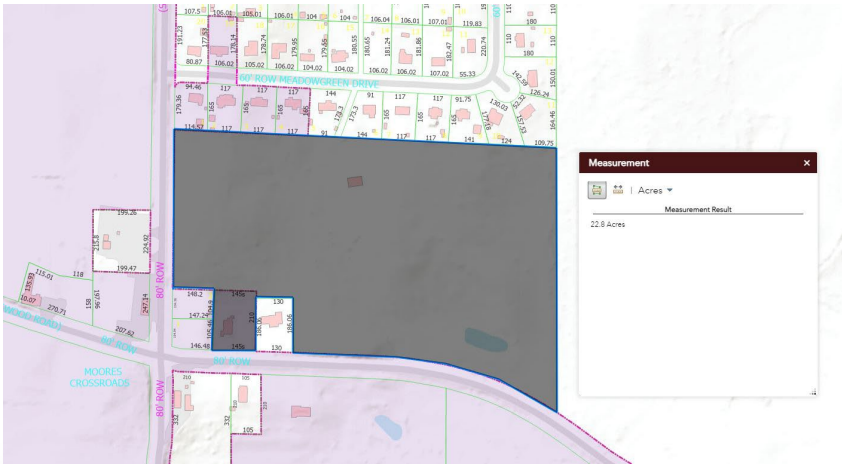


- Tremendous Development Potential, City of Montevallo, B2 Retail zoning.
- Approx. 555 ft frontage on Hwy 119
- Approx. 1,250 ft frontage on Hwy 22
- All utilities available, sewer is on site.
- Located at the Moore's Crossroad intersection near the American Village Museum. Traffic signal in place at this very busy intersection.
- Major intersection improvement project currently underway.

Possible uses:

- Retail Development
- Neighborhood business

INTEGRITY
COMMERCIAL
INTEGRITY REAL ESTATE



INTEGRITY
 COMMERCIAL
 INTEGRITY REAL ESTATE

Bobby Bynum
205.500.1188
 bobby@bobbybynum.com

All information provided is deemed reliable but is not guaranteed and should be independently verified. All information is subject to change without notice including withdrawal of this listing. No warranty or representation is made as to the condition of the property.