

HALSEY PLACE

313 DATURA STREET, WEST PALM BEACH, FL 33401



Office/Retail Building For Lease



PROPERTY OVERVIEW

Halsey Place is a three-story, mixed-use office/retail building. Halsey Place was originally constructed as the Hotel Halsey in 1924. The property was renovated in 2015 with ground floor office/retail and offices on the second & third floors. The property was completely renovated in 2019 and offers the potential for a restaurant with a rooftop bar in the Carriage House which is located in the back of the main building with access from the alley.

LOCATION OVERVIEW

Halsey Place is in the Flagler Financial District in the heart of Downtown West Palm Beach. The property is located one block from the Intracoastal Waterway and one block from Brightline. Brightline is an express, intercity higher-speed rail system in Florida with rail service between Orlando and Miami, with stops in West Palm Beach, Boca Raton, Fort Lauderdale, and Aventura.

PROPERTY HIGHLIGHTS

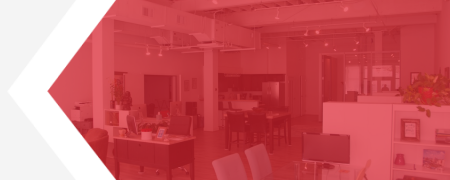
- 21,500 SF Mixed-Use building
- Completely renovated in 2019
- One block to the Brightline express train to Orlando, Ft Lauderdale, Boca Raton & Miami
- Located in Downtown WPB Flagler Financial District
- Just over a block to the Intracoastal Waterway



David W. Knott
561.662.5758
dknott@kdcre.com

HALSEY PLACE

313 DATURA STREET, WEST PALM BEACH, FL 33401



Suite 300 - For Lease



LEASE INFORMATION

Lease Type:	NNN (\$12.50 SF)	Lease Term:	60 months
Total Space:	4,870 SF	Lease Rate:	\$37.00 SF

AVAILABLE SPACES

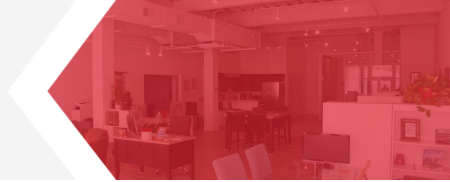
SUITE	TENANT	SIZE (SF)	LEASE TYPE	LEASE RATE	DESCRIPTION
Suite 300	Available	4,870 SF	NNN	\$37.00 SF/yr	8 perimeter offices, conference room, large open area, kitchenette, and two restrooms.



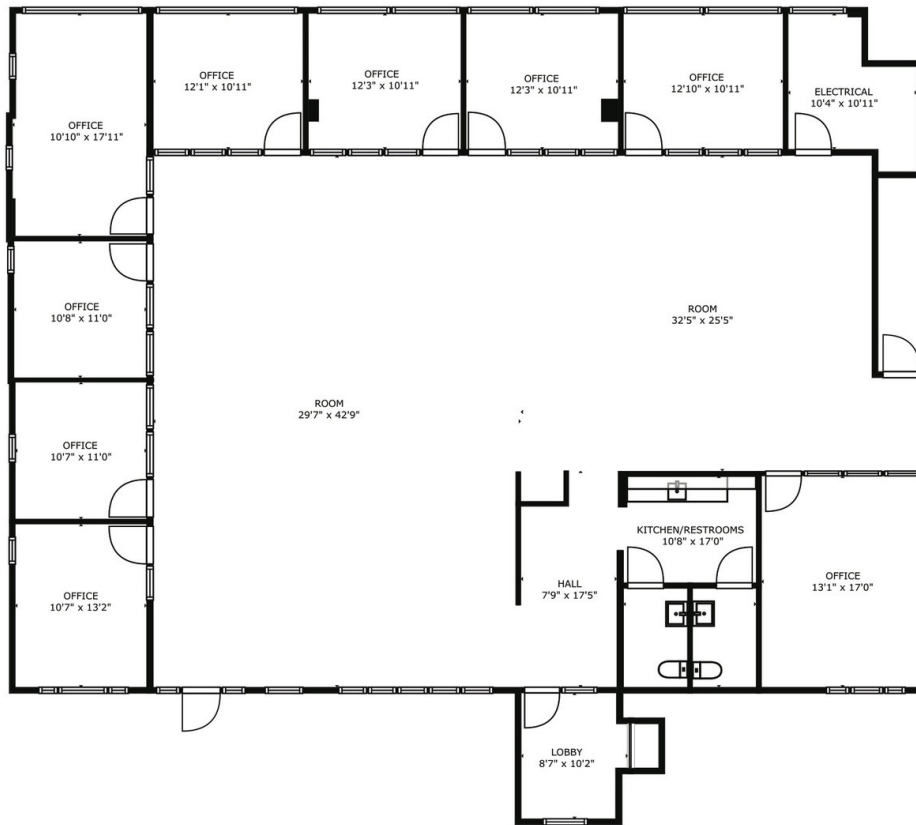
David W. Knott
561.662.5758
dknott@kdcre.com

HALSEY PLACE

313 DATURA STREET, WEST PALM BEACH, FL 33401



Suite 300 - 4,870 SF - Floor Plan



313 DATURA ST WEST PALM BEACH FL 33401 USA

PRODUCTION DATE
JAN 22 2019

AMERISVSPACES.CO

POWERED BY
matterport



OFFERED BY



KD COMMERCIAL
REAL ESTATE

DAVID W. KNOTT
O: 561.408.8100
C: 561.662.5758
DKNOTT@KDCRE.COM



HALSEY PLACE

WEST PALM BEACH



KD COMMERCIAL
REAL ESTATE

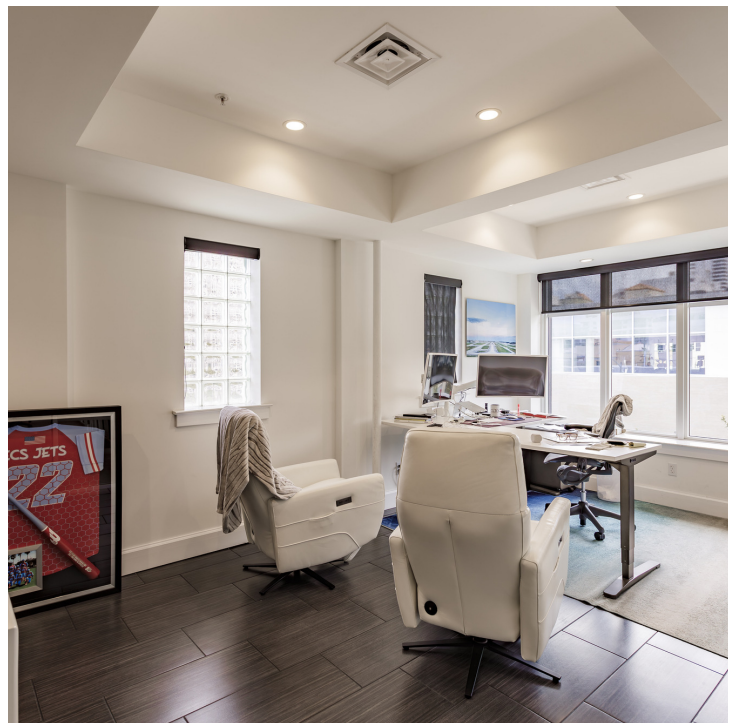
David W. Knott
561.662.5758
dknott@kdcre.com

HALSEY PLACE

313 DATURA STREET, WEST PALM BEACH, FL 33401



Suite 300 - Interior Photos



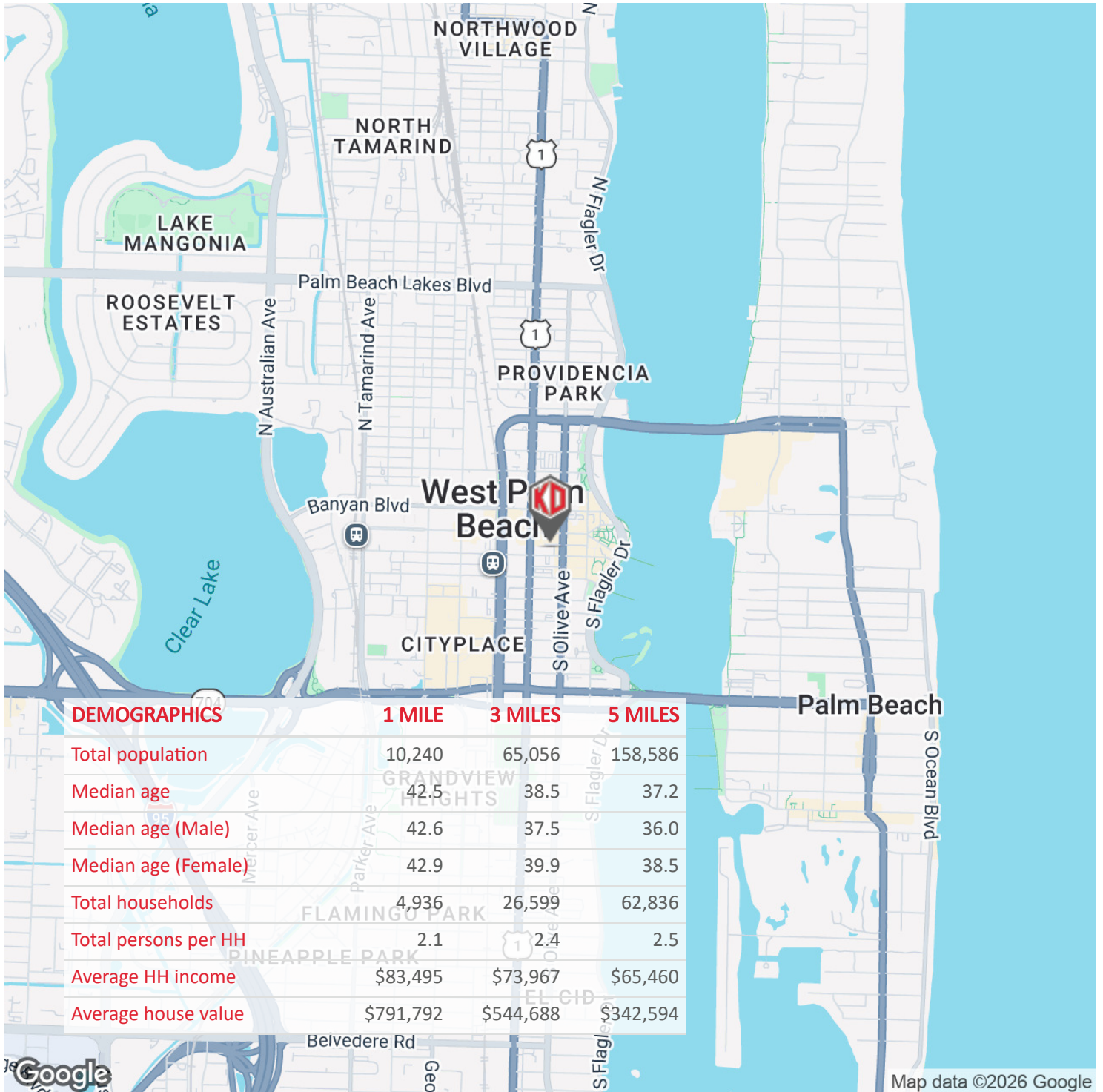
David W. Knott
561.662.5758
dknott@kdcre.com

HALSEY PLACE

313 DATURA STREET, WEST PALM BEACH, FL 33401



Downtown West Palm Beach



David W. Knott
561.662.5758
dknott@kdcre.com

No warranty or representation, express or implied, is made as to the accuracy or completeness of the information contained herein, and is submitted subject to errors, omissions, change of terms or conditions, withdrawal without notice, and to any special listing conditions imposed by the property owner(s). Additionally, no representation is made as to the condition of the property in question.