



# For lease

Premier office space  
available in Urbandale

**3809 109th Street  
Urbandale, IA 50322**

## Property overview

Availability:

- 1st floor: 2,073 SF
- 2nd floor: 2,855 SF

Lease rate: \$13.50 Modified Gross

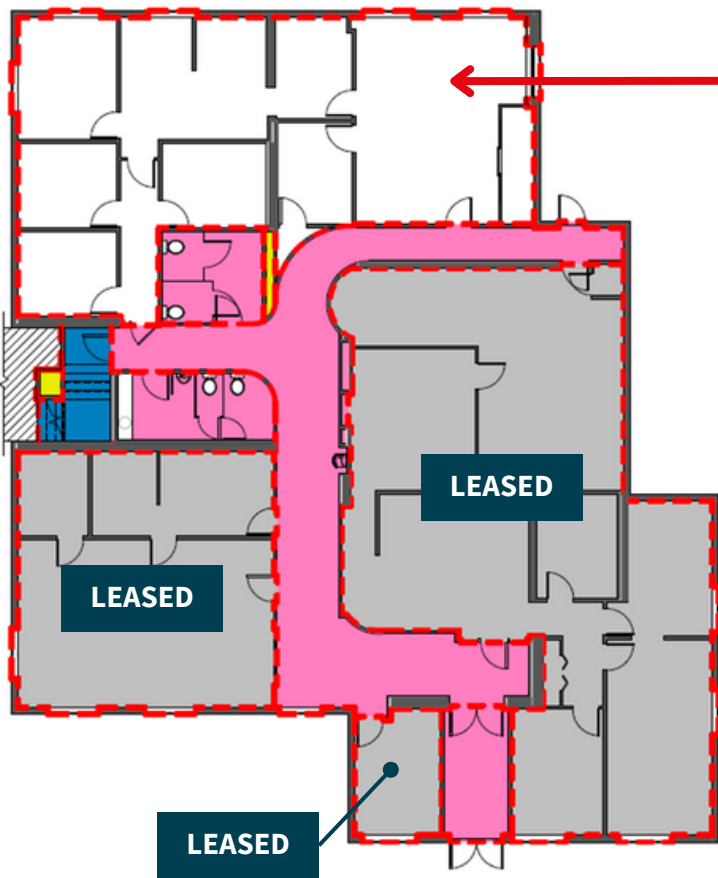
- Quick access to Interstate 80/35
- Located off Douglas Avenue
- Onsite parking available
- Located near multiple single-family and multi-family housing developments, retail, office, commercial, and hospitality.

**Justin Lossner, CCIM, SIOR**  
Senior Managing Director  
Justin.Lossner@jll.com  
+1 515 371 0846

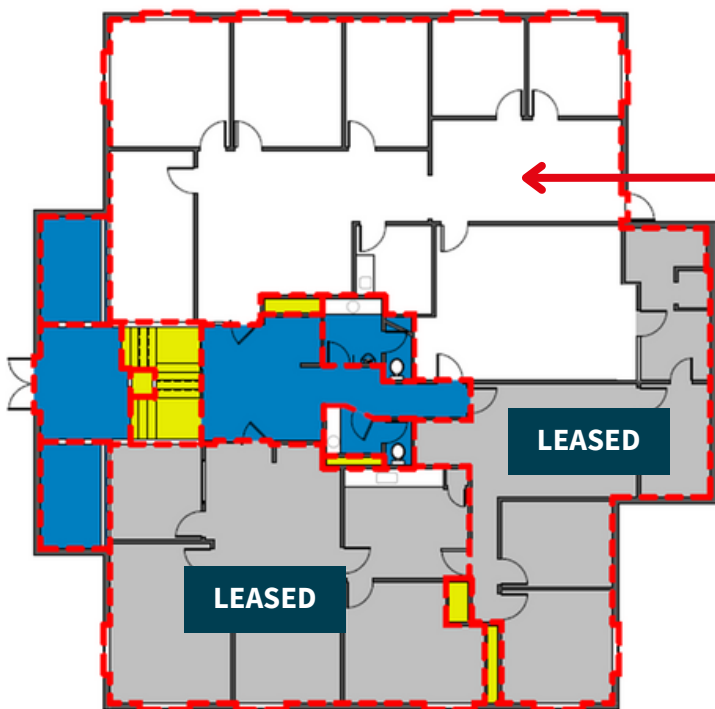
**Lucas Hedstrom**  
Senior Associate  
Lucas.Hedstrom@jll.com  
+1 515 564 9269

[jll.com/des-moines](https://www.jll.com/des-moines)  
Jones Lang LaSalle Americas, Inc.

# Floor plan



**2,073 RSF**  
*1st Floor*



**2,855 RSF**  
*2nd Floor*

# For lease

3809 109th Street | Urbandale, IA 50322



**Justin Lossner, CCIM, SIOR**  
Senior Managing Director  
Justin.Lossner@jll.com  
+1 515 371 0846

**Lucas Hedstrom**  
Senior Associate  
Lucas.Hedstrom@jll.com  
+1 515 564 9269

[jll.com/des-moines](http://jll.com/des-moines)

Jones Lang LaSalle Americas, Inc.

