

**LEGEND**

- - - COMMUNITY TRAIL
- LINEAR PARK

---

- NORTH POWER CENTER  
COMMERCIAL STORES AND PADS  
300,000 SF
- SOUTH POWER CENTER  
COMMERCIAL STORES AND PADS  
350,000 SF
- LIFESTYLE STORES & RESTAURANTS  
350,000 SF  
RESTAURANTS NOT TO EXCEED 100,000 SF

---

- TRANSIT STATION  
MOVIE THEATER - 2,700 SEATS  
PARKING: 1 STALL / 4 SEATS
- OFFICE AND CIVIC USE  
160,000 SF  
PARKING: 4 STALLS / 1,000 SF
- MULTIFAMILY RESIDENTIAL HOUSING  
65 DU/AC **660 UNITS**  
PARKING: 1.5 STALLS / UNIT
- HOTEL  
94,500 SF  
120 KEYS

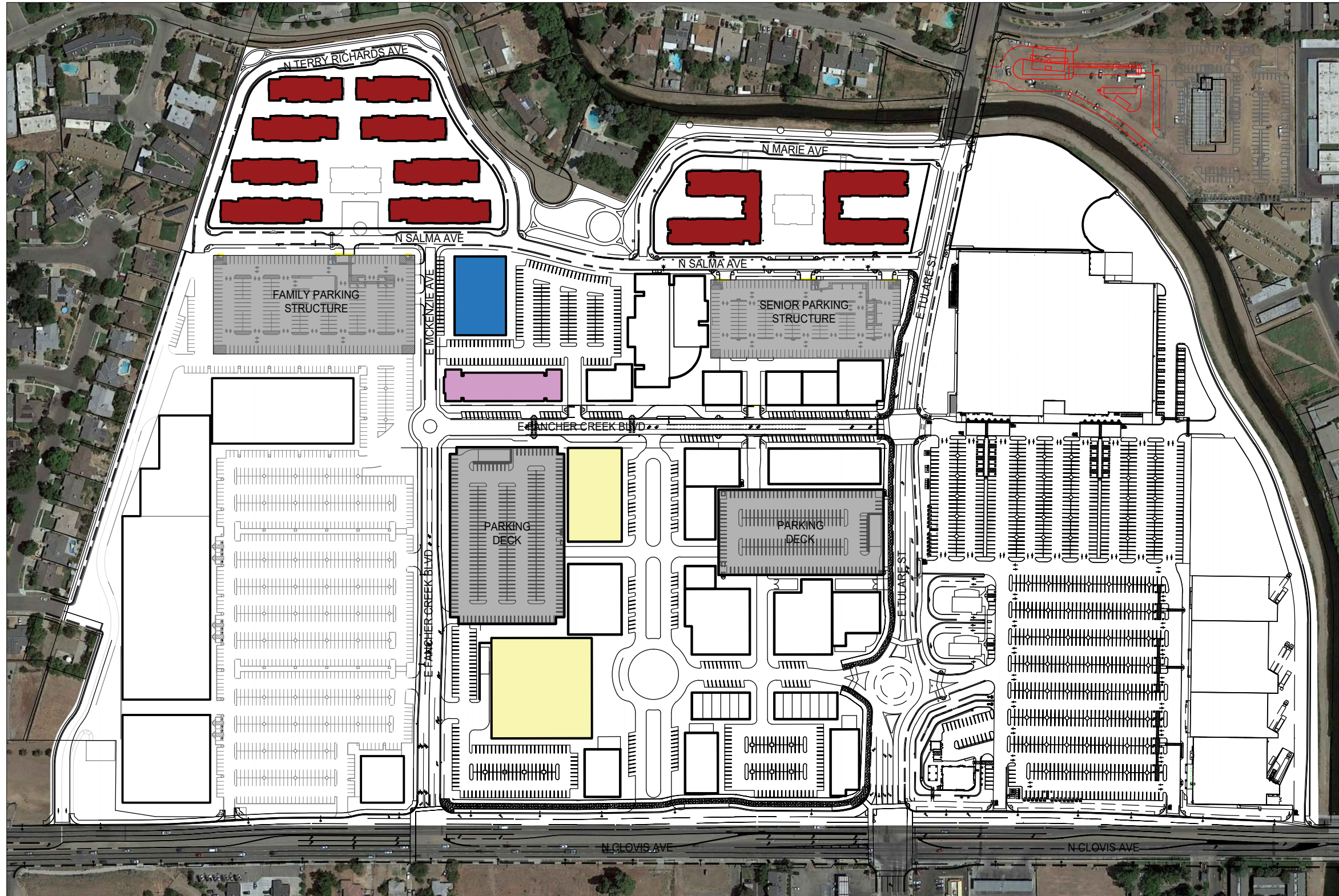
---

- PLAZA, RECREATION, AND PARK SPACE  
8 ACRES

*THE SHAPE AND LOCATIONS OF THE BUILDINGS CAN VARY. THE OVERALL BUILDING SIZE IS NOT TO EXCEED THE STATED SQUARE FOOTAGES.*



GROUND FLOOR



SECOND FLOOR

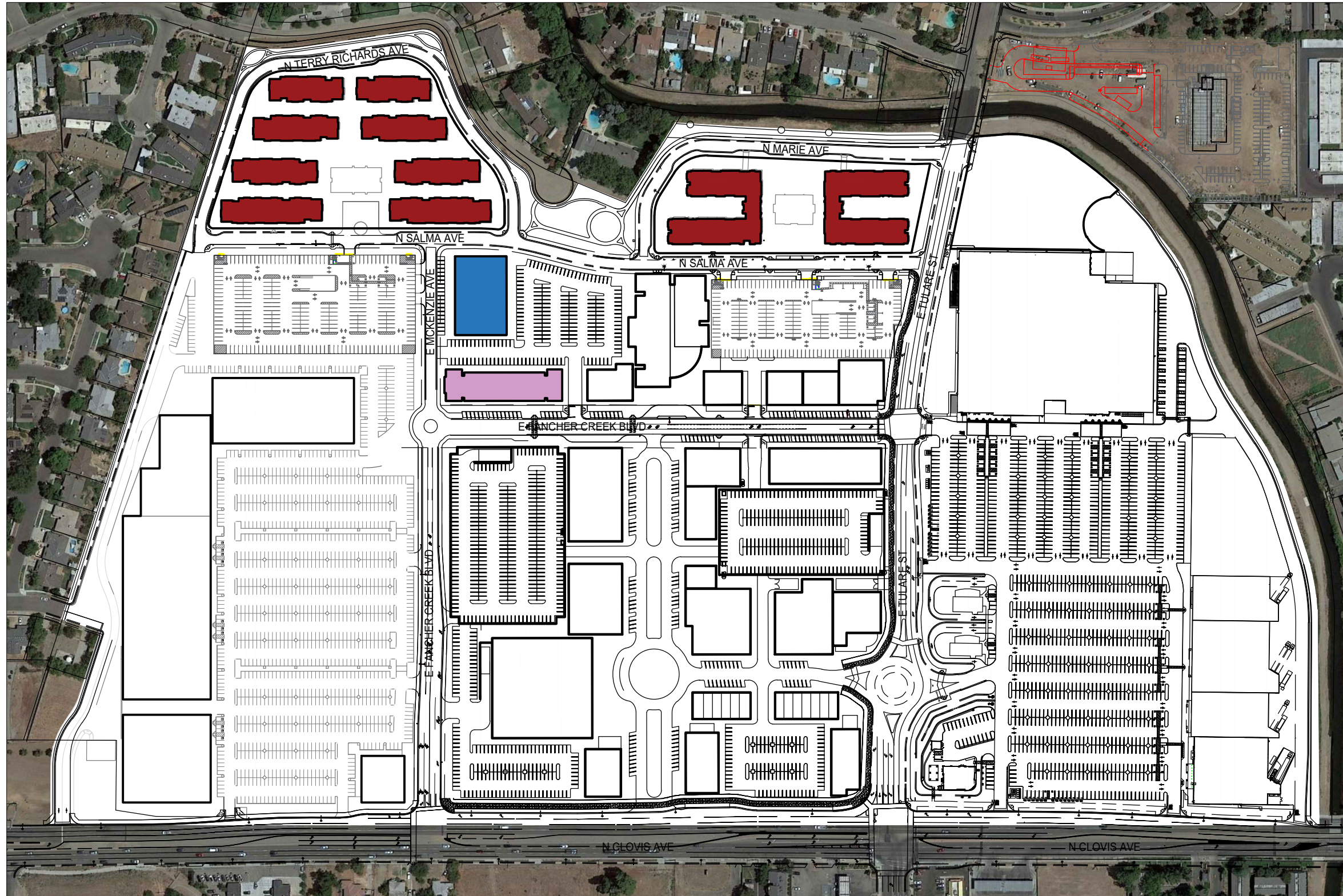
LEGEND

- LIFESTYLE STORES & RESTAURANTS
- OFFICE AND CIVIC USE
- MULTIFAMILY RESIDENTIAL HOUSING
- HOTEL

-----




THE SHAPE AND LOCATIONS OF THE BUILDINGS CAN VARY. THE OVERALL BUILDING SIZE IS NOT TO EXCEED THE STATED SQUARE FOOTAGES.



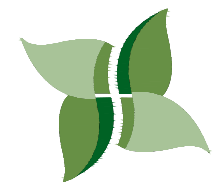


THIRD FLOOR

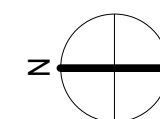
LEGEND

-  OFFICE
-  MULTIFAMILY RESIDENTIAL HOUSING
-  HOTEL

THE SHAPE AND LOCATIONS OF THE BUILDINGS CAN VARY. THE OVERALL BUILDING SIZE IS NOT TO EXCEED THE STATED SQUARE FOOTAGES.



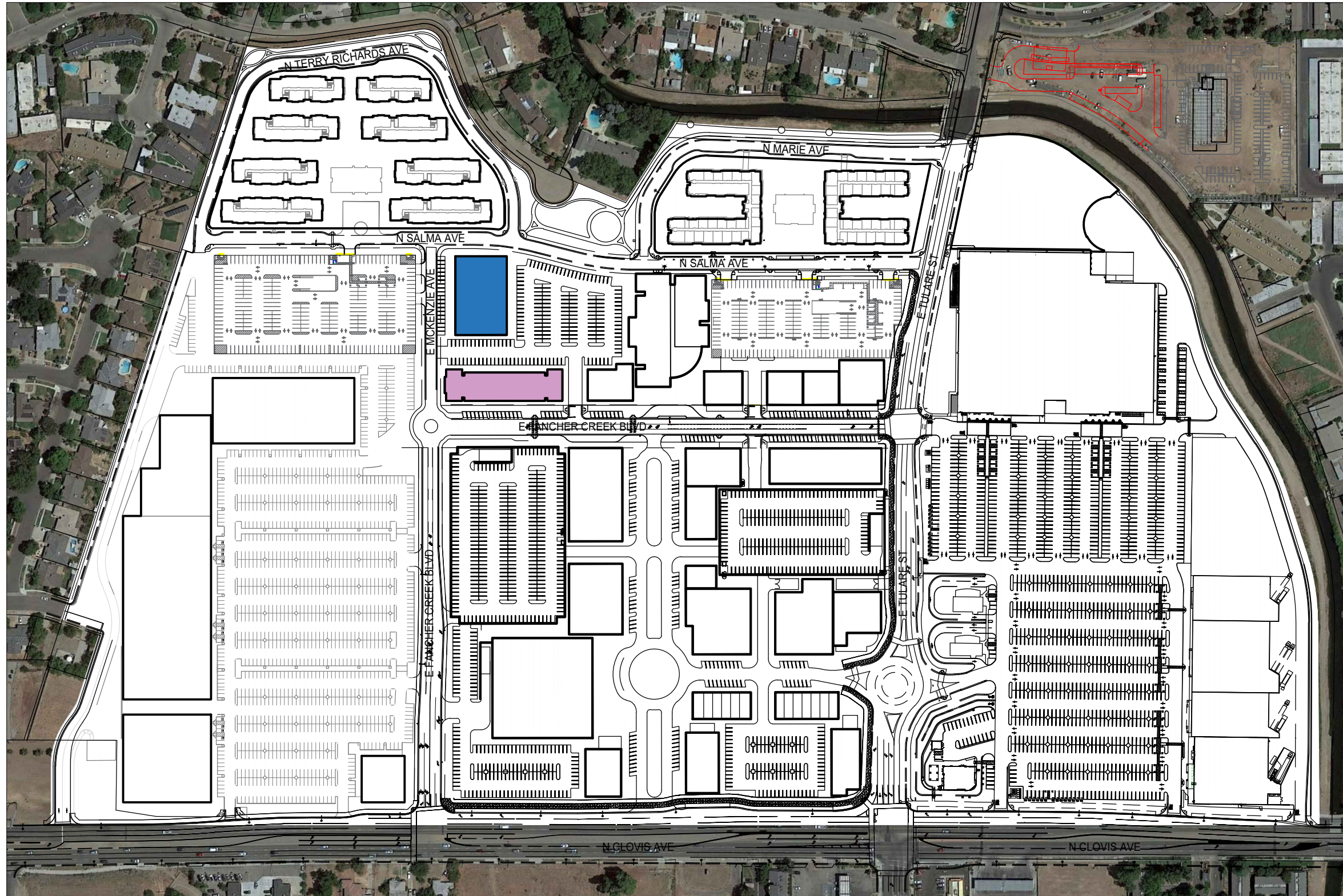
fancher creek  
town center



FRESNO, CA

07/10/23

FANCHER CREEK TOWN CENTER, LLC



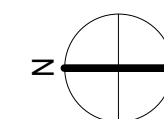
FOURTH FLOOR

LEGEND

- OFFICE
- MULTIFAMILY RESIDENTIAL HOUSING
- HOTEL

THE SHAPE AND LOCATIONS OF THE BUILDINGS CAN VARY. THE OVERALL BUILDING SIZE IS NOT TO EXCEED THE STATED SQUARE FOOTAGES.

fancher creek  
town center



FRESNO, CA

07/10/23

FANCHER CREEK TOWN CENTER, LLC