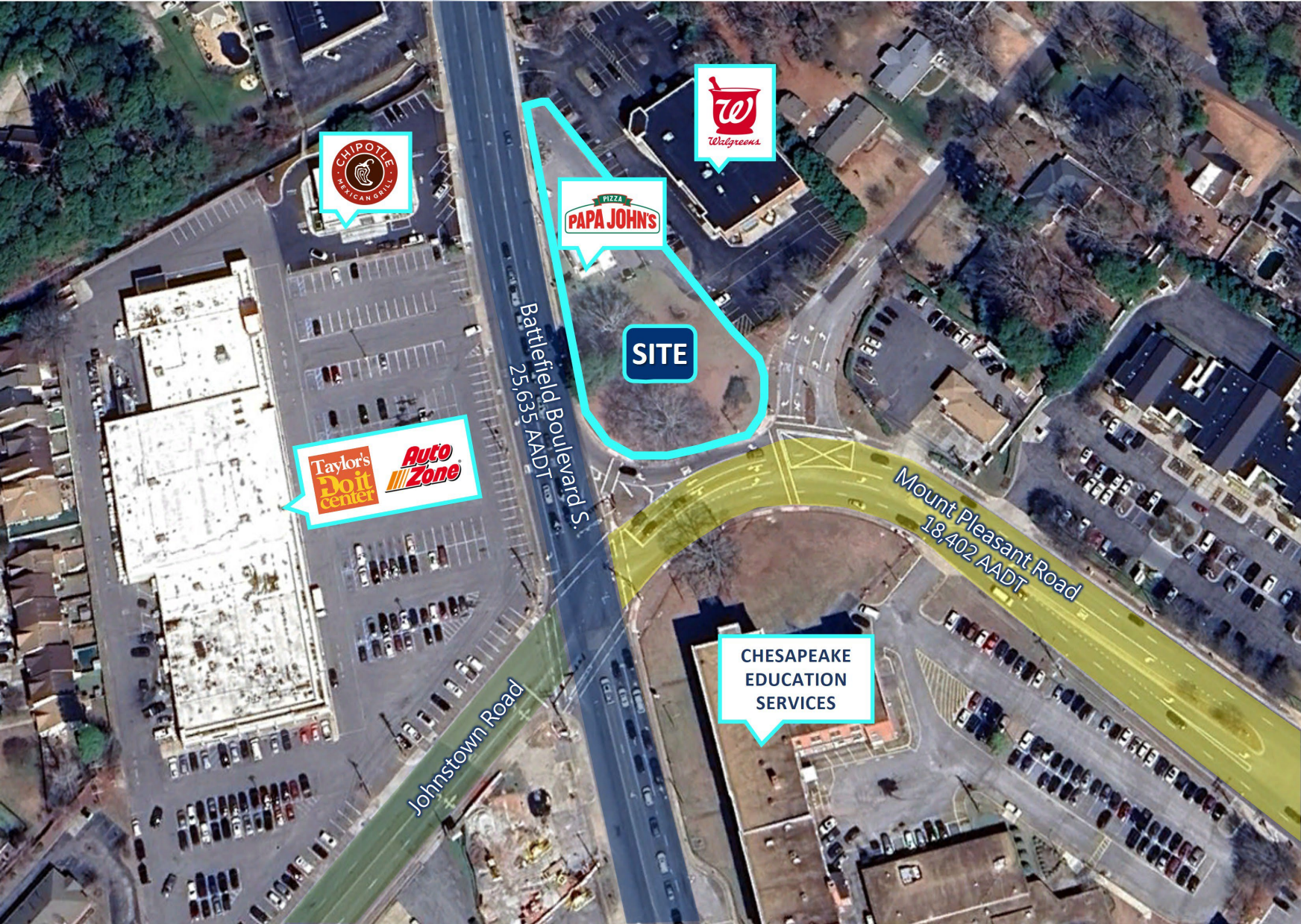


FOR
SALE

0.80 ACRE PARCEL WITH
PAPA JOHNS PIZZA



MICHAEL P. ZARPAS

President

757.286.1783 (c) | 757.633.0623 (o)

mzarpas@globalreinc.com

TED M. ZARPAS

Director of Brokerage

757.613.6833 (c) | 757.633.0623 (o)

tzarpas@globalreinc.com

359 S. Battlefield Boulevard | Chesapeake, VA 23322

GLOBAL
REAL ESTATE INVESTMENT

SUMMARY

Location 359 S. Battlefield Boulevard
Chesapeake, Virginia 23322

Sale Price Entire 0.80± acre parcel including Papa Johns
\$1,375,000
If entire parcel is purchased, Papa Johns will sign a new 10-year lease at \$3,500.00 per month with 10% rent increase at Year 6 and four 5-year options with 10% rent increases every 5 years

0.49± acre of 0.80-acre parcel (w/o Papa Johns)
\$800,000

Zoned B-1 (Neighborhood Business)
Table of Uses

POPULATION

1 MILE	3 MILE	5 MILE
6,301	45,171	87,399

AVERAGE HOUSEHOLD INCOME

1 MILE	3 MILE	5 MILE
\$149,852	\$145,468	\$133,529

NUMBER OF HOUSEHOLDS

1 MILE	3 MILE	5 MILE
2,134	15,143	31,348

HIGHLIGHTS

- Prime Great Bridge hard corner
- Located at lighted intersection of S. Battlefield Boulevard and Mount Pleasant Road
- Area retailers include Walgreens, Taylor’s Do-It Center, AutoZone, Chipotle, Kroger, Five Below, Dollar Tree, Panera Bread, and Pet Supplies Plus
- Traffic Count: 25,635 AADT on Battlefield Blvd S.
- Traffic Count: 18,402 AADT on Mt. Pleasant Road



SURROUNDING RETAIL



GLOBAL

REAL ESTATE INVESTMENT

MICHAEL P. ZARPAS

PRESIDENT

757.286.1783 | mzarpas@globalreinc.com

TED M. ZARPAS

DIRECTOR OF BROKERAGE

757.613.6833 | tzarpas@globalreinc.com

GLOBAL REAL ESTATE INVESTMENT, INC.

757.633.0623

www.globalreinc.com

1612 Virginia Beach Boulevard, Suite 202, Virginia Beach, VA 23454