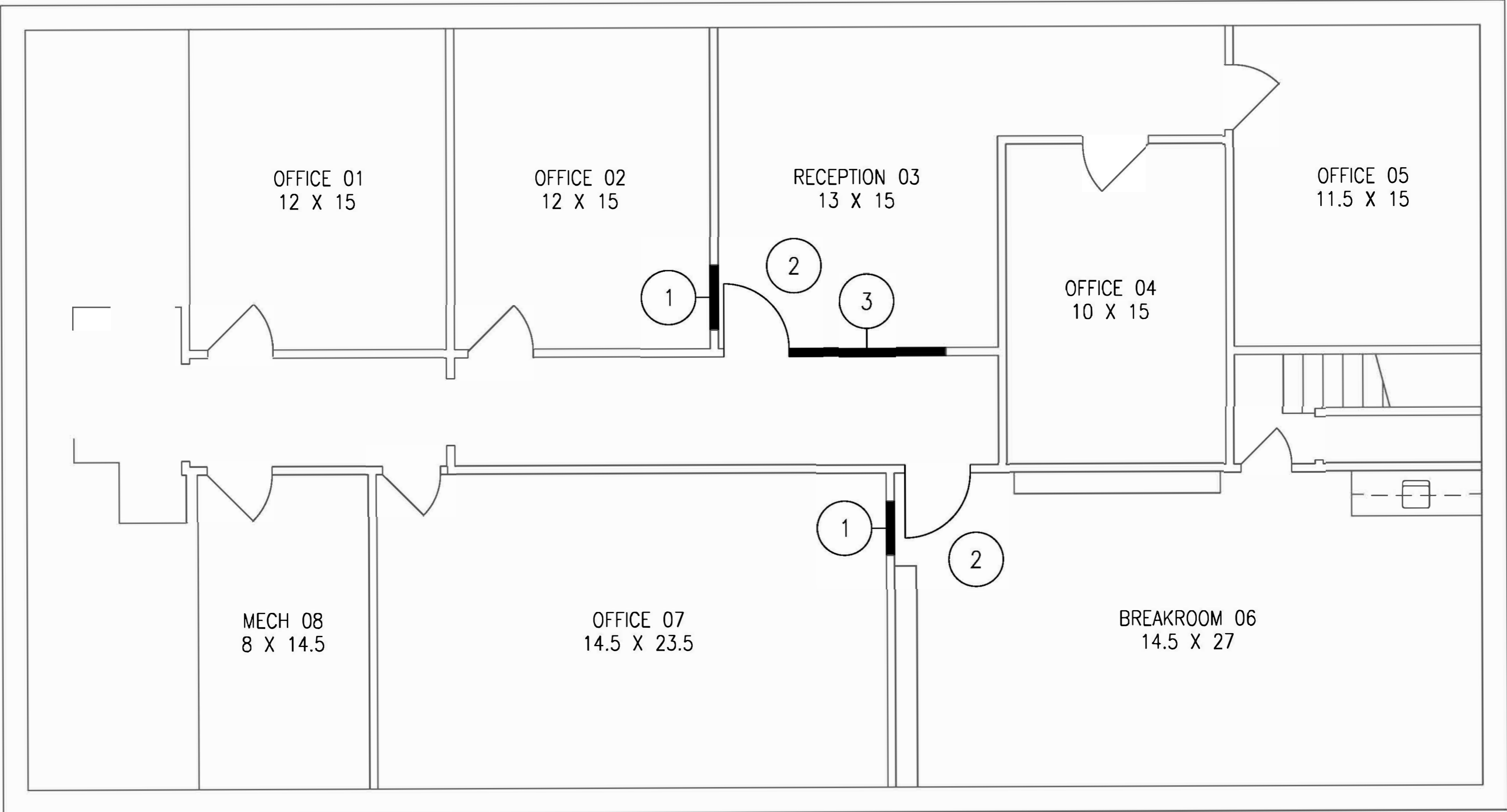


Lower Level





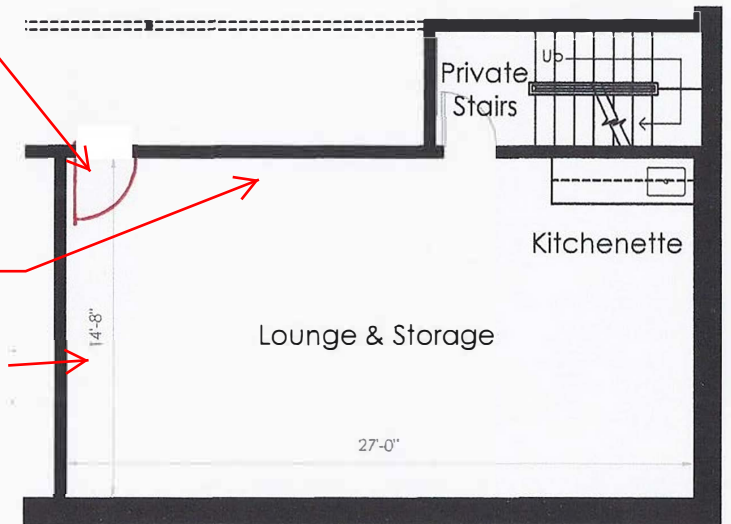
Main Level

$\frac{3}{8}" = 1'-0"$

Suite 200
 2,932 Square Feet
 4031 Chain Bridge Road
 Fairfax, VA 22030

New door leading to common area hallway for emergency egress

Should the existing bookshelves on these walls be removed totally? Some will have to be removed for the new door.



Lower Level

THIRD FLOOR

