



# AVAILABLE FOR LEASE

4126 TECHNOLOGY WAY  
±48,799 SF

in Carson City  
NEVADA'S STATE CAPITOL

4150 TECHNOLOGY WAY  
±48,799 SF

**CBRE**



# OVERVIEW

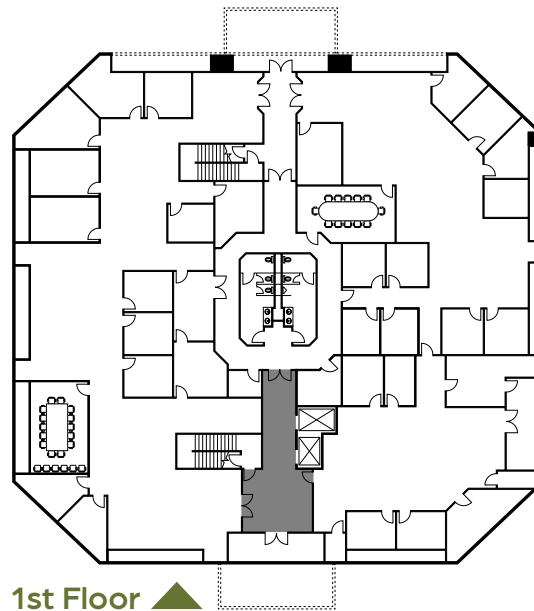
- 4126 Technology Way: 10,000 SF up to 48,799 SF Available
- 4150 Technology Way: 10,000 SF up to 48,799 SF Available
- Both Buildings Combined: 97,598 SF Available
- Additional Pads for Expansion Available
- Lease Rate Negotiable
- 500+ Parking Spaces
- Elevator Served
- Ideal for Corporate Headquarters
- Tenant Improvements Negotiable
- Views of the Carson City Airport, Eagle Valley Golf Course and the Surrounding Sierra NV Mountains

4126 TECHNOLOGY WAY

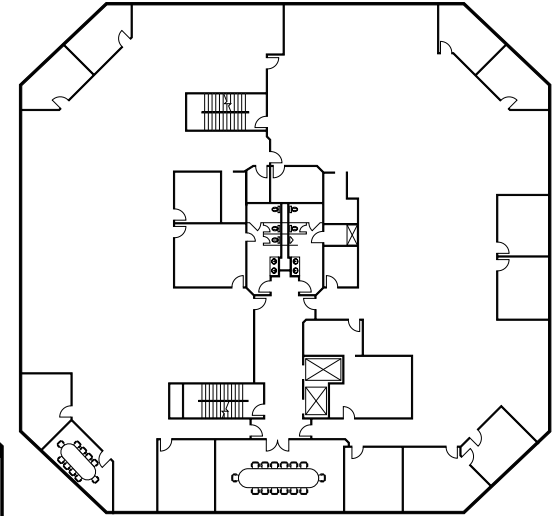
4150 TECHNOLOGY WAY



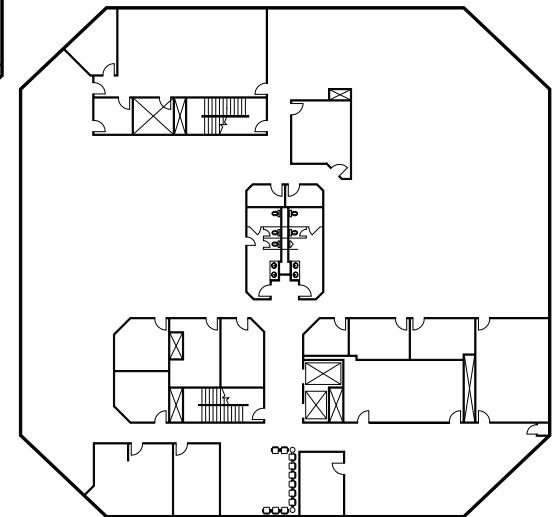
# 4126 TECHNOLOGY WAY | 10,000 SF UP TO 48,799 SF AVAILABLE



1st Floor ▲

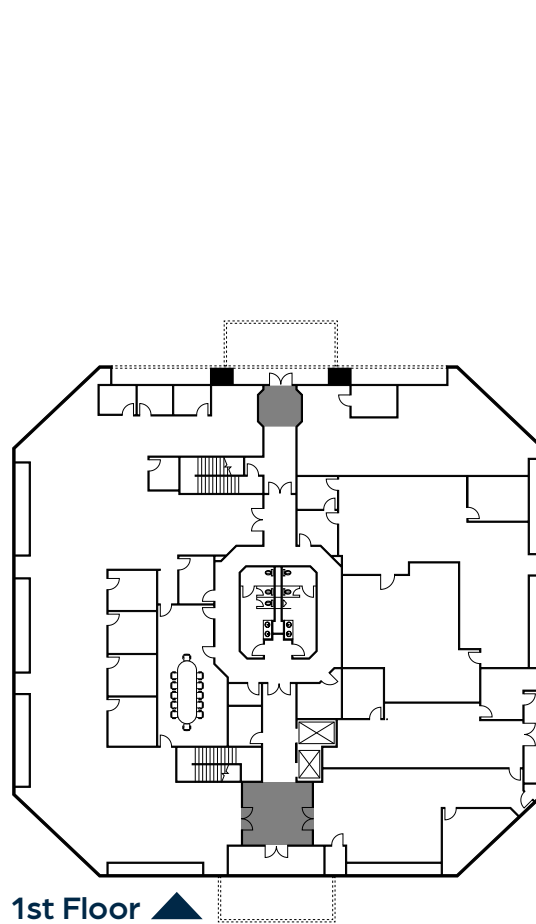


▲ 2nd Floor

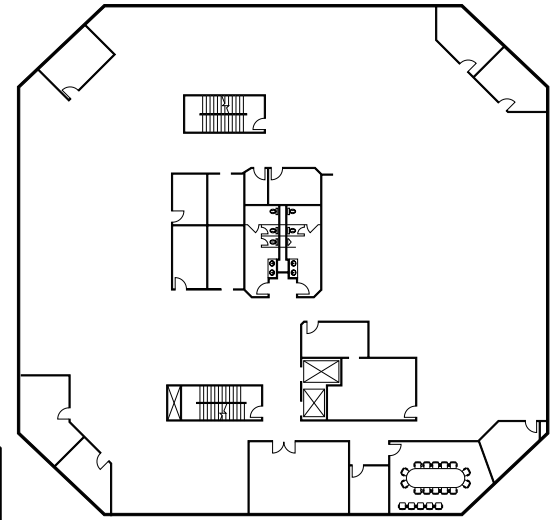


▲ 3rd Floor

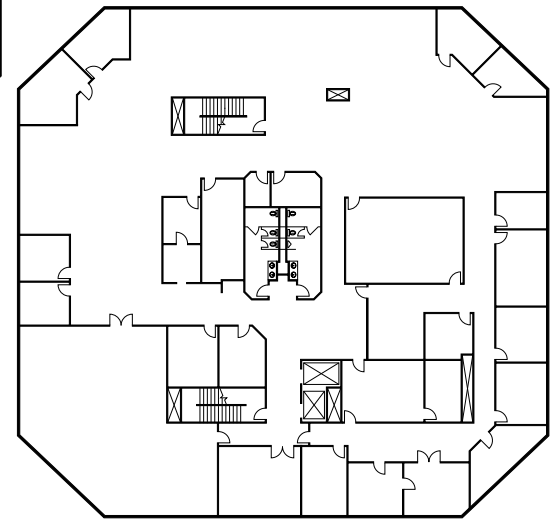
# 4150 TECHNOLOGY WAY | 10,000 SF UP TO 48,799 SF AVAILABLE



1st Floor ▲

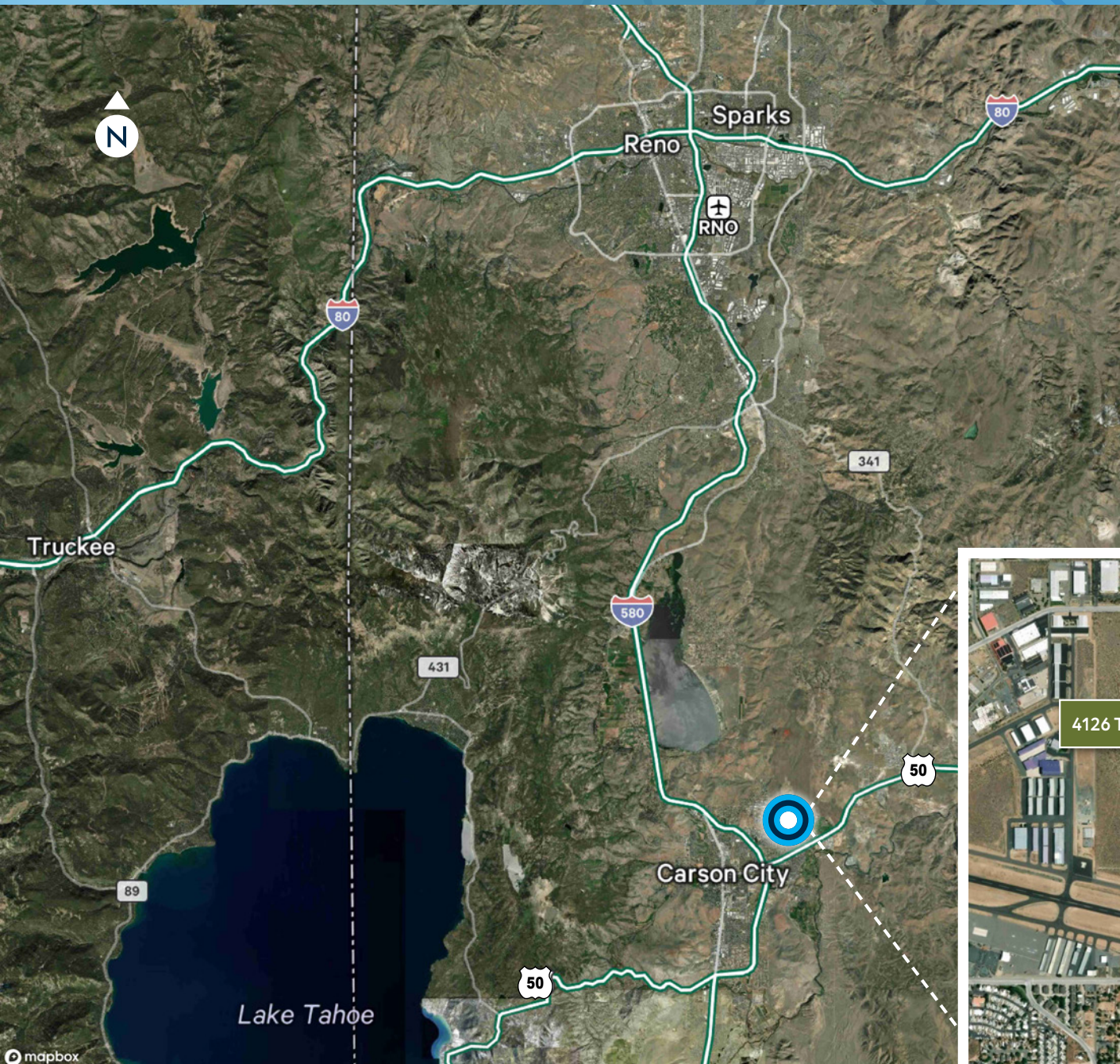


▲ 2nd Floor



▲ 3rd Floor

# REGIONAL OVERVIEW



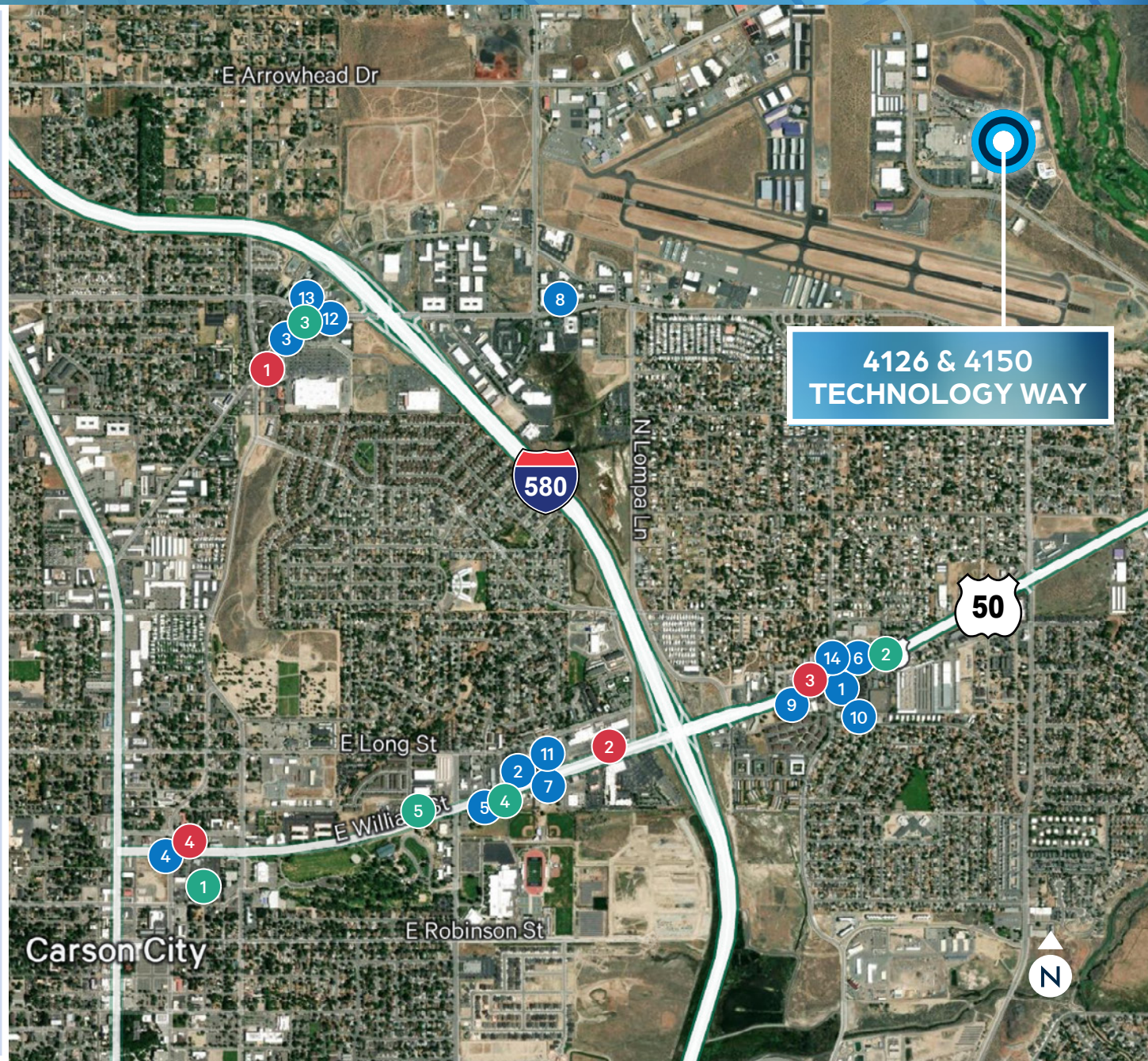
Greater Reno-Tahoe encompasses the cities of Reno, Sparks, Carson City, Minden/Gardnerville, and Incline Village. The region is centrally located to major western cities including Sacramento, San Francisco, Portland, Salt Lake City, Las Vegas and Los Angeles, all within a day's drive.

With its many recreational opportunities, a rich quality of life and no state taxes for businesses, the area is strongly poised for continued growth.



# NEARBY AMENITIES

- 1 Taco Bell
- 2 Little Caesars
- 3 Jack in the Box
- 4 Jack in the Box
- 5 Port of Subs
- 6 Dairy Queen
- 7 El Pollo Loco
- 8 Sonic
- 9 Arby's
- 10 Domino's Pizza
- 11 Papa Murphy's
- 12 Round Table Pizza
- 13 Del Taco
- 14 Pizza Factory
- 1 Starbucks US
- 2 The Human Bean
- 3 Starbucks US
- 4 Dutch Bros Coffee
- 5 Starbucks US
- 1 Dickey's Barbecue Pit
- 2 Capriotti's Sandwich Shop
- 3 Firehouse Subs
- 4 Big Chicken



# AVAILABLE FOR LEASE

CARSON CITY, NV

**4126 TECHNOLOGY WAY**  
**±48,799 SF**

**4150 TECHNOLOGY WAY**  
**±48,799 SF**

**FOR MORE INFORMATION, PLEASE CONTACT:**

**[WWW.CBRE.COM/RENO](http://WWW.CBRE.COM/RENO)**

**Matt Grimes, CCIM**  
Senior Vice President  
+1 775 356 6290  
Lic. S.0072644  
[matt.grimes@cbre.com](mailto:matt.grimes@cbre.com)

**David Woods, CCIM**  
Senior Vice President  
+1 775 321 4459  
Lic. S.0072655  
[david.woods@cbre.com](mailto:david.woods@cbre.com)

**Leahna Chapman**  
Senior Associate  
+1 775 823 6937  
Lic. S.0183267  
[leahna.chapman@cbre.com](mailto:leahna.chapman@cbre.com)

**CBRE**

© 2026 CBRE, Inc. All rights reserved. This information has been obtained from sources believed reliable, but has not been verified for accuracy or completeness. You should conduct a careful, independent investigation of the property and verify all information. Any reliance on this information is solely at your own risk. CBRE and the CBRE logo are service marks of CBRE, Inc. All other marks displayed on this document are the property of their respective owners, and the use of such logos does not imply any affiliation with or endorsement of CBRE. Photos herein are the property of their respective owners. Use of these images without the express written consent of the owner is prohibited. PMStudio\_May2026