

FOR LEASE



260 E 15th AVENUE - EUGENE, OREGON 97401

PROFESSIONAL OFFICE SPACE

- **Central Eugene Location** between downtown, campus, and South Eugene
- **Quiet Garden-Style Setting** in a professional office complex
- **Ample On-Site Parking** and building signage available
- **Suite A:** Reception area, 3 private offices, conference room with coffee bar, and private restroom

Lease Rate: \$1,407 per month, gross

SUZANNE KINTZLEY
suzannek@campbellre.com
(541) 915-6009

Licensed in the State of Oregon

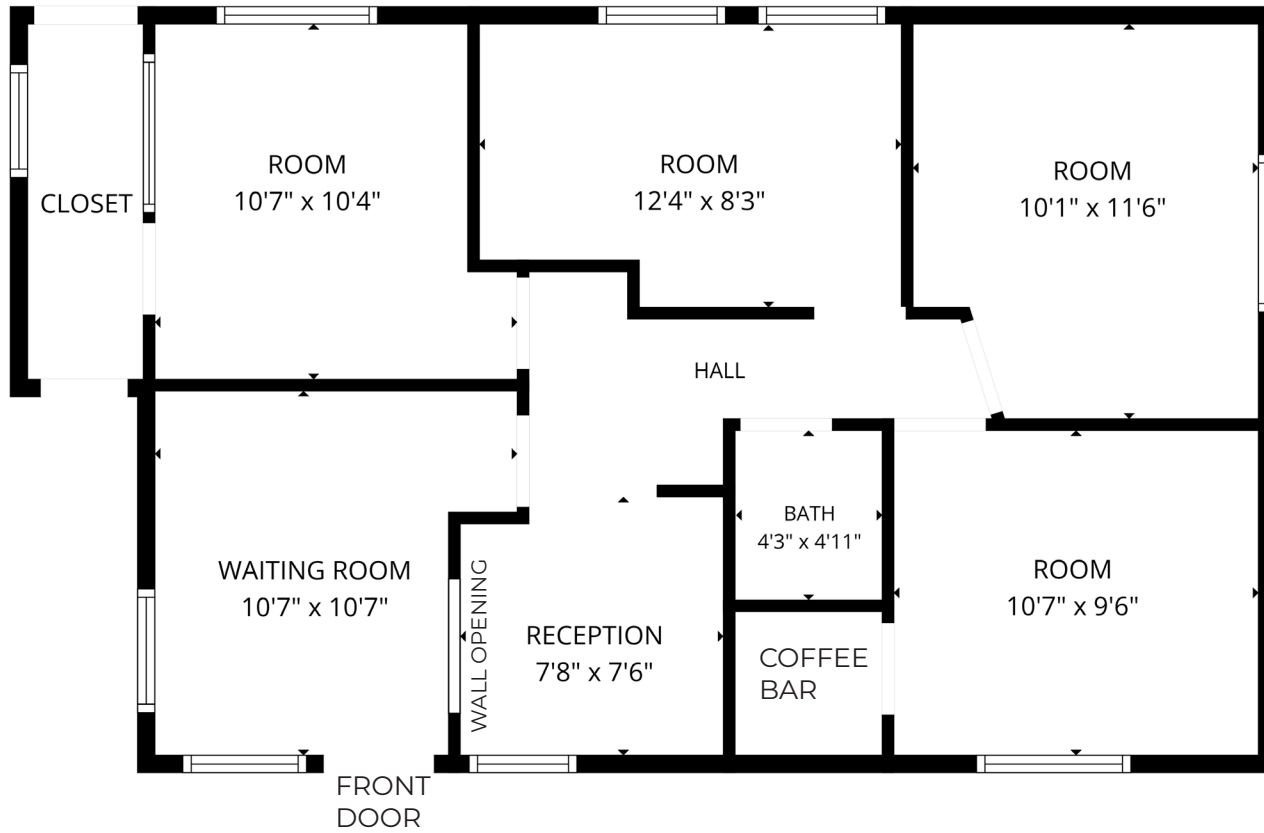


www.campbellre.com

ABBY HYLAND-SCOTT
abby@campbellre.com
(541) 556-4813

Licensed in the State of Oregon

1ST FLOOR SUITE A

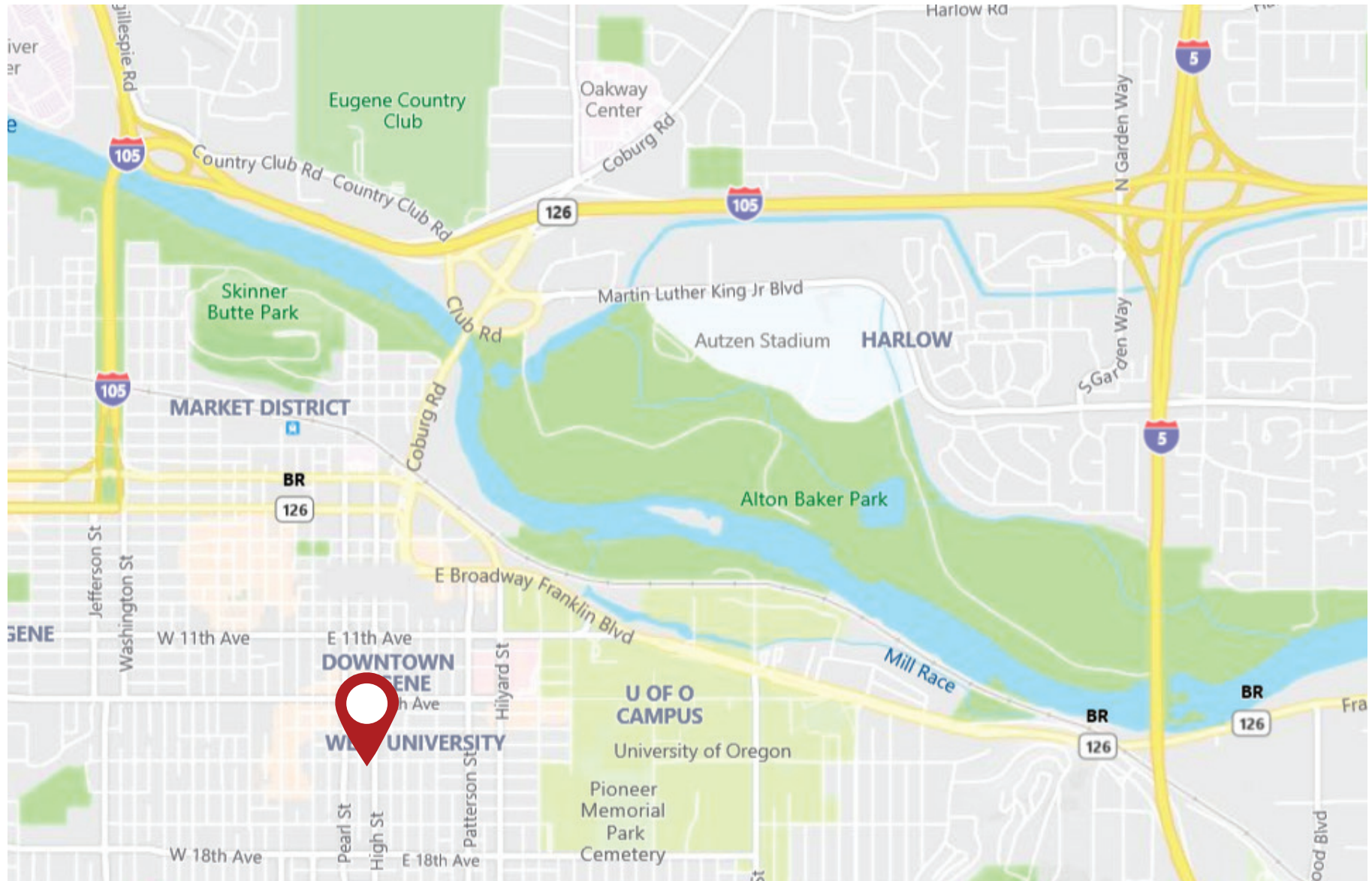


FLOOR PLAN CREATED BY CUBICASA APP. MEASUREMENTS DEEMED HIGHLY RELIABLE BUT NOT GUARANTEED.



The information in this package was obtained from sources deemed reliable, and is not guaranteed by agent. Package is subject to change, error or omission, prior sale or lease, correction or withdrawal. Any party contemplating purchase is urged to conduct their own independent study and inspection.

PROPERTY LOCATION



The information in this package was obtained from sources deemed reliable, and is not guaranteed by agent. Package is subject to change, error or omission, prior sale or lease, correction or withdrawal. Any party contemplating purchase is urged to conduct their own independent study and inspection.