

Industrial Building for Sale

1100 W MISSISSIPPI AVENUE, DENVER, CO 80223

NEW PRICING! EXCEPTIONAL VALUE!



[Warehouse Virtual Tour](#)

[Office Virtual Tour](#)



Overview

Hoff & Leigh proudly bring you this highly sought after stand-alone Industrial property for sale, located at 1100 W Mississippi Avenue. It boasts 15,665 SF of office/warehouse space and is situated on a large I-1 zoned Industrial lot, featuring fenced and secure storage, and ample parking.

The building features multiple overhead doors (3) ranging from 10' - 12' in height, warehouse clear height ranging from 16' - 17.5' along with other common areas throughout the building. It currently has an extremely useable 75/25%, warehouse to office ratio.

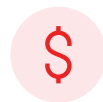
The versatile spaces in the building can be used for various industrial and retail businesses. This property is ideal with its prime location, flexible zoning, and attractive features. Contact us today to schedule your private showing.

*Billboard generates \$2,800 annually.

Highlights

- Fenced Yard Space
- Ample Parking and Outside Storage
- High Visibility Signage
- Frontage along W. Mississippi Avenue
- Flexible I-1 Zoning
- Multiple Overhead Doors
- Billboard Income in Place

Property Details



Sales Price
\$2,584,725
\$1,995,000



Lot Size
0.82 Acres



Building Size
15,665 SF



Zoning
I-1

Rev: April 15, 2026



Industrial Building for Sale

1100 W MISSISSIPPI AVENUE, DENVER, CO 80223



Rev: April 15, 2026



Our Network Is Your Edge

All information is from sources deemed reliable and is subject to errors, omissions, change of price, rental, prior sale, and withdrawal without notice. Prospect should carefully verify each item of information contained herein.

Brandon Langiewicz, SIOR

C: 715.512.0265

O: 720.572.5187

Brandon@HoffLeigh.com

Chris Camozzi

C: 303.328.5611

O: 720.572.5187

CCamozzi@HoffLeigh.com

Industrial Building for Sale

1100 W MISSISSIPPI AVENUE, DENVER, CO 80223



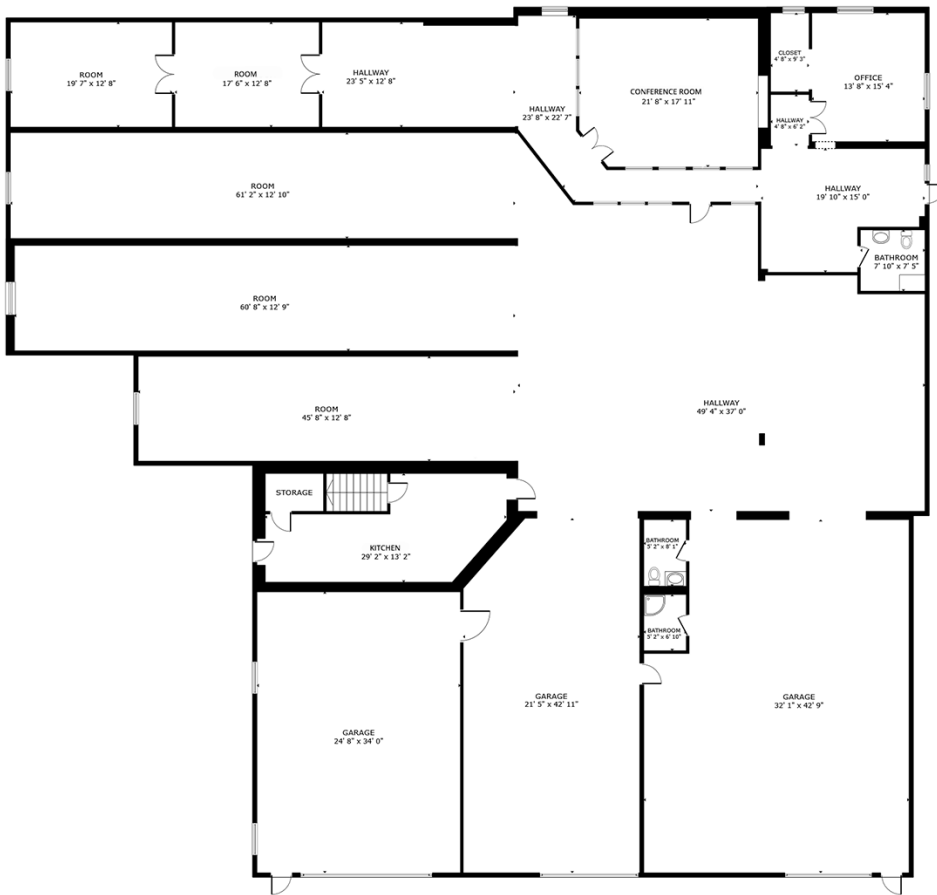
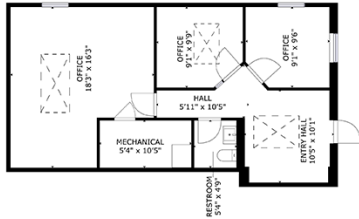
Rev: April 15, 2026

Industrial Building for Sale

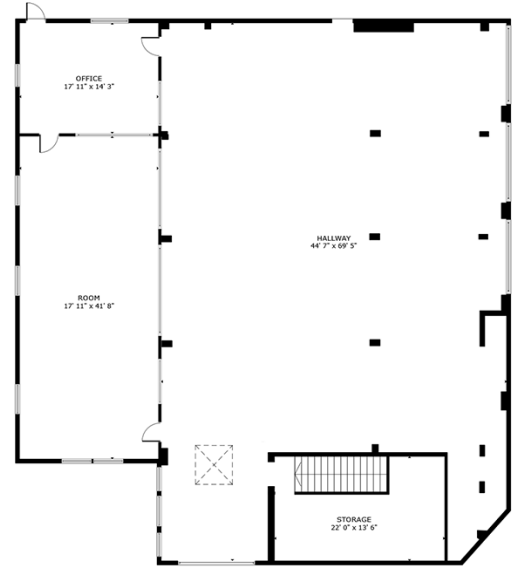
1100 W MISSISSIPPI AVENUE, DENVER, CO 80223



Rev: April 15, 2026



FLOOR 1



FLOOR 2

Rev: April 15, 2026

Industrial Building for Sale

1100 W MISSISSIPPI AVENUE, DENVER, CO 80223

1100 W Mississippi Ave, Denver, Colorado, 80223

DEMOGRAPHICS



195,495
Population



34.6
Median Age



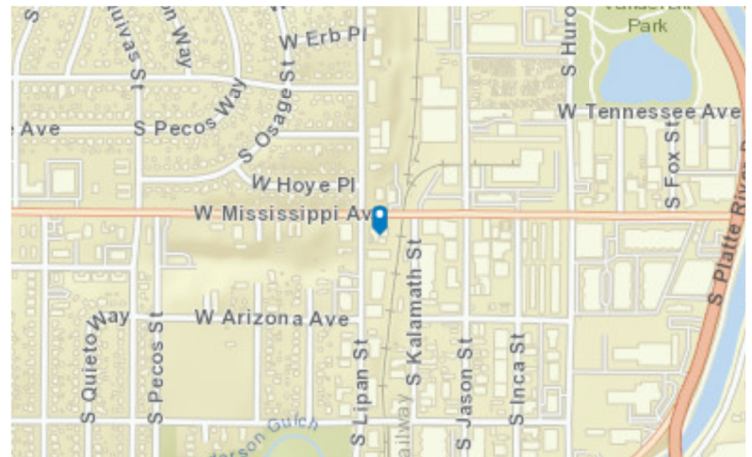
2.2
Average
Household Size



\$77,587
Median Household
Income

TRAFFIC COUNT

Cross street	VPD	Distance
W Hoyer Pl	4,700	0.0
W Louisiana Ave	2,600	0.3
S Fox St	20,494	0.4
S Huron St	720	0.4
S Huron St	370	0.5



Rev: April 15, 2026



Our Network Is Your Edge

All information is from sources deemed reliable and is subject to errors, omissions, change of price, rental, prior sale, and withdrawal without notice. Prospect should carefully verify each item of information contained herein.

Brandon Langiewicz, SIOR

C: 715.512.0265

O: 720.572.5187

Brandon@HoffLeigh.com

Chris Camozzi

C: 303.328.5611

O: 720.572.5187

CCamozzi@HoffLeigh.com



Industrial Building for Sale

1100 W MISSISSIPPI AVENUE, DENVER, CO 80223



Rev: April 15, 2026



Our Network Is Your Edge

All information is from sources deemed reliable and is subject to errors, omissions, change of price, rental, prior sale, and withdrawal without notice. Prospect should carefully verify each item of information contained herein.

Brandon Langiewicz, SIOR

C: 715.512.0265

O: 720.572.5187

Brandon@HoffLeigh.com

Chris Camozzi

C: 303.328.5611

O: 720.572.5187

CCamozzi@HoffLeigh.com