

# NAPLES DISTRIBUTION CENTER

25,420 SF For Lease



1485 RAIL HEAD BOULEVARD, NAPLES, FLORIDA 34110





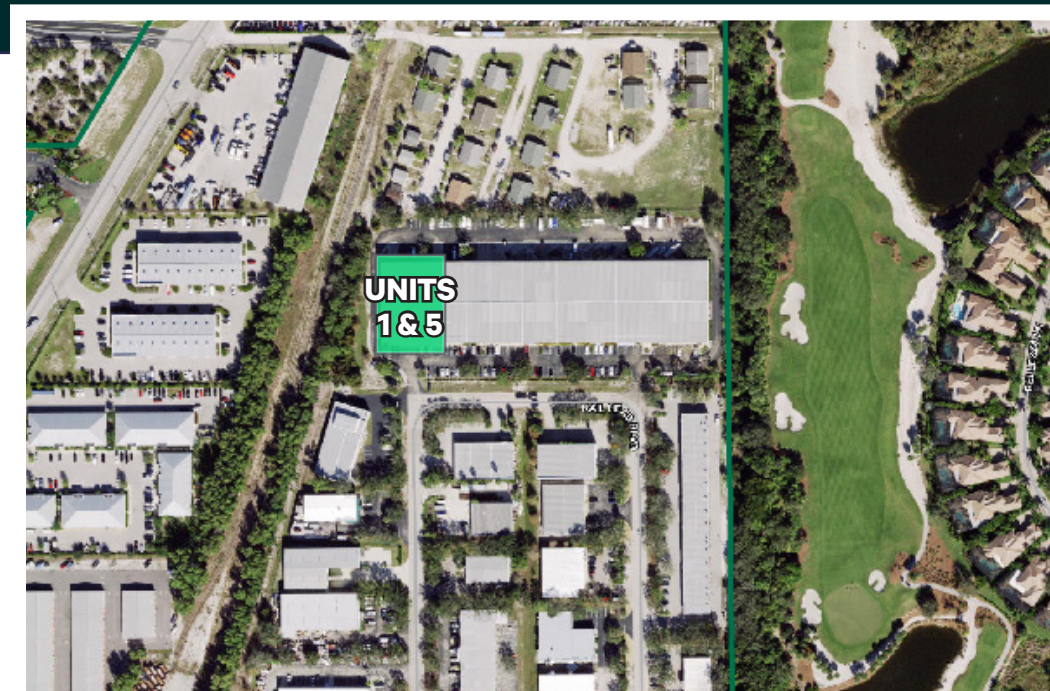
# PROPERTY OVERVIEW

**1485 Rail Head Boulevard** is a multi-tenant distribution center in Naples, Florida. The available units feature endcap space, previously occupied by FedEx. The large bay distribution space totals 25,420 square feet with a 34' ceiling height, 1600 AMP service, and five (5) 18' x 14' roll up electric doors. The 3,280-square-foot office was renovated in 2023. Both units are fully sprinklered.



1485 Rail Head Blvd., Naples, FL 34110

Asking Rate	\$17.00 PSF NNN
Building Size (SF)	96,875
Available Units	#1 & 5
Available Space (SF)	25,420
Office Space (SF)	3,280 (Renovated in 2023)
OH Doors	Five (5) 18'x14'
Ceiling Height	34'
Year Built	1997
Zoning	<a href="#">I-Industrial</a>
Parcel ID	00143320003



# PHOTOS

CBRE

1485 RAIL HEAD BLVD., NAPLES, FL 34110



# PHOTOS

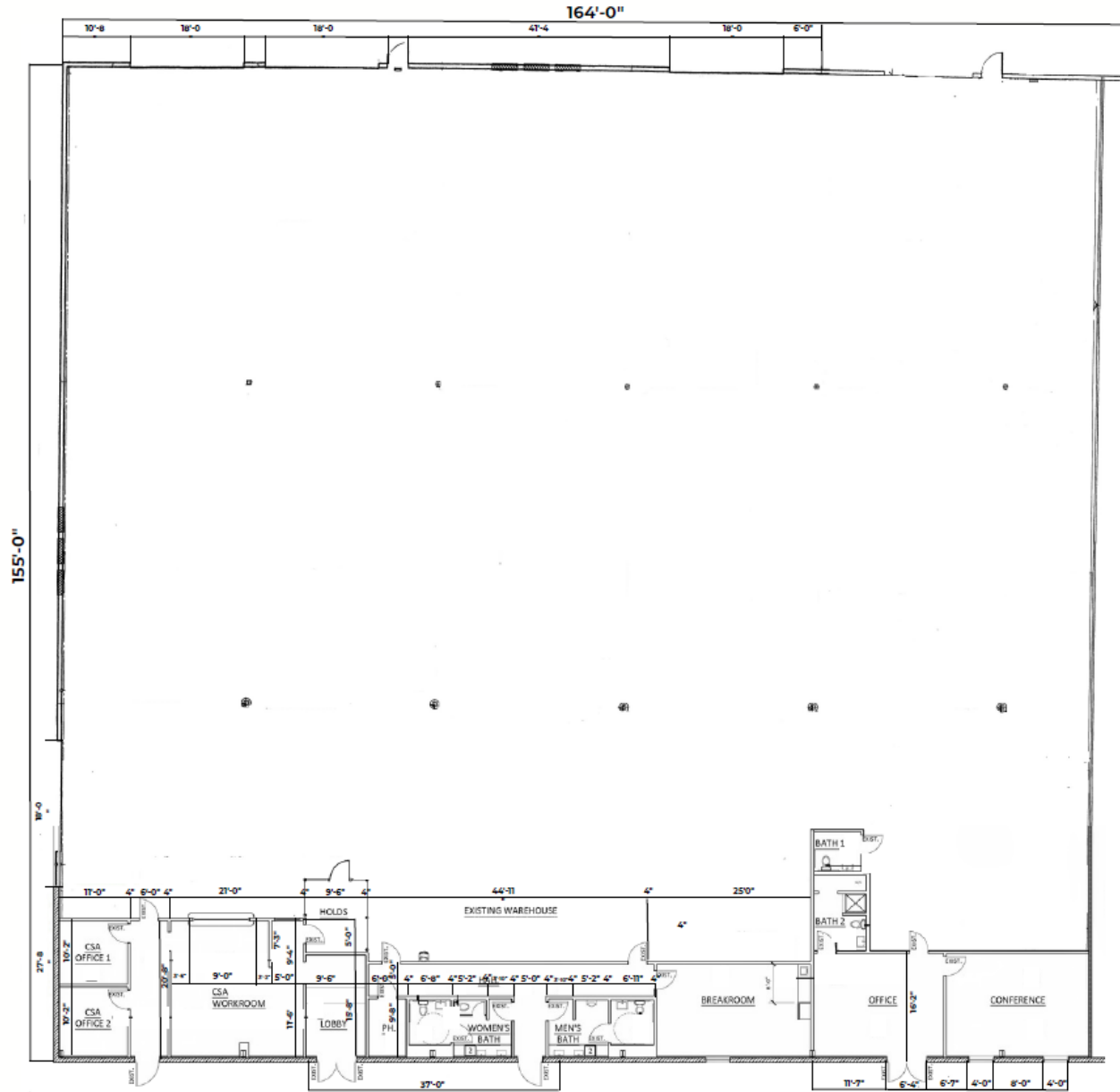
CBRE

1485 RAIL HEAD BLVD., NAPLES, FL 34110



# FLOOR PLAN

1485 RAIL HEAD BLVD., NAPLES, FL 34110







## CONTACT US

# CBRE

**Derek Bornhorst, SIOR, CCIM**

Senior Vice President

+1 239 898 7987

[derek.bornhorst@cbre.com](mailto:derek.bornhorst@cbre.com)

**Adam Bornhorst, SIOR**

Vice President

+1 239 789 6537

[adam.bornhorst@cbre.com](mailto:adam.bornhorst@cbre.com)