



14555 Global Pkwy

Fort Myers, FL 33913

Property Features

- Fully cleared, development ready, improved land with offsite water management infrastructure in place.
- The area is rapidly transforming into a major industrial hub, with recent expansions from Amazon, FedEx, and major distribution centers.
- Immediate access to I-75 providing direct routes to Tampa, Miami, and Orlando.
- Located within close proximity Southwest Florida International Airport (RSW), ideal for air cargo and executive travel access.
- Proximity to Florida Gulf Coast University (FGCU) and local technical colleges ensures a strong labor pool for industrial and logistics jobs.

STRAP Numbers 26-45-25-L4-27000.0030

Property Type Improved Industrial Land

Land Area ± 87,207 SF / 2.00 AC

Zoning Airport Commerce
IPD – SWFL International
Commerce Park

Future land use Tradeport

Frontage ± 218' on Global Pkwy
± 404' on Jetport Loop
± 221' on Treeline Ave S

Submarket S Fort Myers / San Carlos

For more information:

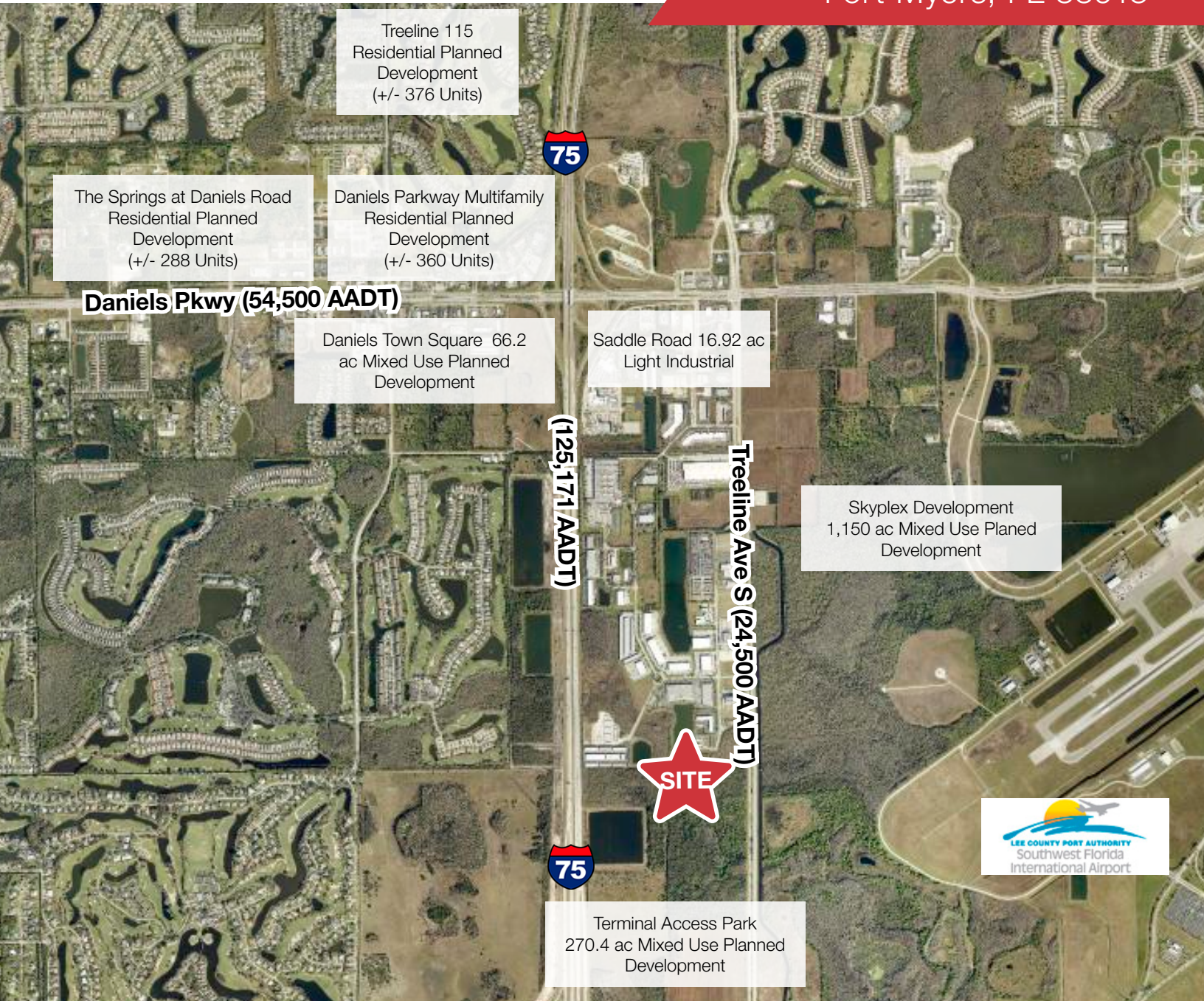
Gary Tasman

Executive Vice President
+1 239 489 3600
gtasman@naiburnsscalo.com

Shawn Stoneburner

Senior Vice President
+1 239 489 3600
sstoneburner@naiburnsscalo.com

5220 Summerlin Commons Blvd Suite 500
Fort Myers, FL 33907
+1 239 489 3600
naiburnsscalo.com



2025 Demographics	1-Mile	3-Miles	5-Miles
Total Population	328	17,627	82,172
Total Households	160	8,183	35,256
Annual Population Growth 2025-2030	2.3%	3.5%	2.8%

For more information:

Gary Tasman
Executive Vice President
+1 239 489 3600
gtasman@naiburnsscalo.com

Shawn Stoneburner
Senior Vice President
+1 239 489 3600
sstoneburner@naiburnsscalo.com

5220 Summerlin Commons Blvd Suite 500
Fort Myers, FL 33907
+1 239 489 3600
naiburnsscalo.com



IPD Zoning:

Land Is Cleared And Ready To Develop. Ipd – Swfl International Commerce Park Zoning Offering A Multitude Of Uses At The Site.



Growing Infrastructure:

Fort Myers, Florida, is experiencing rapid infrastructure growth, driven by expanding commercial developments, residential projects, and enhanced transportation networks to support the area's thriving economy.



Major Transportation Routes:

Property offers quick access to I-75, a major interstate that connects Florida with several Southeastern U.S. states, making it ideal for efficient distribution across the region.



For more information:

Gary Tasman

Executive Vice President
+1 239 489 3600
gtasman@naiburnsscalo.com

Shawn Stoneburner

Senior Vice President
+1 239 489 3600
sstoneburner@naiburnsscalo.com

5220 Summerlin Commons Blvd Suite 500
Fort Myers, FL 33907
+1 239 489 3600
naiburnsscalo.com