

# FOR LEASE

1481 ROBERT S. LIGHT BLVD, BLDG D, BUDA, TX



## 15,300 SF Free-Standing Warehouse

### ABOUT THE PROPERTY:

1481 Robert S Light Blvd, Bldg D, is a 15,300 SF free-standing industrial warehouse situated in the Hays County Submarket of Buda, TX. This property is located in an established business park and features two grade-level doors, 20' clear height, 1,295 SF of office, fenced and gated outside storage, and quick access to Loop 4 and IH-35.

### FEATURES:

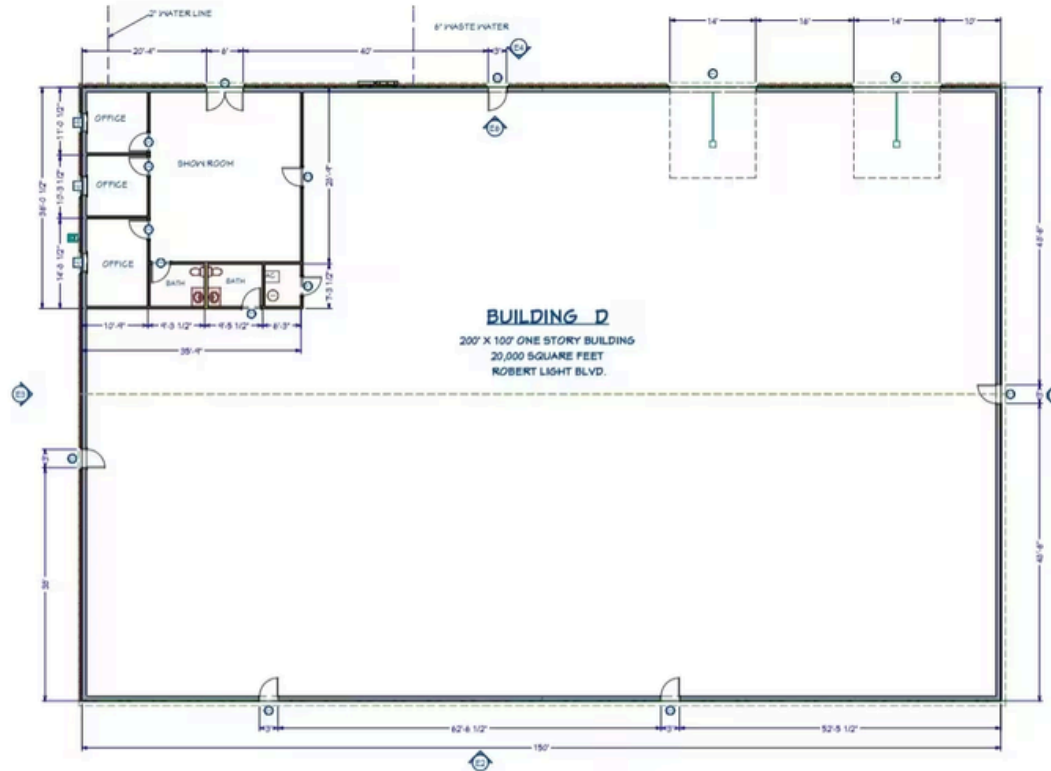
- 15,300 SF free-standing warehouse (incl. 1,295 SF office)
- 1.25-acre site
- 20' clear height
- Two (2) grade-level doors
- Fenced and gated outside storage yard
- Located in an established business park
- Direct access to S Loop 4 and quick access to IH-35

# PROPERTY HIGHLIGHTS

---



# FLOOR PLAN



NO.	SYMBOL	DESCRIPTION
1	(Symbol)	WATERLINE
2	(Symbol)	WASTE WATER

**WINDOW SCHEDULE**

NO.	SYMBOL	DESCRIPTION
1	(Symbol)	DOOR
2	(Symbol)	DOOR

**CABINET SCHEDULE**

NO.	SYMBOL	DESCRIPTION
1	(Symbol)	DOOR
2	(Symbol)	DOOR
3	(Symbol)	DOOR
4	(Symbol)	DOOR
5	(Symbol)	DOOR
6	(Symbol)	DOOR
7	(Symbol)	DOOR
8	(Symbol)	DOOR
9	(Symbol)	DOOR
10	(Symbol)	DOOR

**DOOR SCHEDULE**

## BUILDING-D FLOOR PLAN

1/8" = 1'-0"



CREATED BY:  
GREG GANNAWAY  
ggannawaydesign.com  
512-644-4305  
1427greg@gmail.com

NO.	SYMBOL	DESCRIPTION
1	(Symbol)	DOOR
2	(Symbol)	DOOR
3	(Symbol)	DOOR
4	(Symbol)	DOOR
5	(Symbol)	DOOR
6	(Symbol)	DOOR
7	(Symbol)	DOOR
8	(Symbol)	DOOR
9	(Symbol)	DOOR
10	(Symbol)	DOOR

**WHITEROCK WAREHOUSES**  
OWNER: BERRY GANNAWAY - EMMS-LLC  
ROBERT LIGHT BLVD  
BUDA, TEXAS 78610

DATE: 3/25/2018  
SCALE:  
SHEET: A-15

# AREA OVERVIEW

---



Sun Tile Corporation



Austex Sprinklers

Racefit Buda

Rone Engineering

Frito Lay Buda PEC

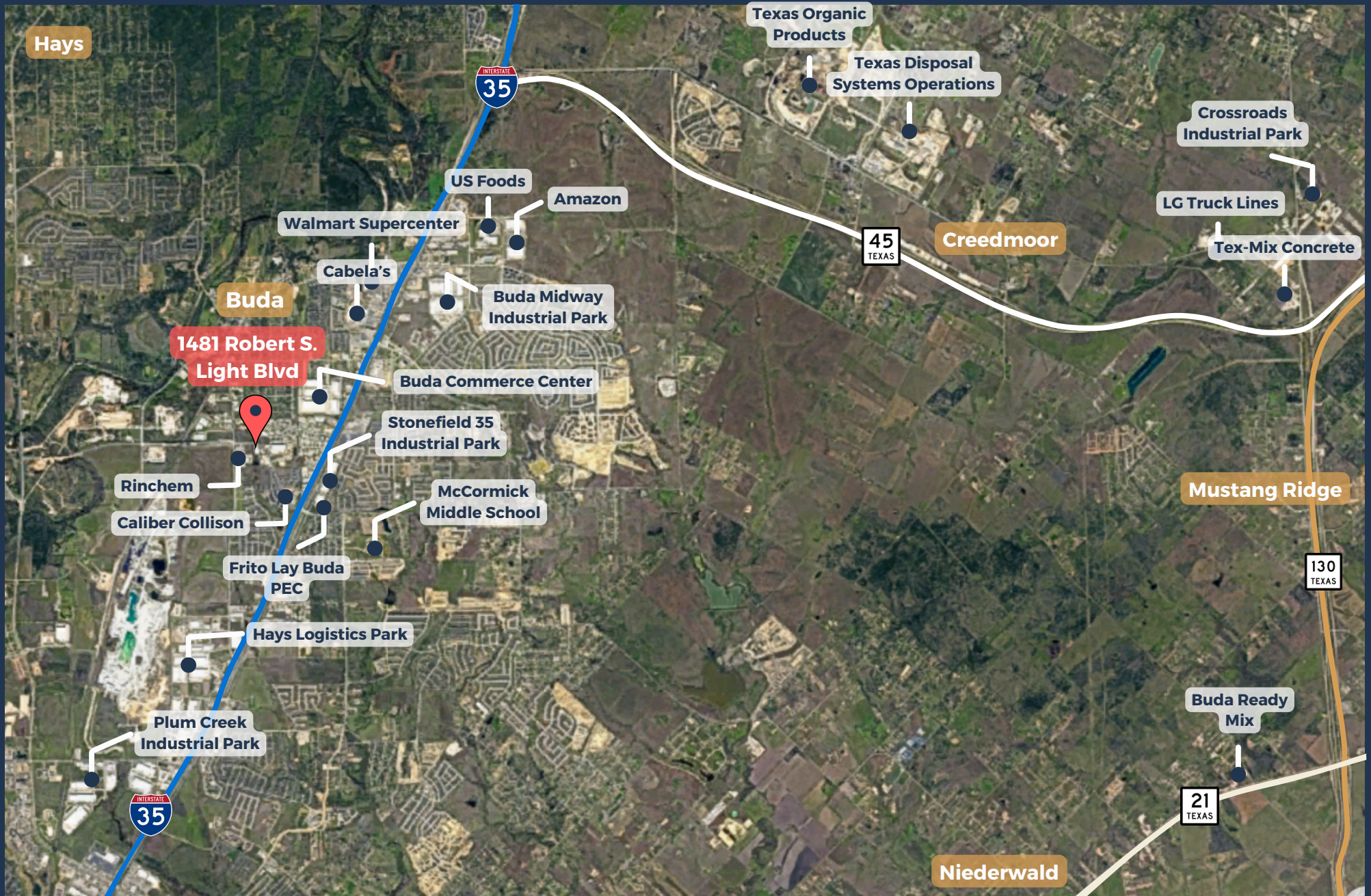
QuikTrip



Texas Fleet Supply

Indie Energy

# AREA OVERVIEW





# CONTACT OUR TEAM



**Cullen Mills**  
Co-Founder & President  
cmills@llanorealty.com  
(210) 926-5812



**Colin McLellan**  
Partner  
cmclellan@llanorealty.com  
(210) 908-6345



**Carson Byrd**  
Associate  
cbyrd@llanorealty.com  
(210) 941-0289