

# 11919

FOUNDATION PLACE

GOLD RIVER, CA 95670

**Sublease  
Thru December  
2027**



**Up to 63,206 SF  
Available**

**Michael D. Stassi, CCIM**  
Senior Vice President  
RE License # 01198564  
+1 916 440 1824  
michael.stassi@am.jll.com

**Daniel J. Baker**  
Vice President  
RE License # 01705912  
+1 916 440 1839  
daniel.baker@am.jll.com

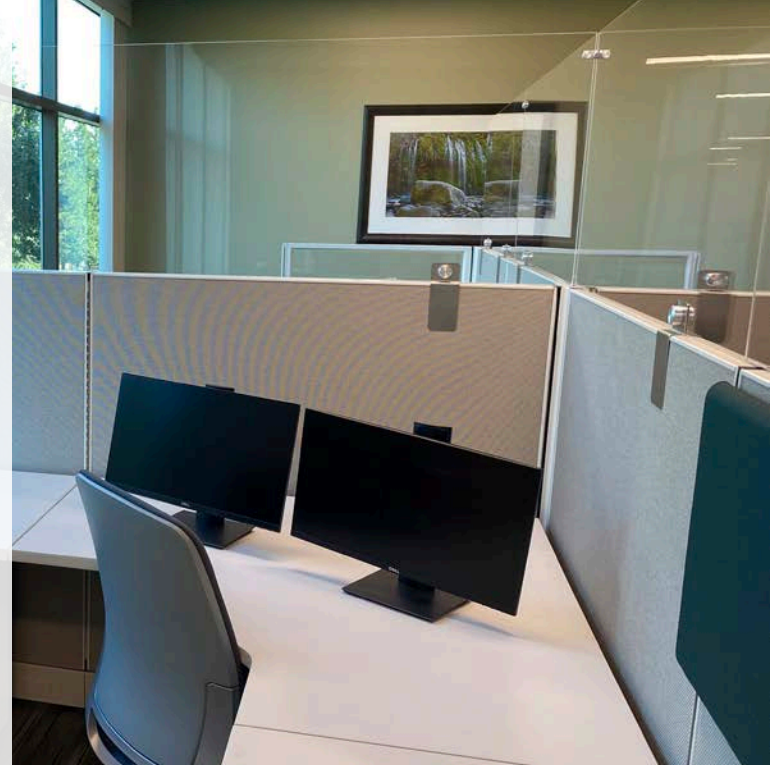




# 11919

## FOUNDATION PLACE

GOLD RIVER, CA 95670

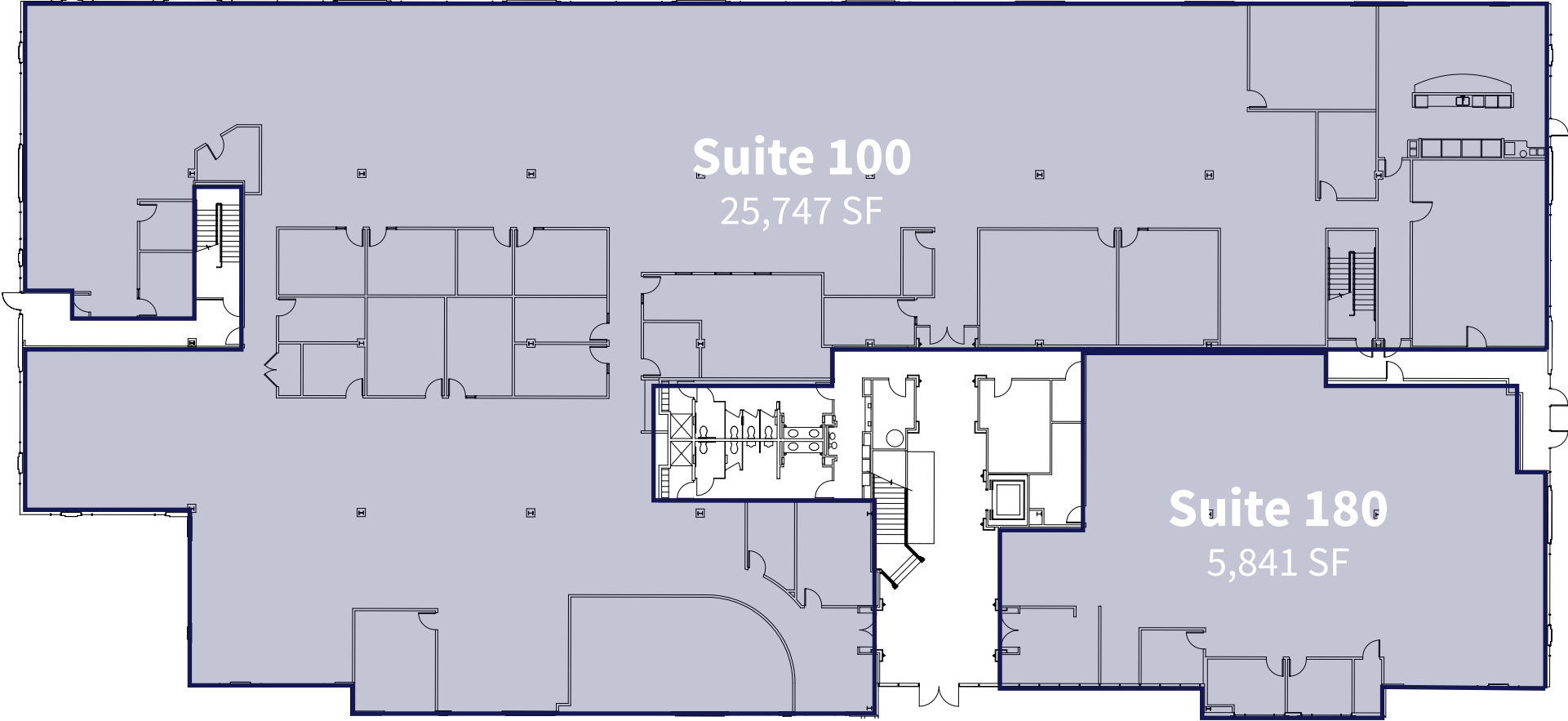


## Property Highlights

- › Substantial Savings Opportunity: Lease Expiration of December 2027
- › Ability to Demise to Approximately 5,000 SF
- › Building Freeway Signage Opportunity
- › Move In Ready / Plug & Play
- › Abundant Parking
- › Redundant Fiber Optics
- › Shuttle Service to Light Rail
- › Immediate Access to American River Parkway
- › Onsite Showers & Lockers

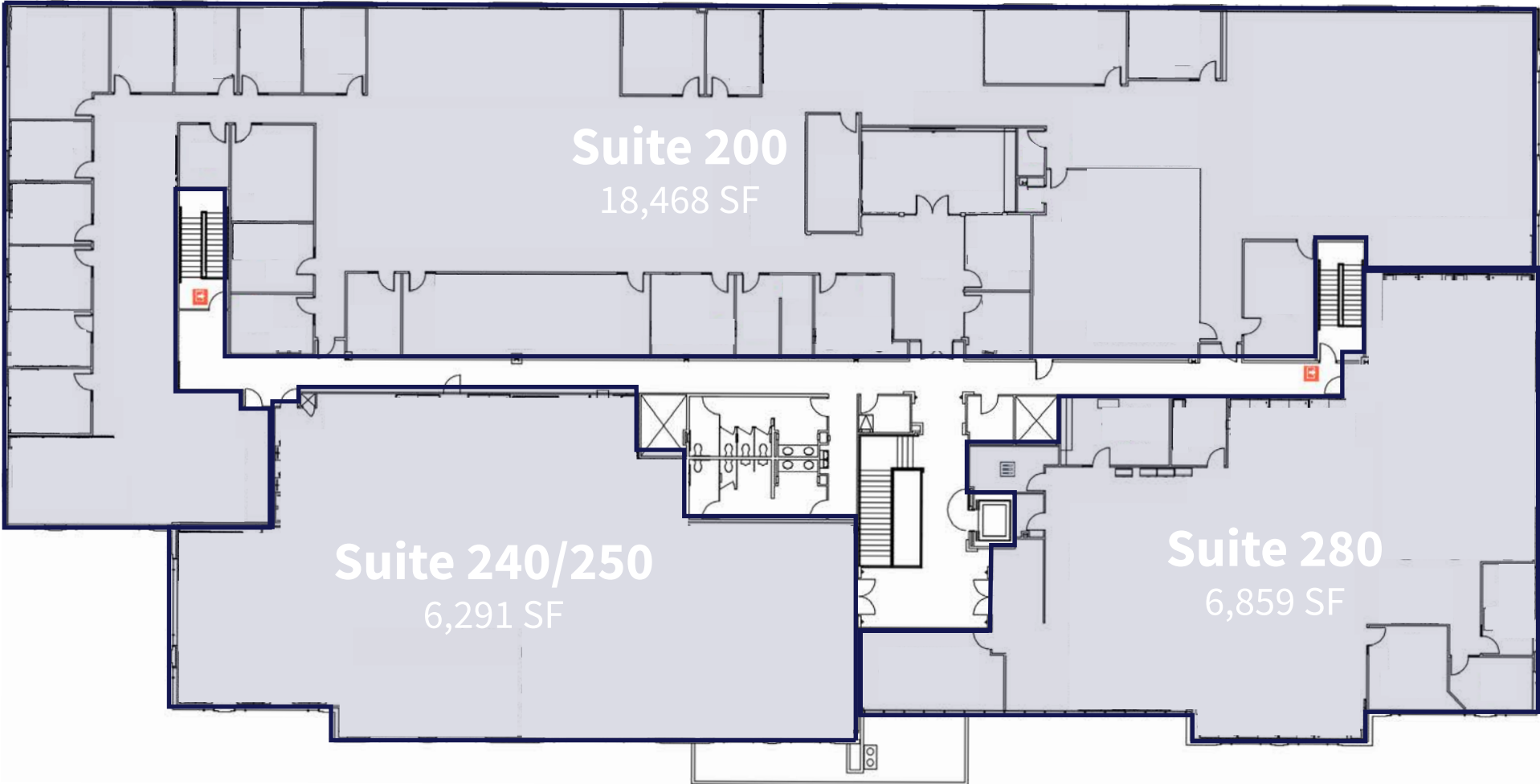
# 1<sup>st</sup> Floor

±31,588 SF Available

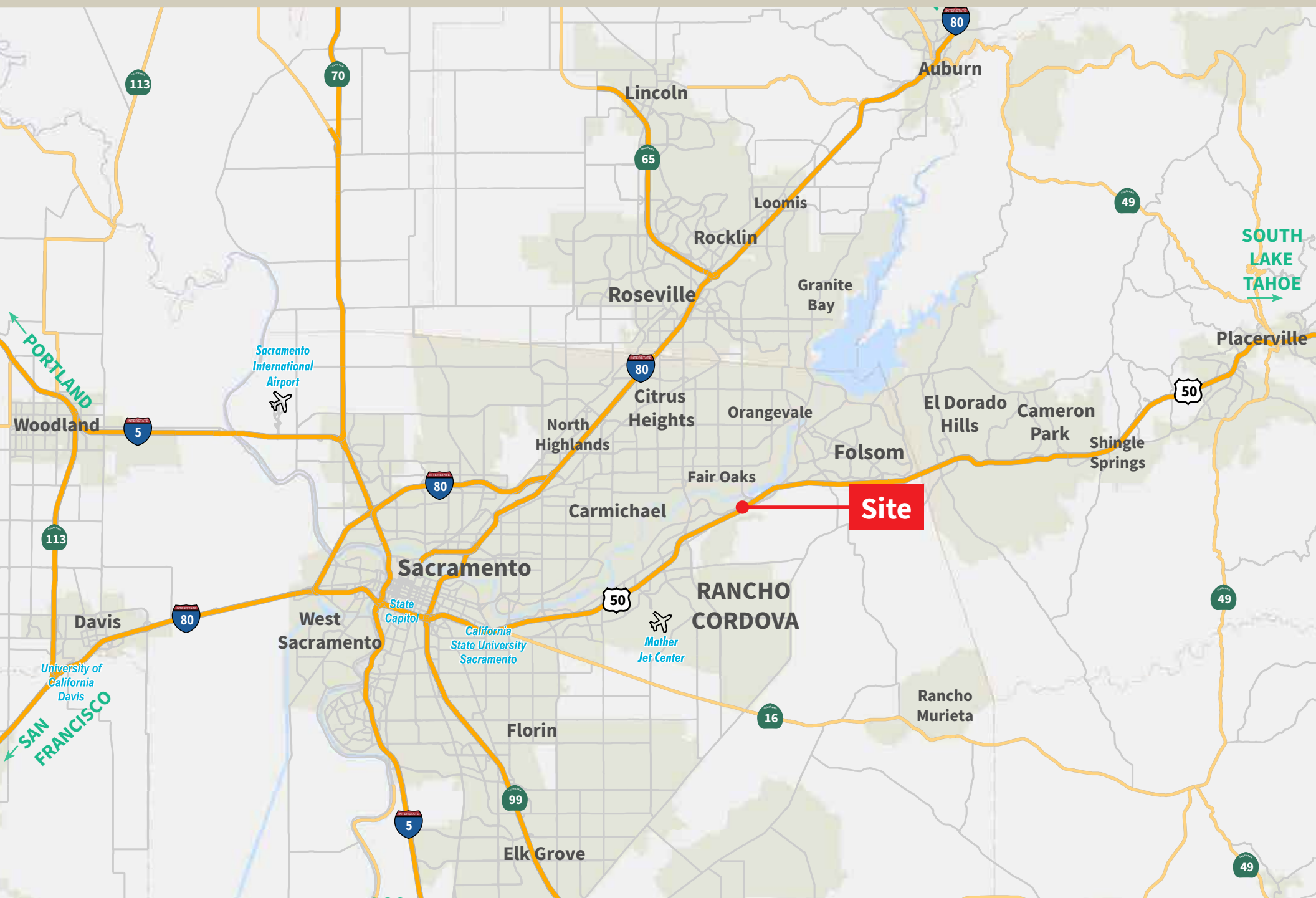


# 2<sup>nd</sup> Floor

±31,618 SF Available



# Regional Map



# 11919

FOUNDATION PLACE

GOLD RIVER, CA 95670



**Michael D. Stassi, CCIM**  
Senior Vice President  
RE License # 01198564  
+1 916 440 1824  
michael.stassi@am.jll.com

**Daniel J. Baker**  
Vice President  
RE License # 01705912  
+1 916 440 1839  
daniel.baker@am.jll.com



©2022 Jones Lang LaSalle IP, Inc. All rights reserved. All information contained herein is from sources deemed reliable; however, no representation or warranty is made to the accuracy thereof.