



1380 S. Main St.

Mansfield, TX 76063

10 ACRES PRIME DEVELOPMENT FOR LEASE

PROPERTY INFORMATION:

- Costco scheduled to open Q3 - 2026
- All utilities to site
- Pad sites available along S. Main St.
- 475' of frontage along S. Main St.
- Surrounded by new affluent residential developments

PRICING:

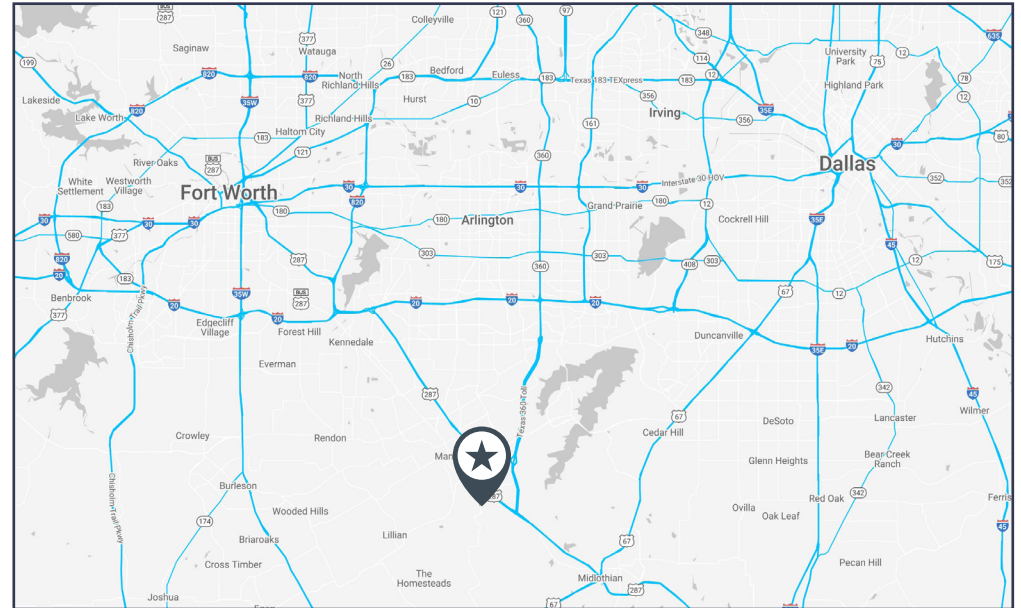
- Contact Broker

AREA ATTRACTIONS:



DEMOGRAPHICS:

DEMOGRAPHICS	1 MILE	3 MILE	5 MILE
2026 Population	8,703	45,697	121,302
2026 Households	2,755	16,476	41,628
2026 Median Household Income	\$125,444	\$120,652	\$122,553
2026 Average Household Income	\$155,236	\$151,000	\$151,879
2026 Median Home Value	\$443.4K+	\$414.9K+	\$404.7K+



Chris Corbin

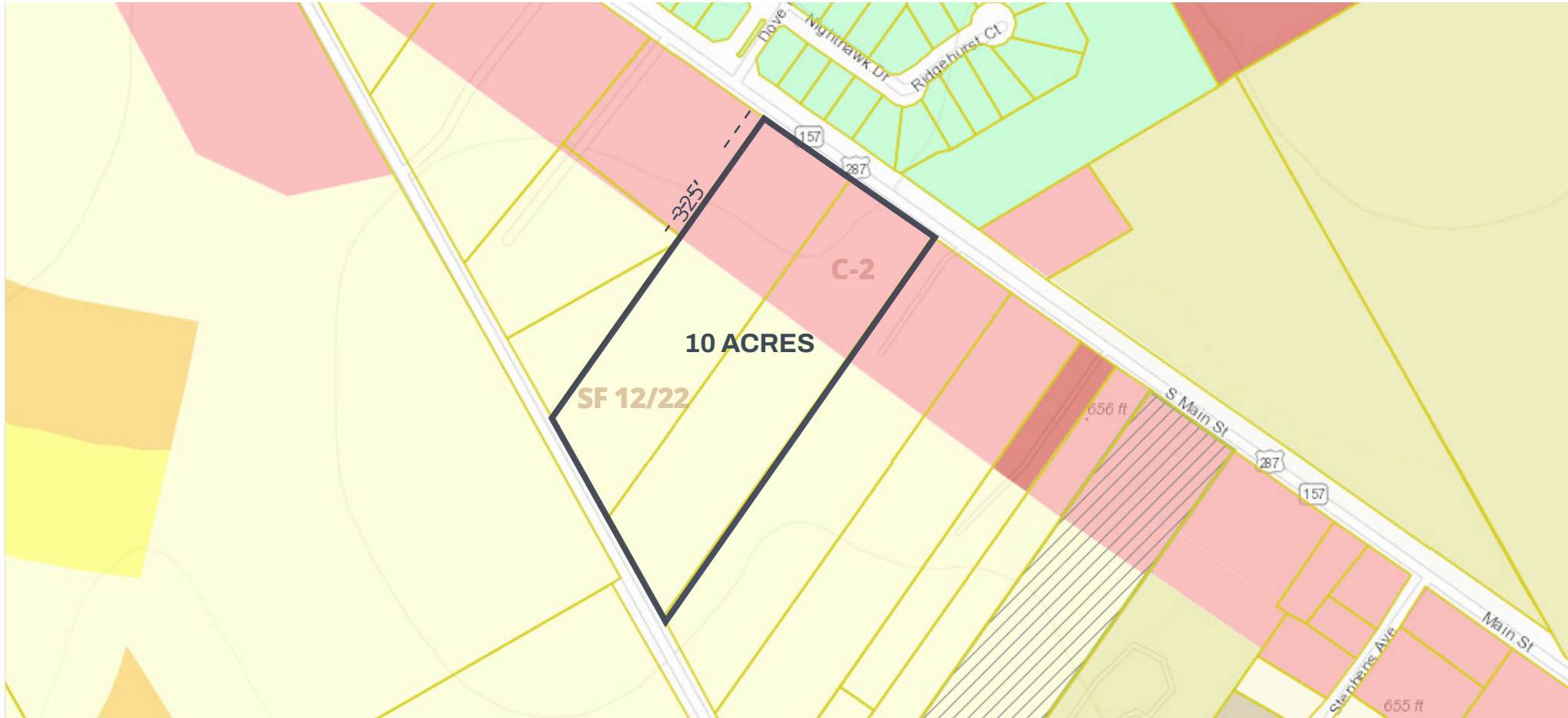
Vice President, Retail
(817) 259-3503
Chris.Corbin@transwestern.com

Ben McBroom

Associate, Land
(817) 259-3538
Ben.McBroom@transwestern.com



Zoning Map

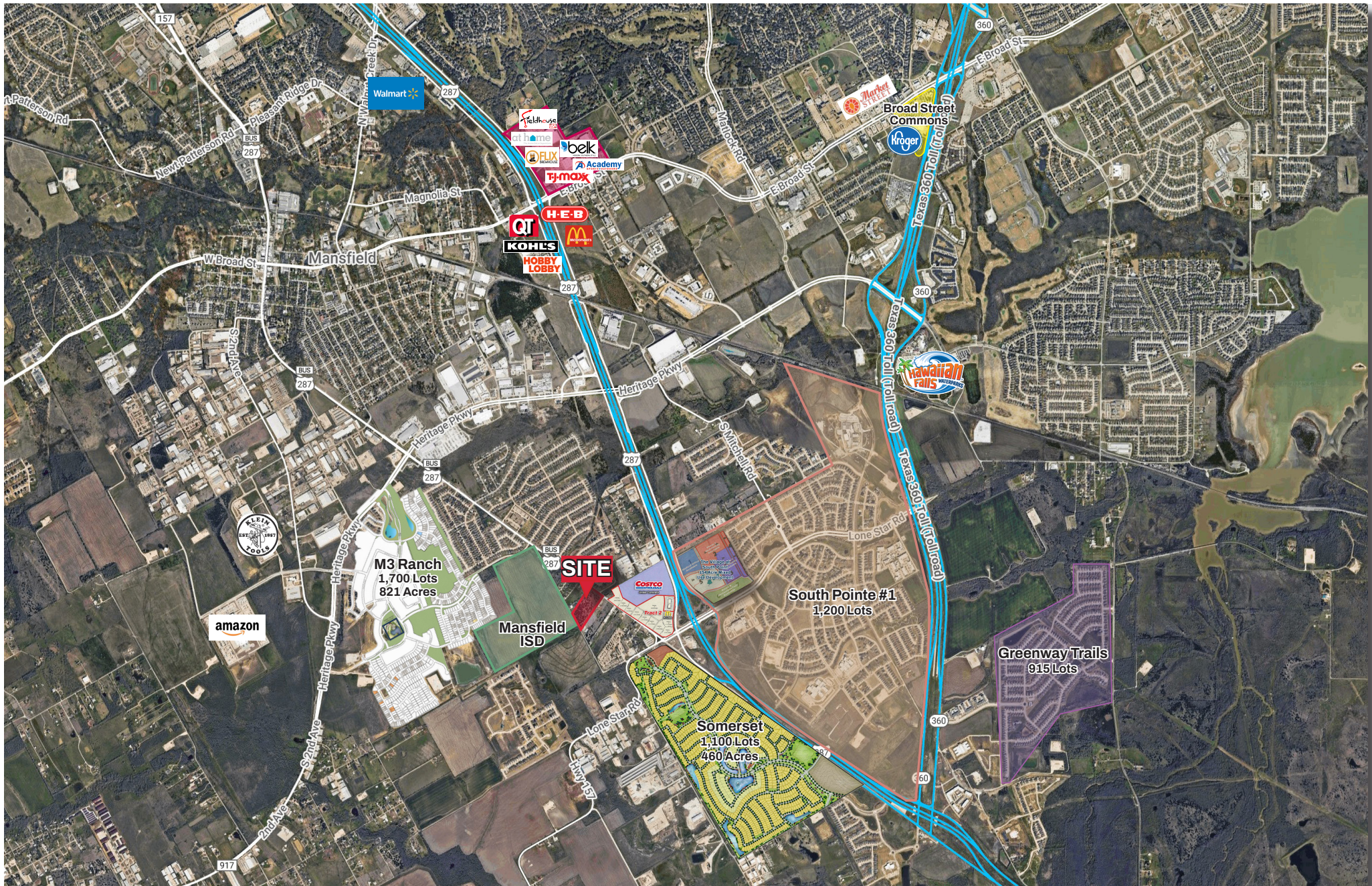


Chris Corbin

Vice President, Retail
(817) 259-3503
Chris.Corbin@transwestern.com

Ben McBroom

Associate, Land
(817) 259-3538
Ben.McBroom@transwestern.com



Chris Corbin

Vice President, Retail
 (817) 259-3503
 Chris.Corbin@transwestern.com

Ben McBroom

Associate, Land
 (817) 259-3538
 Ben.McBroom@transwestern.com





Get in Touch

Chris Corbin

Vice President, Retail
(817) 259-3503
Chris.Corbin@transwestern.com

Ben McBroom

Associate, Land
(817)259-3538
Ben.McBroom@transwestern.com