

N
37° 43' 28"
THE RISE
74° 4' 2"
W
WALNUT CREEK



**GROUND FLOOR
RESTAURANT/RETAIL
OPPORTUNITY**

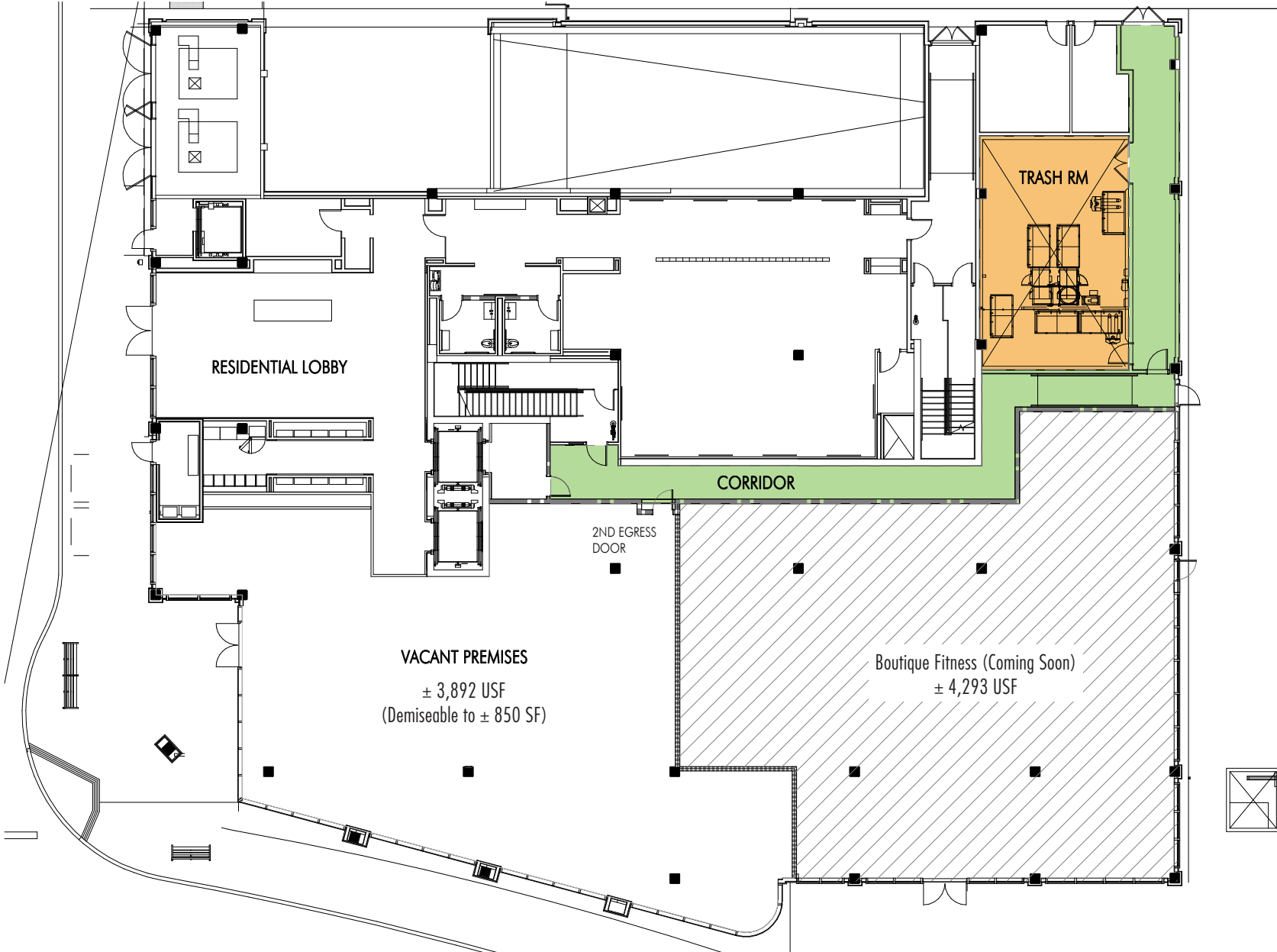


**CHROMATA
RETAIL**

Hines

SITE PLAN

1380 N. California Blvd., Walnut Creek, CA



PROPERTY SUMMARY

1380 N. California Blvd., Walnut Creek, CA

THE RISE
WALNUT CREEK

HIGHLIGHTS

- Brand new, high-profile, mixed-use building in the heart of Downtown Walnut Creek
- +8,000 SF of highly visible space, zoning allows for many uses
- Restaurant-ready shell (venting for Type 1 hood and grease trap interceptor)
- 40 spots of transient parking on site
- Extensive ground floor glass lines along 2 street corners
- Walk score 85 and .5 miles from BART
- Built-in customer base with 77 high-end, luxury residential units above
- Over \$200,000 AHI within 3 mile radius

PROPERTY PROFILE

AVAILABLE

±850 SF – 3,892 SF

RENT

Negotiable

**TRAFFIC
COUNTS**

Mt. Diablo Blvd. - 23,687 ADT

N. California Blvd. - 22,197 ADT





MARKET AERIAL

1380 N. California Blvd. Walnut Creek, CA



THE RISE
N 37° 43' 28"
W 74° 4' 2"
WALNUT CREEK

BART
Ridership
164,700
Weekly

BART .5 Miles

- CVS pharmacy**
- Spizito Coffee**
- Olympia Place**
 - CENTURY THEATRES
 - planet fitness
 - Fleming's
 - sleep number
- the Habit BURGER GRILL**
- charles SCHWAB**
- Yogurtland**
- Main Street Plaza**
 - ROSS DRESS FOR LESS
 - PAPER SOURCE
 - GOTT'S
 - Sunrise Bistro & Catering
- petco**
- TRADER JOE'S**
- pet food express**
- Starbucks**
- Shake Shack**
- Peets COFFEE**
- SAUCED**
- BROADBERRY**
- LIMON ROTISSERIE**
- Rooted**
- Havana**
- Galpao Gaucho**
- TTK**
- Lita**
- WOODHOUSE**
- THE CORNERS**
 - Tiffany & Co.
 - Capital One
 - LC LENS CRAFTERS
 - STEELE BEANS
- Target**
- 1500 Mt. Diablo**
 - teleferic
 - ROOFTOP
 - vineyard vines
- Broadway Pointe**
 - RESTORATION HARDWARE
 - WILLIAMS-SONOMA
 - POTTERY BARN
 - ETHAN ALLEN
- The Agora**
 - california PIZZA KITCHEN
 - T-Mobile
- Plaza Escuela**
 - theBakeFactory
 - CHIPOTLE
 - THE SHED STORE
 - TALBOTS
 - RUTH'S CHRIS STEAK HOUSE
 - BARNES & NOBLE BOOKSELLERS
- Broadway Plaza**
 - NORDSTROM
 - macy's
 - Apple
 - TESLA
 - Sur la table
 - BANANA REPUBLIC
 - ZARA
 - J.CREW
- Neiman Marcus**
- SAFeway**
- WHOLE FOODS MARKET**

*Demographic Source: Sites USA REGIS Online 7/26/24

DEMOGRAPHICS

1380 N. California Blvd. Walnut Creek, CA



POPULATION

1 MILE	3 MILES	5 MILES
18,188	106,471	209,470



DAYTIME POPULATION

1 MILE	3 MILES	5 MILES
30,779	66,996	106,270



ESTIMATED AVERAGE HOUSEHOLD INCOME

1 MILE	3 MILES	5 MILES
\$195,417	\$207,258	\$217,996



ESTIMATED HOUSEHOLDS

1 MILE	3 MILES	5 MILES
8,860	48,643	87,412



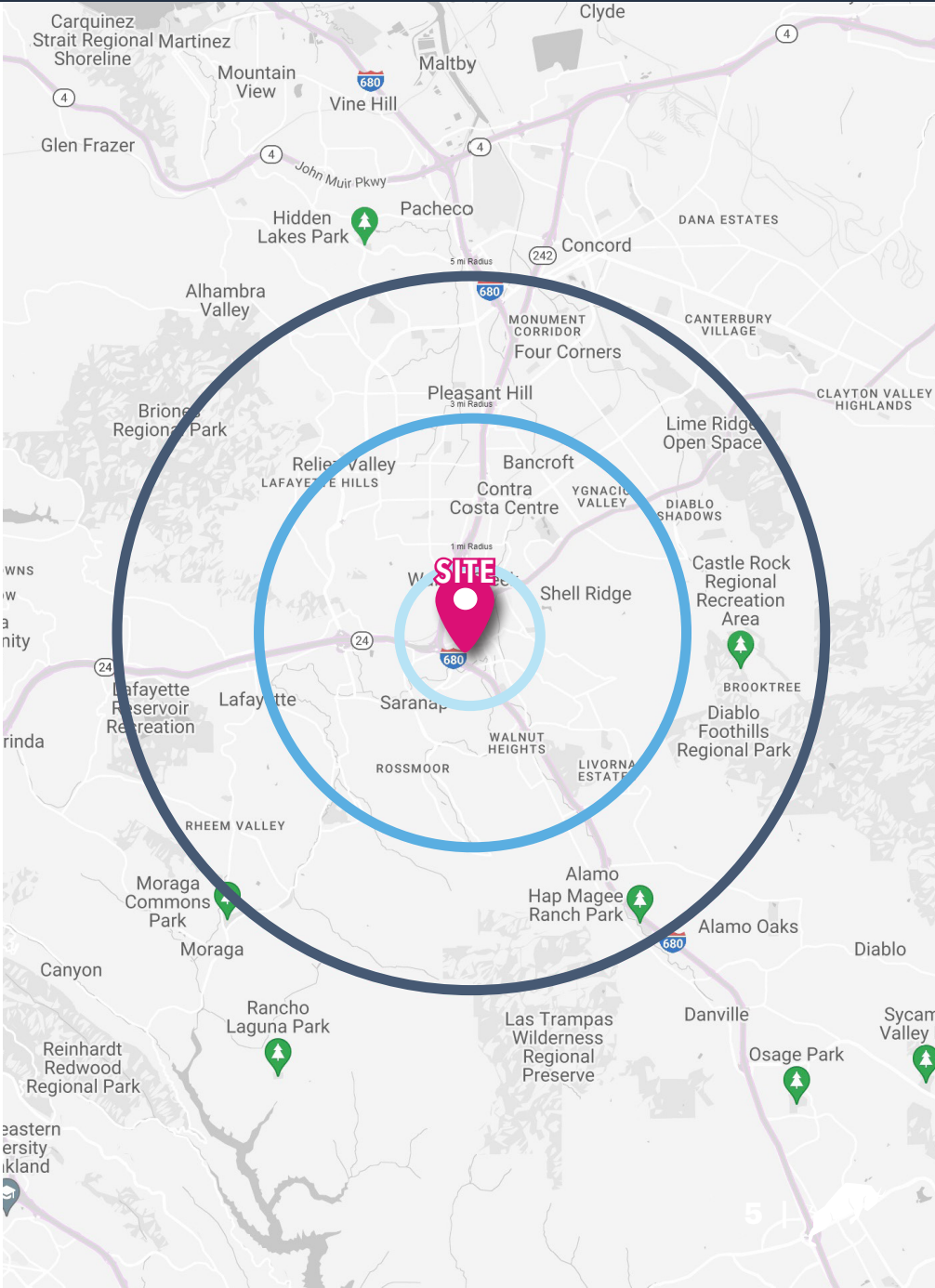
COLLEGE DEGREE BACHELOR OR HIGHER

1 MILE	3 MILES	5 MILES
70.2%	68.9%	63.3%



TOTAL RETAIL EXPENDITURES

1 MILE	3 MILES	5 MILES
\$474.76 M	\$2.74 B	\$5.12 B



*Demographic Source: Sites USA REGIS Online 7/26/24

ABOUT WALNUT CREEK

1380 N. California Blvd., Walnut Creek, CA

LOCATION DESCRIPTION

Downtown Walnut Creek is the leading retail shopping district in the Bay Area. It offers an impressive variety of retailers, restaurants and the arts, attracting many prestigious brands like Nordstrom, Tiffany & Co., Apple, Tesla and Crate & Barrel. The area is renowned for its rich cultural tapestry, diverse annual events and festivals, and enjoyable climate. It is a cultural hub of Contra Costa County, catering to a large regional market.

Located near the I-680 and Hwy 24 corridors in conjunction with its BART station, Walnut Creek offers a unique blend of urban and suburban living. Convenient commuting options and abundant housing invites the opportunity to live 'close to the action' in a safe, clean and welcoming environment.



Walkscore

85



Dining

Expanded outdoor dining program



Transportation

Near Bart & Freeway Onramp



Shopping

2.5M SF



Offices

2.7M SF



N
37° 43' 28"

THE RISE

74° 4' 2"
W

WALNUT CREEK

MEGHAN BASSO

(925) 488-4143
meghan@lockhouse.com
License #01880016

TATIANA GUZMAN

(925) 783-2480
tatiana@chromata.com
License #02111438

Hines

CHROMATA
RETAIL

