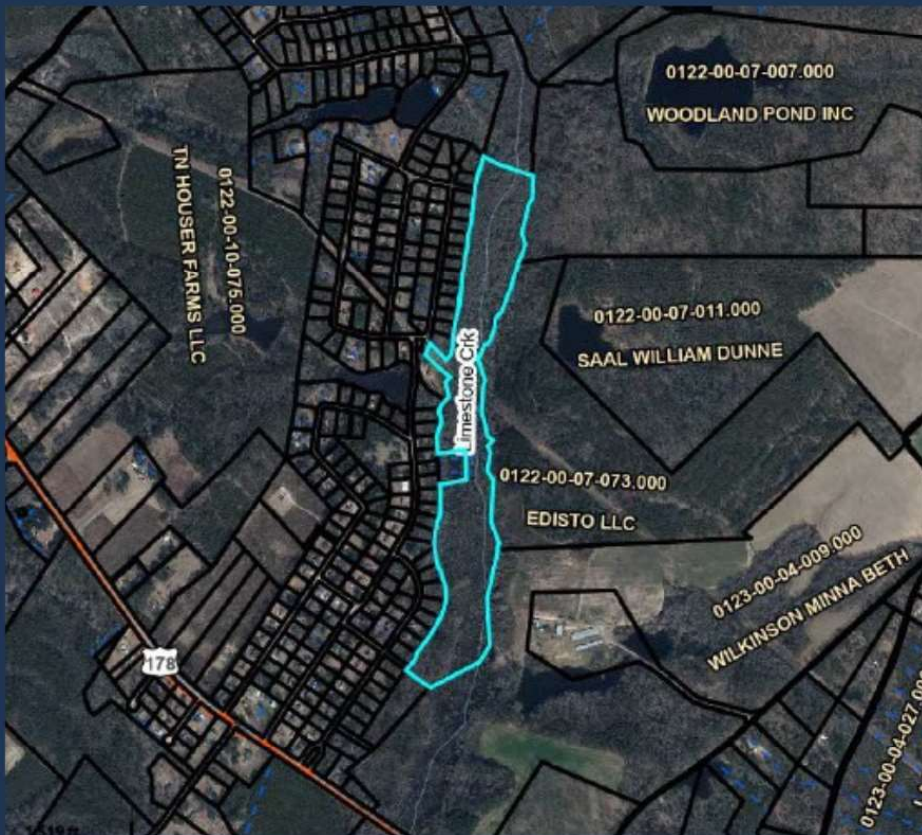




THE LITCHFIELD COMPANY REAL ESTATE

— COMMERCIAL —

FOR SALE +/- 48 ACRES \$109,000
North Road, Orangeburg SC



- **48 Acres for Recreation, Hunting, etc.**
- **Located off of North Road and adjacent to Country Oaks**
- **2025 Taxes- \$226.20**
- **Tax Map #0122-00-07-035.000**

PRIME LOCATION FOR SALE.

CALL FOR DETAILS

Cal Bruner

803-535-6208

calb@thelitchfieldcompany.com

Libby Bryant

803-535-6254

libbyb@thelitchfieldcompany.com

48 Available Acres

