

**SALE**

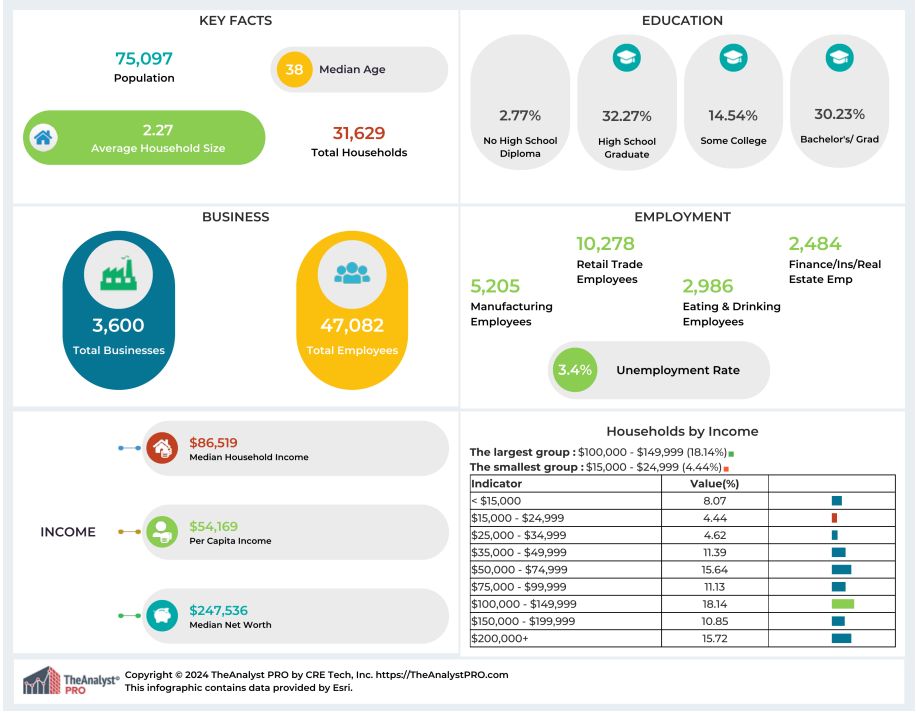
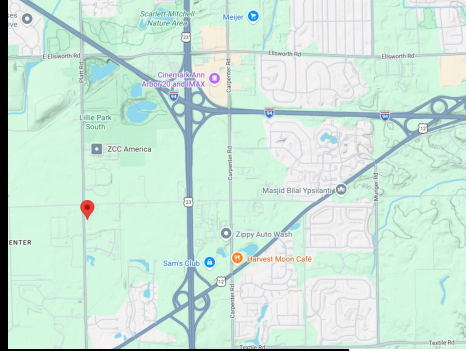
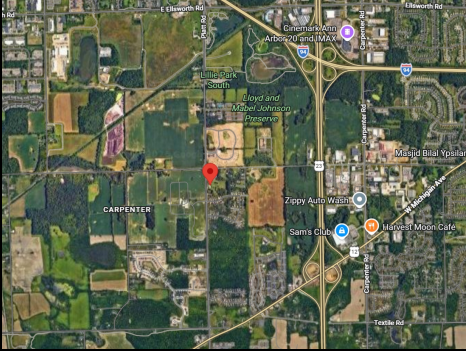
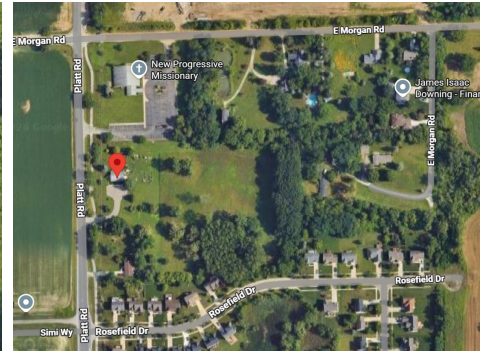
**5141 PLATT  
ROAD**  
*5141 Platt Road*  
*Ann Arbor, Michigan 48108*

Discover a unique redevelopment opportunity in the high-growth area of Pittsfield Township. This property spans approximately six acres of land, offering ample space for a variety of development projects. The parcel currently houses a 1,700 square foot former daycare building, which can be transformed to suit your needs or replaced entirely. The property is zoned for Single Family Residential use, making it an ideal location for a new housing development or a large private residence. With its prime location in a rapidly expanding area, this property presents a rare opportunity for developers and investors alike.

## **Call for Price**

**Land Size: 6.00 Acres**  
**Property Size: 1,724 Sq. Ft.**  
**Year Built: 1990**

Contact:  
**313.312.5764**  
**TREVOR BROOKS**  
License: 6501374378  
t.brooks@kwcommercial.com



This information has been obtained from sources believed reliable. We have not verified it and make no guarantee, warranty or representation about it. Any projections, opinions, assumptions or estimates used are for example only and do not represent the current or future performance of the property. You and your advisors should conduct a careful, independent investigation of the property to determine to your satisfaction the suitability of the property for your needs. Photos herein are the property of their respective owners and use of these images without the express written consent of the owner is prohibited.

Contact:  
**313.312.5764**  
**TREVOR BROOKS**  
 License: 6501374378  
 t.brooks@kwcommercial.com