

PROPERTY FOR LEASE

North Woodward Internist Building

555 W. 14 Mile Road Clawson, MI 48017

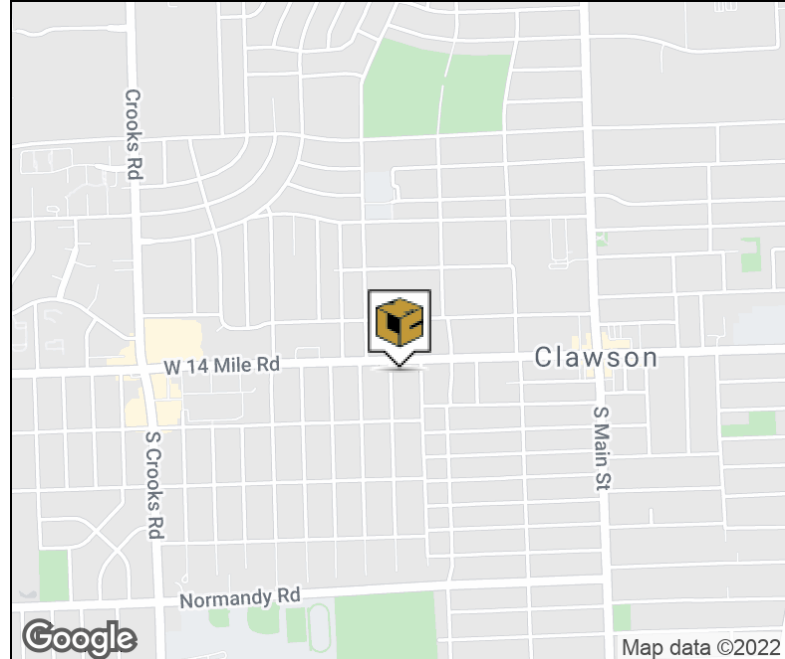


CORFAC INTERNATIONAL



Property Highlights

- 1,760 Square Feet Available For Lease
- Move-In Ready Medical Suite
- Internal Medicine, OB/GYN & Physical Therapy in Building
- Full Service Lease Rate
- Monument Signage Available



FOR MORE INFORMATION:

Aaron Smith

Vice President
248.637.3515
asmith@lmcap.com

Mason L. Capitani, SIOR

Managing Partner
248.637.7795
mlcapitani@lmcap.com



CONNECT WITH US

248.637.9700 | www.Lmcap.com

Information contained herein was obtained from sources deemed to be reliable but is not guaranteed. Subjects to prior sales, changes of price or withdrawal.

PROPERTY FOR LEASE

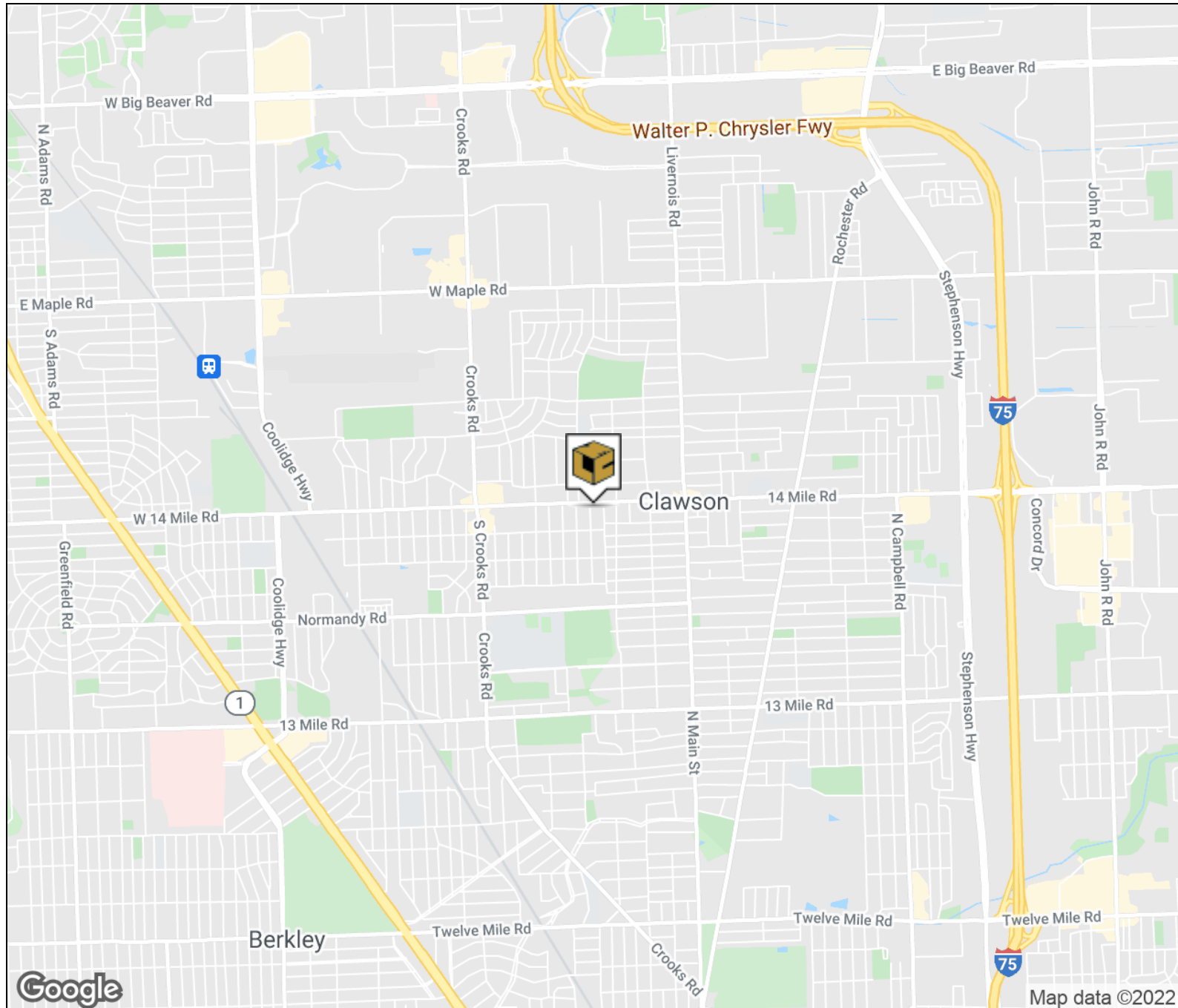
North Woodward Internist Building

555 W. 14 Mile Road Clawson, MI 48017



CORFAC INTERNATIONAL

LOCATION MAP



FOR MORE INFORMATION:

Aaron Smith

Vice President
248.637.3515
asmith@lmcap.com

Mason L. Capitani, SIOR

Managing Partner
248.637.7795
mlcapitani@lmcap.com



CONNECT WITH US

248.637.9700 | www.Lmcap.com

Information contained herein was obtained from sources deemed to be reliable but is not guaranteed. Subjects to prior sales, changes of price or withdrawal.

PROPERTY FOR LEASE

North Woodward Internist Building

555 W. 14 Mile Road Clawson, MI 48017



CORFAC INTERNATIONAL

OFFICE PROPERTY DETAILS

Location Information

Street Address	555 W. 14 Mile Road
City, State, Zip	Clawson, MI 48017
County	Oakland
Cross-Streets	Redruth Ave/14 Mile Rd
Nearest Highway	I-75

Building Information

Building Size	13,833 SF
Building Class	B
Occupancy %	87.2
Tenancy	Multiple
Number of Floors	2
Year Built	1983
Gross Leasable Area	13,833 SF
Load Factor	N/A
Annual Escalations	2.5%
Partition Allowance	Negotiable

Lease Rate

\$23.50 SF/yr Full Service

Property Information

Property Type	Office
Property Subtype	Medical
Zoning	Office
Lot Size	0.52 Acres
APN #	25-04-201-001, 25-04-201-006

Parking & Transportation

Parking Type	Surface
Parking Ratio	4.91

Available Suites

Suite 210 - 1,760 SF	\$23.50 Full Service
----------------------	----------------------

FOR MORE INFORMATION:

Aaron Smith

Vice President
248.637.3515
asmith@lmcap.com

Mason L. Capitani, SIOR

Managing Partner
248.637.7795
mlcapitani@lmcap.com



CONNECT WITH US

248.637.9700 | www.Lmcap.com

Information contained herein was obtained from sources deemed to be reliable but is not guaranteed. Subjects to prior sales, changes of price or withdrawal.

PROPERTY FOR LEASE

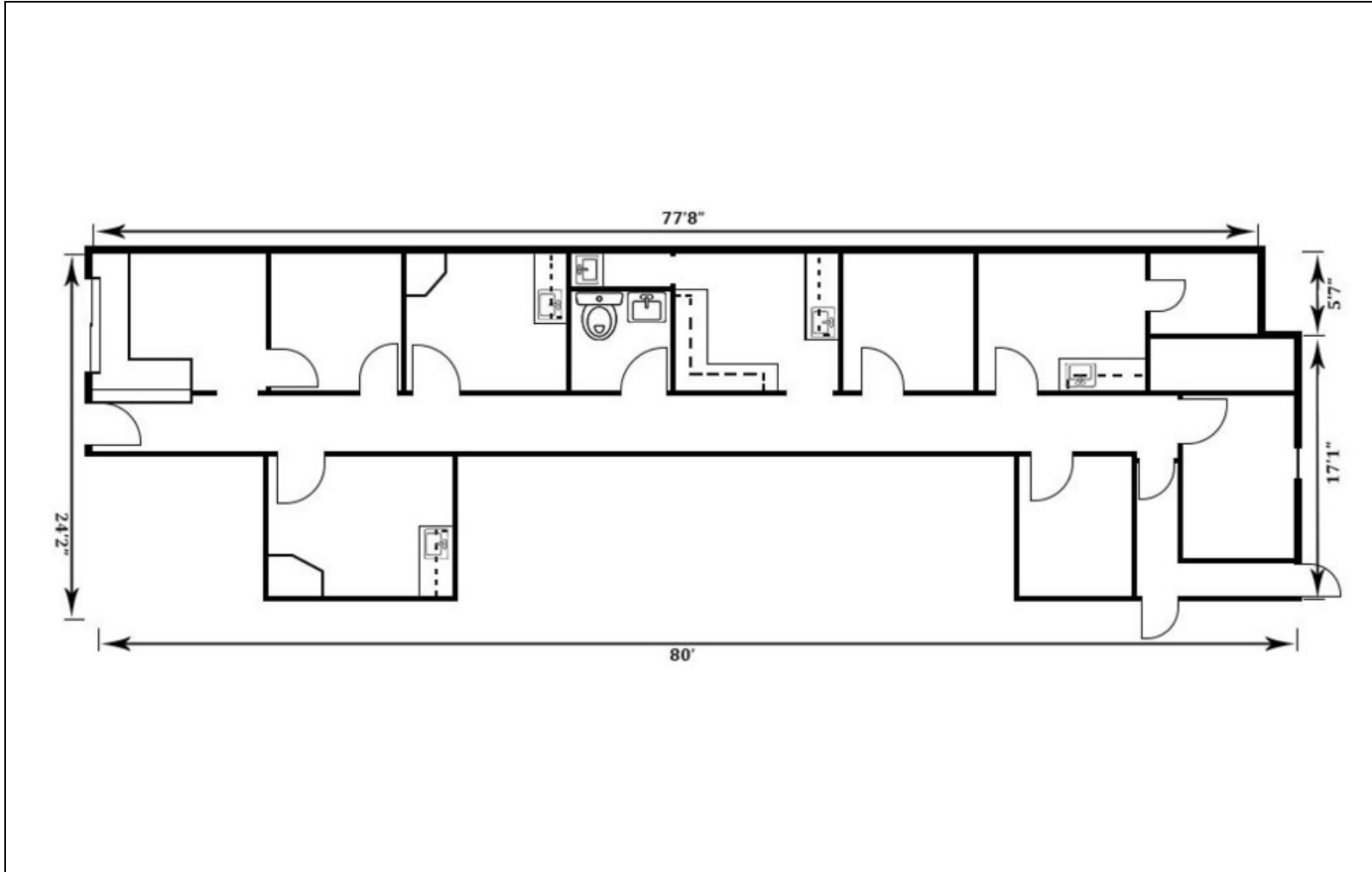
North Woodward Internist Building

555 W. 14 Mile Road Clawson, MI 48017



CORFAC INTERNATIONAL

SUITE 210 FLOOR PLAN



Available Spaces

Suite	Tenant	Size (SF)	Lease Type	Lease Rate
Suite 210	Available	1,760 SF	Full Service	\$23.50 SF/yr

FOR MORE INFORMATION:

Aaron Smith
Vice President
248.637.3515
asmith@lmcap.com

Mason L. Capitani, SIOR
Managing Partner
248.637.7795
mlcapitani@lmcap.com



CONNECT WITH US

248.637.9700 | www.Lmcap.com

Information contained herein was obtained from sources deemed to be reliable but is not guaranteed. Subjects to prior sales, changes of price or withdrawal.