



# PROPERTY OVERVIEW

Cushman & Wakefield is proud to present

## 1627 BROADWAY

Prime Times Square opportunity — a 36,000 SF flagship building boasting 175 feet of wraparound frontage along Broadway and West 50th Street. The upper floors were formerly home to the Snapple Theatre, while the ground and second floors were occupied by Walgreens. The property can be delivered fully vacant, offering a rare chance for a single user or multiple tenants, and includes full LED signage rights on West 50th Street, providing unparalleled brand exposure in one of the world's most iconic retail destinations.



# SPACE DETAILS

<b>FLOOR</b>	GROUND	9,000 SF
	SECOND	9,000 SF
	THIRD	9,000 SF
	FOURTH	9,000 SF
	<b>TOTAL</b>	<b>36,000 SF</b>

**ASKING RENT** UPON REQUEST

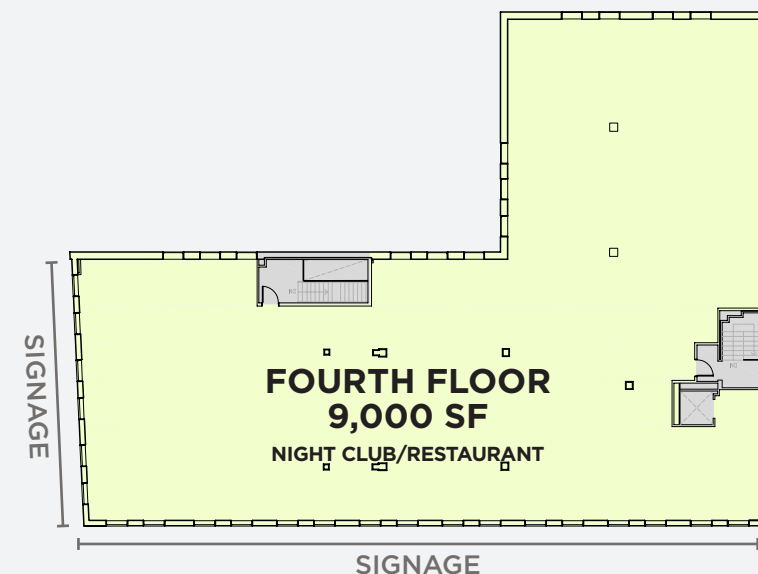
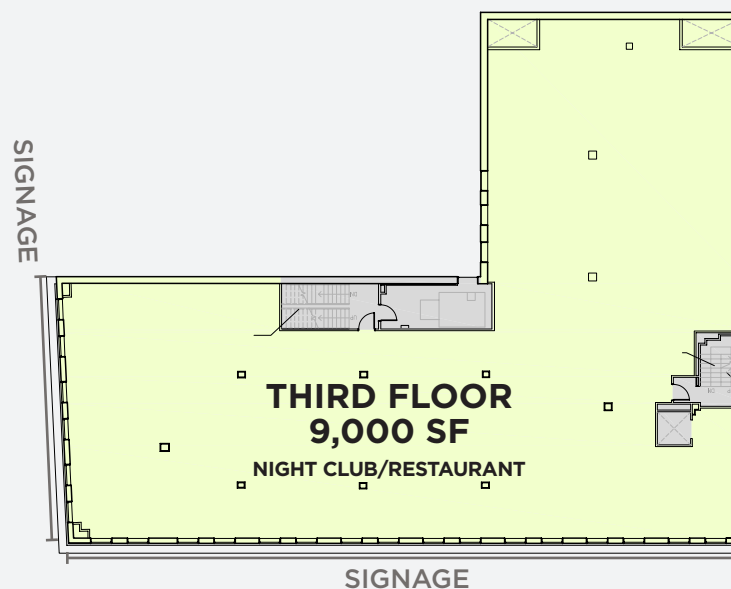
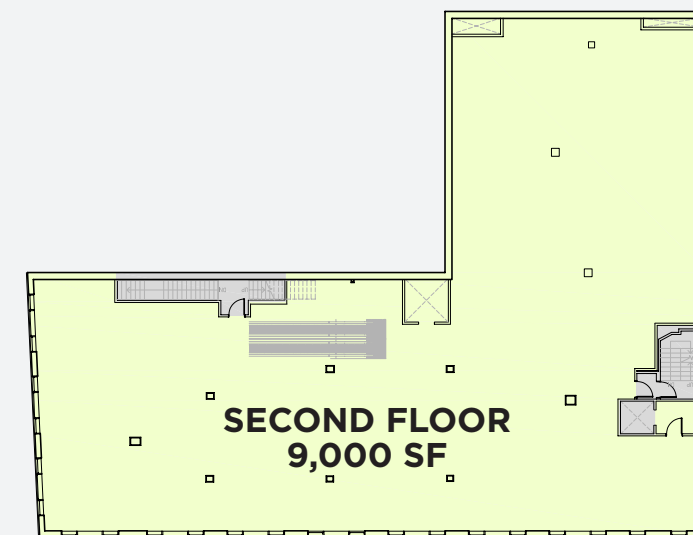
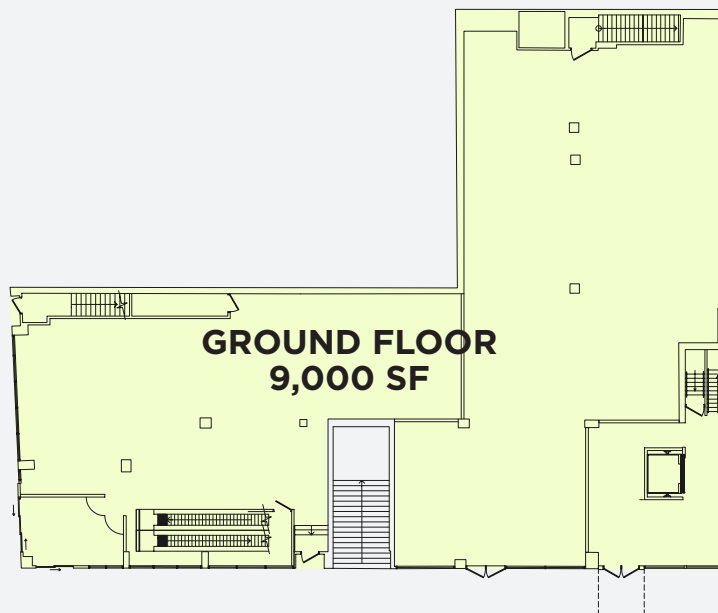
**POSSESSION** IMMEDIATE

**TERM** NEGOTIABLE

**FEATURES** 175' OF WRAPAROUND FRONTAGE

**AMPLE SIGNAGE OPPORTUNITIES  
ON BOTH BROADWAY AND WEST 50TH STREET**

# FLOOR PLANS



# SIGNAGE OPPORTUNITIES

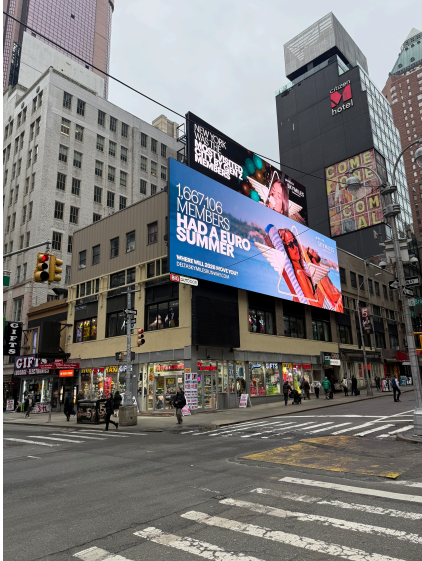


# SIGNAGE OPPORTUNITIES

INLINE SPACE ON W 50TH STREET



EXISTING LED SIGNAGE AVAILABLE ON W 50TH STREET



STATIC SIGNAGE OPPORTUNITY on 50TH STREET



LED SIGNAGE OPPORTUNITY on BROADWAY



# NEARBY TRANSPORTATION & ATTRACTIONS

THEATER DISTRICT  
**12.3M**  
 ANNUAL VISITORS

**1**

50th Street Station  
**5.9M**  
 ANNUAL RIDERSHIP

 HOTEL  
 THEATER



## NEIGHBORING OFFICE TENANTS:

- CBS
- Barclays
- Gensler
- Yahoo
- Morgan Stanley
- Showtime
- TPG
- Warner Music
- Bleacher Report
- Comcast/ NBC Universal
- Victoria's Secret

# 1627 BROADWAY

ON THE CORNER OF BROADWAY AND WEST 50TH STREET

**IAN LERNER**

212.841.5948

Ian.Lerner@CushWake.com

**ED NELSON**

212.660.7769

Ed.Nelson@CushWake.com



**CUSHMAN &  
WAKEFIELD**