



50 Franklin Street
Floor 2
Boston, MA 02110

FLEXIBLE WORKSPACE 20 Person Suite

AVAILABLE NOW
1000 SF
CALL 617 212 5734

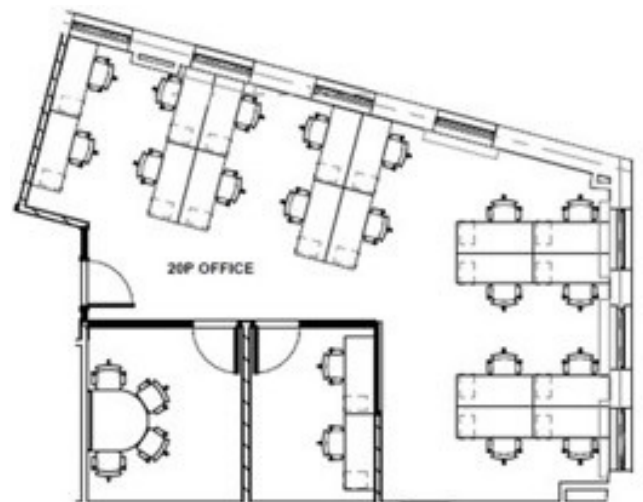
Situated in the heart of Boston's Financial District, a short walk from Downtown Crossing and South Station, a new era of workspace excellence awaits.

A spacious, move-in-ready private suite designed for teams of up to 20 people. This bright, fully furnished workspace features high ceilings, oversized arched windows that fill the office with natural light, and an efficient open layout that supports both collaboration and individual productivity.

The suite includes a private executive office and dedicated huddle room, providing the perfect balance of focused work, team meetings, and leadership space. Complete with sit-to-stand desks, ergonomic seating, and modern furnishings, this turnkey office is ideal for growing companies seeking a professional, polished workplace in the heart of Boston.

20 Person Enterprise Suite

- Dedicated Suite for 20 people
- Over 1000 SF of workspace
- Fully Furnished with sit-stand desks, ergonomic seating
- Workspace is Pet Friendly
- WiFi and ethernet enabled, Tier 1 internet connectivity
- Stunning views of Downtown Crossing
- Steps to Dining and Shopping





Amenities

- Access to an additional 2000 sf
- 10 Person Meeting Room with Video Conferencing
- Full Kitchen Cafe
- Complimentary Coffee & Twinings Tea,
- Filter Quench water and daily fruit water
- Common Area Wokspace, break-out areas
- Fully Staffed Concierge & Reception Area
- Phone Booths
- Wellness Room
- Mail & Package handling
- All utilities and cleaning included

Call 617-212 5734 for pricing.

