



601 N Glenville
Richardson, Texas 75081

2,860 - 5,500 SF AVAILABLE

BUILDING SPECS

- Total SF: 34,559 SF
- Vacancy SF: 2,860 - 5,500 SF
- Clear height: 12'
- Parking ratio: 2.92/1,000 SF
- Built in 1981



This information is deemed reliable, however Holt Lunsford Commercial makes no guarantees, warranties or representation as to the completeness or accuracy thereof.

For more information, contact:

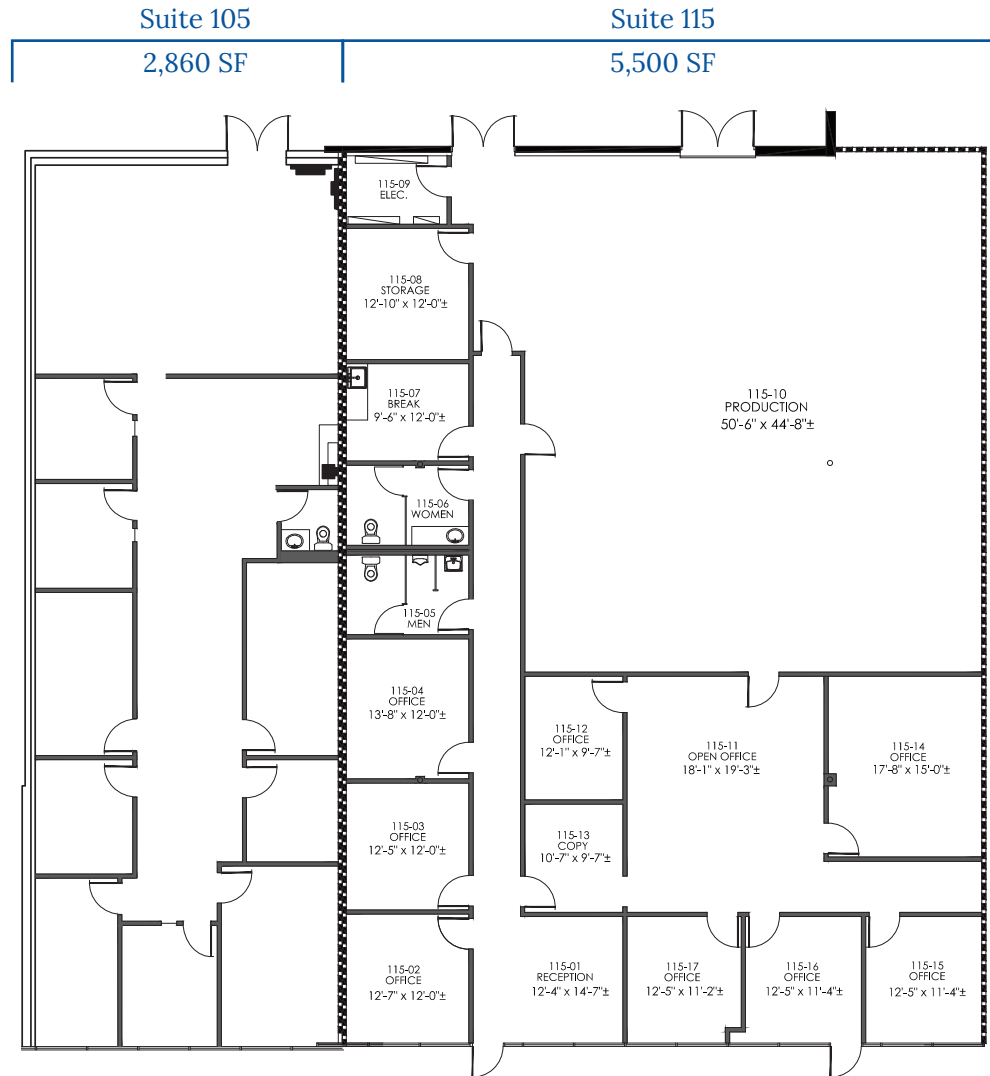
Josh Barnes, SIOR
972.280.8253
jbarnes@holtlunsford.com

Weston Porter
214.442.8933
wporter@holtlunsford.com



601 N Glenville
Richardson, Texas 75081

FLOOR PLAN



SUITE 105 INFORMATION

- Vacancy SF: 2,860 SF
- 100% HVAC
- Grade level loading

SUITE 115 INFORMATION

- Vacancy SF: 5,500 SF
- 100% HVAC
- Grade level loading

This information is deemed reliable, however Holt Lunsford Commercial makes no guarantees, warranties or representation as to the completeness or accuracy thereof.

For more information, contact:

Josh Barnes, SIOR
972.280.8253
jbarnes@holtlunsford.com

Weston Porter
214.442.8933
wporter@holtlunsford.com



RICHARDSON BUSINESS CENTER



This information is deemed reliable, however Holt Lunsford Commercial makes no guarantees, warranties or representation as to the completeness or accuracy thereof.

For more information, contact:

Josh Barnes, SIOR
972.280.8253
jbarnes@holtlunsford.com

Weston Porter
214.442.8933
wporter@holtlunsford.com



