

# 19 STERLING ROAD

Billerica, MA

## Flex Space for Sublease

7,010 SF



Leasing Information:  
617.951.4100

## Lincoln

**Tim Latham**

857.212.6314

tlatham@lpc.com

**Mike Ogasapian**

781.439.5945

michael.ogasapian@lpc.com

**James Tambone**

978.578.6111

jtambone@lpc.com

**Will Greer**

617.951.4119

wgreer@lpc.com

One Beacon  
Suite 2400  
Boston, MA 02108

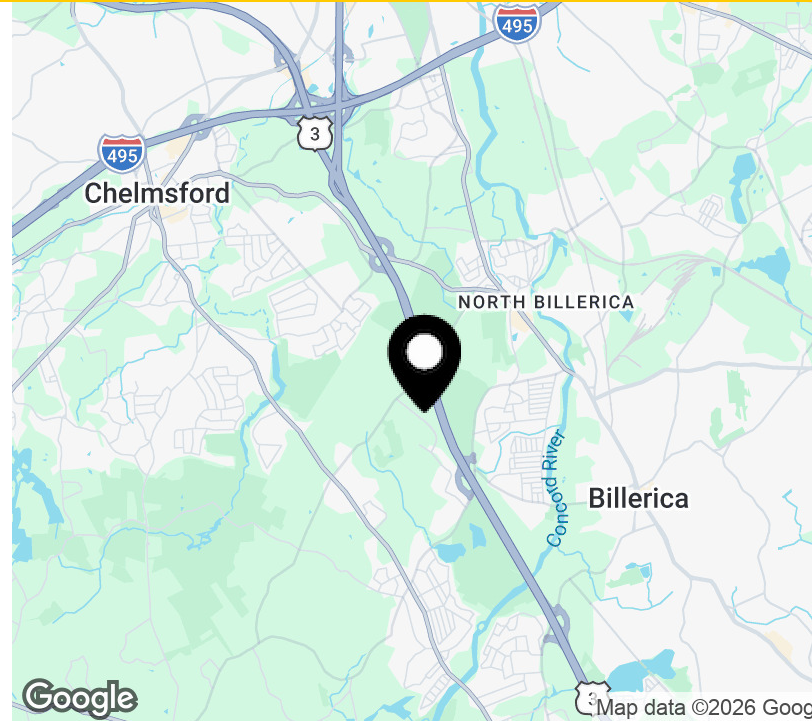
[www.lpc.com](http://www.lpc.com)

# 19 STERLING ROAD

Billerica, MA

Flex/Industrial For Sublease

7,010 SF



## Property Highlights

- Access to 2 tailboard-height loading docks
- 22' clear height
- 3/1000 parking ratio
- Conveniently located near Route 3, I-95 and I-495

## Availabilities

19 Sterling Road

*\*Sublease through 5/30/29*

## SF

7,010 SF

## Lease Rate

Negotiable

**Tim Latham**

857.212.6314  
tlatham@lpc.com

**Mike Ogasapian**

781.439.5945  
michael.ogasapian@lpc.com

**James Tambone**

978.578.6111  
jtambone@lpc.com

**Will Greer**

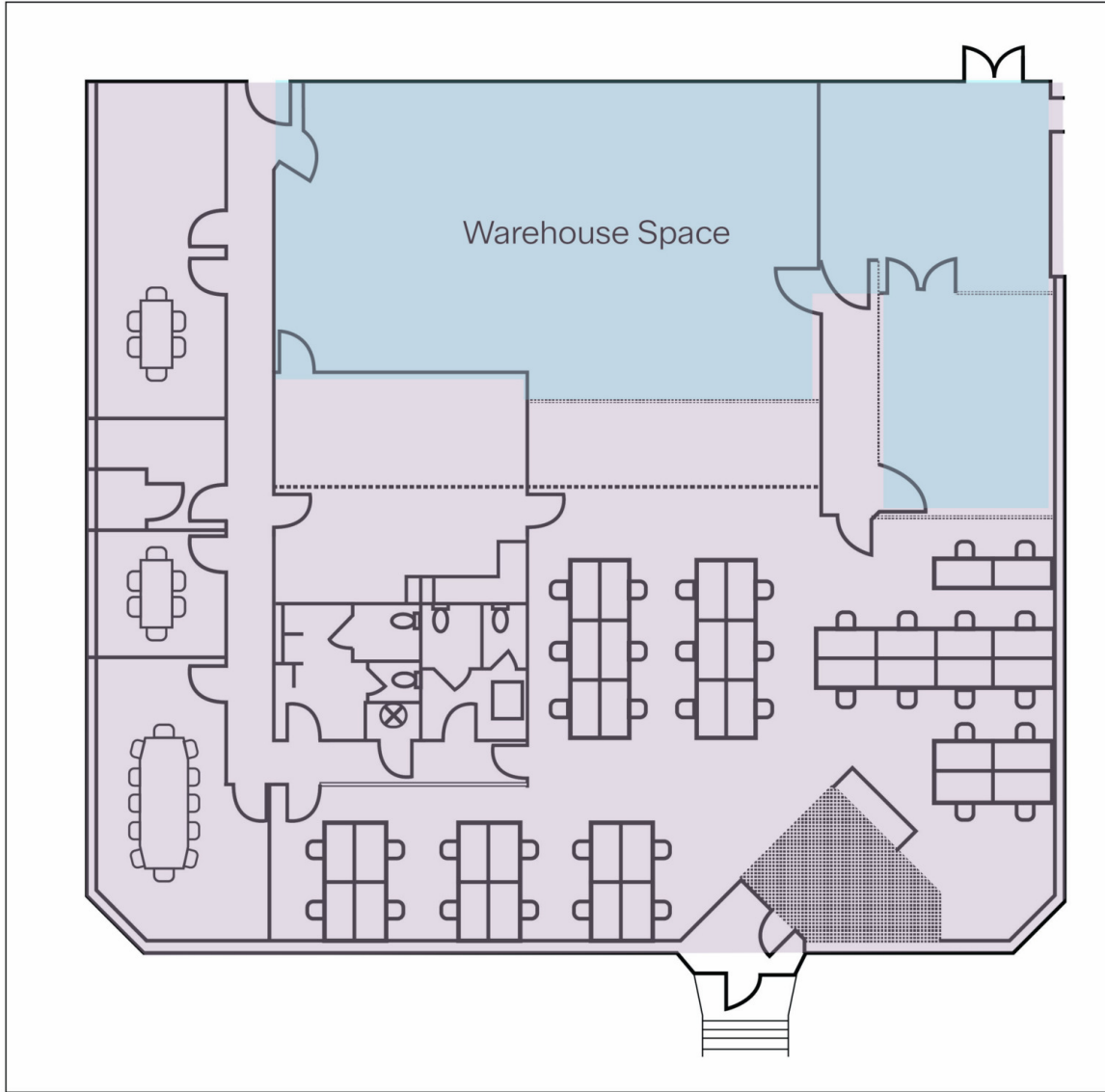
617.951.4119  
wgreer@lpc.com

**Lincoln**

# 19 STERLING ROAD

Billerica, MA

7,010 SF



## Suite

## Size



19 Sterling Road

7,010 SF

**Tim Latham**

857.212.6314  
tlatham@lpc.com

**Mike Ogasapian**

781.439.5945  
michael.ogasapian@lpc.com

**James Tambone**

978.578.6111  
jtambone@lpc.com

**Will Greer**

617.951.4119  
wgreer@lpc.com

# Lincoln

# 19 STERLING ROAD

Billerica, MA

Property Photos



**Tim Latham**

857.212.6314  
tlatham@lpc.com

**Mike Ogasapian**

781.439.5945  
michael.ogasapian@lpc.com

**James Tambone**

978.578.6111  
jtambone@lpc.com

**Will Greer**

617.951.4119  
wgreer@lpc.com

**Lincoln**

# 19 STERLING ROAD

Billerica, MA

**Tim Latham**

857.212.6314

tlatham@lpc.com

**Mike Ogasapian**

781.439.5945

michael.ogasapian@lpc.com

**James Tambone**

978.578.6111

jtambone@lpc.com

**Will Greer**

617.951.4119

wgreer@lpc.com

One Beacon

Suite 2400

Boston, MA 02108

www.lpc.com | 617.951.4100

**Lincoln**