

# RETAIL SPACE FOR LEASE

37 Buck Creek Plaza Suite 400 ♦ Alabaster, AL ♦ 35007 ♦ Shelby County



1,500 SF Available | Price: \$2,250 per month

Mark Dinan, MBA, CCIM

(c) 205-980-3434

(c) 205-243-3434

markdinan@bellsouth.net

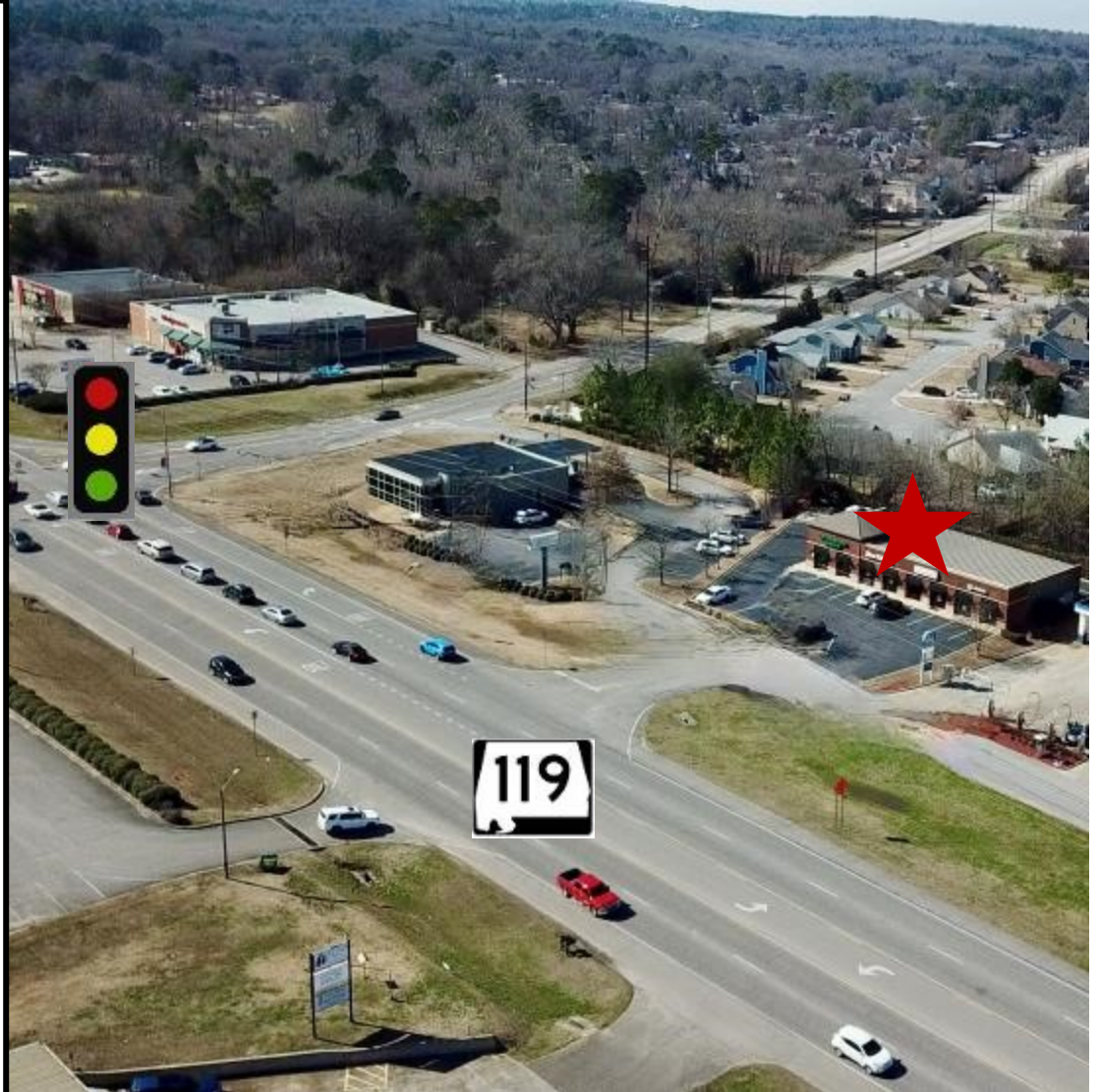


\*All Information furnished regarding property sale, rental, or financing is from sources deemed reliable, but is not guaranteed.

# PROPERTY DETAILS

37 Buck Creek Plaza Suite 400 ♦ Alabaster, AL ♦ 35007 ♦ Shelby County

- ♦ Beautiful center constructed 2003.
- ♦ Renovated 2023.
- ♦ Professionally and locally Owned and Managed
- ♦ Ideal for retail, office, medical.
- ♦ Abundant parking.
- ♦ Excellent high visibility frontage on Highway 119.
- ♦ Fantastic accessibility with access from 119, Kent Dairy Road and Buck Creek Plaza.
- ♦ Across the street from Publix, Walgreens, Wendy's, Starbucks and other local and corporate brands.
- ♦ 2.6 miles from I-65, Exit 238, off Highway 119.
- ♦ Zoned B-2 General Business, City of Alabaster.
- ♦ Strong Demographics.
- ♦ High Traffic. Near major commercial outlets, award winning schools and residential developments.
- ♦ Please call for more information or showing.



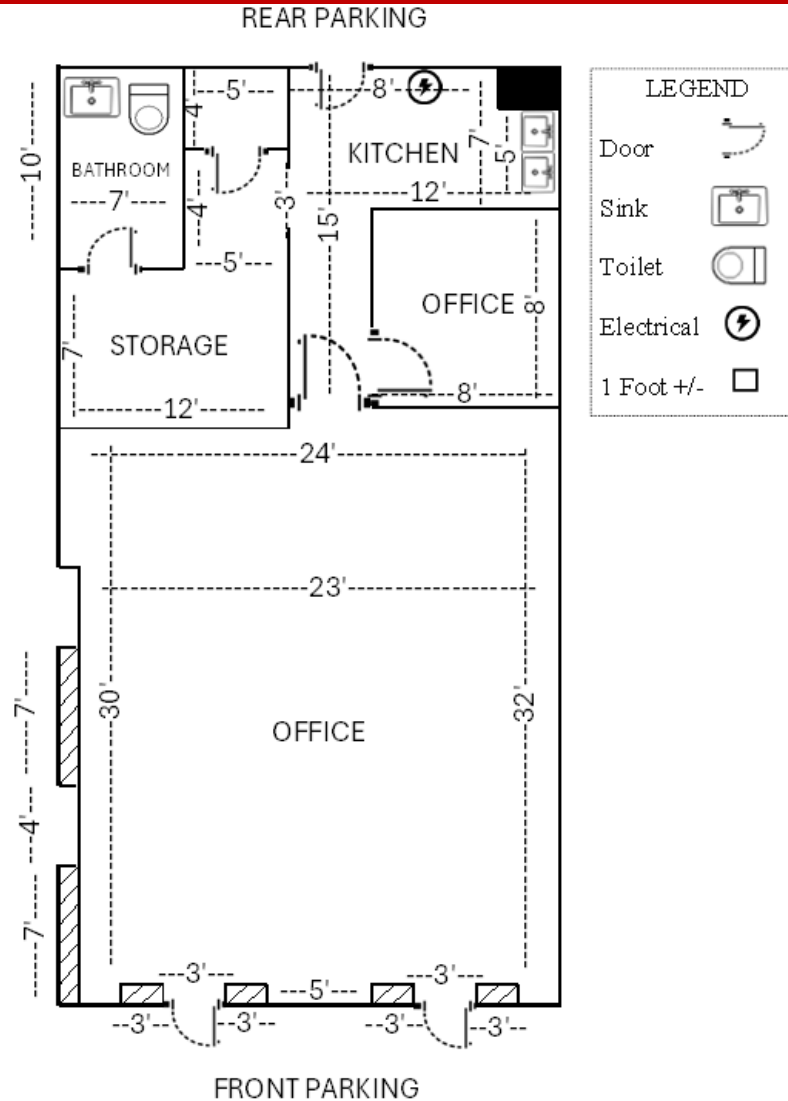
# INTERIOR PHOTOS

37 Buck Creek Plaza Suite 400 ♦ Alabaster, AL ♦ 35007 ♦ Shelby County



# FLOOR PLAN

37 Buck Creek Plaza Suite 400 ♦ Alabaster, AL ♦ 35007 ♦ Shelby County



# BIRDS EYE VIEW LOOKING NORTH

37 Buck Creek Plaza Suite 400 ♦ Alabaster, AL ♦ 35007 ♦ Shelby County



# BIRDS EYE VIEW LOOKING SOUTH

37 Buck Creek Plaza Suite 400 ♦ Alabaster, AL ♦ 35007 ♦ Shelby County



# BIRDS EYE VIEW

37 Buck Creek Plaza Suite 400 ♦ Alabaster, AL ♦ 35007 ♦ Shelby County



MARK DINAN  
Commercial & Investment Real Estate

205-980-3434

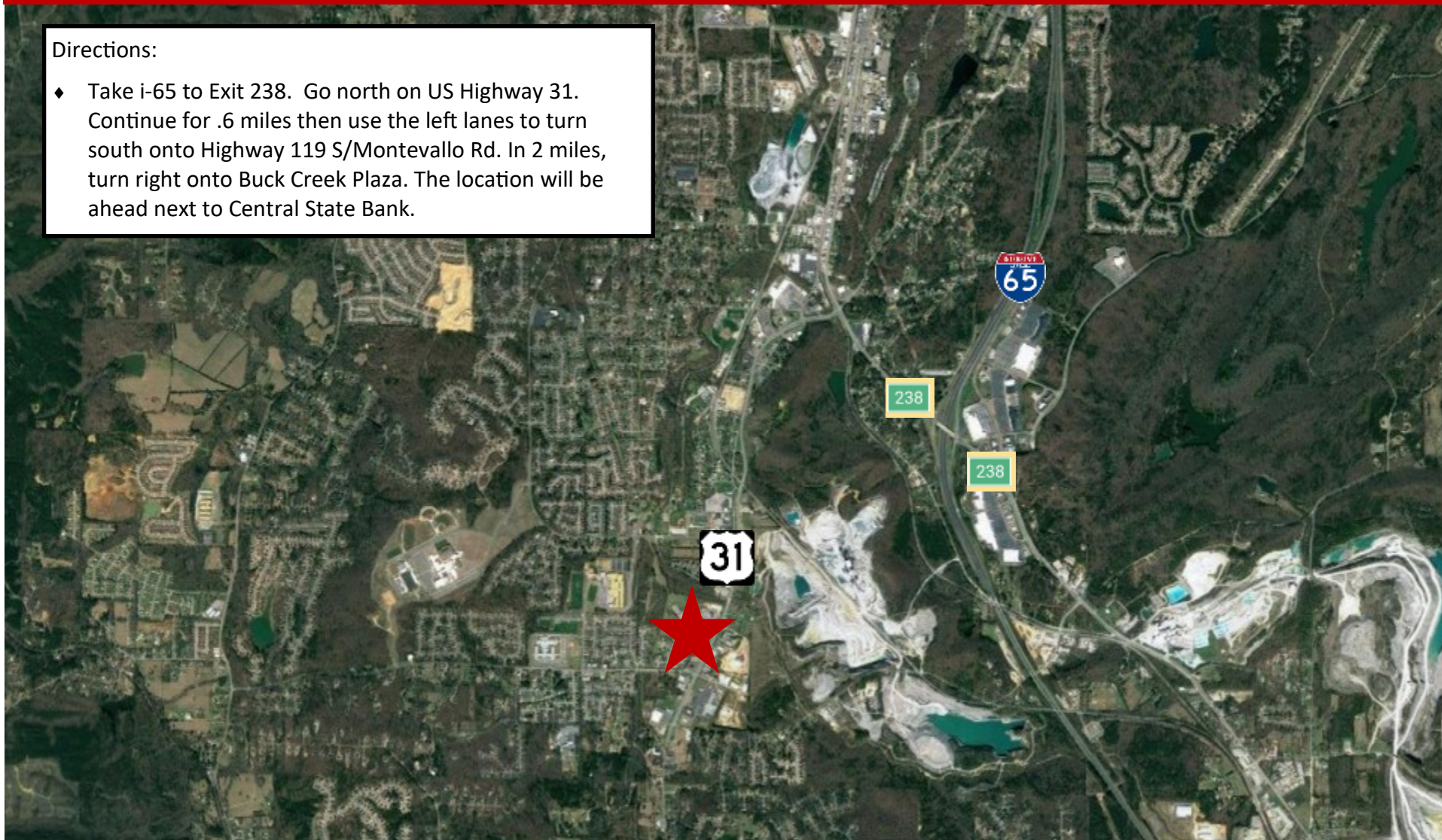
\*All Information furnished regarding property sale, rental, or financing is from sources deemed reliable, but is not guaranteed.

# LOCATION MAP

37 Buck Creek Plaza Suite 400 ♦ Alabaster, AL ♦ 35007 ♦ Shelby County

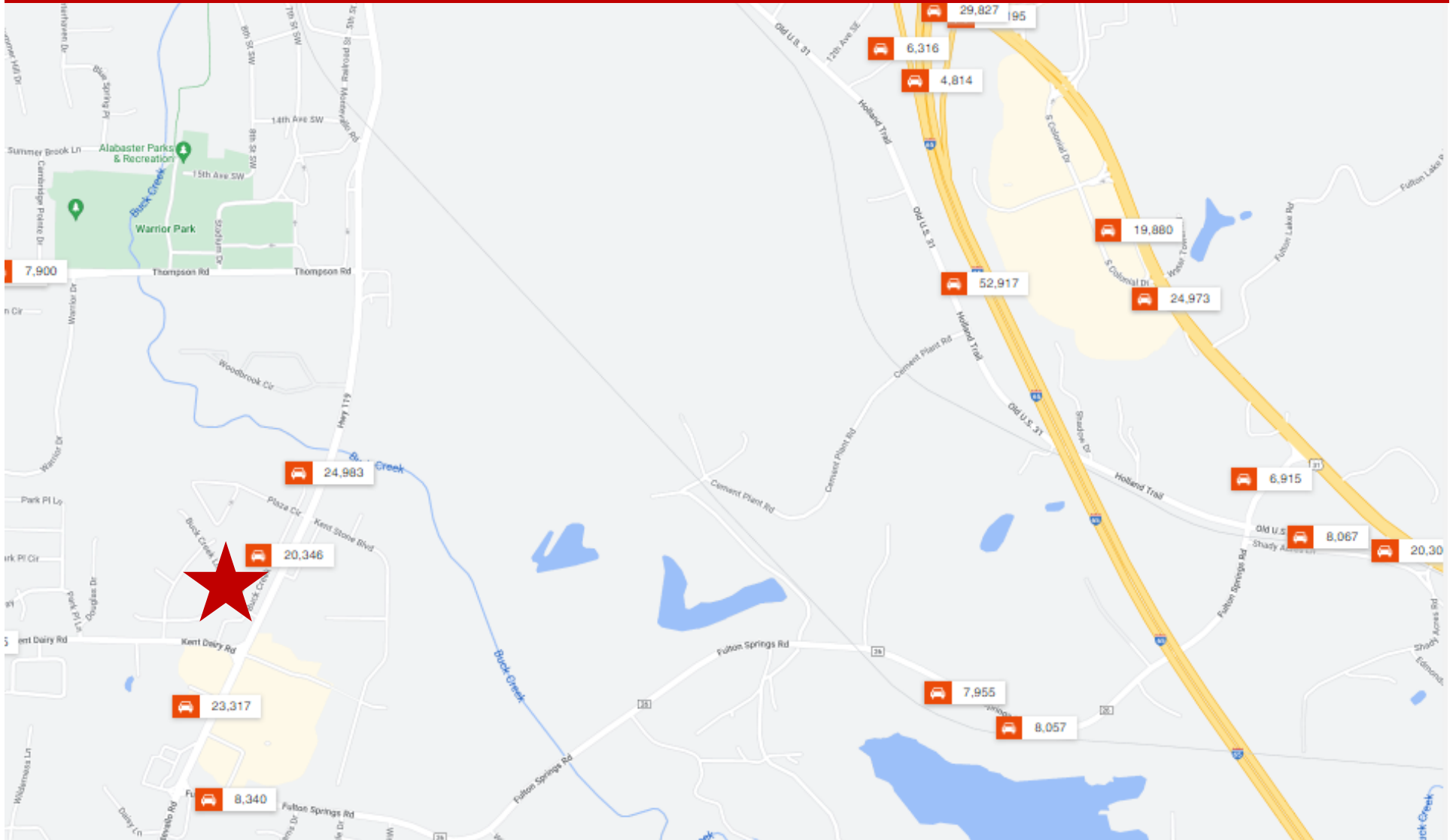
## Directions:

- ♦ Take i-65 to Exit 238. Go north on US Highway 31. Continue for .6 miles then use the left lanes to turn south onto Highway 119 S/Montevallo Rd. In 2 miles, turn right onto Buck Creek Plaza. The location will be ahead next to Central State Bank.



# TRAFFIC COUNTS

37 Buck Creek Plaza Suite 400 ♦ Alabaster, AL ♦ 35007 ♦ Shelby County



# DEMOGRAPHICS

37 Buck Creek Plaza Suite 400 ♦ Alabaster, AL ♦ 35007 ♦ Shelby County

## DEMOGRAPHIC SUMMARY

37 Buck Creek Plz, Alabaster, Alabama, 35007

Ring of 5 miles

### KEY FACTS

57,065

Population



21,034

Households

38.4

Median Age

\$69,349

Median Disposable Income

### EDUCATION

4.6%

No High School Diploma



24.6%

High School Graduate



27.9%

Some College/  
Associate's Degree



42.9%

Bachelor's/Grad/  
Prof Degree

### INCOME



\$86,532

Median Household Income



\$40,498

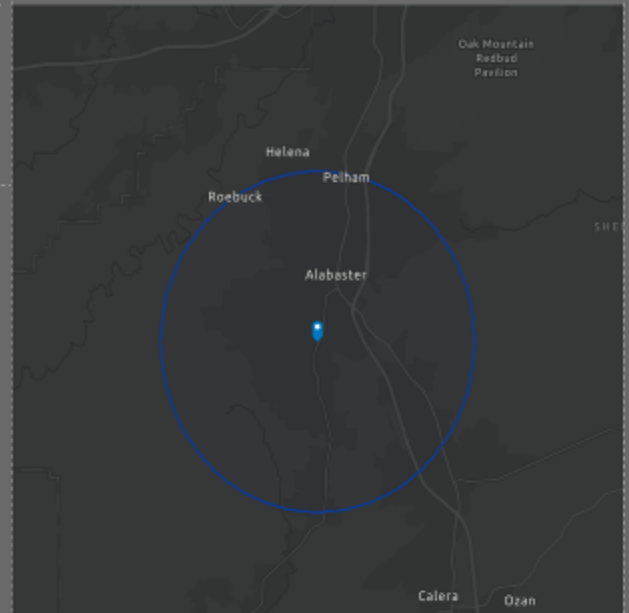
Per Capita Income



\$315,021

Median Net Worth

### HOUSEHOLD INCOME



### EMPLOYMENT



White Collar

71.0%



Blue Collar

17.4%



Services

12.6%

3.7%

Unemployment Rate

Source: This infographic contains data provided by Esri (2025, 2030). © 2026 Esri