

Land Available For Development

0 W Association Drive
Appleton, WI 54914



OFFERING SUMMARY

Sale Price: **\$219,000**

Lot Size: **1.6 Acres**

Discover an exceptional opportunity to own commercial land in one of Appleton's most desirable business corridors in the heart of the Fox Valley. Located on Association Drive, this parcel is perfectly positioned for retail, office, service, mixed-use development, or assisted living. This prime site offers easy access to Interstate 41, just minutes away. The interstate sees an average daily traffic count of 61,600 vehicles, ensuring strong exposure and connectivity.

With its ideal setting, strong demographics, and surrounding amenities, this parcel presents promising investment potential for developers or owner-users seeking a highly assessable location in the thriving Appleton market.

Some potential uses could be:

****Please verify with the City of Appleton that your specific use is permissible****

- Assisted living, skilled nursing facility
- Daycare (Adult or Child)
- Hotel
- Medical office, clinic, healthcare facility
- School, college, university
- Mixed-Use
- Recreation center, non-profit
- Place of worship
- Office
- Studio
- Restaurant, Fast Food
- Veterinarian clinic
- Automotive maintenance shop
- Retail
- Parking lot

Nearby businesses are Fox River Mall, Appleton Airport, Fox Valley Technical College, Fox Cities Performing Arts Center, Department of Motor Vehicles, Wisconsin Timber Rattlers Baseball Club

Parcel Highlights



REALTY GROUP eXpCOMMERCIAL



- Zoned C2 - General Commercial for versatile uses
- Level landscape
- Utilities at the street
- Ideal location in the heart of Fox Valley
- Close to services, retail, and restaurants
- Promising investment potential
- Within a mile of 7 city parks
- Easy access to Interstate 41 which has an average daily traffic count of 61,600 vehicles
- Interstate 41 runs North/South providing convenient travel up to Green Bay and down to Oshkosh, Fond Du Lac, and Milwaukee
- 15 minutes from Appleton International Airport

Dawn Davis
+1 920 309 1295
www.3DRealtyGroup.com
dawn@3drealtygroup.com

Property Photo



REALTY GROUP eXpCOMMERCIAL

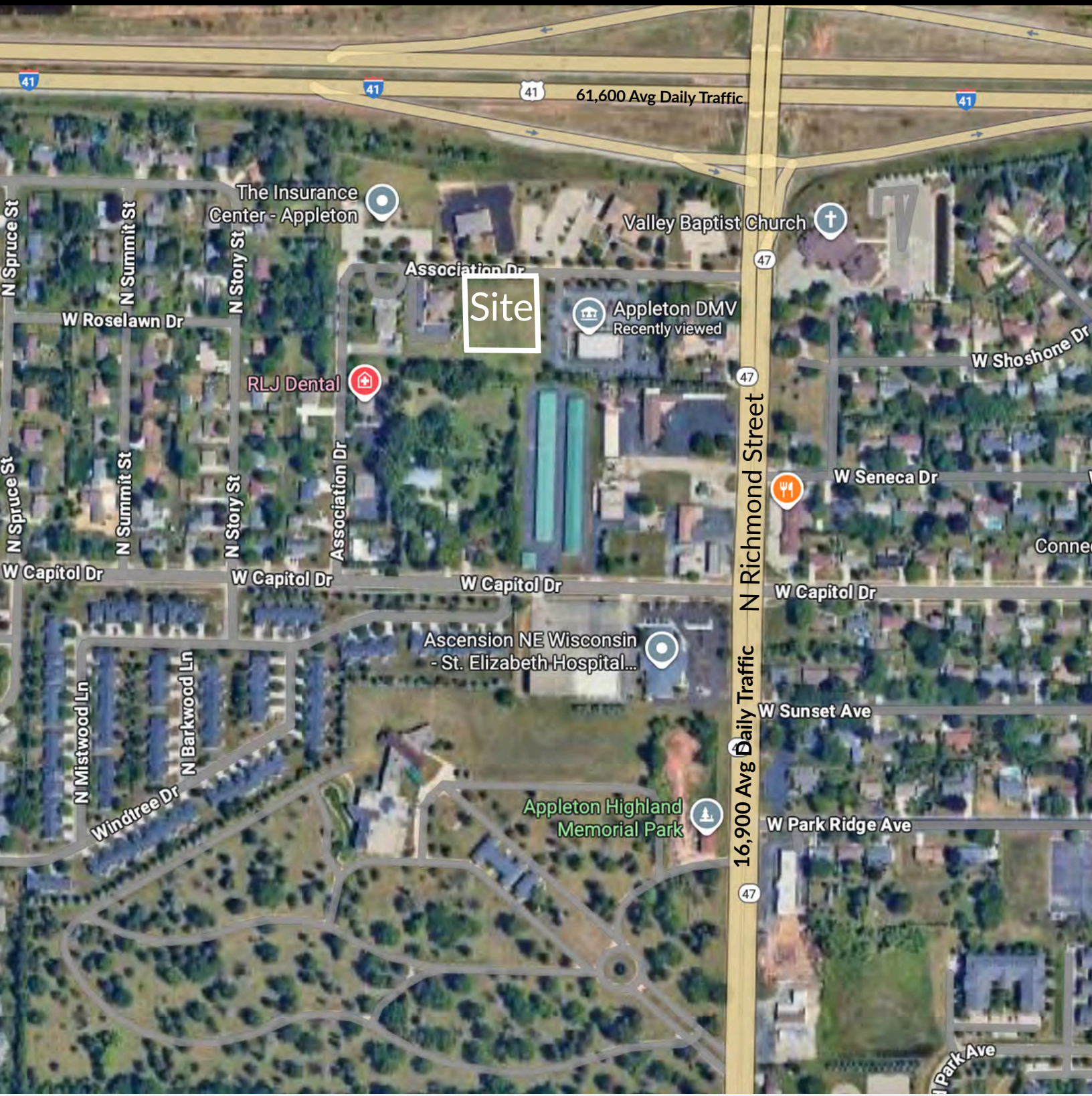


Dawn Davis
+1 920 309 1295
www.3DRealtyGroup.com
dawn@3drealtygroup.com

Aerial View



REALTY GROUP xpCOMMERCIAL



Dawn Davis

+1 920 309 1295

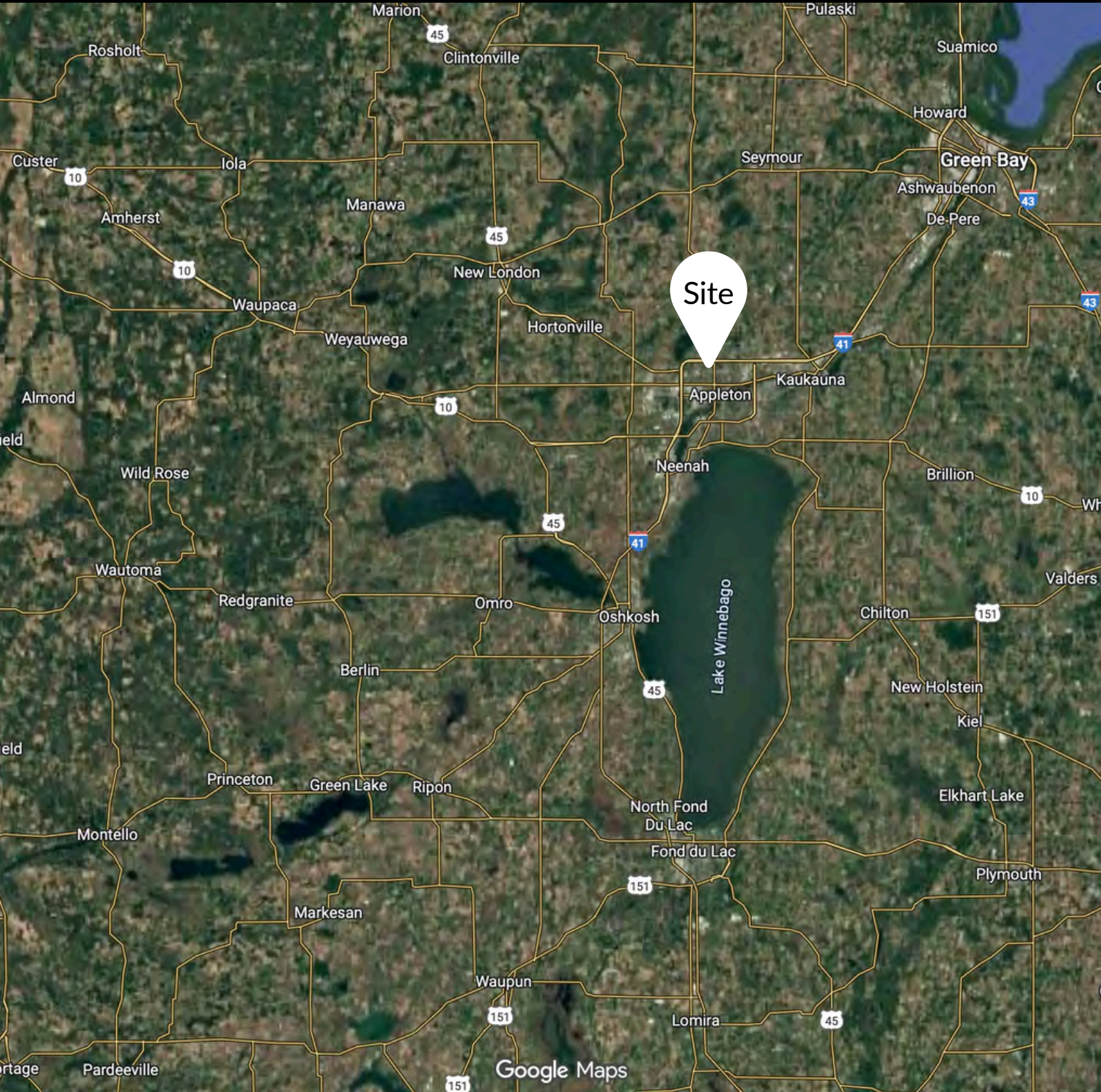
www.3DRealtyGroup.com

dawn@3drealtygroup.com

Regional View



REALTY GROUP **XP**COMMERCIAL



Dawn Davis

+1 920 309 1295

www.3DRealtyGroup.com

dawn@3drealtygroup.com

Retailer Map



REALTY GROUP xpCOMMERCIAL



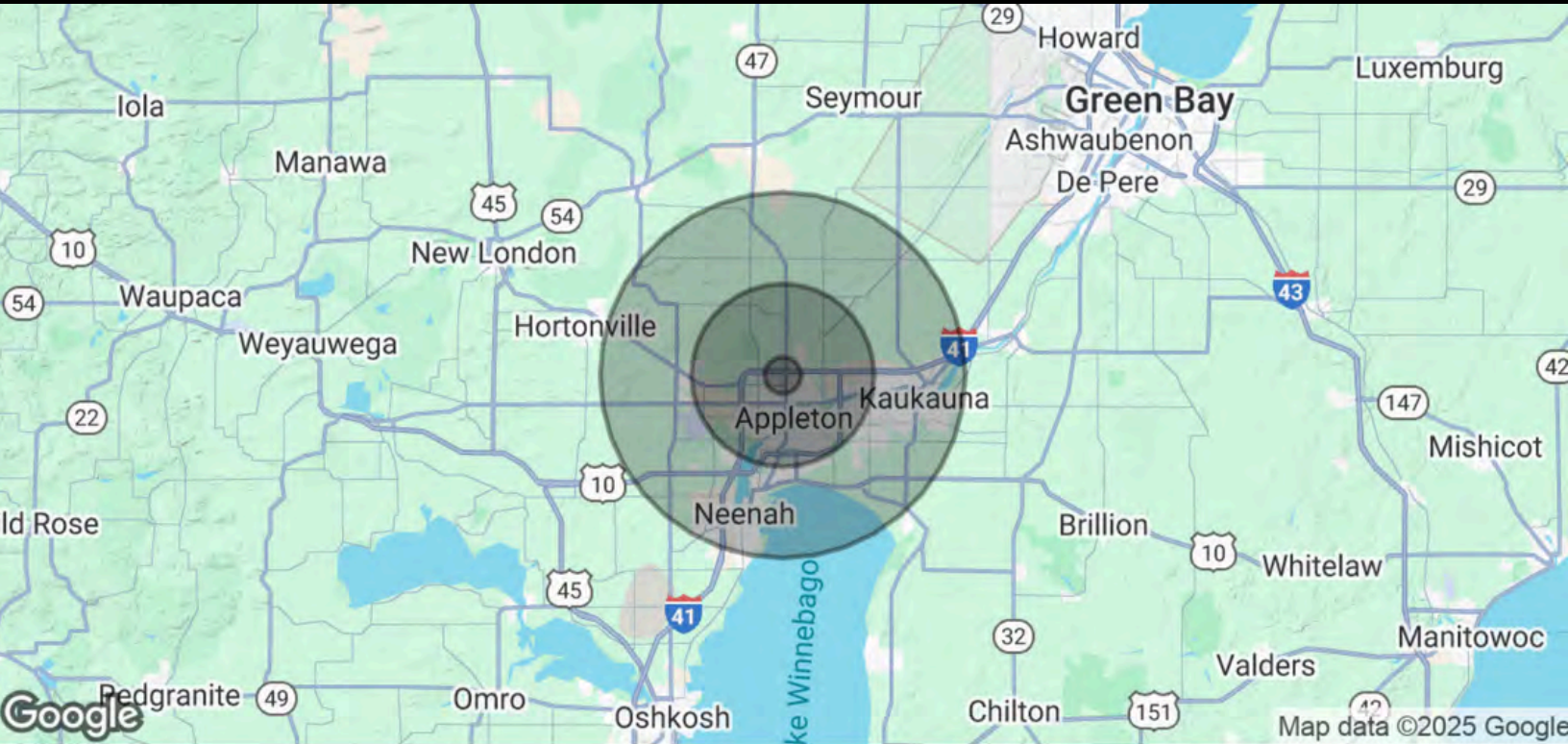
Map data ©2025 Imagery ©2025 Airbus, Landsat / Copernicus, Maxar Technologies

Dawn Davis
+1 920 309 1295
www.3DRealtyGroup.com
dawn@3drealtygroup.com

Demographics Map & Report



REALTY GROUP eXpCOMMERCIAL



POPULATION	1 MILE	5 MILES	10 MILES
Total Population	9,027	121,384	232,860
Average Age	44	40	40
Average Age (Male)	42	39	39
Average Age (Female)	46	41	41

HOUSEHOLDS & INCOME	1 MILE	5 MILES	10 MILES
Total Households	3,974	50,882	95,004
# of Persons per HH	2.3	2.4	2.5
Average HH Income	\$117,734	\$97,882	\$103,908
Average House Value	\$297,558	\$287,857	\$297,165

Demographics data derived from [AlphaMap](#)

Dawn Davis
 +1 920 309 1295
www.3DRealtyGroup.com
dawn@3drealtygroup.com

DISCLOSURE TO NON-RESIDENTIAL CUSTOMERS

1 Prior to negotiating on your behalf the brokerage firm, or an agent associated with the firm, must provide you the
2 following disclosure statement:

3 **DISCLOSURE TO CUSTOMERS** You are a customer of the brokerage firm (hereinafter Firm). The Firm is either an agent
4 of another party in the transaction or a subagent of another firm that is the agent of another party in the transaction. A
5 broker or a salesperson acting on behalf of the Firm may provide brokerage services to you. Whenever the Firm is
6 providing brokerage services to you, the Firm and its brokers and salespersons (hereinafter Agents) owe you, the
7 customer, the following duties:

- 8 (a) The duty to provide brokerage services to you fairly and honestly.
- 9 (b) The duty to exercise reasonable skill and care in providing brokerage services to you.
- 10 (c) The duty to provide you with accurate information about market conditions within a reasonable time if you request
11 it, unless disclosure of the information is prohibited by law.
- 12 (d) The duty to disclose to you in writing certain Material Adverse Facts about a property, unless disclosure of the
13 information is prohibited by law (see lines 42-51).
- 14 (e) The duty to protect your confidentiality. Unless the law requires it, the Firm and its Agents will not disclose your
15 confidential information or the confidential information of other parties (see lines 23-41).
- 16 (f) The duty to safeguard trust funds and other property held by the Firm or its Agents.
- 17 (g) The duty, when negotiating, to present contract proposals in an objective and unbiased manner and disclose the
18 advantages and disadvantages of the proposals.

19 Please review this information carefully. An Agent of the Firm can answer your questions about brokerage services,
20 but if you need legal advice, tax advice, or a professional home inspection, contact an attorney, tax advisor, or home
21 inspector. This disclosure is required by section 452.135 of the Wisconsin statutes and is for information only. It is a
22 plain-language summary of the duties owed to a customer under section 452.133(1) of the Wisconsin statutes.

23 **CONFIDENTIALITY NOTICE TO CUSTOMERS** The Firm and its Agents will keep confidential any information given to the
24 Firm or its Agents in confidence, or any information obtained by the Firm and its Agents that a reasonable person
25 would want to be kept confidential, unless the information must be disclosed by law or you authorize the Firm to
26 disclose particular information. The Firm and its Agents shall continue to keep the information confidential after the
27 Firm is no longer providing brokerage services to you.

- 28 The following information is required to be disclosed by law:
- 29 1. Material Adverse Facts, as defined in Wis. Stat. § 452.01(5g) (see lines 42-51).
 - 30 2. Any facts known by the Firm or its Agents that contradict any information included in a written inspection
31 report on the property or real estate that is the subject of the transaction.
- 32 To ensure that the Firm and its Agents are aware of what specific information you consider confidential, you may
33 list that information below (see lines 35-41) or provide that information to the Firm or its Agents by other means. At a
34 later time, you may also provide the Firm or its Agents with other information you consider to be confidential.

35 **CONFIDENTIAL INFORMATION:** _____
36 _____
37 _____

38 **NON-CONFIDENTIAL INFORMATION** (the following information may be disclosed by the Firm and its Agents): _____
39 _____
40 _____

41 _____ (Insert information you authorize to be disclosed, such as financial qualification information.)

42 **DEFINITION OF MATERIAL ADVERSE FACTS**
43 A "Material Adverse Fact" is defined in Wis. Stat. § 452.01(5g) as an Adverse Fact that a party indicates is of such
44 significance, or that is generally recognized by a competent licensee as being of such significance to a reasonable
45 party, that it affects or would affect the party's decision to enter into a contract or agreement concerning a transaction
46 or affects or would affect the party's decision about the terms of such a contract or agreement.

47 An "Adverse Fact" is defined in Wis. Stat. § 452.01(1e) as a condition or occurrence that a competent licensee
48 generally recognizes will significantly and adversely affect the value of the property, significantly reduce the structural
49 integrity of improvements to real estate, or present a significant health risk to occupants of the property; or information
50 that indicates that a party to a transaction is not able to or does not intend to meet his or her obligations under a
51 contract or agreement made concerning the transaction.

52 **NOTICE ABOUT SEX OFFENDER REGISTRY** You may obtain information about the sex offender registry and persons
53 registered with the registry by contacting the Wisconsin Department of Corrections on the Internet at
54 <http://www.doc.wi.gov> or by telephone at 608-240-5830.

No representation is made as to the legal validity of any provision or the adequacy of any provision in any specific transaction.
Copyright © 2016 by Wisconsin REALTORS® Association Drafted by Attorney Debra Peterson Conrad