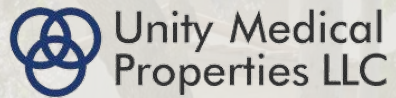




CBRE



Unity Medical
Properties LLC



521 | E. ELDER ST.
FALLBROOK, CA 92028



MEDICAL OFFICE SUITES FOR LEASE



521 | E. ELDER ST.
FALLBROOK, CA 92028

Project Features



Class "A" Medical
Office Project



1,935 SF - 2,931 SF
Available



Move-in Ready



Close to 15 and 76
Freeways



Efficient
Floor Plans



Tenant mix includes: Family
Practice, Lab, Ophthalmology,
Physical Therapy, Dentistry

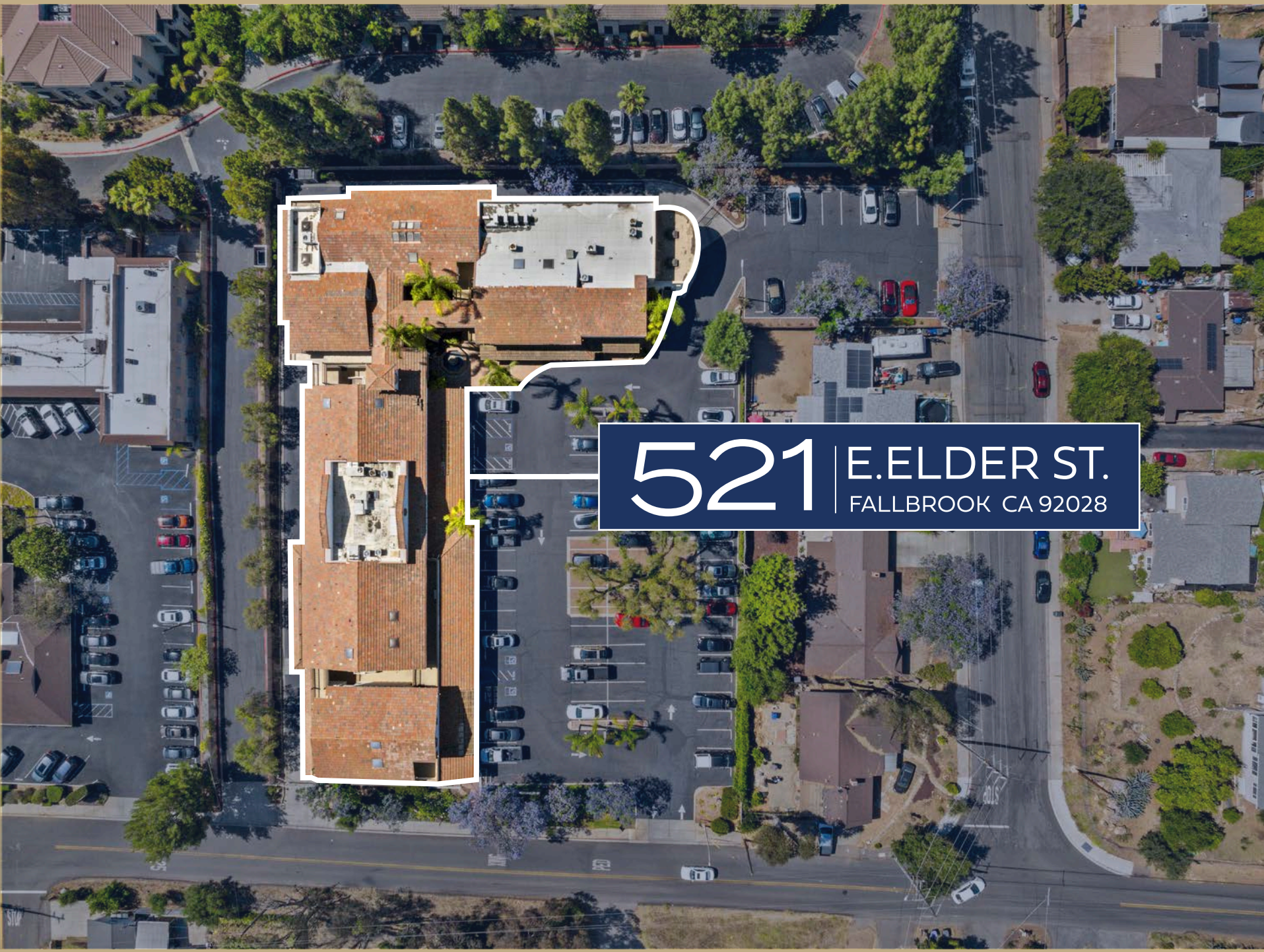
Availability

SUITE	SF	RATE	FLOOR PLAN
101	2,931 SF	Negotiable	VIEW PLAN
202	1,935 SF	Negotiable	VIEW PLAN



Aerial Overview





521 | E. ELDER ST.
FALLBROOK CA 92028

FLOOR PLAN

Suite 101

2,931 RSF

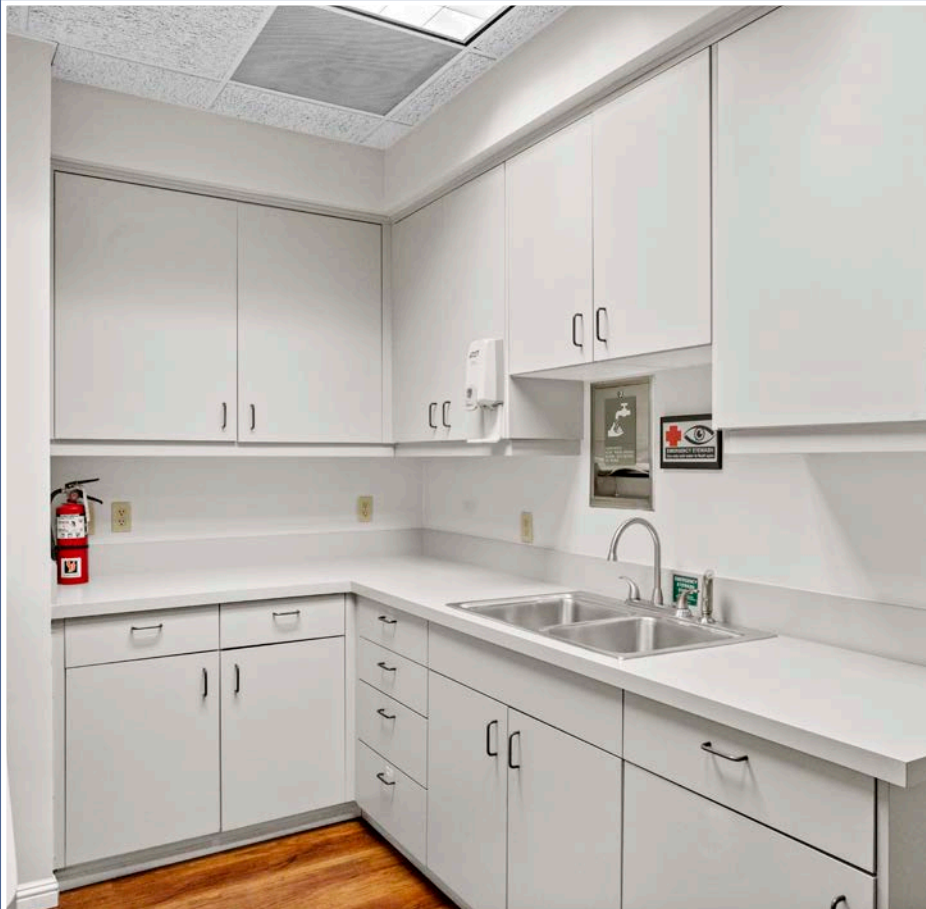
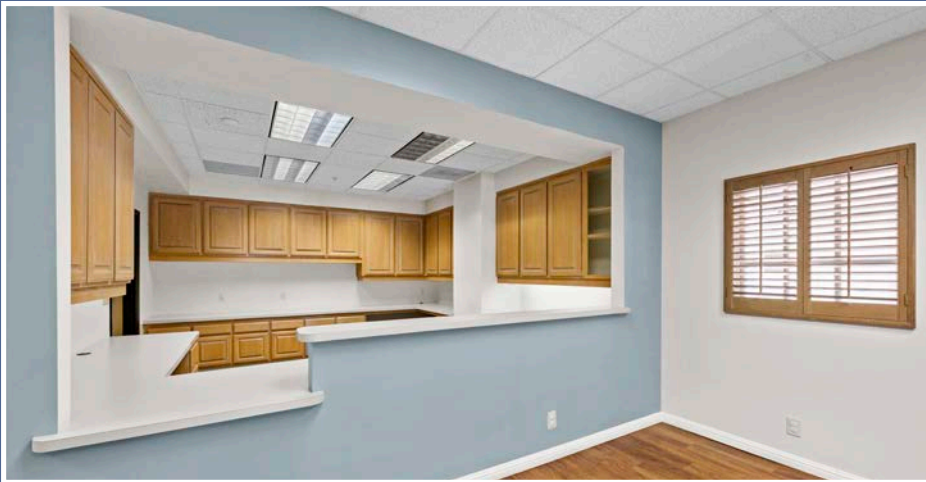


VIEW VIRTUAL
FLOOR PLAN



BACK TO
AVAILABILITIES

SUITE 101



Suite 202

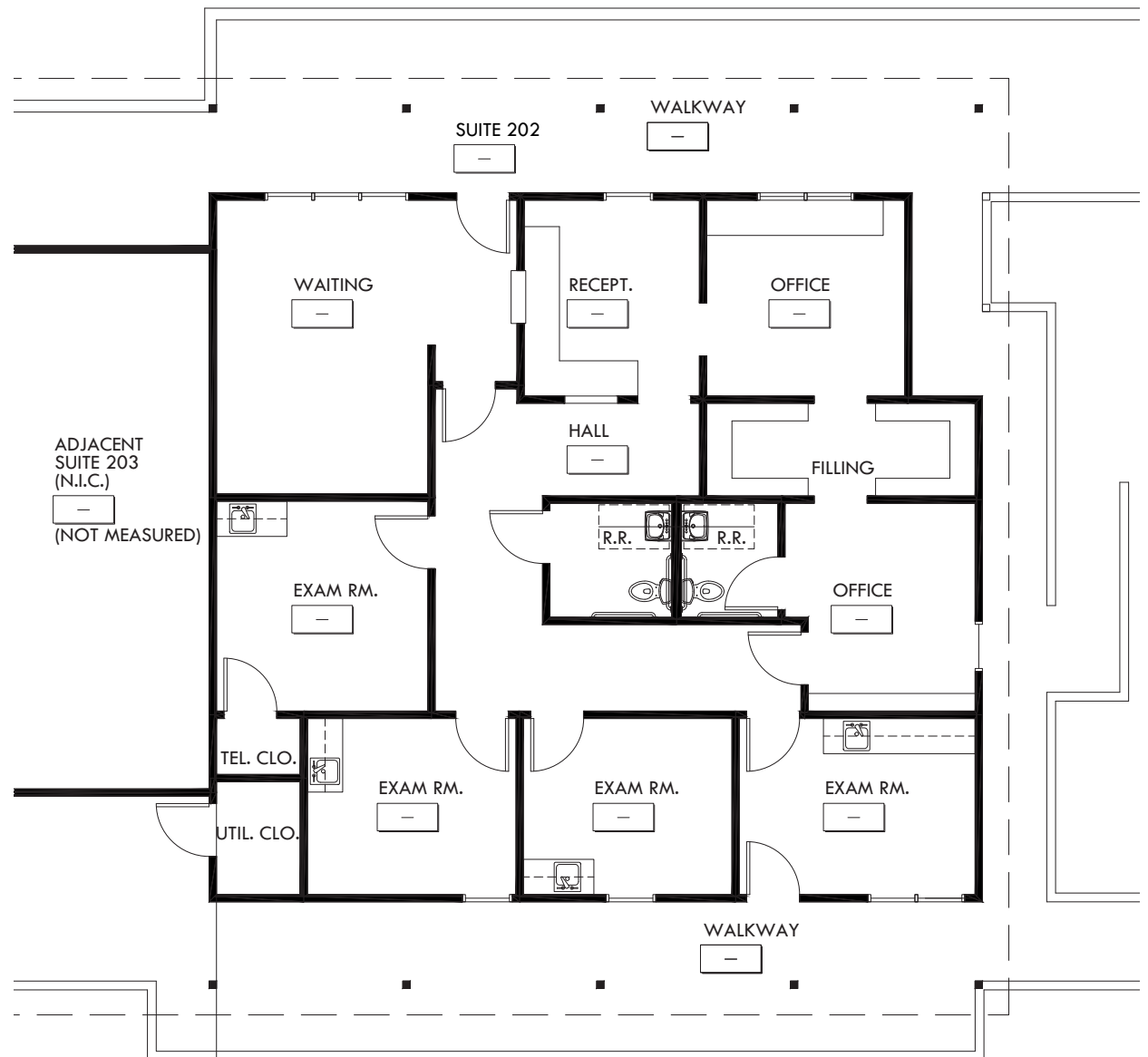
1,935 RSF



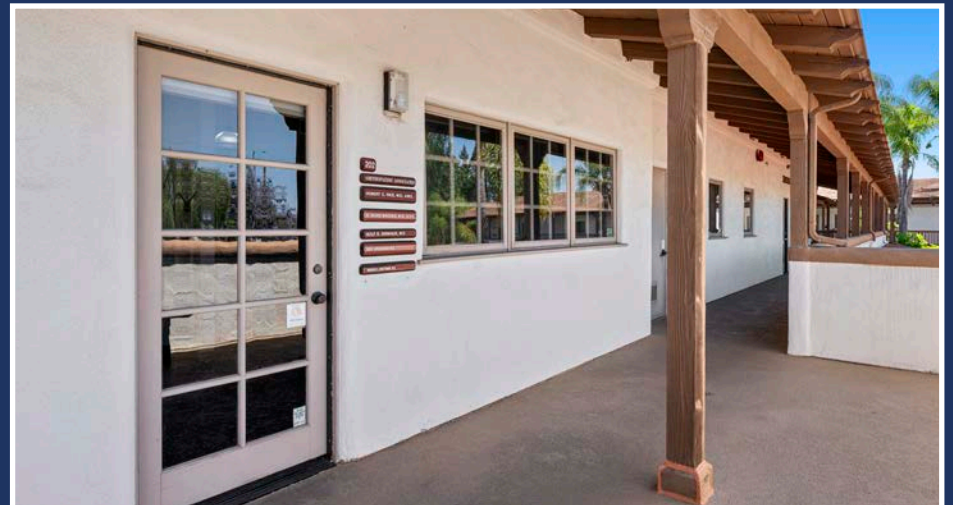
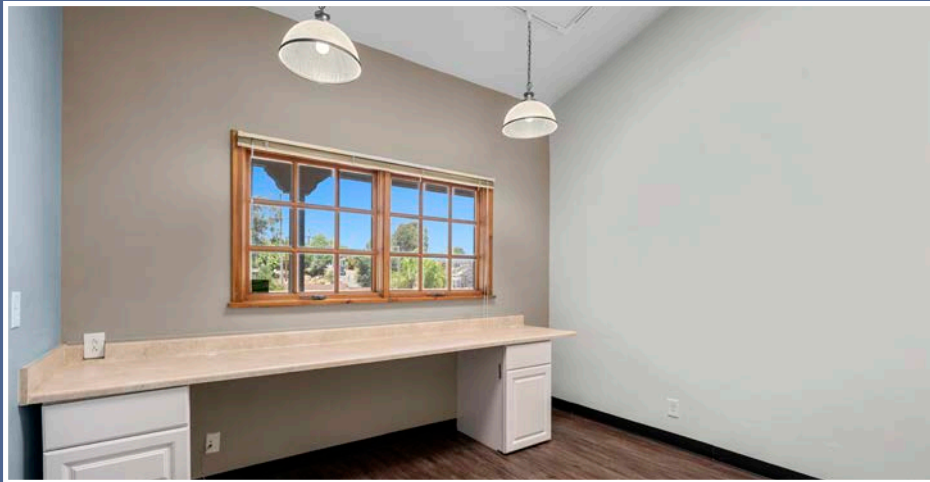
VIEW VIRTUAL
FLOOR PLAN



BACK TO
AVAILABILITIES



SUITE 202



521 | E. ELDER ST.
FALLBROOK CA 92028



MEDICAL OFFICE SUITES FOR LEASE

Dan Henry
Vice President

Lic. 02035998
+1 760 438 8569
dan.henry@cbre.com

Lars Eisenhauer
Senior Vice President

Lic. 01372911
+1 760 438 8534
lars.eisenhauer@cbre.com

CBRE
5780 Fleet Street, Suite 100
Carlsbad, CA 92008
www.cbre.com/sandiego

© 2026 CBRE, Inc. All rights reserved. This information has been obtained from sources believed reliable but has not been verified for accuracy or completeness. CBRE, Inc. makes no guarantee, representation or warranty and accepts no responsibility or liability as to the accuracy, completeness, or reliability of the information contained herein. You should conduct a careful, independent investigation of the property and verify all information. Any reliance on this information is solely at your own risk. CBRE and the CBRE logo are service marks of CBRE, Inc. All other marks displayed on this document are the property of their respective owners, and the use of such marks does not imply any affiliation with or endorsement of CBRE. Photos herein are the property of their respective owners. Use of these images without the express written consent of the owner is prohibited.



CBRE