

FOR LEASE

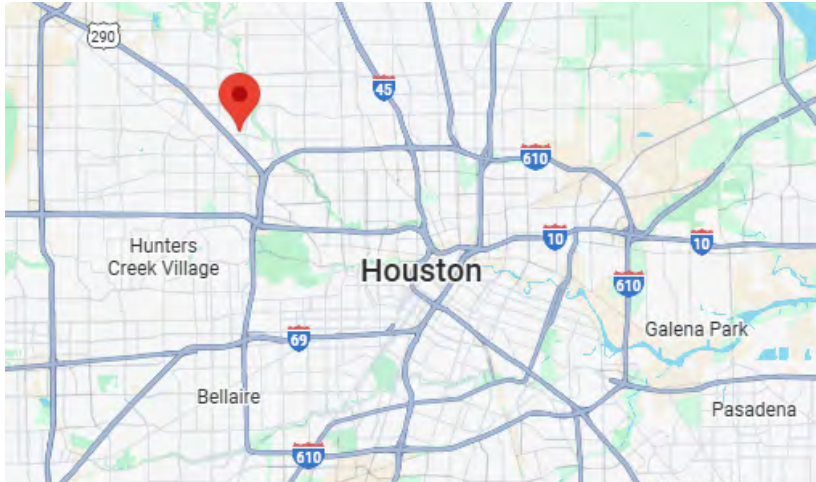
MILWEE BUSINESS Park
4901 Milwee St., Suite 209
Houston, TX 77092



**Click Here
for
Virtual Tour**

FOR LEASE

MILWEE BUSINESS Park
4901 Milwee St., Suite 209
Houston, TX 77092



Property Size:

- 2,500 SF Total
- 839 SF Office

Property Features:

- Master Planned Business Park
- (1) Grade Level Door
- 10' Clear Height
- Security Lighting
- All Concrete Paving
- Fully Fenced with Security Gate

Property Location:

- Easy Access to I-10, 610 Loop + 290

Leasing By:



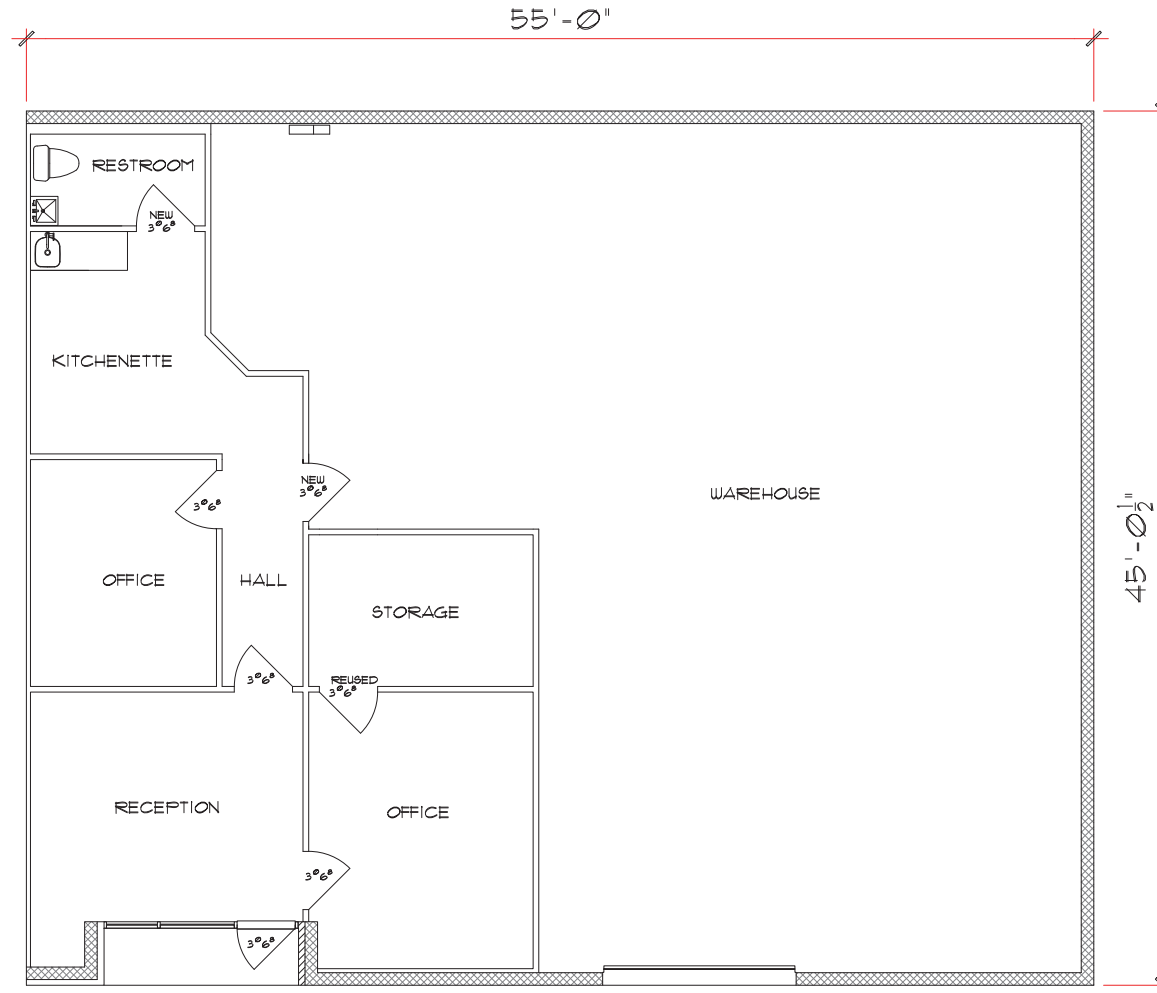
J.D. Dieckman
Hanson Bane
(713) 589-3353

Owned + Managed by:



FOR LEASE

MILWEE BUSINESS Park
4901 Milwee St., Suite 209
Houston, TX 77092



2,477# (2,500#) FLEX SPACE
1,609# OF WAREHOUSE SPACE &
839# OF AIR CONDITIONED SPACE
WITH UPGRADED LANDLORD IMPROVEMENTS
29# EXTERIOR ENTRYWAY