



2106 Route 35, Sea Girt, New Jersey

(Possible Shadow Anchor to Sea Girt Square)

Availability

- +/- 2.58 Acres or Up to +/- 25,000 SF

Opportunity

- For Sale or Lease

Zoning: HB-80

- Medical
- Office
- Retail

Traffic Count

- 23,072 VPD

Strong Retail Synergy



Demographics

Radius	Population	Daytime Population	Median HH Income
1 Mile	5,655	7,264	\$102,889
3 Mile	47,057	47,539	\$119,632
5 Mile	121,757	112,367	\$107,587

Retail For Sale or Lease - Contact

Neil Ruppert
 Ph. 732-743-9938
 neil@piersonre.com

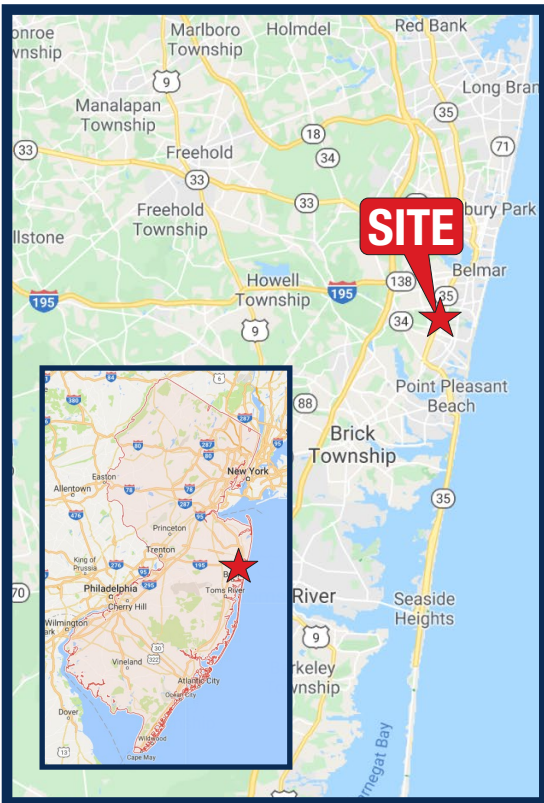
PIERSON
 COMMERCIAL REAL ESTATE®

2106 Route 35, Sea Girt, New Jersey (Possible Shadow Anchor to Sea Girt Square)

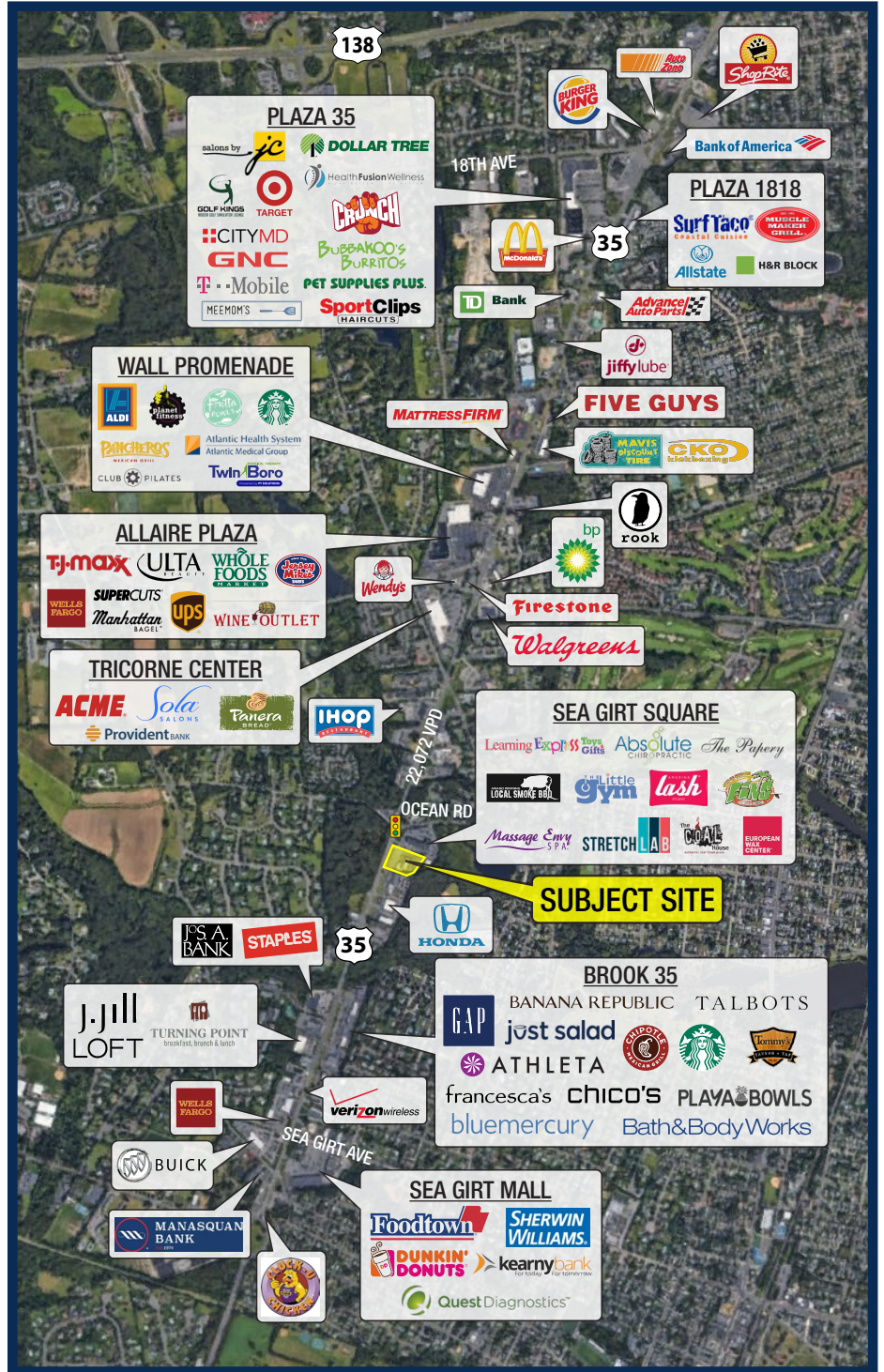
Site Description

- Subject site is well-positioned along a primary retail corridor at the signalized intersection of Route 35 and Ocean Road
- Rare opportunity to purchase or lease a premiere commercial property
- The property is flexible to multiple building configurations that will boast ample parking
- Landlord owns C33 Liquor License
- Surrounding population is strong year round, plus retailers in this trade area benefit from the influx of tourists and seasonal residents during the spring and summer months
- Property will also feature full access movements from Route 35, prominent pylon signage and a cross easement to Sea Girt Square, which will allow convenient access to/from the signalized intersection at Ocean Road

State Map



Market Aerial



Retail For Sale or Lease - Contact

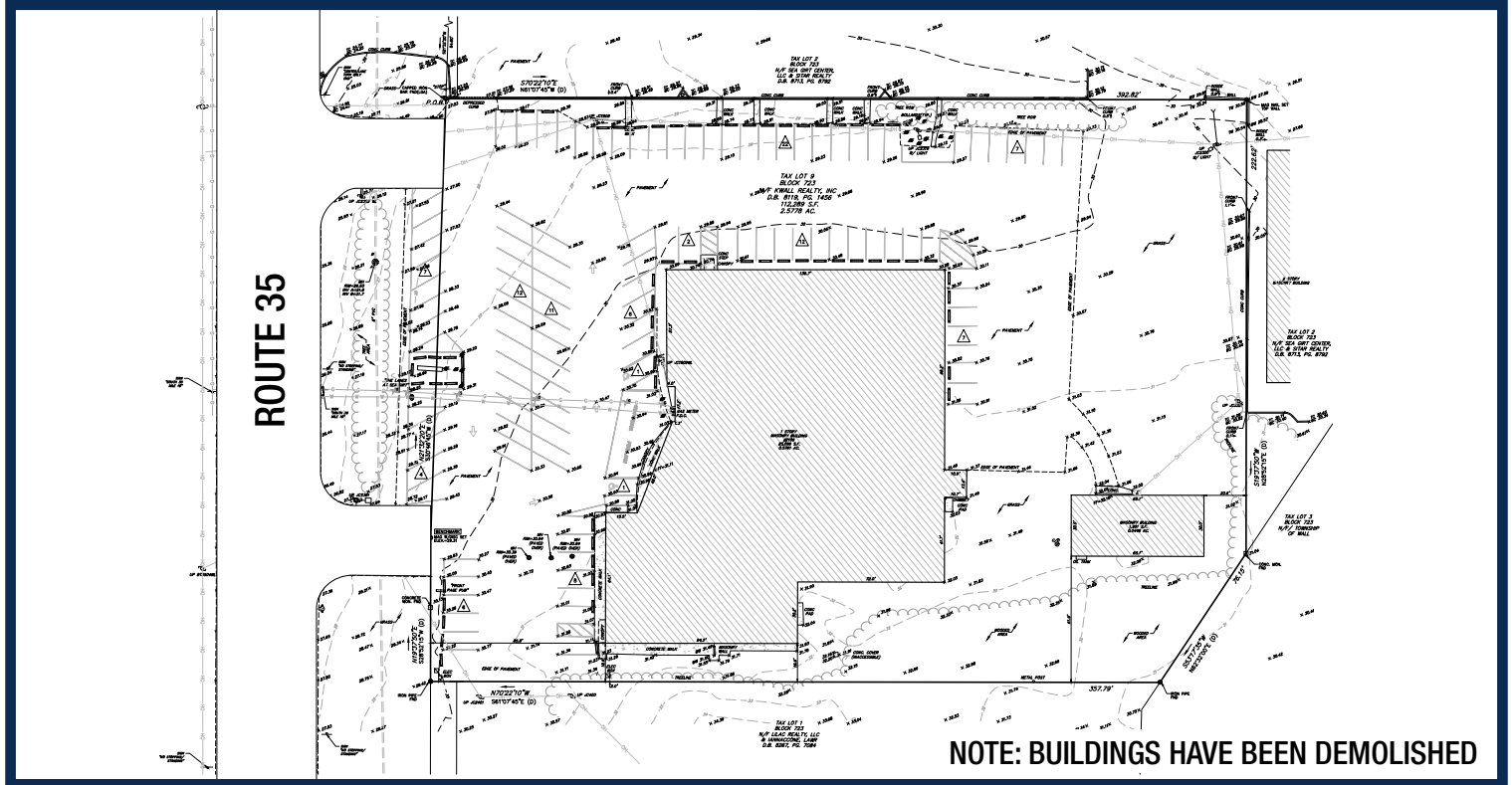
Neil Ruppert
Ph. 732-743-9938
neil@piersonre.com

PIERSON
COMMERCIAL REAL ESTATE.®

2106 Route 35, Sea Girt, New Jersey

(Possible Shadow Anchor to Sea Girt Square)

Site Survey



Retail For Sale or Lease - Contact

Neil Ruppert
Ph. 732-743-9938
neil@piersonre.com



© Pierson Commercial Real Estate LLC. This information has been obtained from sources believed reliable. We have not verified it and make no guarantee, warranty or representation about it. Any renderings, projections, opinions, assumptions or estimates used are for example only and do not represent the current or future performance of the property. You and your advisors should conduct a careful, independent investigation of the property to determine to your satisfaction the suitability of the property for your needs.