

15010 EAST JEFFERSON AVENUE

GROSSE POINTE PARK, MICHIGAN 48230

LEASE RATE: \$17.00/SQ. FT. NNN



BROOKSTONE
REALTORS



Prepared by:

LANCE SEBA

Associate Broker

Direct: 248.704.6000

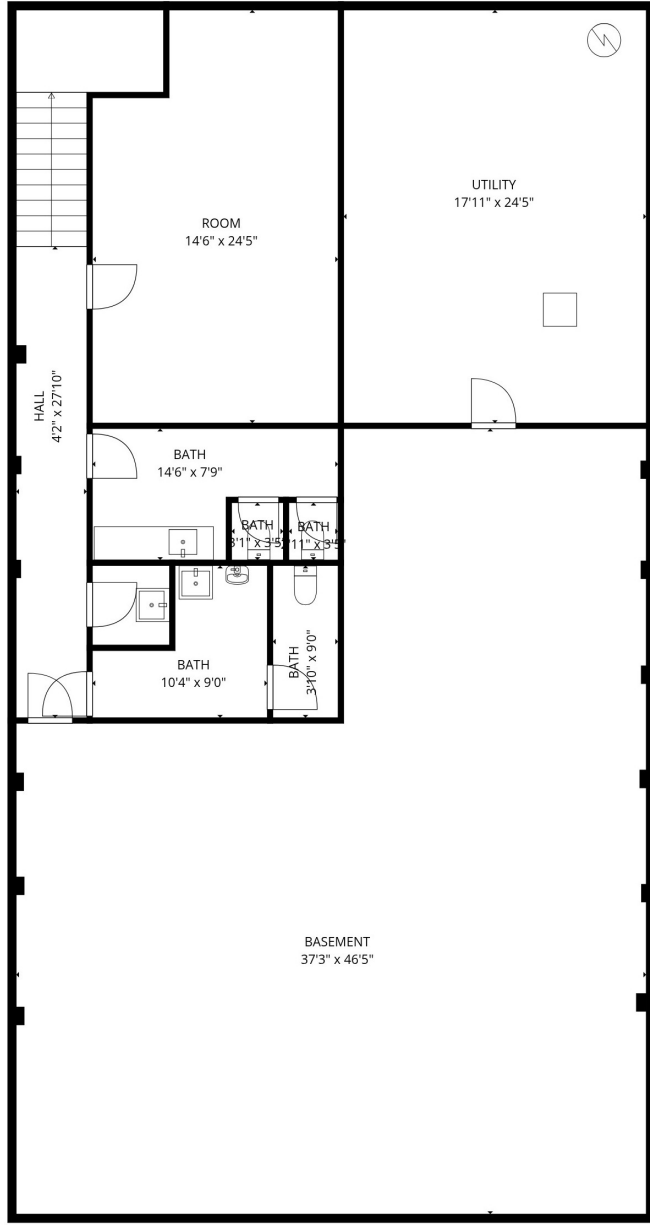
Email: Lance@Sebasells.com



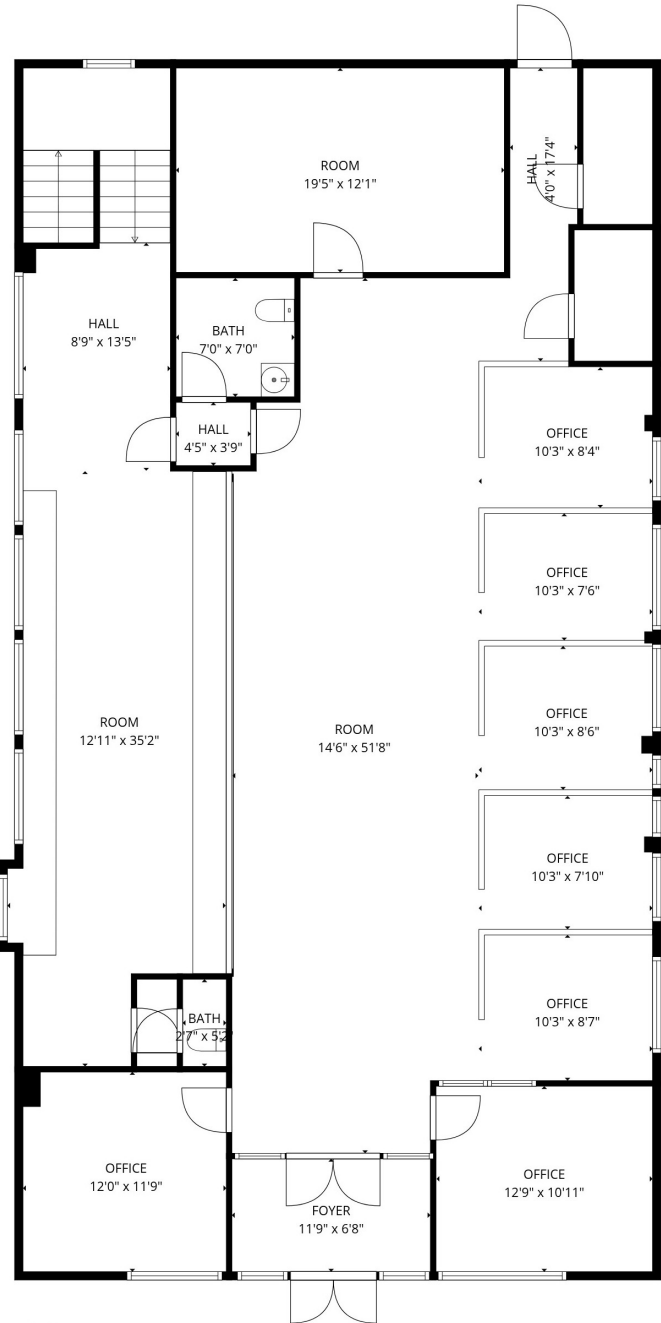
- Prime corner lease opportunity in Grosse Pointe Park.
- RC mixed-use zoning.
- Fully renovated office space in excellent condition.
- Furnished with brand-new, unused office furniture.
- Renovated and furnished but never reopened to the public.
- High-visibility location across from the Schaap Center for Performing Arts.
- Steps from the Grosse Pointe Park Municipal Building.
- The Bank of America ATM is in use, which generates traffic.
- A mortgage brokerage or financial institution is restricted for use.

DEMOGRAPHICS

Total Population	~16,000–18,000
Average income	~\$45,000–\$55,000
Households	~6,000–7,000



Basement 1



1st floor



Prepared by:
LANCE SEBA
Associate Broker

3310 W. Big Beaver Road #105 Troy, MI 48084
Direct: 248.704.6000
Email: Lance@Sebasells.com