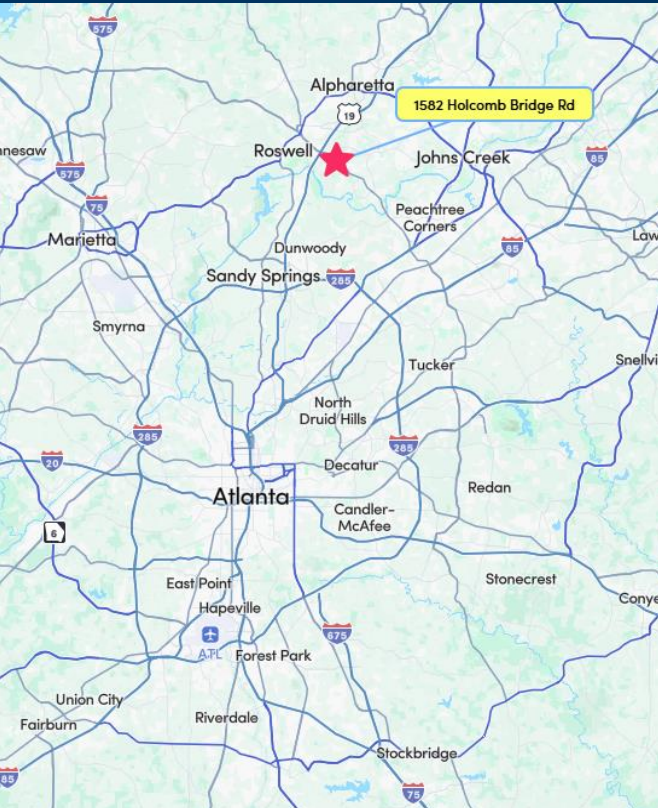


Roswell Market Center

1582 Holcomb Bridge Road,
Roswell, Georgia 30076



Leasing Contact:

Allie Hodge Motz
678-501-5342
ahodge@riverwoodproperties.com

Lexi Parks
770-955-7660
lexi@riverwoodproperties.com

riverwoodproperties.com

Property Highlights:

- Roswell Market Center is an 82,029 square foot shopping center located in Roswell, Georgia
- Features National and Regional Tenants
- Over 240,090 consumers within a 5-mile radius
- Signage available overlooking Holcomb Bridge Road
- Shadow anchored by The Home Depot
- GA DOT Traffic Counts:
 - Holcomb Bridge Rd: 57,000 AADT
- Zoned CX | Commercial Mix Use
- Retail Spaces Available | 1,200- 3,000 SF

Roswell Market Center

TENANTS

3	Suites by A	5,494
5	Regency Fine Art & Frame	2,500
6	AT&T	2,400
7	Instant Prints	2,000
8	Retail Space Available	1,500
9	Retail Space Available	1,500
10	Fine Upholstery	1,200
11	Beefsnacks USA	1,200
12	Retail Space Available	1,200
13	Atlanta Workshop Players	3,200
15	AutoZone	28,809
16	Subway	1,713
17	Red Apple Pharmacy	1,750
19	Kay Cleaners	2,500
20	Care-More Chiropractic	2,500
21	Westend Nails	4,521
21A	Retail Space Available	1,479
22	Taco Takeout	1,600
23	4 Seasons Wings	1,600
24	Dollar Tree	13,362
	GLA	82,029 SF
	Available	1,200- 3,000 SF



ROSWELL MARKET CENTER

Site Plan



AREA DEMOGRAPHICS



2024
Population

1 MILE	10,732
3 MILE	78,213
5 MILE	213,025



2024 Daytime
Population

1 MILE	9,917
3 MILE	99,000
5 MILE	240,090



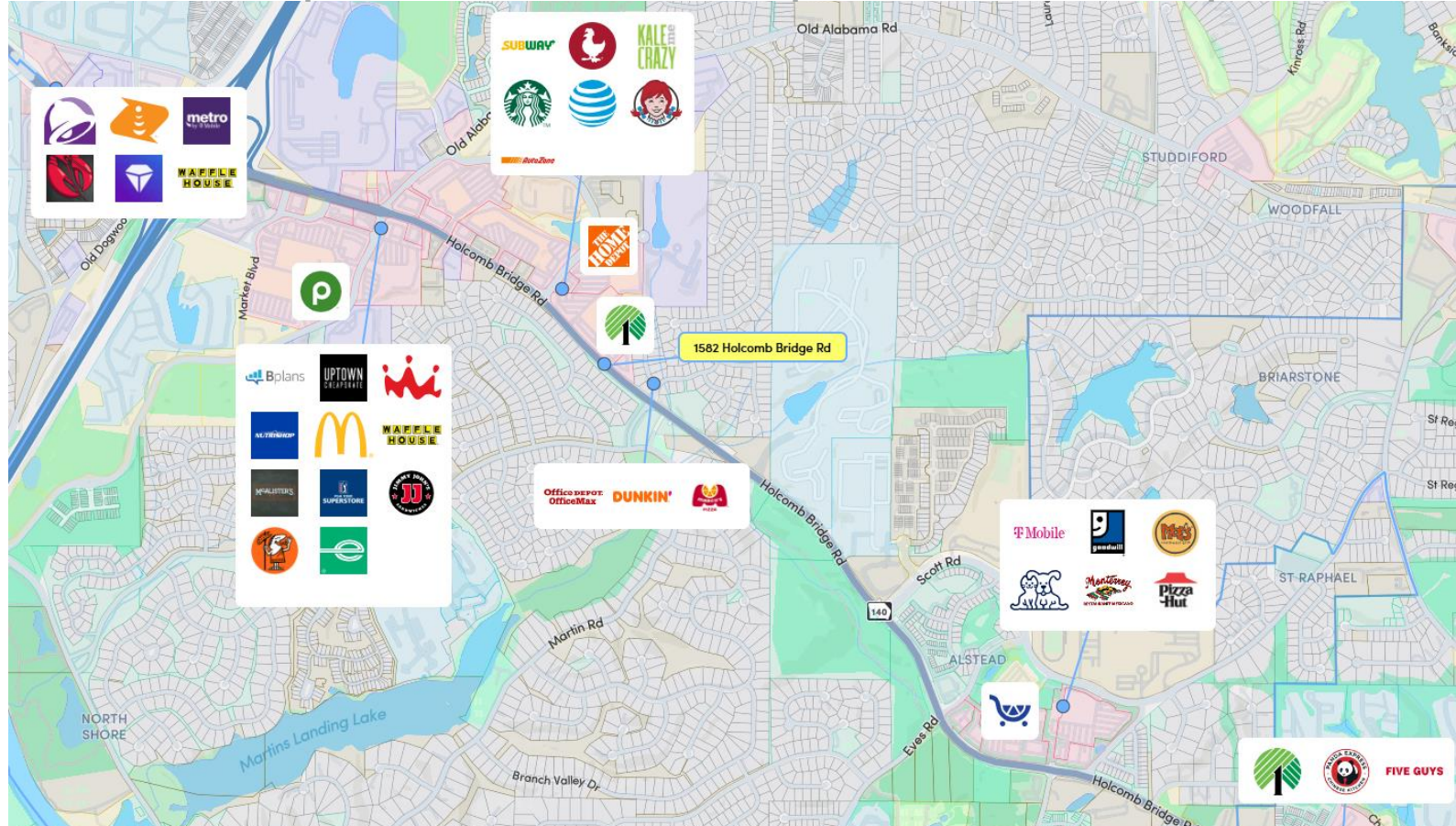
Household 2024

1 MILE	4,594
3 MILE	33,014
5 MILE	86,190



Household
Income

1 MILE	\$148,200
3 MILE	\$149,300
5 MILE	\$172,600



ROSWELL MARKET CENTER

Trade Area Overview

