

## 5353 WAYZATA OFFICE CENTER

5353 WAYZATA BOULEVARD, ST. LOUIS PARK, MN 55416



### PROPERTY DESCRIPTION

- 112,304 SF multi-tenant office building
- Premier visibility and access at Hwy 100 & I-394
- Adjacent to The Shops at West End
- Sheltered Bus Stop On-Site and adjacent Park-N-Ride
- Foodsby - food delivery service for the building
- Convenient lodging for your out of town clients and consultants; Hilton Homewood Suites next door
- Associated Bank is anchor tenant
- Web link: <https://buildout.com/website/5353Wayzata-lease>

AREA AMENITIES include over twelve restaurants within walking distance including CRAVE; The Local; The Loop; Raku Sushi & Lounge; Chi-Chi's; Yard house; Boketto: Hope Breakfast Bar; Jimmy John's; Urban Wok; Punch Bowl Social and more. Five Hotels: Homewood Suites, SpringHill Suites, AC Hotel, DoubleTree; and TownPlace Suites. Cub Foods/Liquor adjacent to property. Marcus Theatres, Costco; Hand & Stone massage and facial spa; Roosters, solidcore and more...

### BARRY BIRNBERG

952.820.1673

[barry.birnberg@northcocommercial.com](mailto:barry.birnberg@northcocommercial.com)

### PROPERTY HIGHLIGHTS

- Suite 150 - 5,803 SF (available 4/15/2026)
- Suite 201 - 991 SF
- Suite 300 - 6,391 SF (available 7/1/2026)
- Suite 503 - 907 SF
- Suite 607 - 1,795 SF (available 7/1/2026)

### OFFERING SUMMARY

Lease Rate:	\$17 - 20 SF/yr (NNN)
Available SF:	907 - 6,391 SF
2026 Tax and Ops:	\$14.89 SF
Building Size:	112,304 SF
Year Built:	1979

The information above has been obtained from services we believe to be reliable, however, we accept no responsibility for its correctness.

5353 WAYZATA OFFICE CENTER  
5353 WAYZATA BOULEVARD, ST. LOUIS PARK, MN 55416



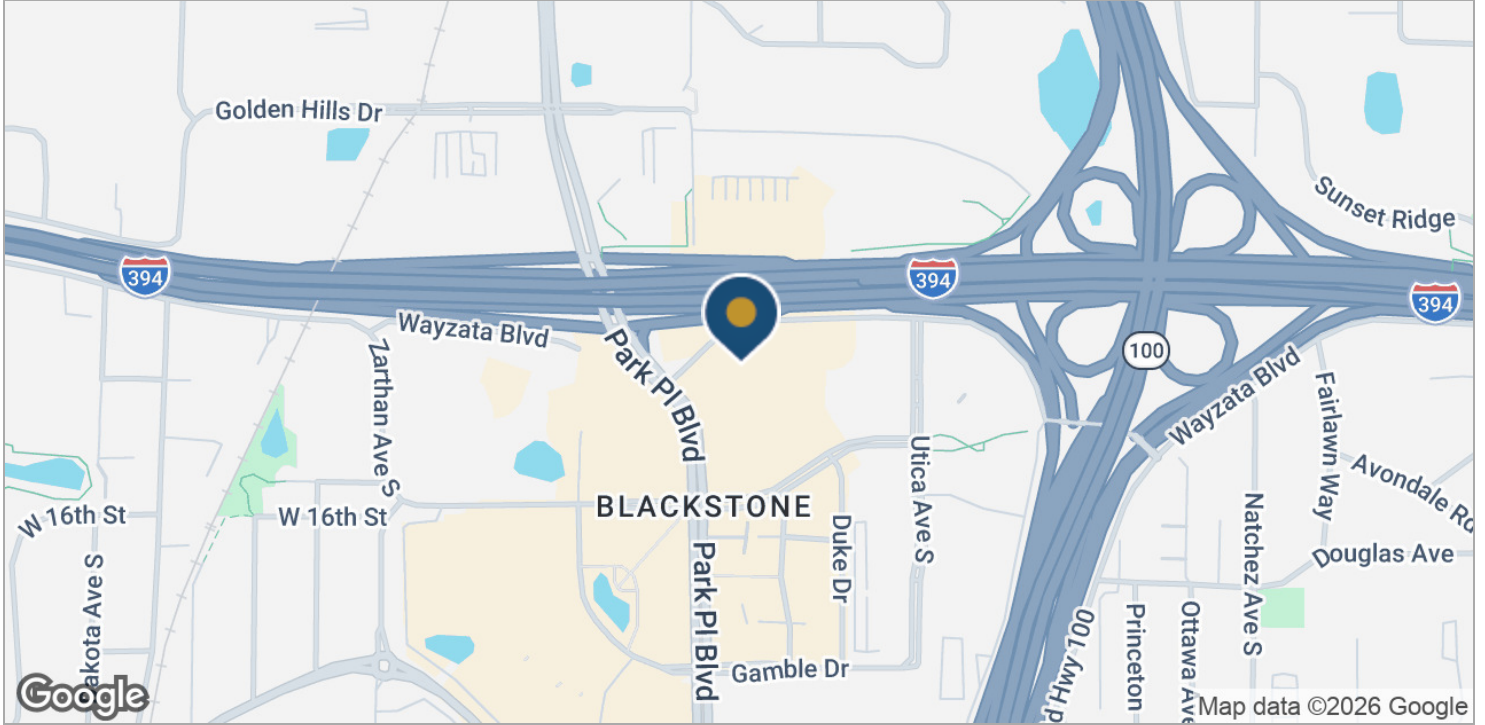
**BARRY BIRNBERG**

952.820.1673

[barry.birnberg@northcocommercial.com](mailto:barry.birnberg@northcocommercial.com)

The information above has been obtained from services we believe to be reliable, however, we accept no responsibility for its correctness.

5353 WAYZATA OFFICE CENTER  
5353 WAYZATA BOULEVARD, ST. LOUIS PARK, MN 55416



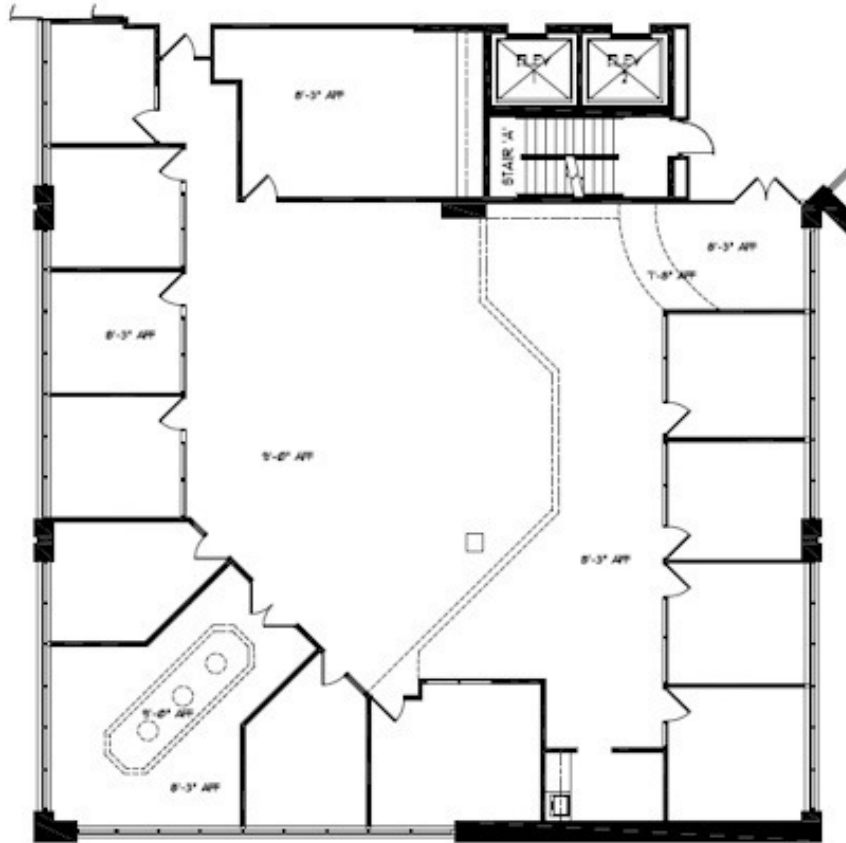
**BARRY BIRNBERG**

952.820.1673

The information above has been obtained from services we believe to be reliable, however, we accept no responsibility for its correctness.

[Barry.Birnberg@northcocommercial.com](mailto:Barry.Birnberg@northcocommercial.com)

5353 WAYZATA OFFICE CENTER  
5353 WAYZATA BOULEVARD, ST. LOUIS PARK, MN 55416



Suite 150  
5,803 SF

360° VIRTUAL TOUR

(NOT TO SCALE)

**BARRY BIRNBERG**

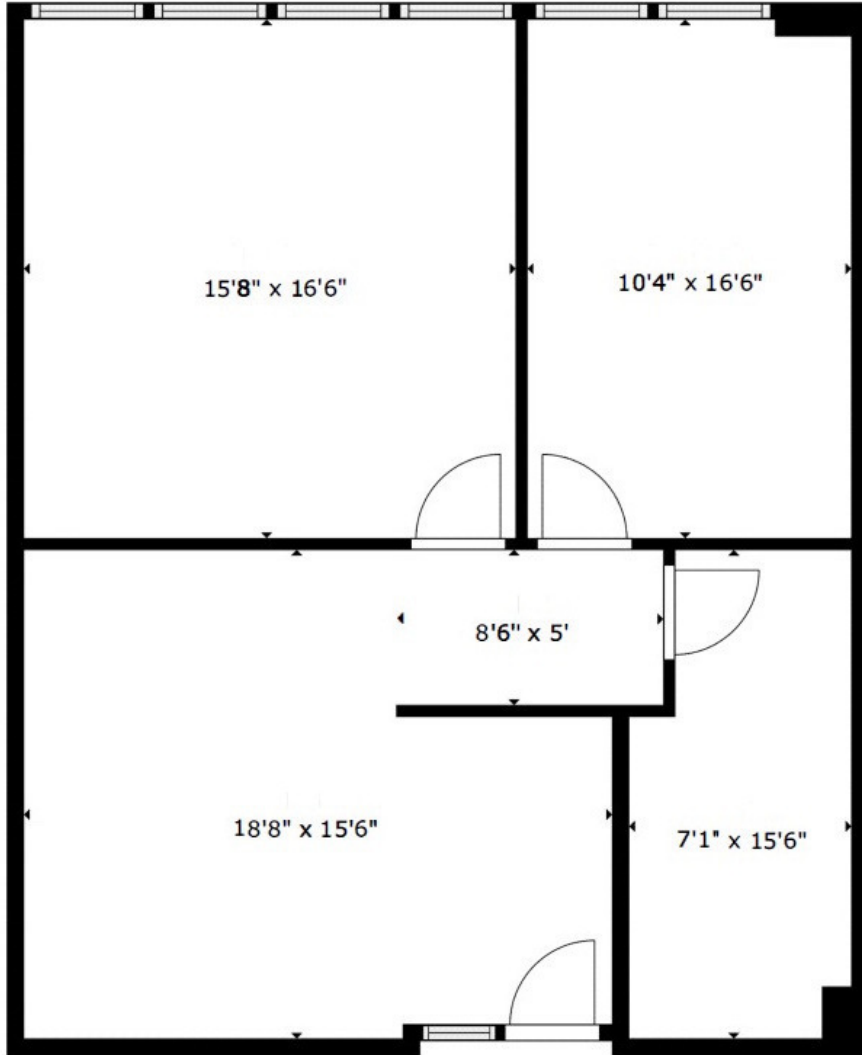
952.820.1673

barry.birnberg@northcocommercial.com

**SUITE 150 - 5,803 SF**

The information above has been obtained from services we believe to be reliable, however, we accept no responsibility for its correctness.

5353 WAYZATA OFFICE CENTER  
5353 WAYZATA BOULEVARD, ST. LOUIS PARK, MN 55416



Suite 201  
991 SF

SIZES AND DIMENSIONS ARE APPROXIMATE, ACTUAL MAY VARY.

**360° VIRTUAL TOUR**



(NOT TO SCALE)

**BARRY BIRNBERG**

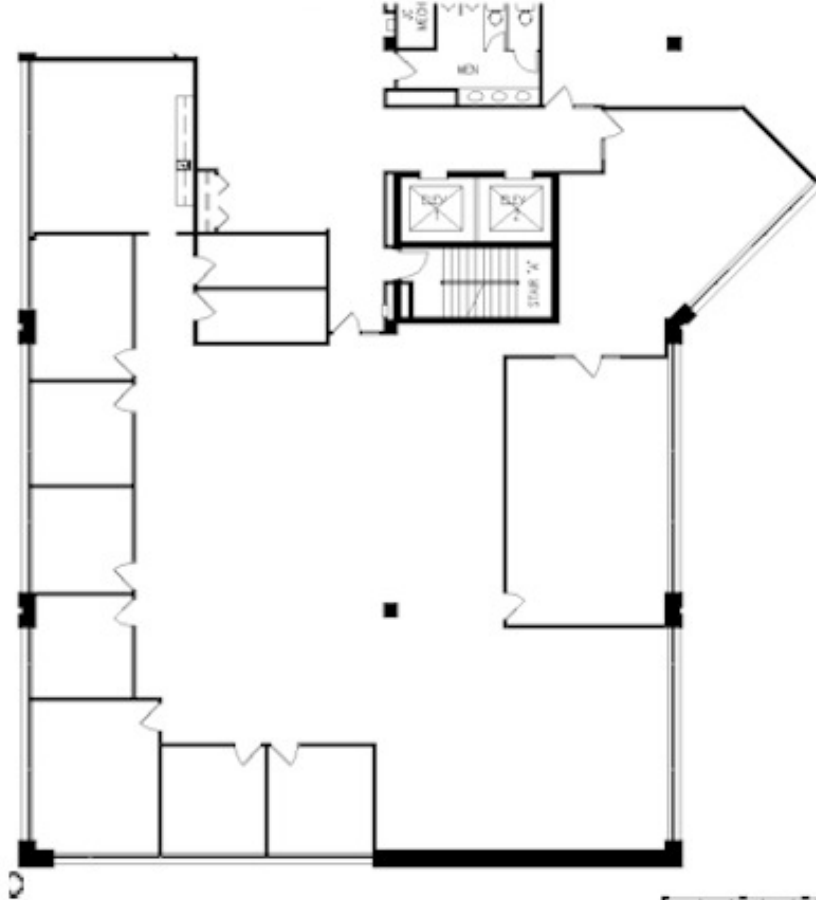
952.820.1673

barry.birnberg@northcocommercial.com

**SUITE 201 - 991 SF**

The information above has been obtained from services we believe to be reliable, however, we accept no responsibility for its correctness.

5353 WAYZATA OFFICE CENTER  
5353 WAYZATA BOULEVARD, ST. LOUIS PARK, MN 55416



Suite 300  
6,391 SF

[360° VIRTUAL TOUR](#)

(NOT TO SCALE)

**BARRY BIRNBERG**

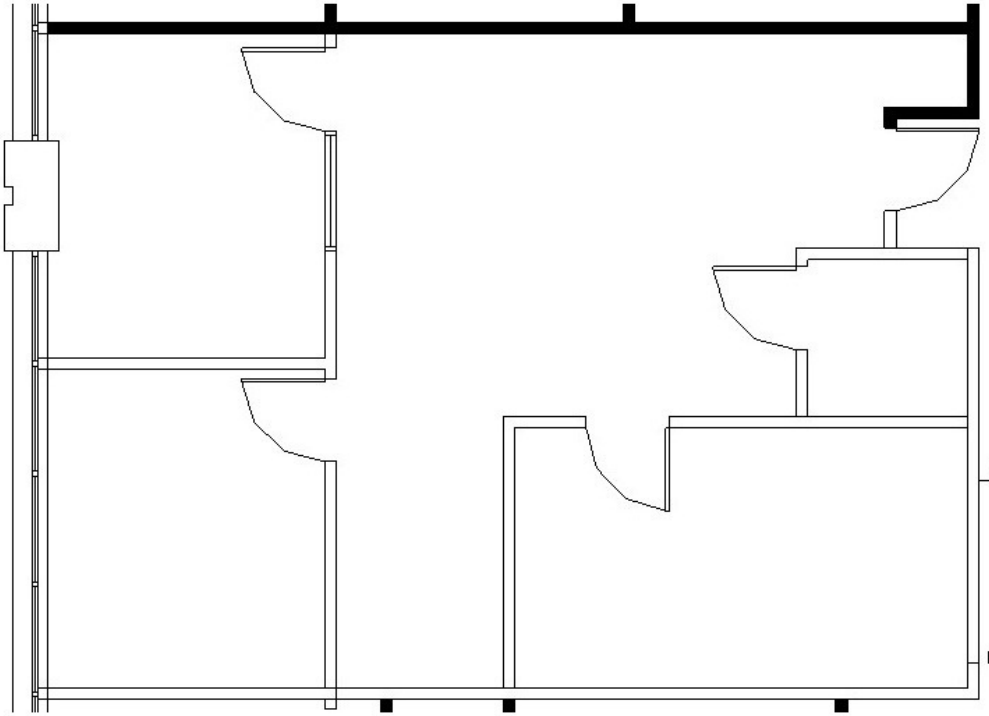
952.820.1673

[barry.birnberg@northcocommercial.com](mailto:barry.birnberg@northcocommercial.com)

**SUITE 300 - 6,391 SF**

The information above has been obtained from services we believe to be reliable, however, we accept no responsibility for its correctness.

5353 WAYZATA OFFICE CENTER  
5353 WAYZATA BOULEVARD, ST. LOUIS PARK, MN 55416



Suite 503  
907 SF



**360° VIRTUAL TOUR**

(NOT TO SCALE)

**BARRY BIRNBERG**

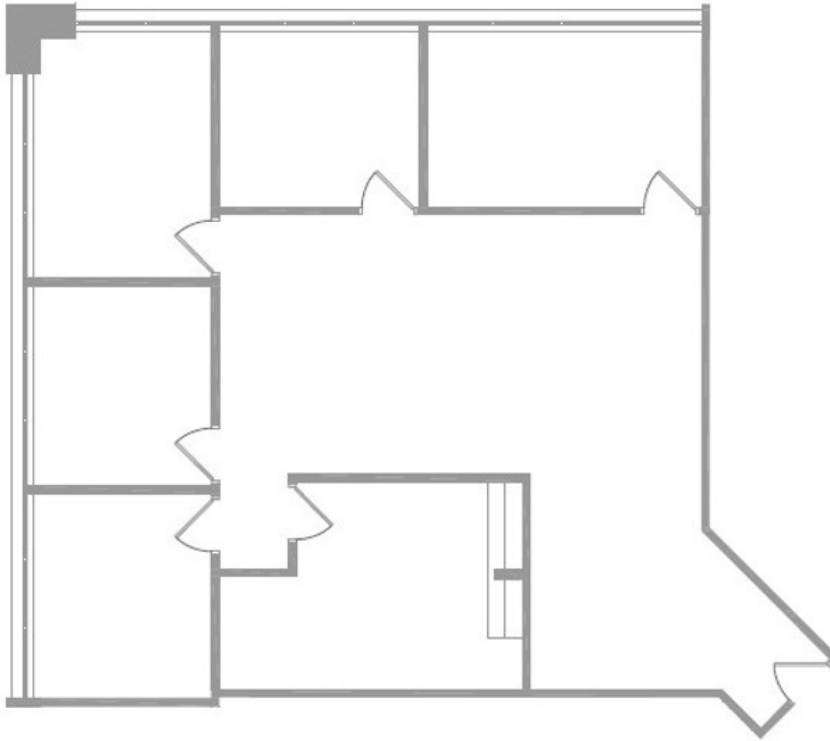
952.820.1673

barry.birnberg@northcocommercial.com

**SUITE 503 - 907 SF**

The information above has been obtained from services we believe to be reliable, however, we accept no responsibility for its correctness.

5353 WAYZATA OFFICE CENTER  
5353 WAYZATA BOULEVARD, ST. LOUIS PARK, MN 55416



Suite 607  
1,795 SF



360° VIRTUAL TOUR

**BARRY BIRNBERG**

952.820.1673

barry.birnberg@northcocommercial.com

**SUITE 607 - 1795 SF**

The information above has been obtained from services we believe to be reliable, however, we accept no responsibility for its correctness.