



**TO LET**

**RETAIL – 1,316 SQFT**

**161 CREEK ROAD, DEPTFORD, LONDON SE8 3EA**



## DESCRIPTION

The property comprises a ground floor retail unit, extending to approximately 1,316 sq ft (122 sq m). The unit forms part of a mixed-use development comprising 26 residential apartments.

The property is to be offered shell and core.

## LOCATION

The property is located at the junction of Creek Road and Glaisher Street.

Deptford Railway Station is located 0.5 miles from the property, providing services to Rainham, London Bridge, London St Pancras (Intl) and Luton.

Cutty Sark DLR Station is located 0.4 miles from the property, providing services to Lewisham, Canary Wharf and Bank DLR Stations.

Bus routes also operate in close proximity.

## AMENITIES / OPPORTUNITY

- Prominent corner location
- 1,316 sq ft of ground floor space
- Offered shell and core
- Use Class E

## RENT

To Let: **£28,000** per annum exclusive.

## RATES

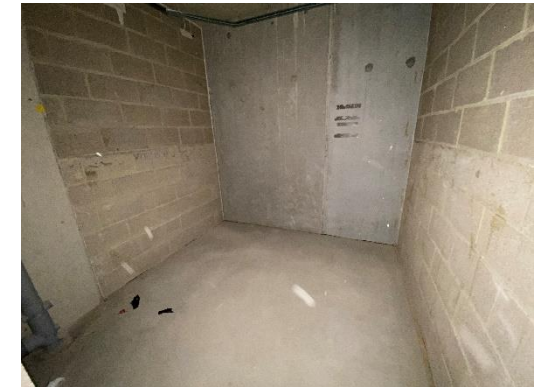
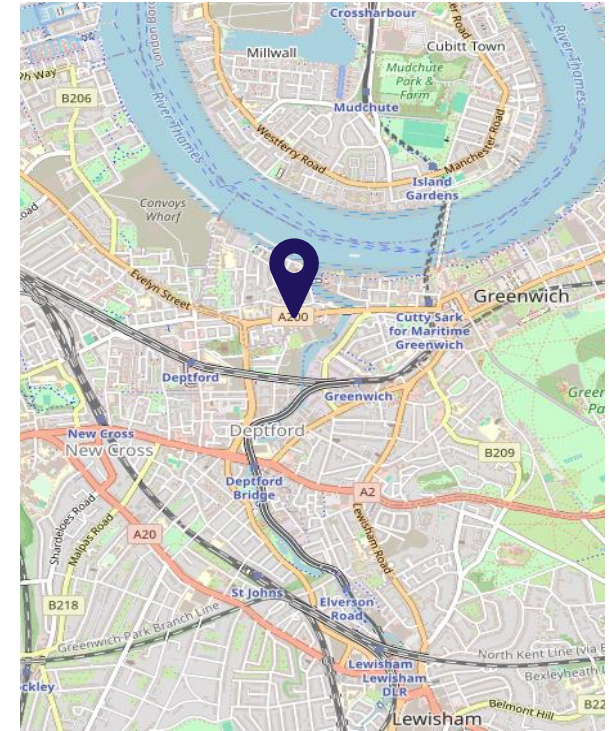
We advise parties to undertake their own enquiries with the VOA.

## VAT

VAT will be chargeable on the terms quoted.

## EPC

The property has an EPC rating A.



## VIEWINGS – 020 8662 2700

**Matt Morris**

t: 07894 692426

e: [mmorris@shw.co.uk](mailto:mmorris@shw.co.uk)

**Alex Thomson**

t: 07780 113019

e: [athomson@shw.co.uk](mailto:athomson@shw.co.uk)



@SHWProperty



SHW Property



SHW Property

**MAKING  
PROPERTY  
WORK**