

42171-42247 ANN ARBOR RD
PLYMOUTH, MICHIGAN

OFFICE FOR LEASE
386 – 4,626 Square Feet Available



**SIGNATURE
ASSOCIATES**
KNOW SIGNATURE | KNOW RESULTS

PMC CENTER EAST & WEST



PROPERTY FEATURES

- 386 – 4,626 square feet available
- High visibility location on Ann Arbor Rd.
- Easy Access to major freeways and Downtown Plymouth
- Retail and office suites available
- Well maintained building with on-site management
- Abundant Parking
- Lease Rate: \$16.00-\$22.00/sq. ft. Gross



For more information, please contact:

JASON STOUGH
(248) 948 4180
jstough@signatureassociates.com

SIGNATURE ASSOCIATES
One Towne Square, Suite 1200
Southfield, MI 48076
www.signatureassociates.com

42171-42247 Ann Arbor Road - Plymouth, Michigan

Office For Lease

386 – 4,626
Square Feet
AVAILABLE

Floor Plan EAST – Lower Level



For more information, please contact:

JASON STOUGH
(248) 948 4180
jstough@signatureassociates.com

SIGNATURE ASSOCIATES
One Towne Square, Suite 1200
Southfield, MI 48076
www.signatureassociates.com

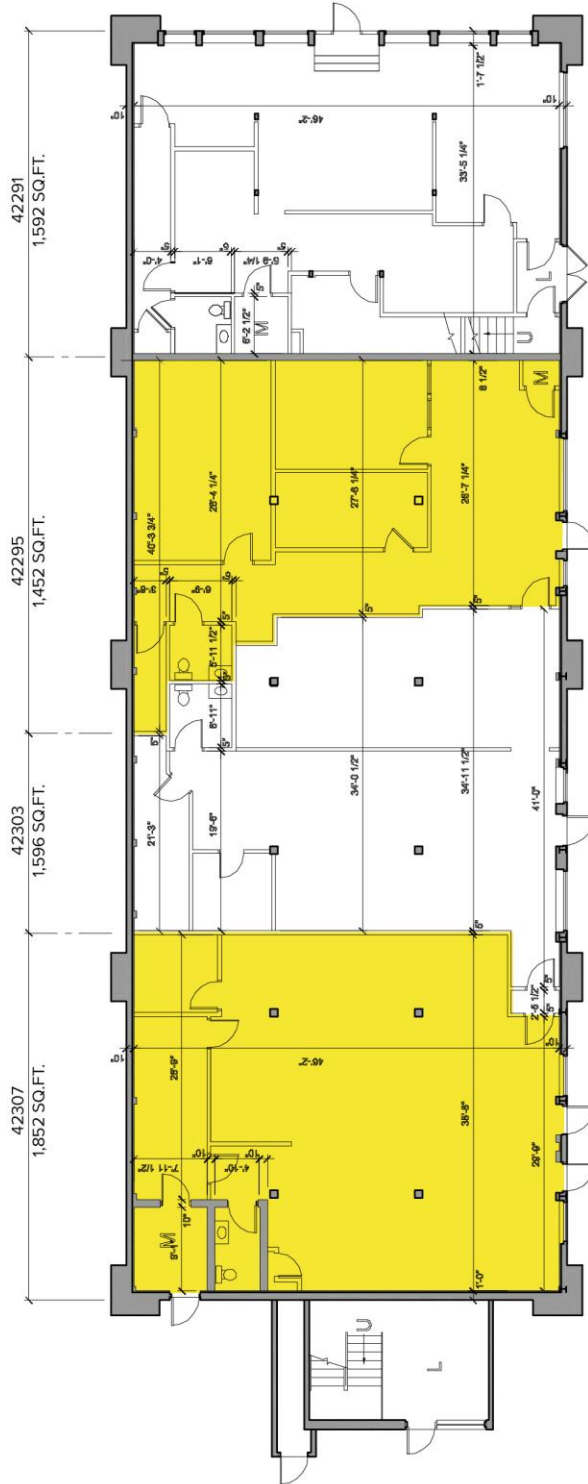
42171-42247 Ann Arbor Road - Plymouth, Michigan

Office For Lease

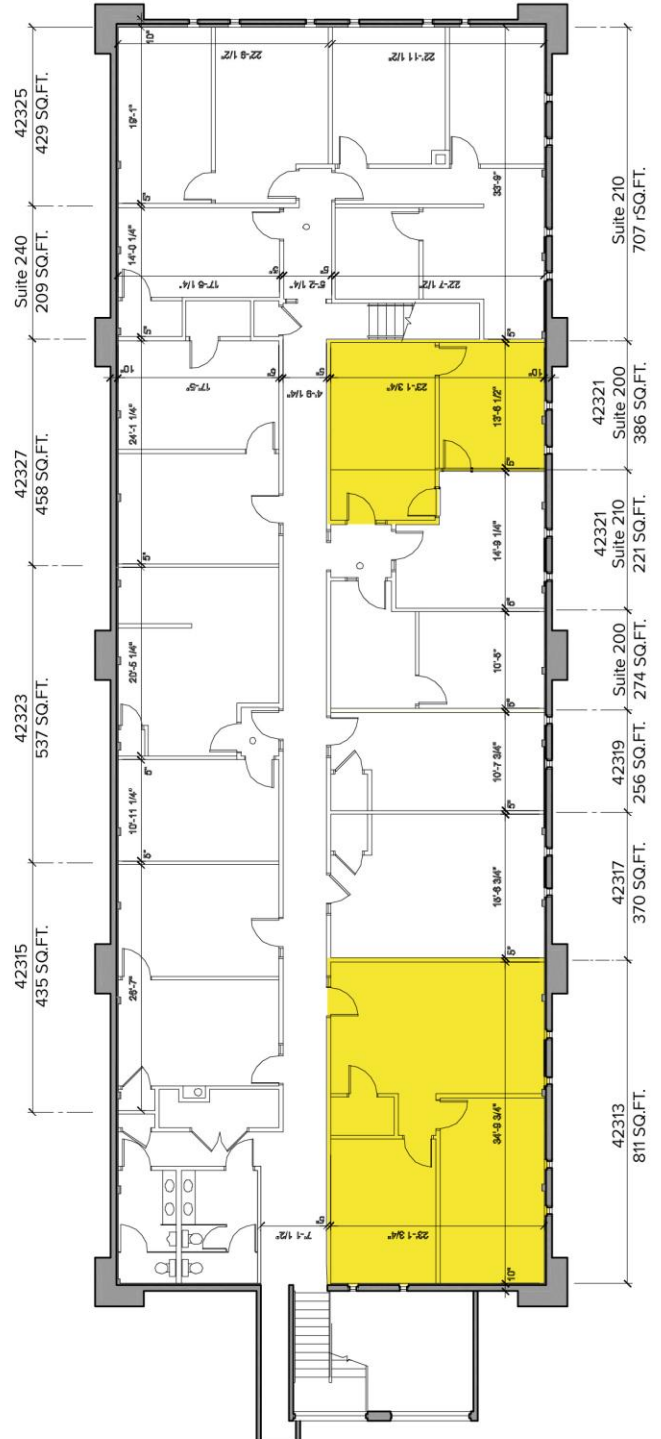
386 – 4,626
Square Feet
AVAILABLE

Floor Plan WEST – First and Second Floor

FIRST FLOOR



SECOND FLOOR



For more information, please contact:

JASON STOUGH
(248) 948 4180
jstough@signatureassociates.com

SIGNATURE ASSOCIATES
One Towne Square, Suite 1200
Southfield, MI 48076
www.signatureassociates.com