

# Burger

& COMPANY

## FOR LEASE

6810 Metroplex Drive  
Suite 100 - 200  
Romulus, Michigan  
14,000 - 31,000 Sq. Ft.



- 14,000 - 31,000 square feet available for lease
- Suite 100 is 17,000 square feet and suite 200 is 14,000 square feet
- Each suite features One (1) truckwell and one (1) grade level door
- 16' clear height
- 3 phase / heavy power
- Quick access to I-94, I-275, and Telegraph
- Fenced yard space
- Suite 100 provides immediate occupancy and Suite 200 will be available September 1st, 2026
- Lease rate: \$6.95 square foot modified gross

**Burger & Company**

Paul Burger, SIOR  
President  
Cell: 586.202.7800  
paul@burgercollc.com

Nicolo Burger, SIOR, CCIM  
Vice President  
Cell: 810.224.8103  
nic@burgercollc.com

248.536.2888  
www.burgercollc.com  
38345 W. 10 Mile Road, Suite 100  
Farmington Hills, MI 48335

Information contained herein is deemed to be reliable but is not guaranteed and may be withdrawn at any time.

# FOR LEASE

6810 Metroplex Drive  
Suite 100- 200  
Romulus, MI



## BUILDING SPECIFICATIONS

<b>Location</b>	Ecorse & Middlebelt	<b>Square Feet Available</b>	14,000 - 31,000 SF
<b>Zoning</b>	M-1 Light Industrial	<b>Office Square Feet</b>	3,000 - 4,500 SF
<b>Lot Size</b>	1.77 Ares	<b>Warehouse Square Feet</b>	11,000 - 26,500 SF
<b>Construction</b>	Block	<b>Grade Level Doors</b>	Two (2) 10'x12' (1 per suite)
<b>Clear Height</b>	16'	<b>Dock Doors</b>	Two (2) (1 per suite)
<b>Cranes</b>	No	<b>Power</b>	3Phase 220/480 Volts
<b>Heating</b>	Gas Forced Air	<b>Sprinklers</b>	No
<b>Buss Duct</b>	Yes	<b>Restrooms</b>	Many
<b>Floors</b>	Carpet/Marble	<b>Freestanding</b>	Yes/Duplex

### Description

- 14,000 - 31,000 square feet available for lease
- Suite 100 is 17,000 square feet and suite 200 is 14,000 square feet
- Each suite features One (1) truckwell and one (1) grade level door
- 16' clear height
- 3 phase / heavy power
- Quick access to I-94, I-275, and Telegraph
- Fenced yard space

<b>Lease Rate</b>	\$6.95 Per Square Foot
<b>Lease Type</b>	Gross
<b>Availability</b>	Suite 100 - Immediate Occupancy Suite 200 - September 1st, 2026

**Burger**

& COMPANY

Paul Burger, SIOR  
President  
Cell: 586.202.7800  
paul@burgercollc.com

Nicolo Burger, SIOR, CCIM  
Vice President  
Cell: 810.224.8103  
nic@burgercollc.com

248.536.2888  
www.burgercollc.com  
38345 W. 10 Mile Road, Suite 100  
Farmington Hills, MI 48335

Information contained herein is deemed to be reliable but is not guaranteed and may be withdrawn at any time.

# FOR LEASE

6810 Metroplex Drive  
Suite 100- 200  
Romulus, MI

---

## OFFICE SPACE



Paul Burger, SIOR  
President  
Cell: 586.202.7800  
paul@burgercollc.com

Nicolo Burger, SIOR, CCIM  
Vice President  
Cell: 810.224.8103  
nic@burgercollc.com

248.536.2888  
www.burgercollc.com  
38345 W. 10 Mile Road, Suite 100  
Farmington Hills, MI 48335

Information contained herein is deemed to be reliable but is not guaranteed and may be withdrawn at any time.

# FOR LEASE

6810 Metroplex Drive  
Suite 100- 200  
Romulus, MI

## WAREHOUSE



**Burger**

& COMPANY

Paul Burger, SIOR  
President  
Cell: 586.202.7800  
paul@burgercollc.com

Nicolo Burger, SIOR, CCIM  
Vice President  
Cell: 810.224.8103  
nic@burgercollc.com

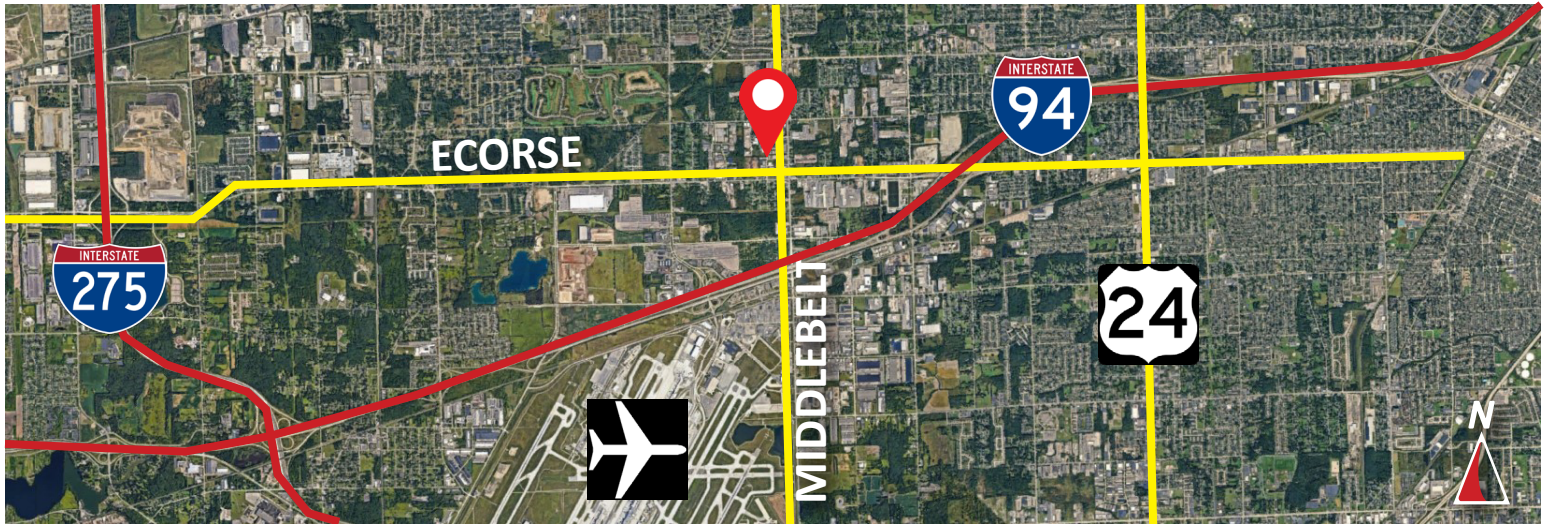
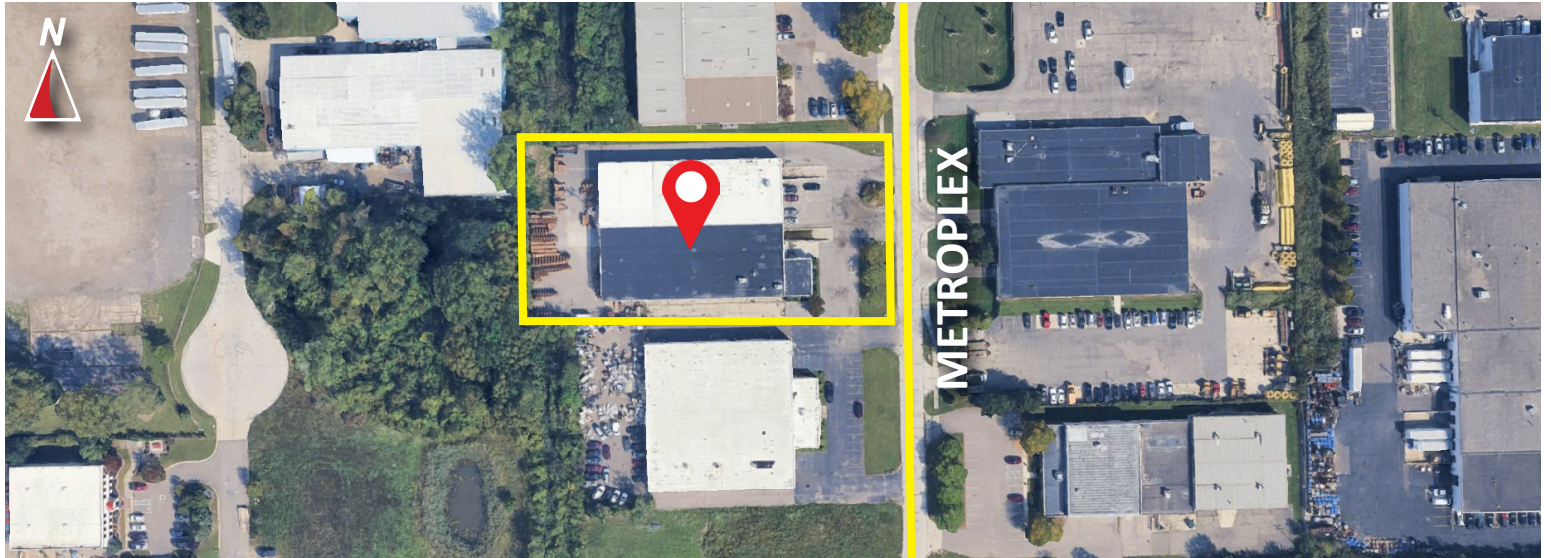
248.536.2888  
www.burgercollc.com  
38345 W. 10 Mile Road, Suite 100  
Farmington Hills, MI 48335

Information contained herein is deemed to be reliable but is not guaranteed and may be withdrawn at any time.

# FOR LEASE

6810 Metroplex Drive  
Suite 100- 200  
Romulus, MI

## AERIAL



**Burger**

& COMPANY

Paul Burger, SIOR  
President  
Cell: 586.202.7800  
paul@burgercollc.com

Nicolo Burger, SIOR, CCIM  
Vice President  
Cell: 810.224.8103  
nic@burgercollc.com

248.536.2888  
www.burgercollc.com  
38345 W. 10 Mile Road, Suite 100  
Farmington Hills, MI 48335

Information contained herein is deemed to be reliable but is not guaranteed and may be withdrawn at any time.