

2530

DOUGLAS BLVD

 ROSEVILLE, CA

PROFESSIONAL OFFICE SUITE FOR LEASE



[CLICK TO WATCH A WALKTHROUGH](#)

 **GALLELLI**
REAL ESTATE

 **OSBORNE**
GROUP

Robb Osborne
Executive Vice President
DRE #01398696
(916) 789-2700
rosborne@gallellire.com

Brandon Sessions
Senior Vice President
DRE #01914432
(916) 789-3339
bsessions@gallellire.com

Kannon Kuhn
Associate
DRE #02079314
(916) 789-3333
kkuhn@gallellire.com



PROPERTY HIGHLIGHTS

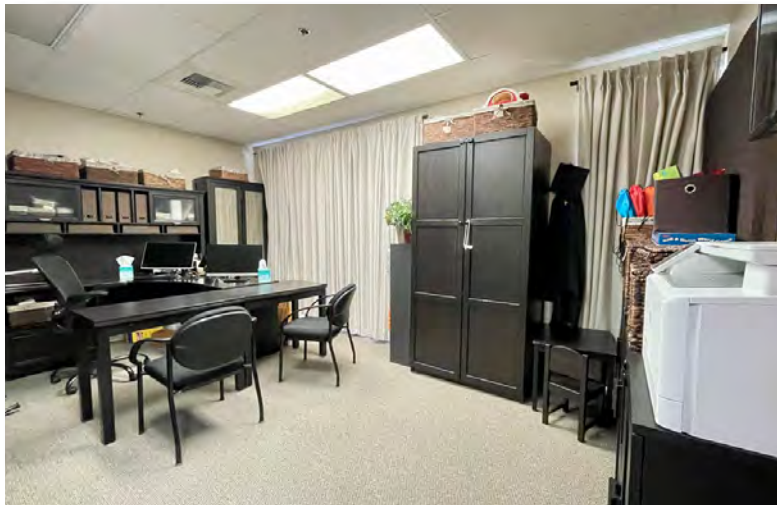
- 2530 Douglas Blvd, Roseville
- Suite 110: ± 1,217 SF Available for Lease
- Single-story, office building located at Professional Drive and Douglas Blvd
- Multi-tenant build out with a shared common area restroom
- Fully improved suite includes 6 offices (2 Executive), reception area and lobby
- The perimeter offices have sliding glass doors
- Perimeter windows cover the entire building allowing for great natural light
- Highly desirable office complex in the heart of Roseville's business and medical district

Lease Amount:
\$2.25/SF Full Service

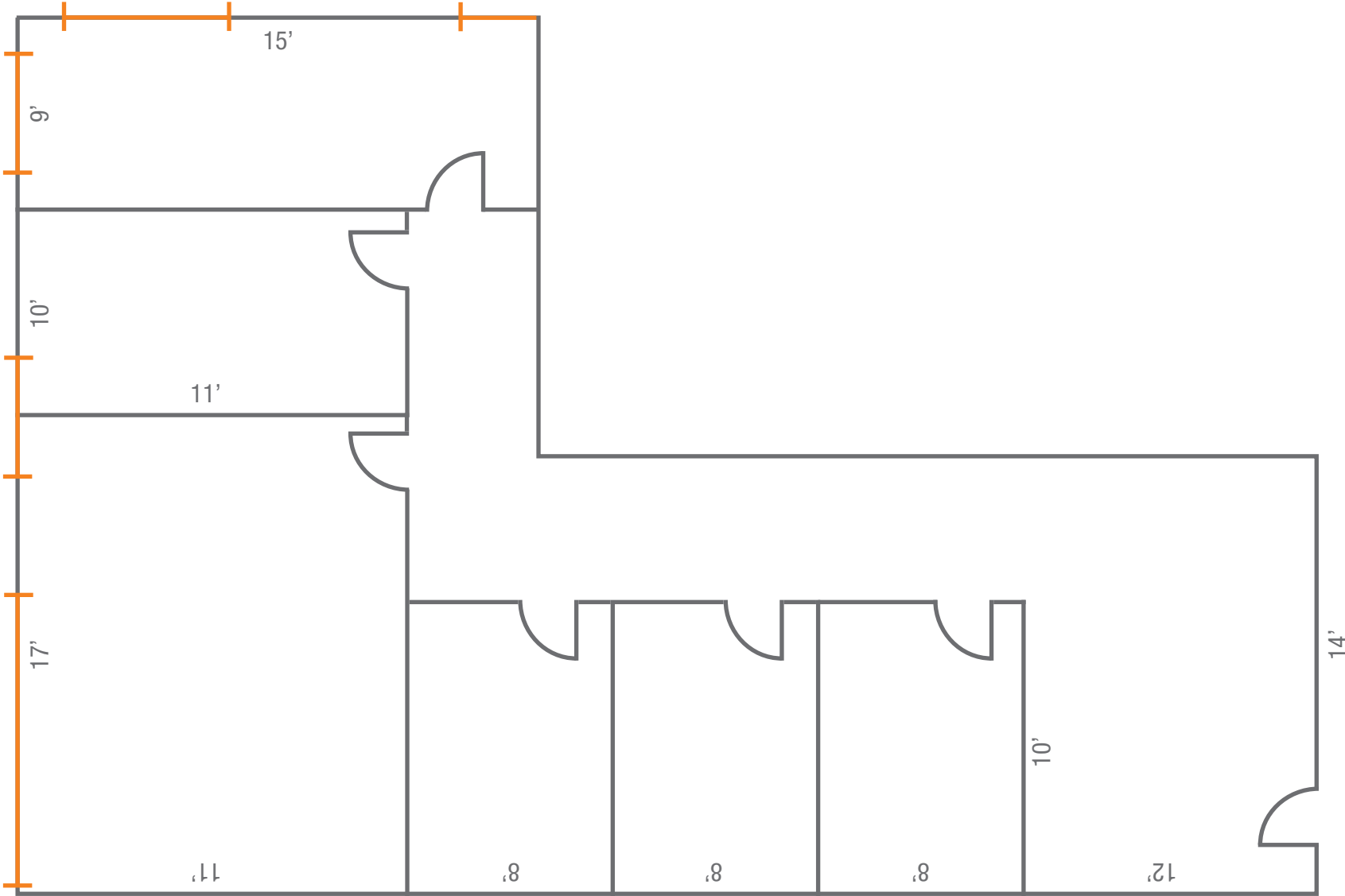
(Suite janitorial is not included in the lease rate)

PROPERTY IMAGES

[CLICK TO WATCH A WALKTHROUGH](#)



FLOOR PLAN



Window

**Not to Scale*



Robb Osborne
Executive Vice President
DRE #01398696
(916) 789-2700
rosborne@gallire.com

Brandon Sessions
Senior Vice President
DRE #01914432
(916) 789-3339
bsessions@gallire.com

Kannon Kuhn
Associate
DRE #02079314
(916) 789-3333
kkuhn@gallire.com



www.osbornegroupcre.com

SINGLE STORY OFFICE BUILDING - SUITE FOR LEASE

**2530 Douglas Blvd,
Roseville, CA 95661**