

FOR SALE OFFICE BUILDING



HAVEN
PROPERTY
GROUP

ORLANDO, FL 32803
1920 E ROBINSON ST

TYPE OFFICE BUILDING

SIZE 1,803 SF



PROPERTY DESCRIPTION

For Sale a prime opportunity for owner occupants and investors to acquire this renovated 1,803 SF property located in the thriving City of Orlando. Strategically located near the 408 and the Orlando Executive Airport, this well-appointed building offers seamless accessibility. Zoned O-1/T/AN, the property provides a versatile space for a range of business endeavors. Situated within walking distance of Dickson Azalea Park and Mayor Carl T. Langford Park, this property presents a desirable blend of functionality and convenience in a sought-after Orlando locale. With the added convenience of 6 to 8 parking spaces and on-street parking, occupants and guests will have plenty of options. The property includes 2 sets of executive offices with connected assistant's offices as well as reception, kitchenette, conference room, 2 bathrooms, and owner's suite office with adjacent assistance office space as well.

PROPERTY HIGHLIGHTS

- Conveniently located in Orlando near the 408 and I4
- Walking distance to Dickson Azalea Park and Mayor Carl T. Langford Park
- Nestled between the Milk District and Thornton Park
- Easy access to the Orlando Executive Airport

LOCATION DESCRIPTION

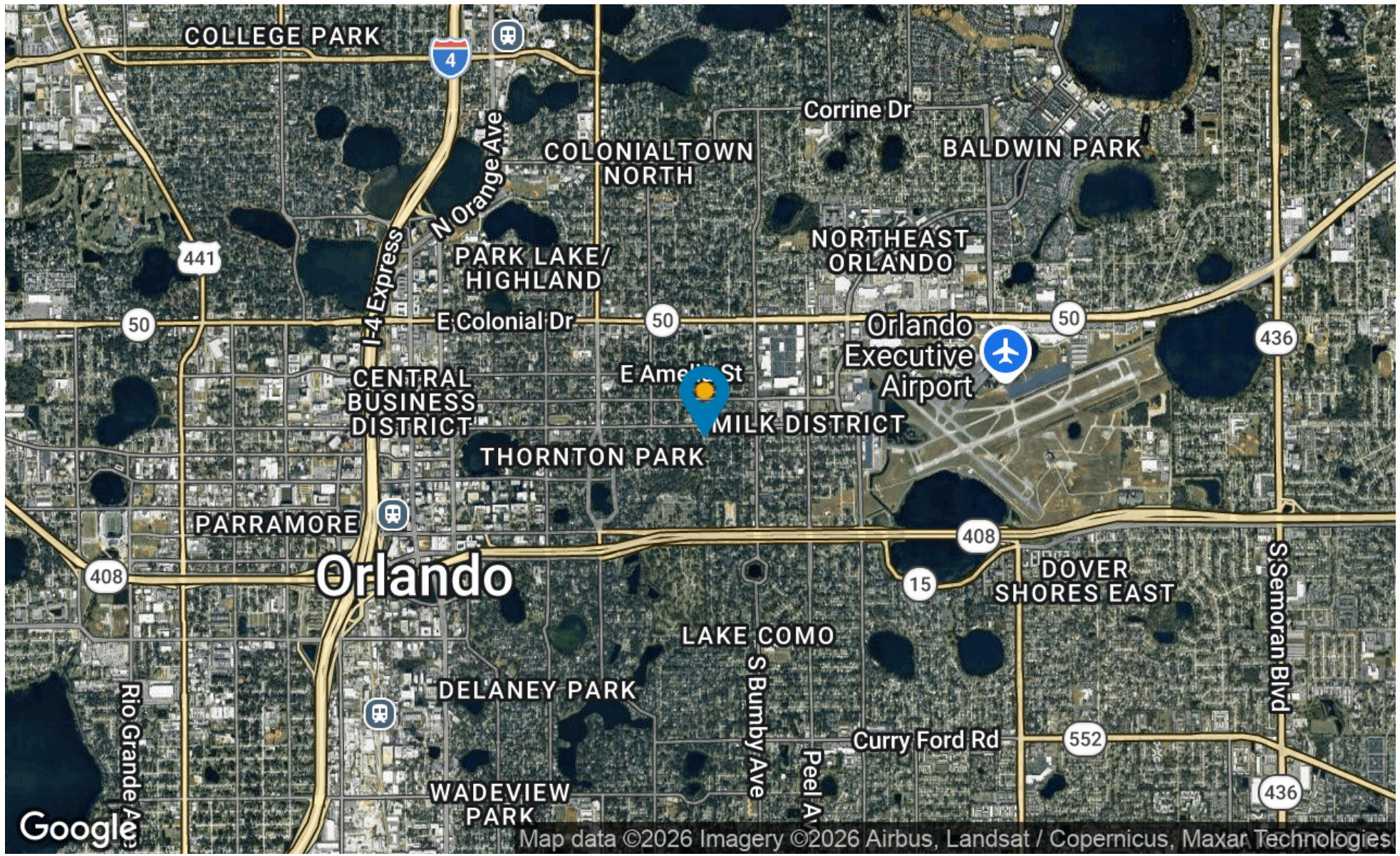
Situated in the heart of Orlando, the Robinson Street Office offers owner occupants and investors a prime location with access to a vibrant business community. The property is surrounded by a dynamic mix of trendy cafes, charming restaurants, and boutique shops, fostering a lively and engaging work environment. Just a short distance away, Lake Eola Park provides a picturesque setting for relaxation and outdoor recreation. walking distance to both the Dickson Azalea Park and Mayor Carl T. Langford Parks. Nearby cultural attractions such as the Orlando Museum of Art and the Dr. Phillips Center for the Performing Arts offer enriching experiences for tenants and visitors alike.

OFFERING SUMMARY

Sale Price:	\$775,000
Lot Size:	8,389 SF
Building Size:	1,803 SF



PROXIMITY TO ORLANDO THORNTON PARK AND THE MILK DISTRICT





HAVEN
PROPERTY
GROUP

AARON BLAKE

> 407.758.1945
> AARON@HAVENPROPERTYGROUP.COM



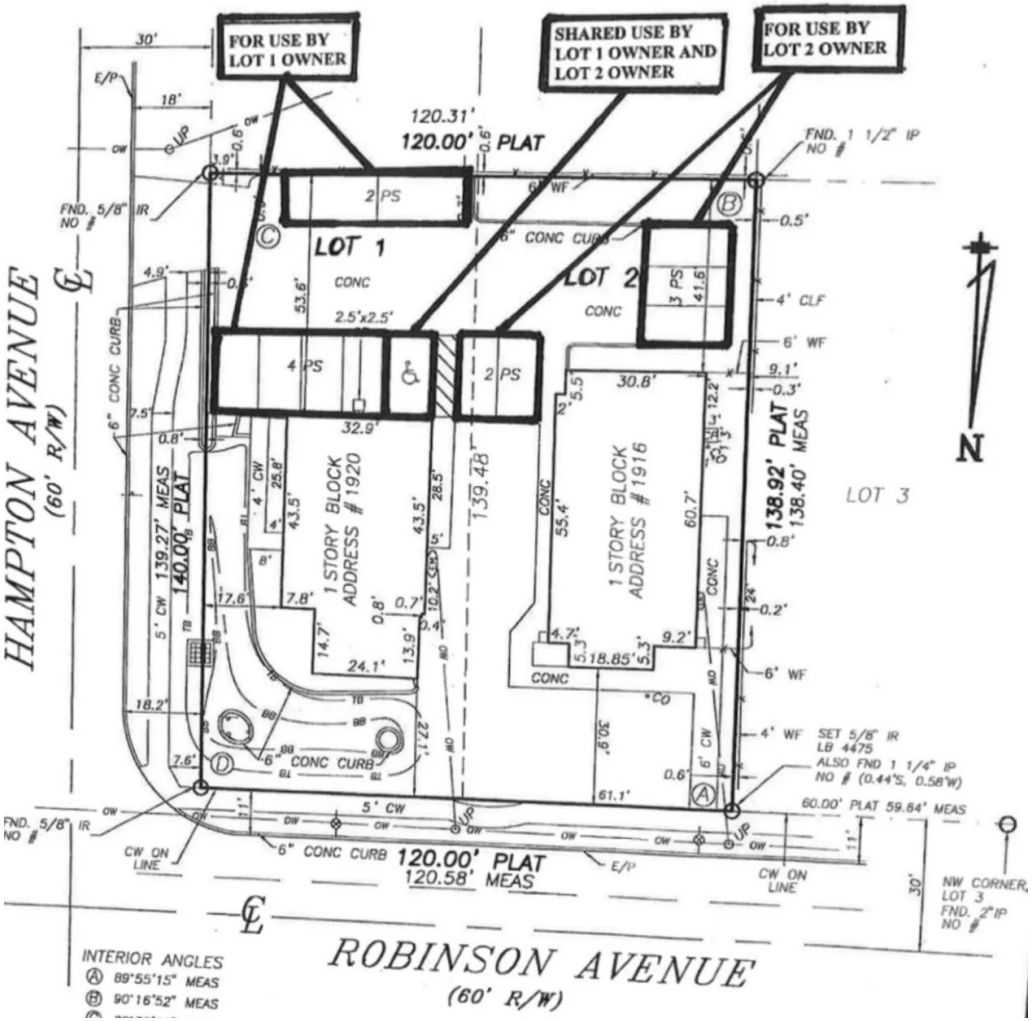


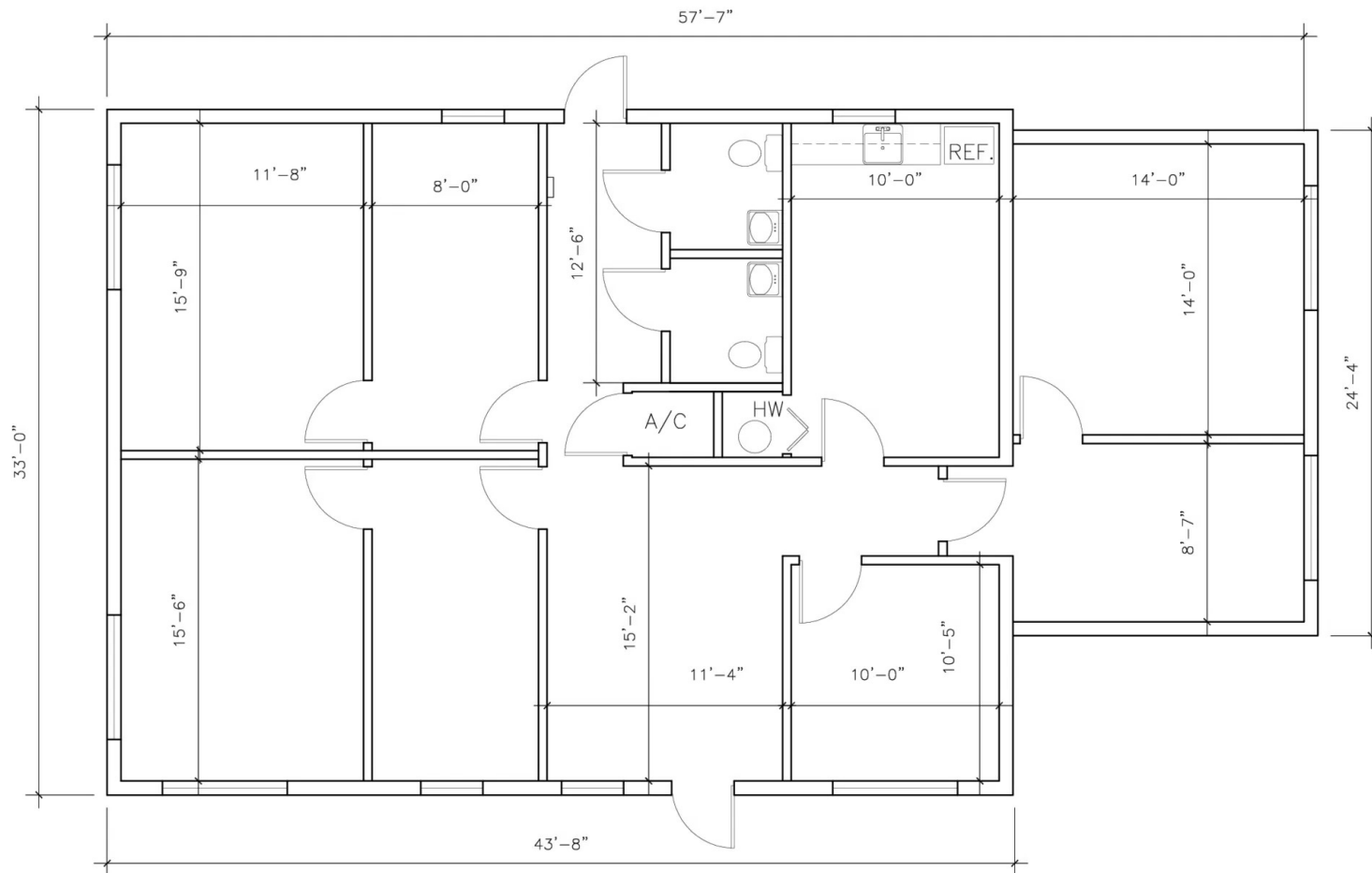


PLAT OF SURVEY

DESCRIPTION

LOTS 1 AND 2, BLOCK A, REPLAT OF ROSARDEN AS RECORDED IN PLAT BOOK G, PAGE 22, PUBLIC RECORDS OF ORANGE COUNTY, FLORIDA.





FLOOR PLAN

920 E. Robinson St.



1/8" = 1'-0"