

FOR LEASE | CLEARBROOK BUSINESS PARK



5707 - 5711 LACEY BLVD SE, LACEY, WA 98503

PROPERTY OVERVIEW

The Clearbrook Business Park in Lacey, Washington, provides a premier leasing environment tailored for diverse business operations. This multi-tenant property features three buildings specifically designed to accommodate flexible office, retail, and warehouse configurations. The park offers an ideal setting for primary industrial uses alongside secondary retail applications.

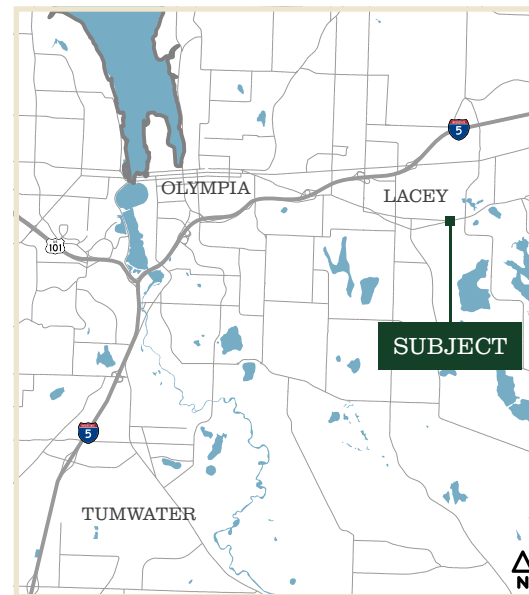
Tenants benefit from ample parking and highly visible signage opportunities directly accessible from Lacey Boulevard. Furthermore, the location boasts an excellent existing tenant mix, fostering a dynamic and collaborative commercial community.

YEAR BUILT: 1978

CLEAR HEIGHT: 12 - 15 FEET

LAND ACRES: 2.78 AC

PARKING: 94 SURFACE SPACES



Quint Newell
COMMERCIAL BROKER

360.688.8333

quintn@greenecommercial.com

Information provided is from sources deemed reliable but is not guaranteed and is subject to errors, omissions, change of price, or withdrawal without notice. All projections, square footages, and property lines are approximate, provided for illustrative marketing purposes only, and do not constitute a certified appraisal or legal survey (RCW 18.43). Prospective buyers and tenants must independently verify all boundaries, dimensions, and property data with licensed professionals. Greene Commercial assumes no liability for the accuracy of these depictions.



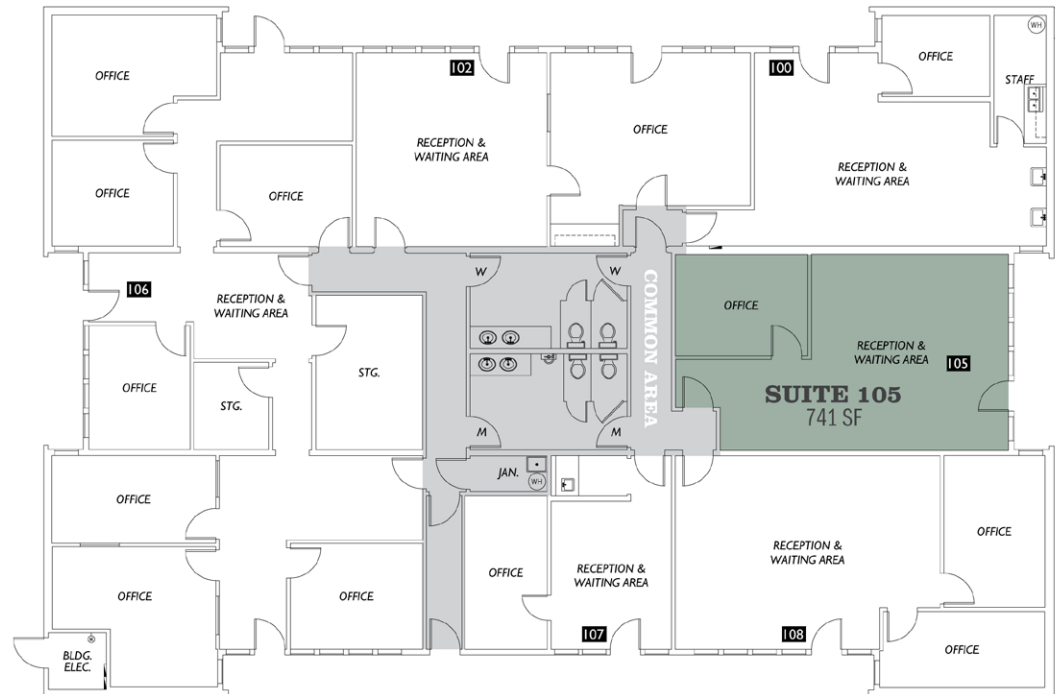
GREENE
COMMERCIAL

360.528.4167

greenecommercial.com



BUILDING 5707 - SUITE 105



AVAILABLE

THIS FLOORPLAN IS NOT TO SCALE
 SIZES AND DIMENSIONS ARE APPROXIMATE, ACTUAL MAY VARY.
This information, while obtained from sources we deem reliable, is not guaranteed. It is provided without any representation, warranty or guarantee, expressed or implied as to its accuracy. Prospective buyer or tenant should conduct an independent investigation and verification of all matters deemed to be material, including, but not limited to, statements of income and expenses. Consult your attorney, accountant, or other professional advisor.

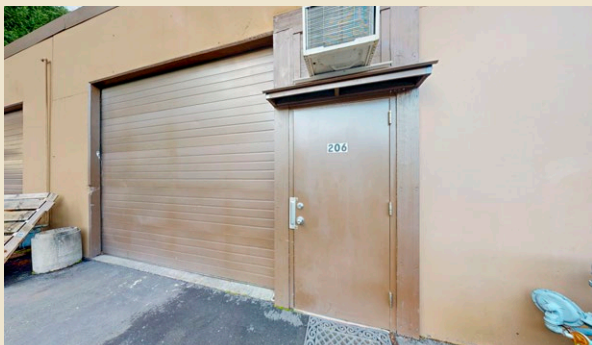
741 SF

\$18.00/SF, +NNN (EST \$8.65)

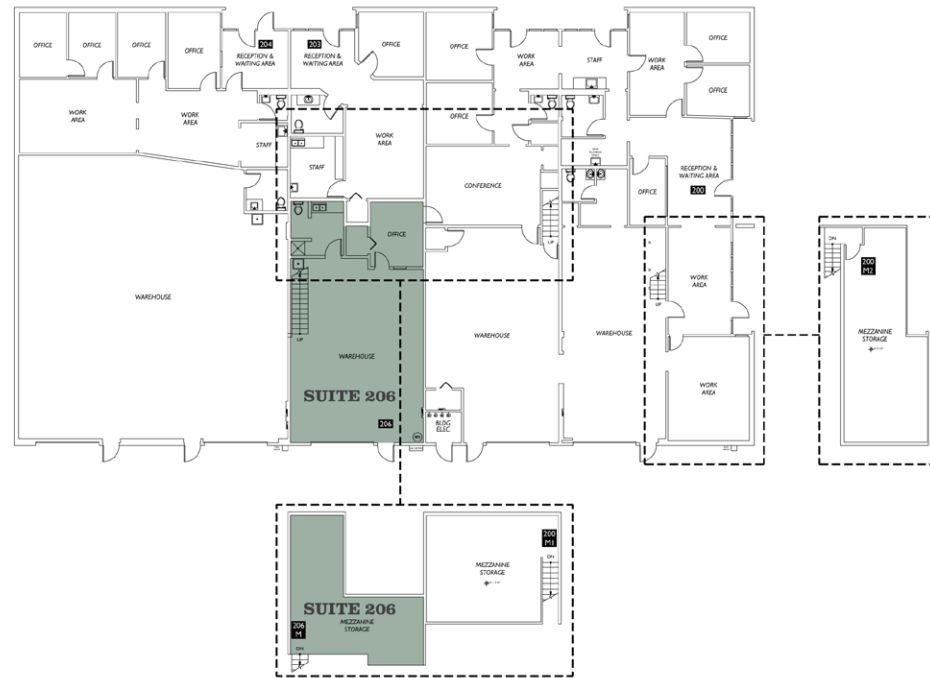
CBA# 42779585

Quint Newell
 COMMERCIAL BROKER
 360.688.8333
 quintn@greenecommercial.com

360°
 greene.properties/Clearbrook_105



BUILDING 5709 - SUITE 206



AVAILABLE

THIS FLOORPLAN IS NOT TO SCALE
 SIZES AND DIMENSIONS ARE APPROXIMATE, ACTUAL MAY VARY.
This information, while obtained from sources we deem reliable, is not guaranteed. It is provided without any representation, warranty or guarantee, expressed or implied as to its accuracy. Prospective buyer or tenant should conduct an independent investigation and verification of all matters deemed to be material, including, but not limited to, statements of income and expenses. Consult your attorney, accountant, or other professional advisor.

1,580 SF

\$16.00/SF, +NNN (EST \$5.69)

CBA# 44444512

Quint Newell
 COMMERCIAL BROKER
 360.688.8333
 quintn@greenecommercial.com

360°
 greene.properties/Clearbrook_206