

For Sale

Clayton Fixture

4820 HIGHWAY 42, ELLENWOOD, GA 30294

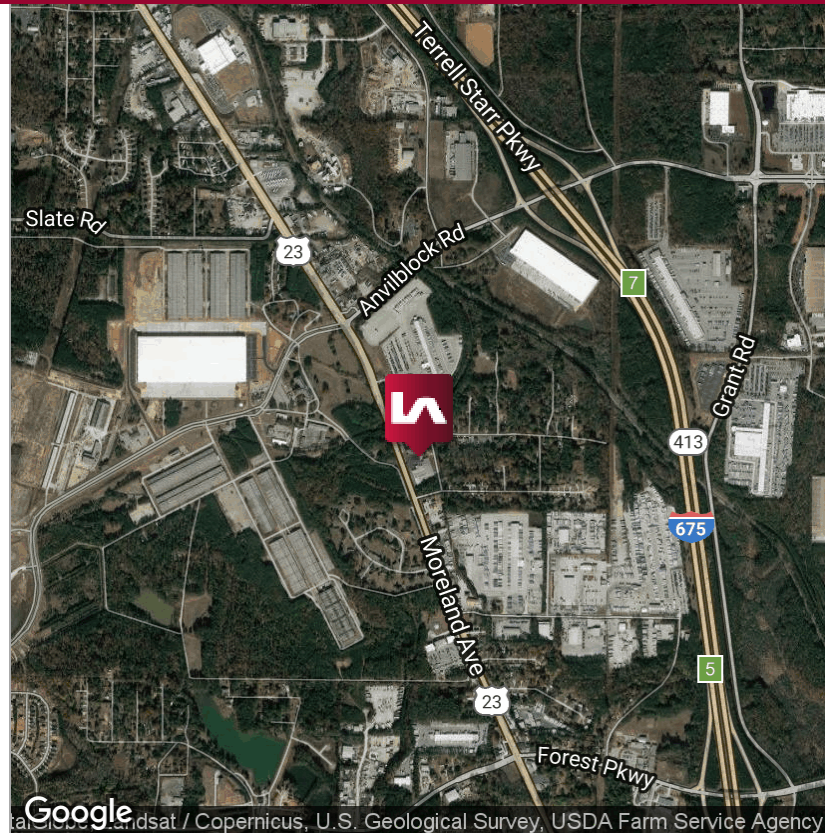


PROPERTY OVERVIEW

County: Clayton
Location Description: Building along Highway 42 (east side) approximately 2/3 mile from I-675/Anvil Block Road exit.
Subtype: Manufacturing / Distribution
Submarket: South Atlanta / Airport
Zoning: HI (Heavy Industrial)
Acreage: ±4.29 AC
Parking: Car Parking: ±50 spaces
Loading: Dock High Doors: 6, Drive-in Doors: 0
Year Built: 1966 / 1983 / 1988 / 1995
Clear Height: 12' - 14'
Sprinklered: Wet; .21 gpm/1500 SF
Lighting: T-6 fluorescent
Power: 220V / 1,600 Amps / 3 Phase

LISTING DATA

Available SF: ±59,272
Sale Price: \$1,485,000
Comments: Physical spec sheet available, Very clean and in good condition, Ideal for manufacturing, assembly and/or fabrication, Metal construction with well insulated ceiling and walls



For more information contact:

LEE & ASSOCIATES COMMERCIAL REAL ESTATE SERVICES P: 404.442.2810

Rick Tumlin, CCIM, SIOR rtumlin@lee-associates.com D: 404.442.2816
Mike Sutter msutter@lee-associates.com D: 404.442.2804

Will Alligood walligood@lee-associates.com D: 404.442.2813

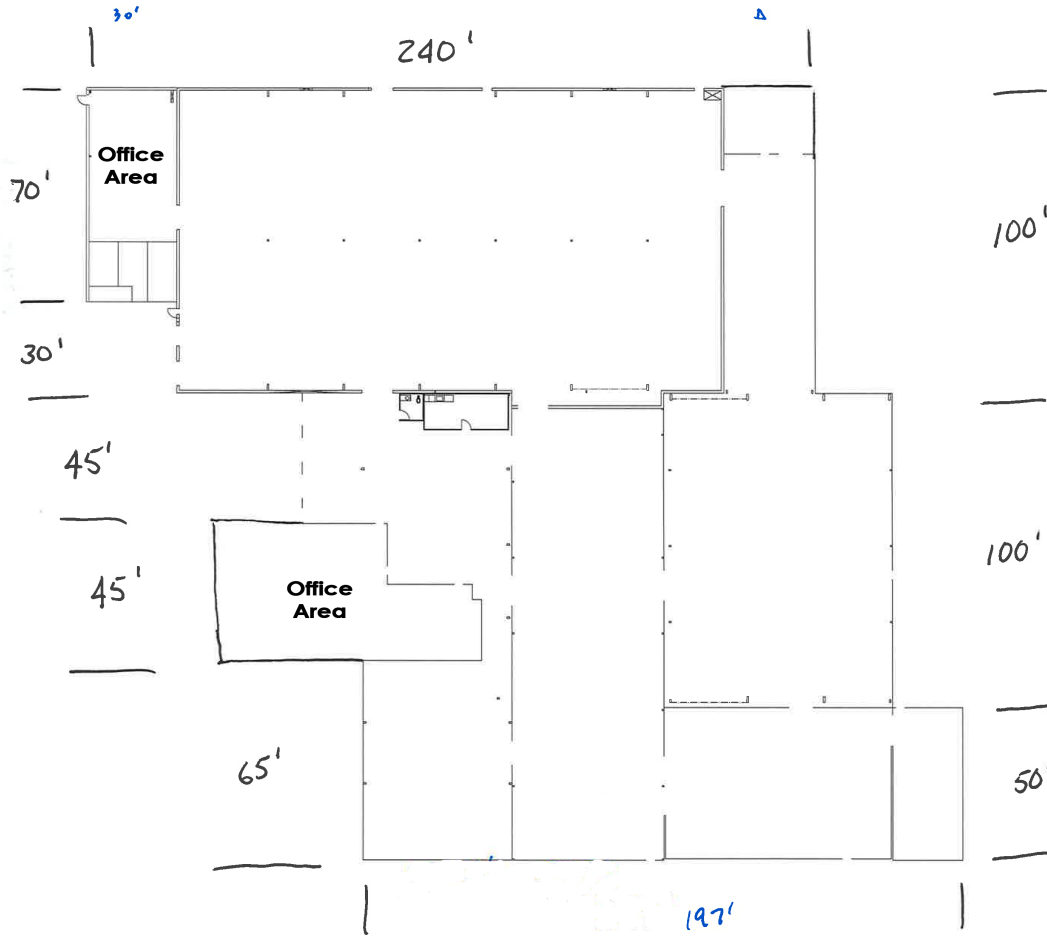
lee-associates.com



For Sale

Clayton Fixture

4820 HIGHWAY 42, ELLENWOOD, GA 30294



For more information contact:

LEE & ASSOCIATES
COMMERCIAL REAL ESTATE SERVICES
P: 404.442.2810

Rick Tumlin, CCIM, SIOR
rtumlin@lee-associates.com
D: 404.442.2816

Mike Sutter
msutter@lee-associates.com
D: 404.442.2804

Will Alligood
walligood@lee-associates.com
D: 404.442.2813

CCIM SIOR

lee-associates.com

