

# Office/Retail/Pro/Medical Space

*Excellent Exposure On Rt. 1*

*335 Providence Highway, Westwood, MA*

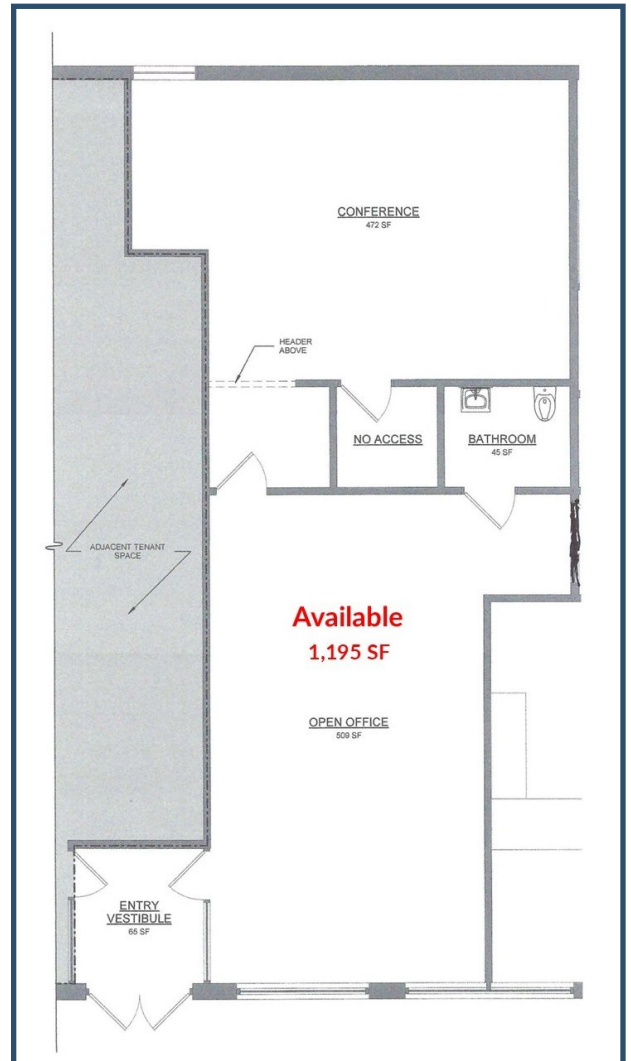
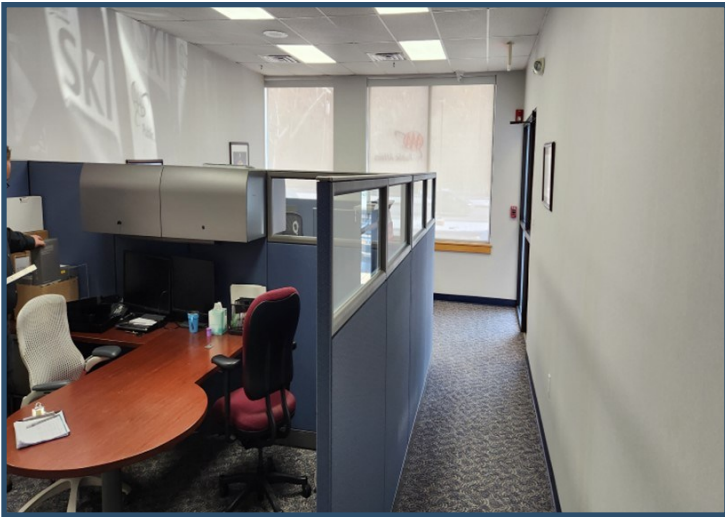
*1,195 SF Available*



Tremendous access to Rt. 128/I-95 within 1/2 mile. Over 40,000 ADT facing Route 1. Open bullpen, conference room, employee break area, ADA bathroom in 1,195 SF retail location. Adjacent to Ski and Sports and AAA. Ample parking. Great location for Professionals needing exposure and regional access. Ready for immediate delivery.

## Office/Retail/Pro/Medical Space

335 Providence Highway | Westwood, MA



Bull pen area, conference room, ADA bathroom, and employee break area. Entry into the space has a common vestibule. Great signage on façade as well as Pylon on Rt. 1 with over 40,000 cars daily passing the site. Great regional access to Canton, Dedham and Norwood.

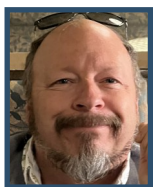
## Office/Retail/Pro/Medical Space

335 Providence Highway | Westwood, MA



2025 Demographics	2 Mile	3 Miles	5 Miles
Estimated Population	27,291	61,182	168,715
Estimated Median HH Income	\$125,774	\$125,953	\$125,566

## Contact Us



**Bobby Burke**

508-479-5294

[bobby.acreco@gmail.com](mailto:bobby.acreco@gmail.com)

### American Commercial Real Estate

50 Ledgeview Way #2415, Wrentham, Massachusetts 02093

Tel: (508) 735-6378 | E-mail: [dusty@acreco.com](mailto:dusty@acreco.com) | [www.acreco.com](http://www.acreco.com)