



**WINTER PARK
MEDICAL
FOR LEASE**

**340 N WYMORE RD.
WINTER PARK, FL 32789**



LEE ZERIVITZ, SIOR, CCIM
Managing Partner
407.644.CITY
lee@citycommercial.com

CITY COMMERCIAL
1101 Symonds Ave.
Winter Park, FL 32789
CITYCommercial.com



FOR LEASE

WINTER PARK MEDICAL OFFICE

Lease Rate	\$24.00 MG
Total SF	± 1,770 SF

Prime Winter Park Medical Space

Summary:

- Space available: ± 1,770 RSF
- Excellent in-place Medical buildout
- Located in between Lee Rd and Fairbanks
- Professional & newly renovated building with brick exterior
- Two suite building: Park Ave Plastic Surgery & Spa - main tenant
- Beyond ample parking
- Monument signage on Wymore Rd.

Suite Highlights

- First class finishes and fixtures throughout
- 3 exam rooms with sinks
- Private physician restroom
- Wood floors throughout
- Private rear entry/exit
- Sick & well waiting areas
- Private rear entrance/exit



LEE ZERIVITZ, SIOR, CCIM
Managing Partner
407.644.CITY
lee@citycommercial.com

CITY COMMERCIAL
1101 Symonds Ave.
Winter Park, FL 32789
CITYCommercial.com



FOR LEASE

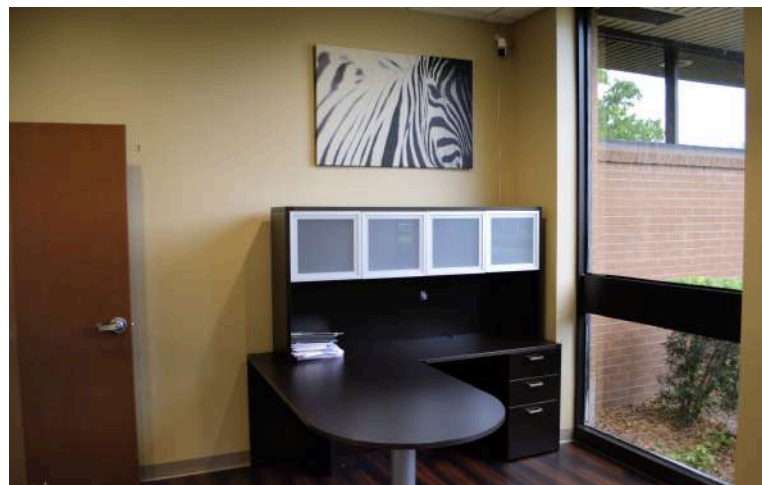


LEE ZERIVITZ, SIOR, CCIM
Managing Partner
407.644.CITY
lee@citycommercial.com

CITY COMMERCIAL
1101 Symonds Ave.
Winter Park, FL 32789
CITYCommercial.com



FOR LEASE



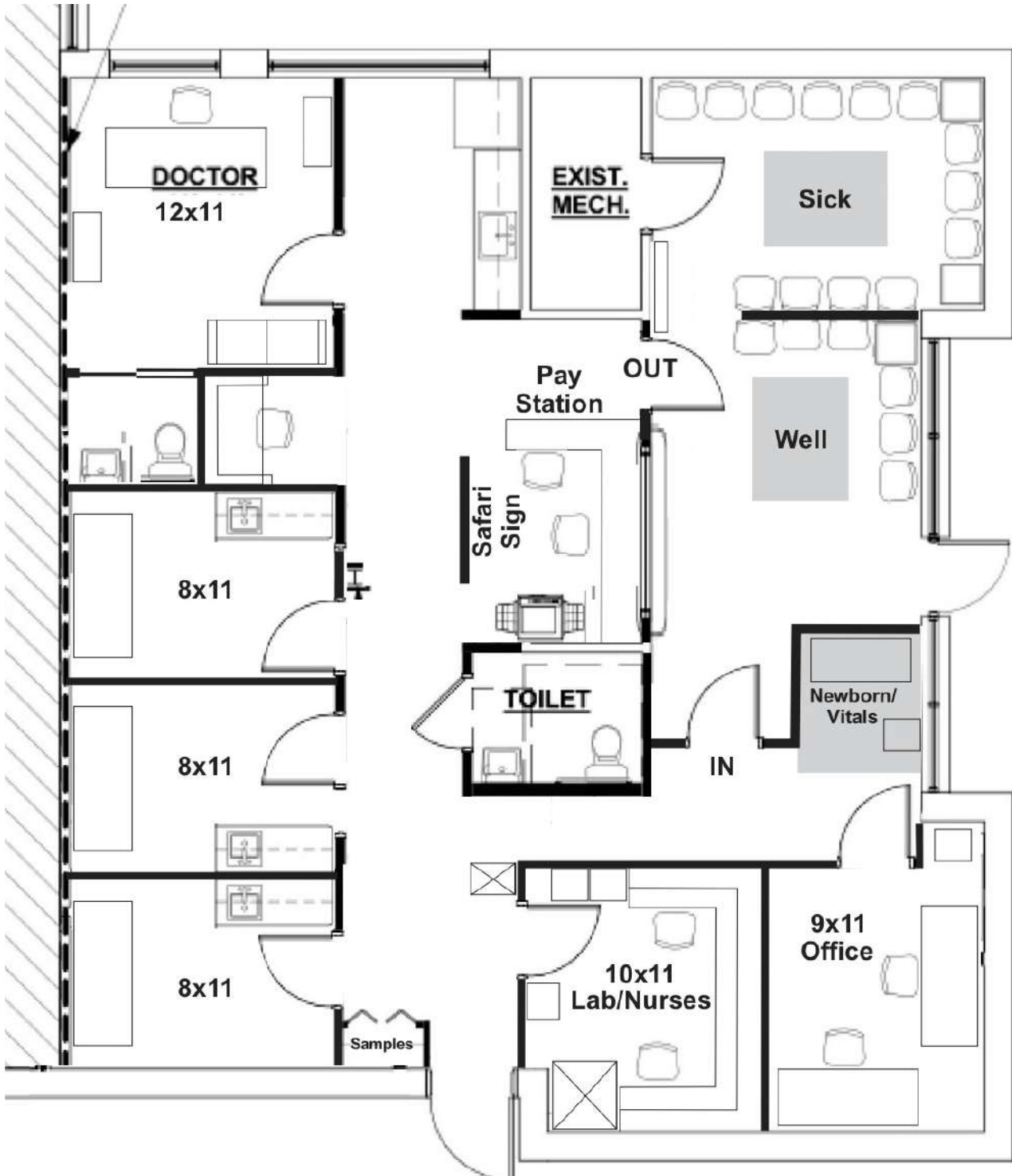
LEE ZERIVITZ, SIOR, CCIM
Managing Partner
407.644.CITY
lee@citycommercial.com

CITY COMMERCIAL
1101 Symonds Ave.
Winter Park, FL 32789
CITYCommercial.com



FOR LEASE

Space Plan



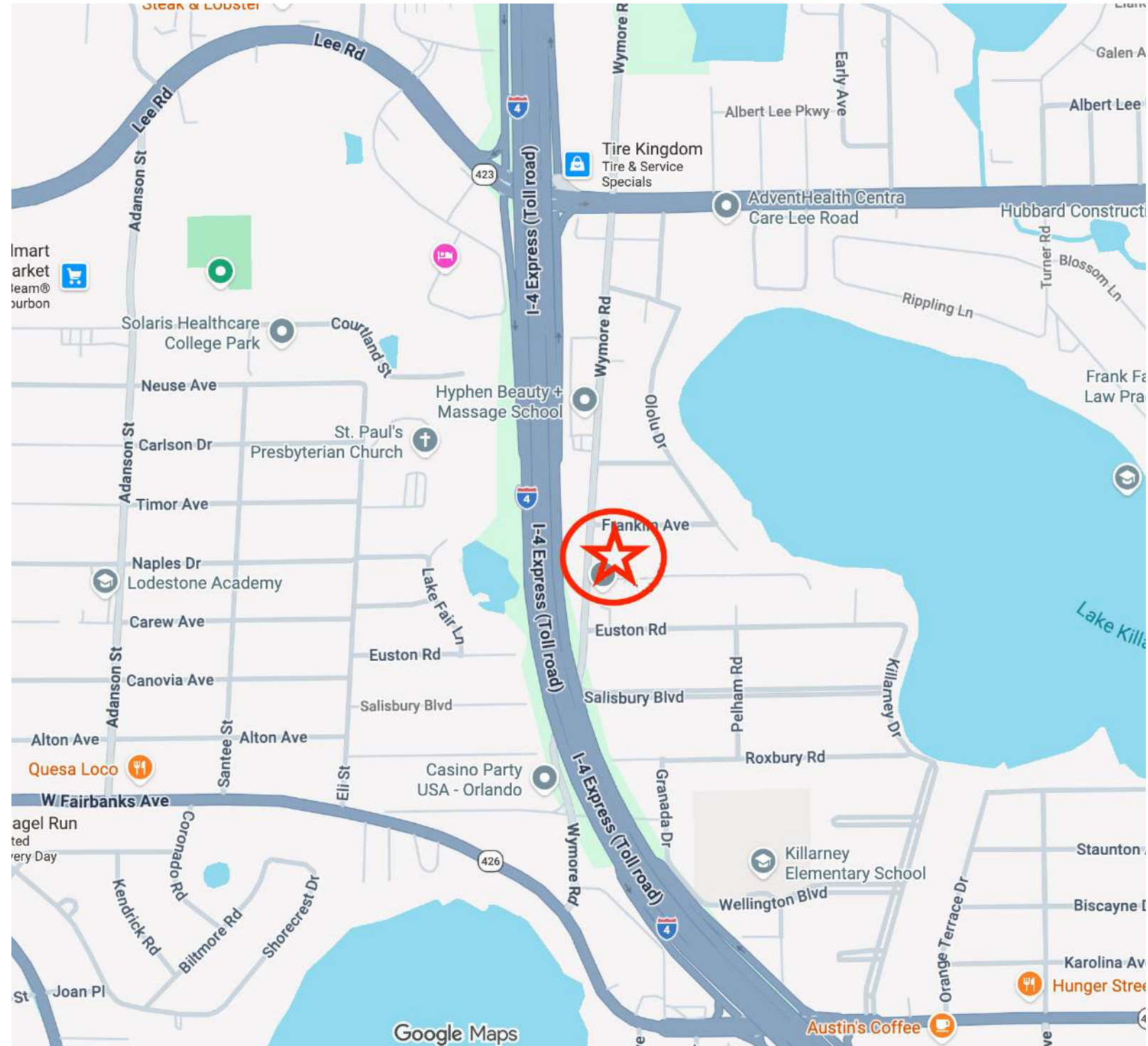
LEE ZERIVITZ, SIOR, CCIM
Managing Partner
407.644.CITY
lee@citycommercial.com

CITY COMMERCIAL
1101 Symonds Ave.
Winter Park, FL 32789
CITYCommercial.com



FOR LEASE

Location Map



LEE ZERIVITZ, SIOR, CCIM
Managing Partner
407.644.CITY
lee@citycommercial.com

CITY COMMERCIAL
1101 Symonds Ave.
Winter Park, FL 32789
CITYCommercial.com

