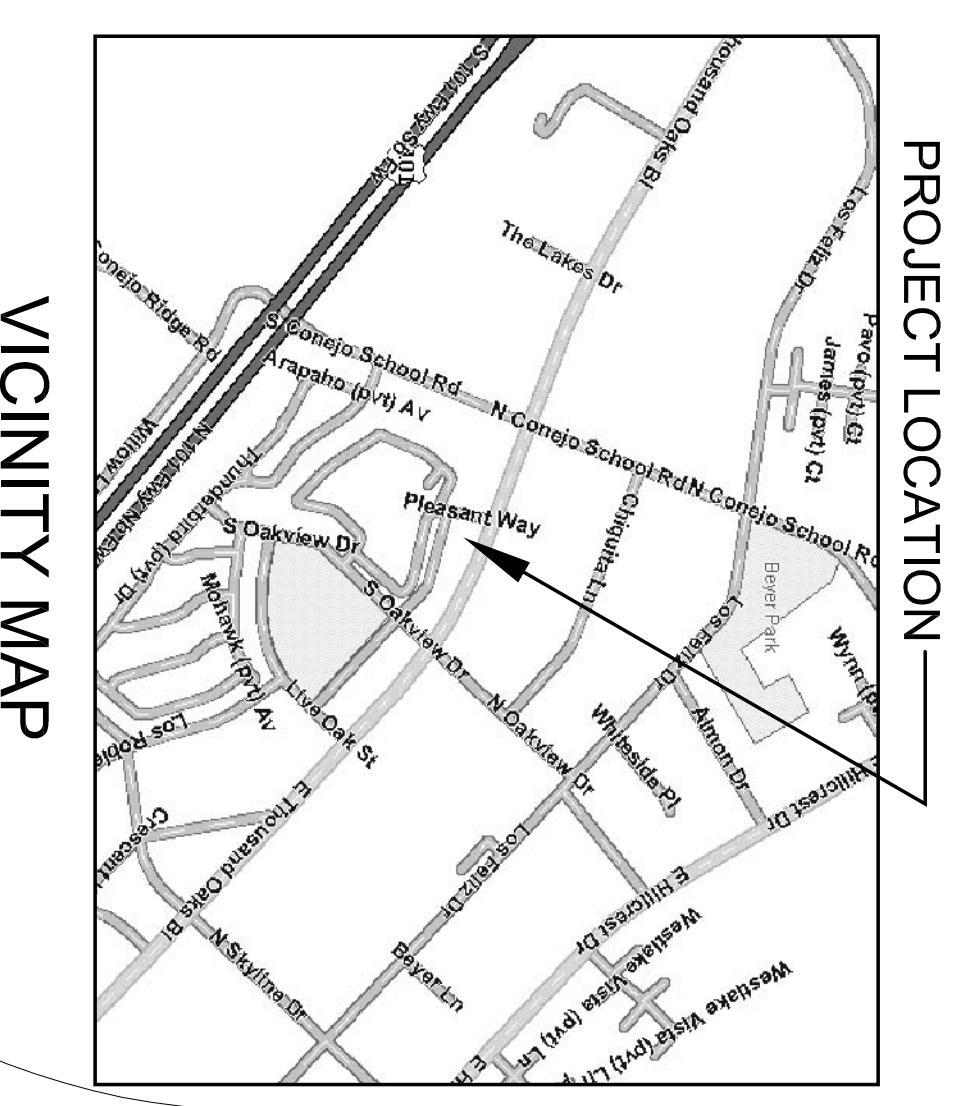
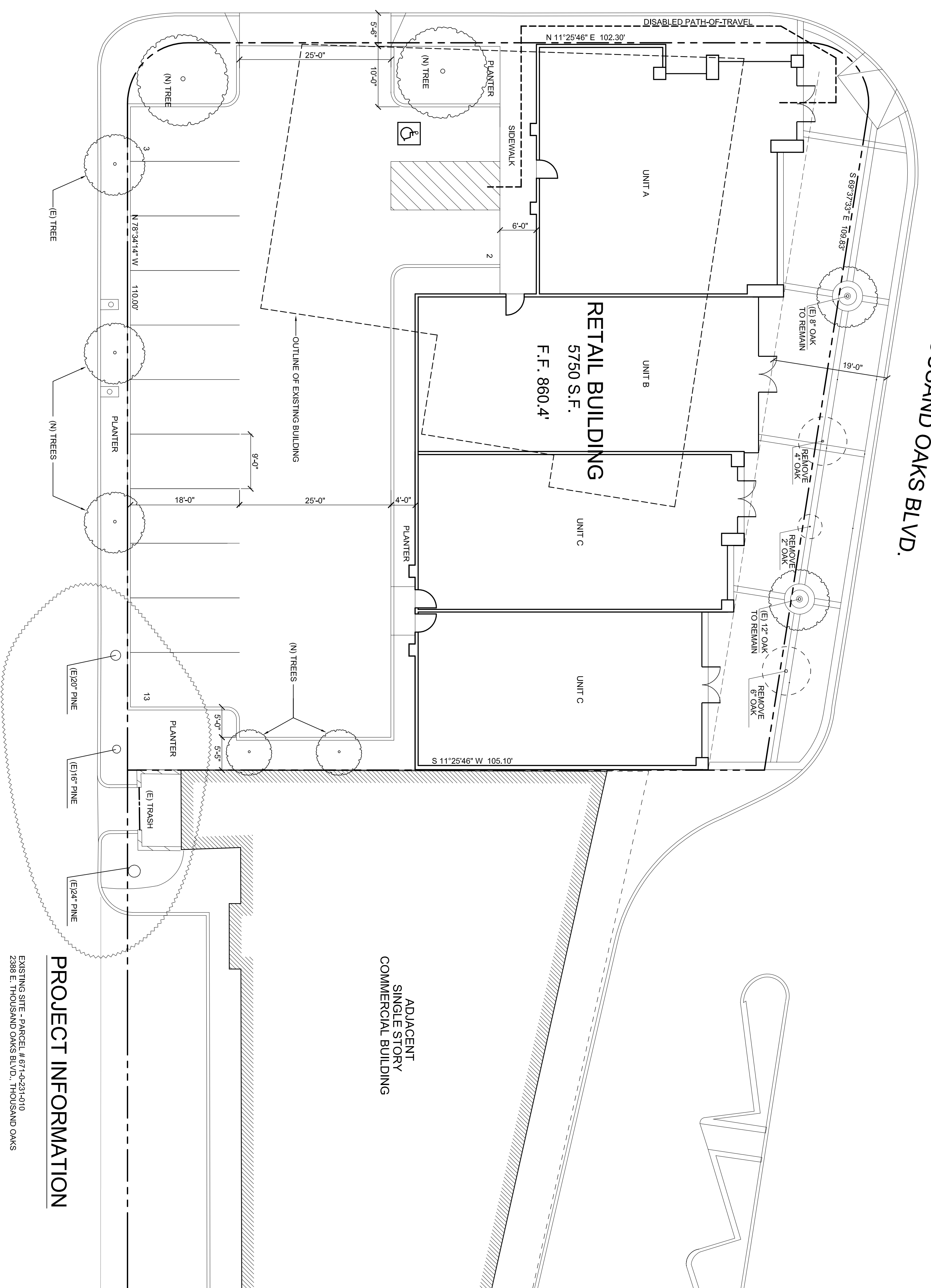


SINGLE STORY COMMERCIAL BUILDING

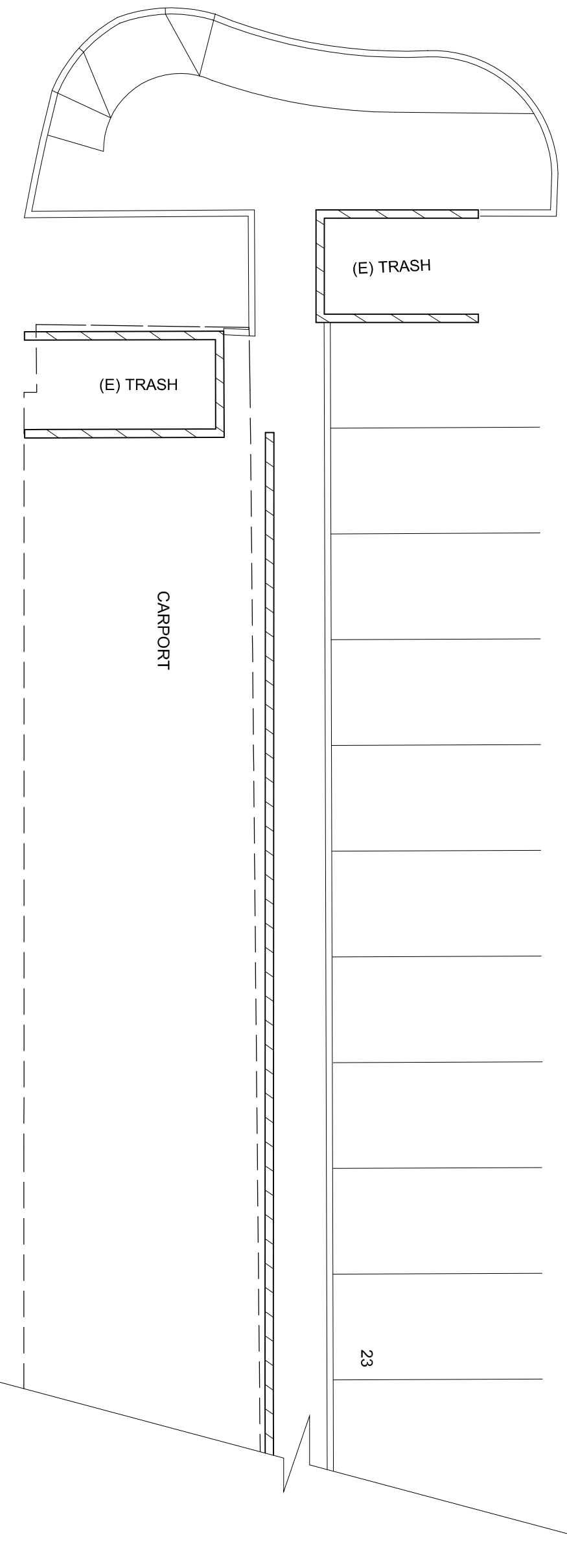
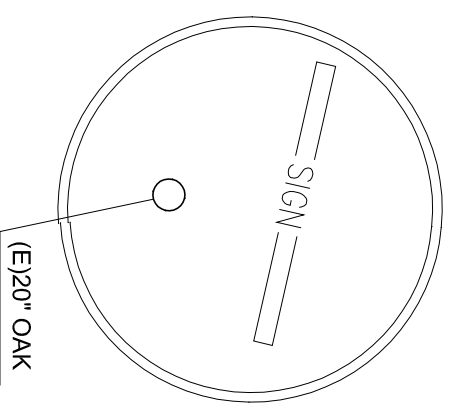


PLEASANT WAY



THOUSAND OAKS BLVD.

PLEASANT WAY



PROJECT INFORMATION

EXISTING SITE - PARCEL #671-0231-010
 2388 E. THOUSAND OAKS BLVD., THOUSAND OAKS
 ZONE C-2
 CODE 2007 CBC
 OCCUPANCY B - RETAIL

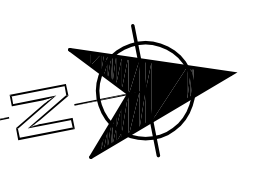
SITE AREA CALCULATIONS
 TOTAL SITE AREA 14,150 SQ. FT.
 (E) BUILDING AREA 4,251 SQ. FT.
 TOTAL PROPOSED BUILDING AREA 5,750 SQ. FT. / 40% OF SITE

PARKING REQUIRED: 23 SPACES
 REIM. (1230)
PARKING PROVIDED: 23 SPACES
 AREA - ONSITE 5105 S.F. / 36%
 STANDARD - ONSITE 12 SPACES
 STANDARD - ADJACENT OFFSITE 10 SPACES
 TOTAL PARKING PROVIDED 23 SPACES

LANDSCAPING:
 EXISTING ONSITE 0 S.F.
 PROPOSED OFFSITE 639 S.F.
 7% OF SITE

SITE PLAN

SCALE 1" = 10'-0"



REVISIONS

7/29/2010
DATE

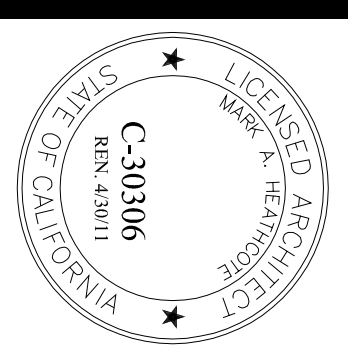
JOB NO.

OWNER
 ALI YAZDI
 2239 TOWNSGATE ROAD, SUITE 110
 THOUSAND OAKS, CALIFORNIA
 PHONE (805) 415-9861

YAZDI RETAIL BUILDING
 COMMERCIAL RETAIL BUILDING REMODEL
 APN 671-0-231-010

2388 THOUSAND OAKS BOULEVARD

THOUSAND OAKS, CALIFORNIA



MAH
 MARK A. HEATHCOTE, AIA
 ARCHITECT

4215 TIERRA REJADA #206, MOORPARK, CALIFORNIA 93021
 PHONE (805) 907-5968 EMAIL: m.heathcote@sbcglobal.net

A1

SHEET