

# FOR LEASE

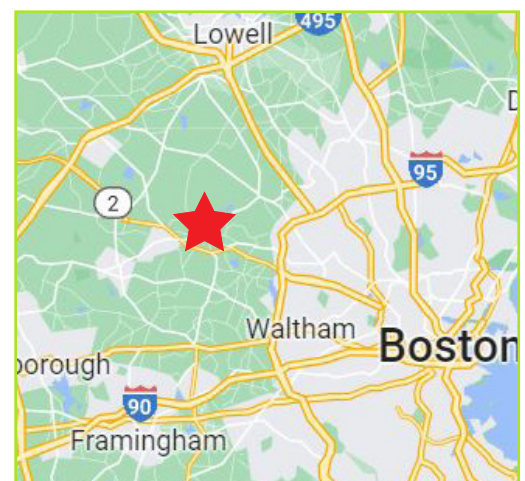
SINGLE, LARGE CORNER OFFICE



199 Sudbury Road, Concord MA

## Property Highlights:

- Large, corner office on the second floor
- \$700/month *(includes utilities)*
- Shared, surface parking spaces
- Internet Wifi available at \$90/month or purchase direct from Comcast



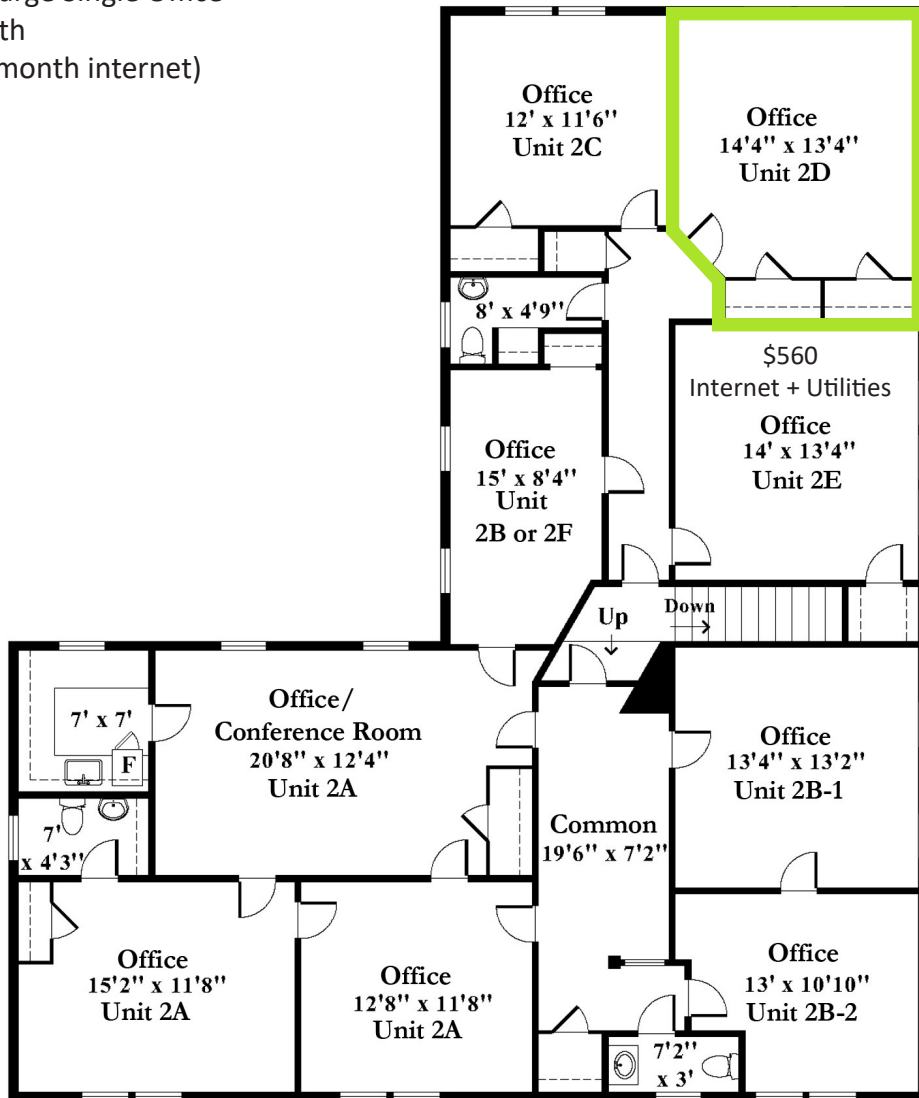
Contact:  
Tyler Spring 617.824.8602 [tspring@omniproperties.com](mailto:tspring@omniproperties.com)

 OMNI PROPERTIES

6 Lyberty Way, Westford MA 01886

# 199 Sudbury Road, Concord MA

Unit 2D - Large Single Office  
\$700/month  
(plus \$90/month internet)



**Second Level**

Contact:  
Tyler Spring 617.824.8602 [tspring@omniproperties.com](mailto:tspring@omniproperties.com)

