

FOR SALE OR LEASE

950 W 2100 S



NEWMARK

MOUNTAIN WEST

CHET BARBER  
cbarber@newmarkmw.com  
direct 385.247.4641  
[View Profile](#)

## PROPERTY DETAILS

950 West 2100 South, Salt Lake City, Utah

This fully renovated warehouse building in Salt Lake City is ideally located on 2100 South in Salt Lake City. With six grade level doors, heavy 3 phase power, a new roof, 17 designated parking stalls (which have just been seal coated and re-stripped), high ceilings, recently renovated office space, and floor drains, this building is a terrific investment or owner user purchase. The current owner has spared no expense in updating and upgrading both the interior and exterior of the property, which has been zoned and used for warehouse and automotive repair.

- 12,106 SF
- Heavy 3 Phase Power
- Fully Renovated (2025)
- New Roof and Sealed Parking (2026)
- 6 Grade Level Doors
- Floor Drains
- Office Space is in Excellent Condition
- Asking purchase price: \$2,750,000
- Monthly lease amount: \$12,750 NNN

## 2025 DEMOS



### EST. POPULATION

1 MILE » 4,785  
3 MILE » 137,714  
5 MILE » 397,361



### EST. HOUSEHOLDS

1 MILE » 1,352  
3 MILE » 56,887  
5 MILE » 166,375



### EST. AVERAGE HH INCOME

1 MILE » \$85,519  
3 MILE » \$96,470  
5 MILE » \$110,002

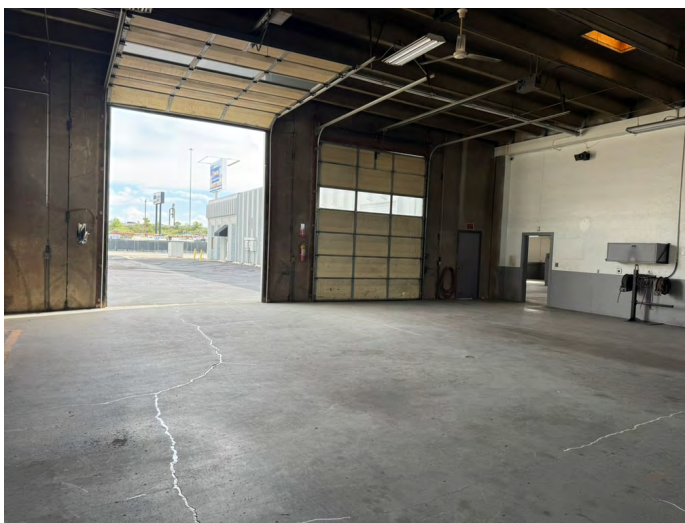
FULL SERVICE  
COMMERCIAL REAL ESTATE  
312 East South Temple  
Salt Lake City, Utah 84111  
Office 801.456.8800  
[www.newmarkmw.com](http://www.newmarkmw.com)



# NEWMARK

 MOUNTAIN WEST

**CHET BARBER**  
cbarber@newmarkmw.com  
direct 385.247.4641  
[View Profile](#)



**FULL SERVICE  
COMMERCIAL REAL ESTATE**  
312 East South Temple  
Salt Lake City, Utah 84111  
Office 801.456.8800  
[www.newmarkmw.com](http://www.newmarkmw.com)



# NEWMARK

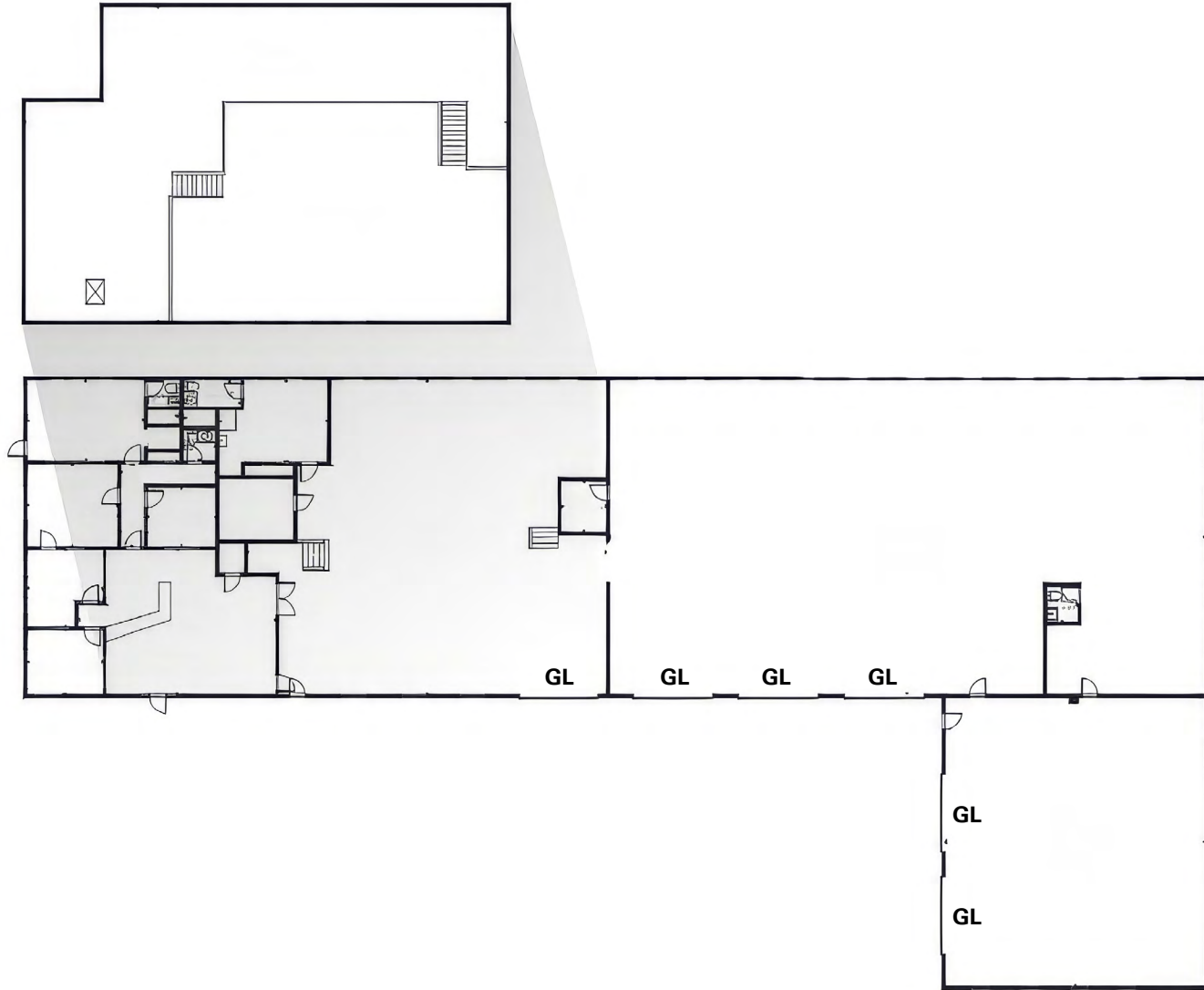
 MOUNTAIN WEST

**CHET BARBER**  
cbarber@newmarkmw.com  
direct 385.247.4641  
[View Profile](#)

**FULL SERVICE  
COMMERCIAL REAL ESTATE**  
312 East South Temple  
Salt Lake City, Utah 84111  
Office 801.456.8800  
[www.newmarkmw.com](http://www.newmarkmw.com)

# FLOOR PLAN

950 W 2100 S



**NEWMARK**

**MOUNTAIN WEST**

**CHET BARBER**  
cbarber@newmarkmw.com  
direct 385.247.4641  
[View Profile](#)

**FULL SERVICE  
COMMERCIAL REAL ESTATE**  
312 East South Temple  
Salt Lake City, Utah 84111  
Office 801.456.8800  
[www.newmarkmw.com](http://www.newmarkmw.com)



**NEWMARK**

**MOUNTAIN WEST**

**CHET BARBER**  
 cbarber@newmarkmw.com  
 direct 385.247.4641  
[View Profile](#)

**FULL SERVICE  
 COMMERCIAL REAL ESTATE**  
 312 East South Temple  
 Salt Lake City, Utah 84111  
 Office 801.456.8800  
[www.newmarkmw.com](http://www.newmarkmw.com)