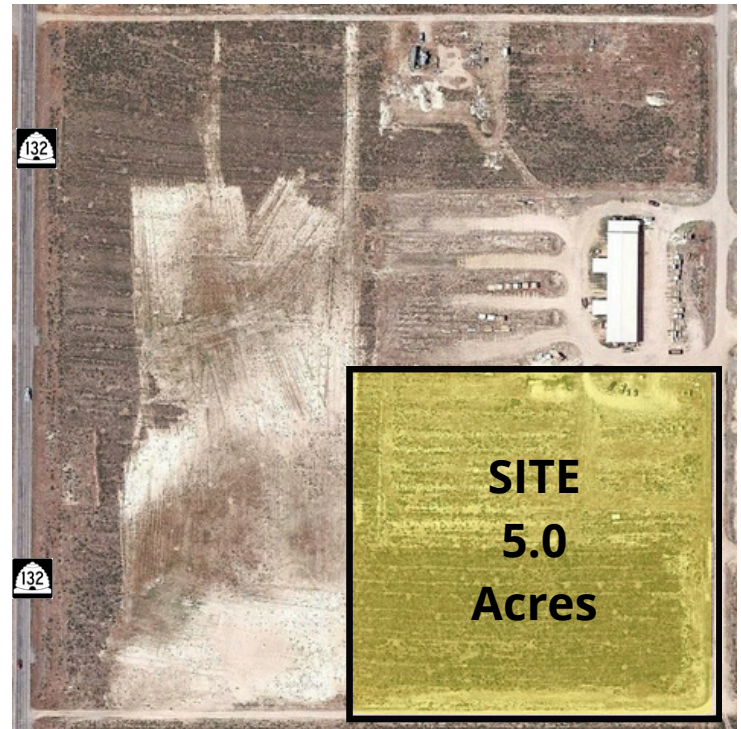




PROPERTY INFORMATION

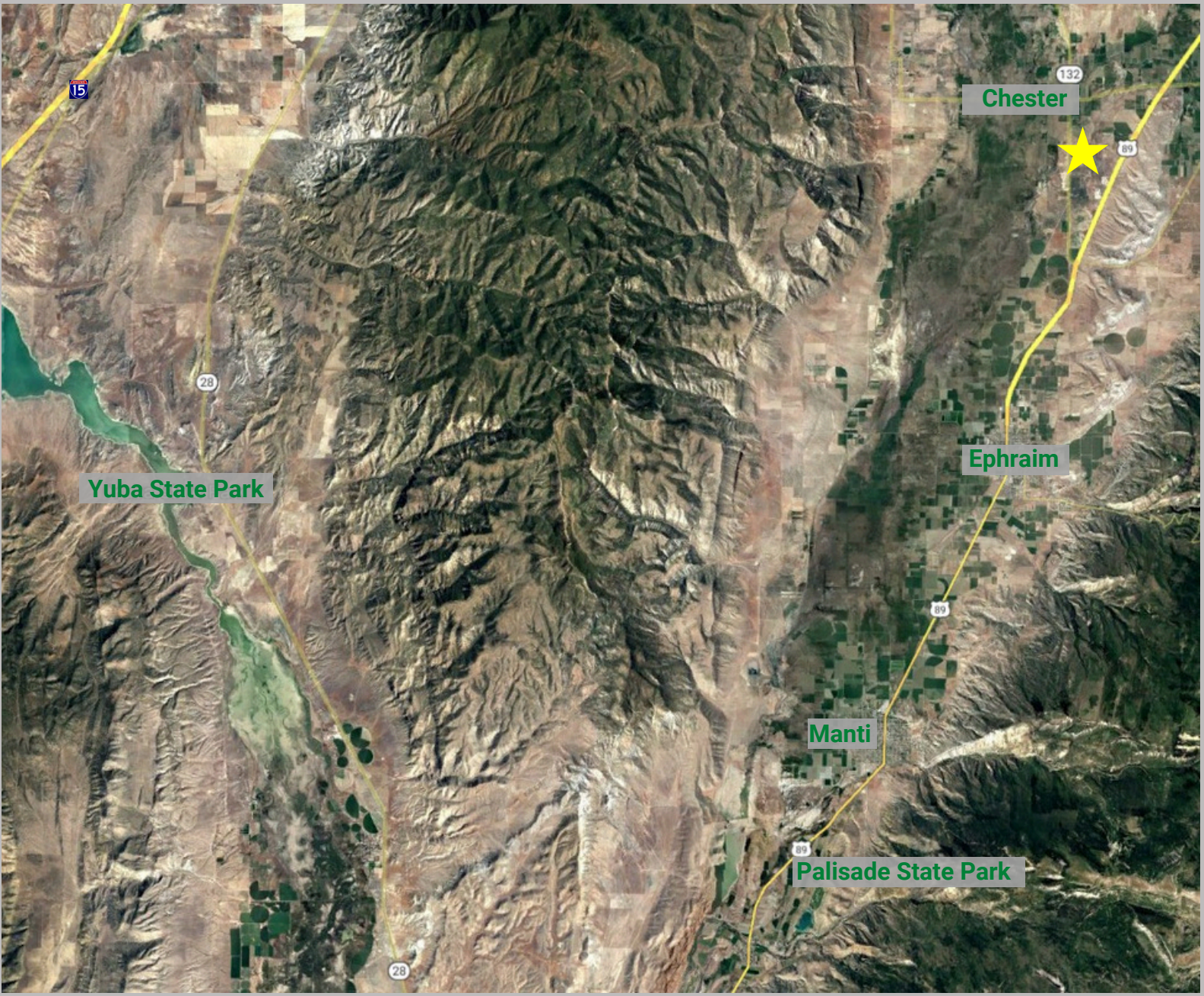
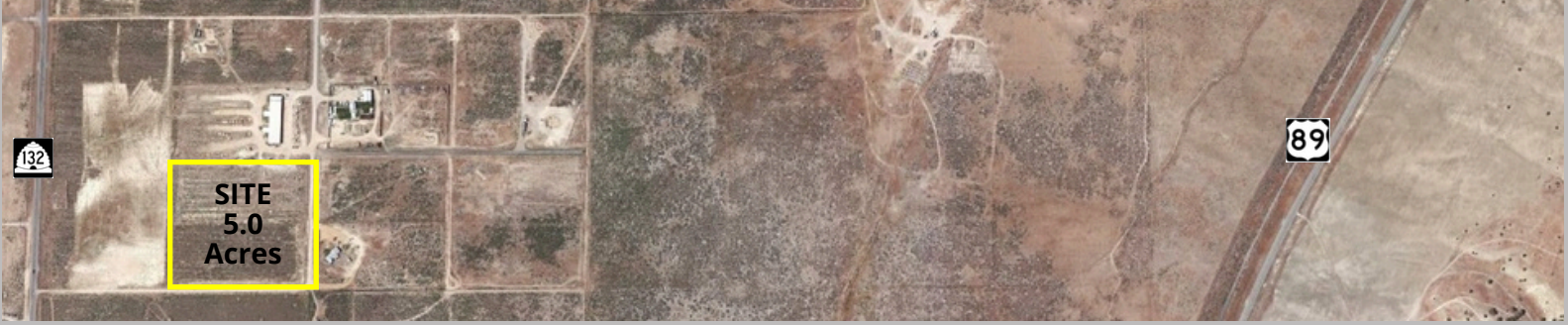
- Site Size: 5.0 Acres
- Industrial Zoning
- Located in the Historic District of Sanpete County
- Nearby Access to Hwy 89

PURCHASE PRICE REDUCED!
from ~~\$179,000.00~~ to \$165,000.00





12585 NORTH 4250 EAST, CHESTER, UTAH 84623



This information is given with the understanding that all negotiations and/or real estate activity related to the property described above shall be conducted through this cRc Nationwide office. The above information while not guaranteed, was obtained from sources we believe to be reliable.