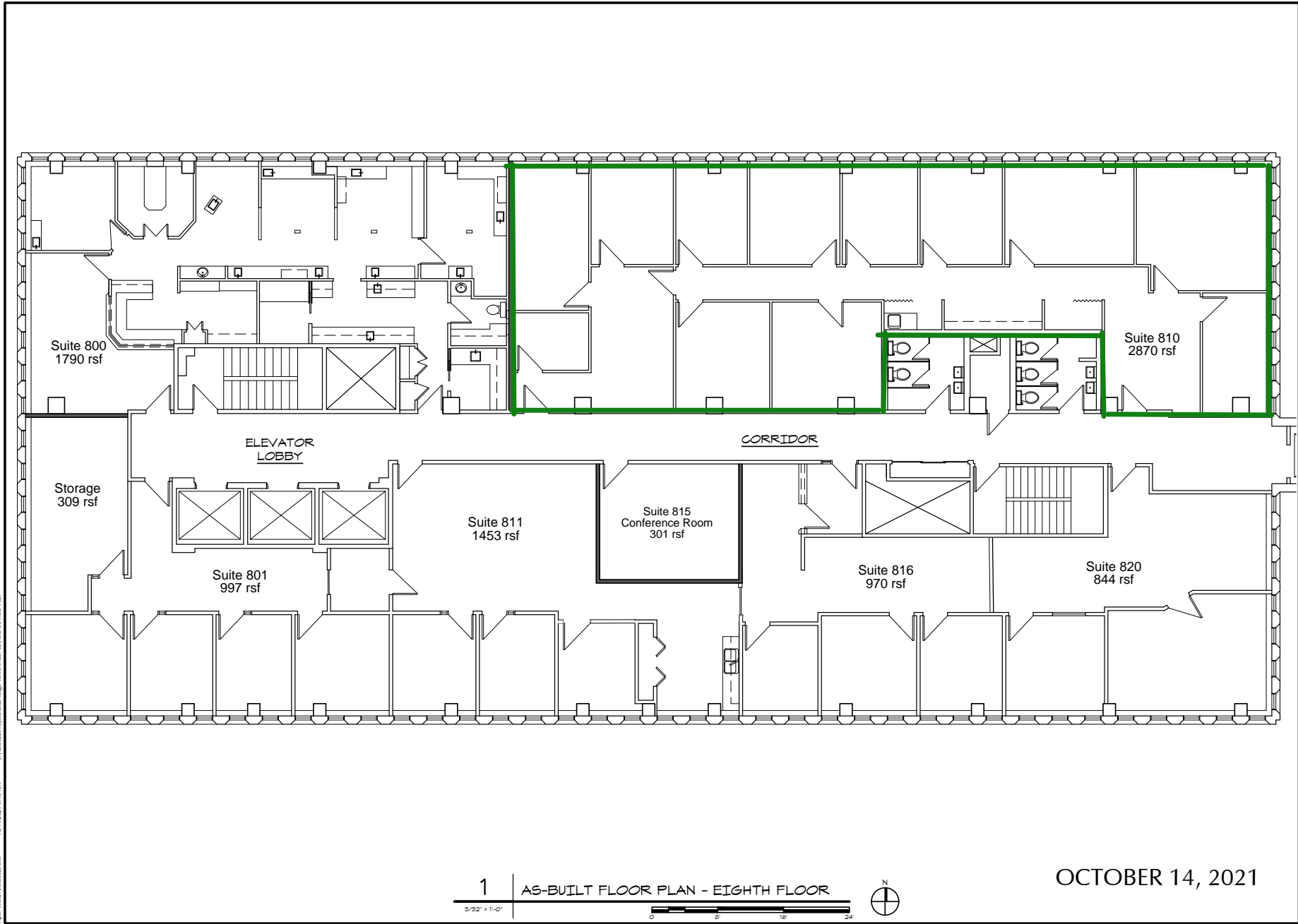


Piper-Wind Architects, Inc. 101 E 202nd St, Suite 100, Overland Park, KS 66209
101 E 202nd St, Suite 100, Overland Park, KS 66209



ARCHITECT
PIPER-WIND ARCHITECTS, Inc.
2121 CENTRAL STREET, SUITE 143
KANSAS CITY, MISSOURI 64108
TEL: (816) 474-3050
FAX: (816) 474-3051

BLUE RIDGE TOWER
AS-BUILT FLOOR PLANS
4240 BLUE RIDGE BOULEVARD, KANSAS CITY, MISSOURI 64133

NOT FOR
CONSTRUCTION

PROJECT NO.	00590
DATE	10/14/2021
DRAWN BY	ADP
CHECKED BY	ADP
CREATED BY	ADP
REVISED DATE	DESCRIPTION

SHEET TITLE & NUMBER
EIGHTH FLOOR
PLAN

COPYRIGHT © 2021
PIPER-WIND ARCHITECTS, Inc.

A-108

1 AS-BUILT FLOOR PLAN - EIGHTH FLOOR



OCTOBER 14, 2021