



For Lease

Full floor lease opportunities

JLL is pleased to present the 2nd and 3rd floors of 27 Masonic Street, New London, for lease. Full floors and contiguous for a total of 12,700 s.f. This is a well located, beautiful and historical property.

Building features and benefits include:

- 45,424 s.f. historical building
- Situated on a corner lot with great visibility
- Full floor availability; 6,200 s.f. on the 2nd floor & 6,500 s.f. on the 3rd floor
- Conveniently located in the center of town, walkable to a variety of amenities and the commuter line

**27 Masonic Street
New London, CT**

Chris Ostop
+1 860 702 2835
Christopher.ostop@am.jll.com

DISCLAIMER

Although information has been obtained from sources deemed reliable, neither Owner nor JLL makes any guarantees, warranties or representations, express or implied, as to the completeness or accuracy as to the information contained herein. Any projections, opinions, assumptions or estimates used are for example only. There may be differences between projected and actual results, and those differences may be material. The Property may be withdrawn without notice. Neither Owner nor JLL accepts any liability for any loss or damage suffered by any party resulting from reliance on this information. If the recipient of this information has signed a confidentiality agreement regarding this matter, this information is subject to the terms of that agreement. ©2018 Jones Lang LaSalle IP, Inc. All rights reserved.

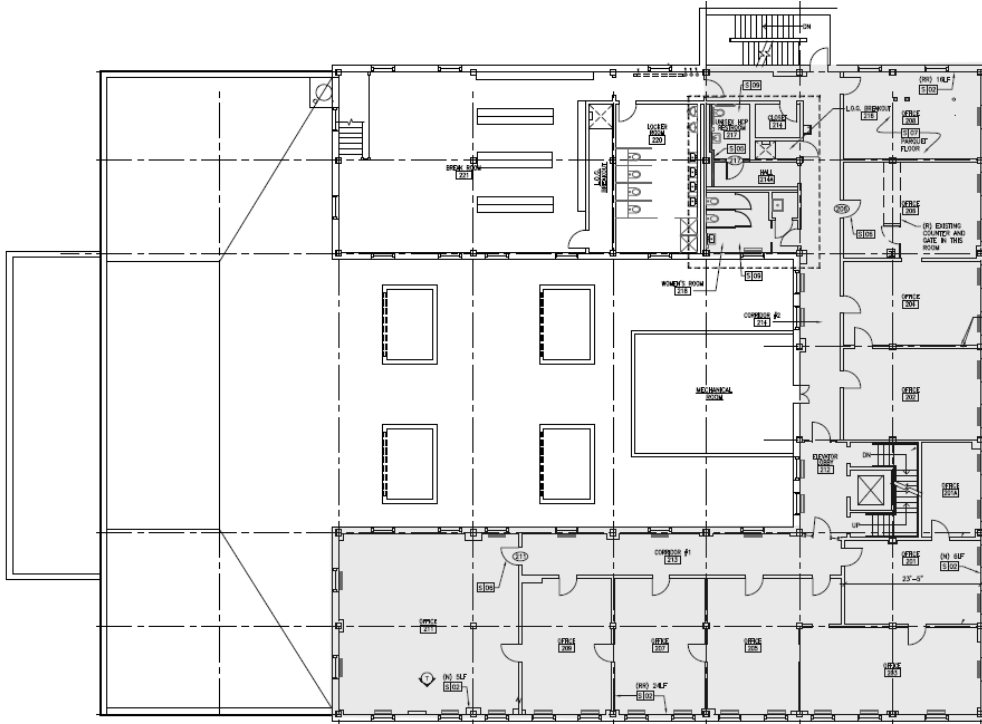




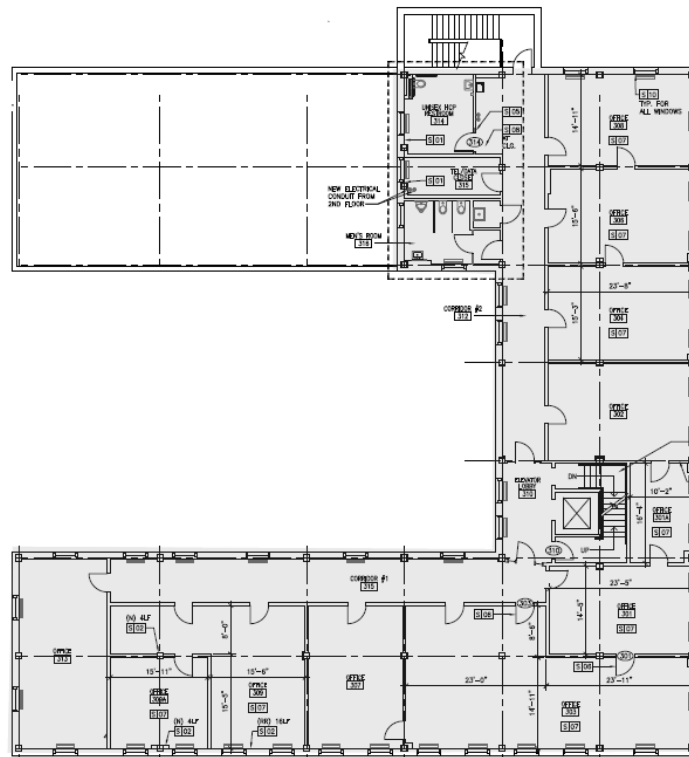
Property Specifications

Building Address:	27 Masonic Street, New London, CT
Building Size:	45,424 s.f. in three levels
Land Area:	1.20 acres
Year Built:	1933 (Historical property)
Construction:	Masonry
Zoning:	CBD2
Parking:	20 surface spaces
Loading:	Eight (8) loading docks bays
Public Transportation:	One minute drive from the New London Commuter Rail
Walkable Amenities:	Restaurants, banking, lodging, parking arts & entertainment

2nd Floor Plan - 6,200* s.f.



3rd Floor Plan - 6,500* s.f.



*Contiguous for a total of 12,700 s.f.

Location Map



27 Masonic Street
New London, CT

Chris Ostop
+1 860 702 2835
Christopher.ostop@am.jll.com



DISCLAIMER

Although information has been obtained from sources deemed reliable, neither Owner nor JLL makes any guarantees, warranties or representations, express or implied, as to the completeness or accuracy as to the information contained herein. Any projections, opinions, assumptions or estimates used are for example only. There may be differences between projected and actual results, and those differences may be material. The Property may be withdrawn without notice. Neither Owner nor JLL accepts any liability for any loss or damage suffered by any party resulting from reliance on this information. If the recipient of this information has signed a confidentiality agreement regarding this matter, this information is subject to the terms of that agreement. ©2018 Jones Lang LaSalle IP, Inc. All rights reserved.

