



PRIME OFFICE  
SPACE FOR  
LEASE

FOR LEASE

**19 HENNIKER ST ,  
CONCORD, NH 03301**

2,500 +/- SF Available

# PROPERTY INFORMATION



2,500 +/- SF AVAILABLE FOR LEASE  
**19 HENNIKER ST, CONCORD, NH 03301**  
\$14.00 PSF MG

## DESCRIPTION:

Available for lease is a 2,500 +/- square foot commercial unit in Concord, New Hampshire. The space is currently occupied by the landlord and will be professionally demised to create the available 2,500 square foot unit, offering a clean and efficient layout suitable for a variety of commercial uses.

The property is conveniently located near Concord Municipal Airport and is surrounded by numerous established businesses, providing strong commercial synergy and accessibility. Its location offers easy access to major roadways and services, making it well-positioned for businesses seeking a functional space in a proven Concord market. Additional details regarding build-out specifications and delivery condition can be provided upon request.

# DEMOGRAPHICS



## 2025 SUMMARY

2025 SUMMARY	2 MILE	5 MILE	10 MILE
Population	9,366	40,309	90,323
Households	4,533	17,247	37,703
Families	2,370	9,923	23,789
Avg HH Size	2.03	2.19	2.30
Median Age	44.4	43.9	43.8
Median HH Income	\$67,244	\$86,342	\$94,920
Avg HH Income	\$80,823	\$109,492	\$119,503

### BUSINESSES (10 MILE)



**5,245**

TOTAL BUSINESSES



**67,506**

TOTAL EMPLOYEES

### INCOME (10 MILE)



**\$94,920**

MEDIAN HH INCOME



**\$50,103**

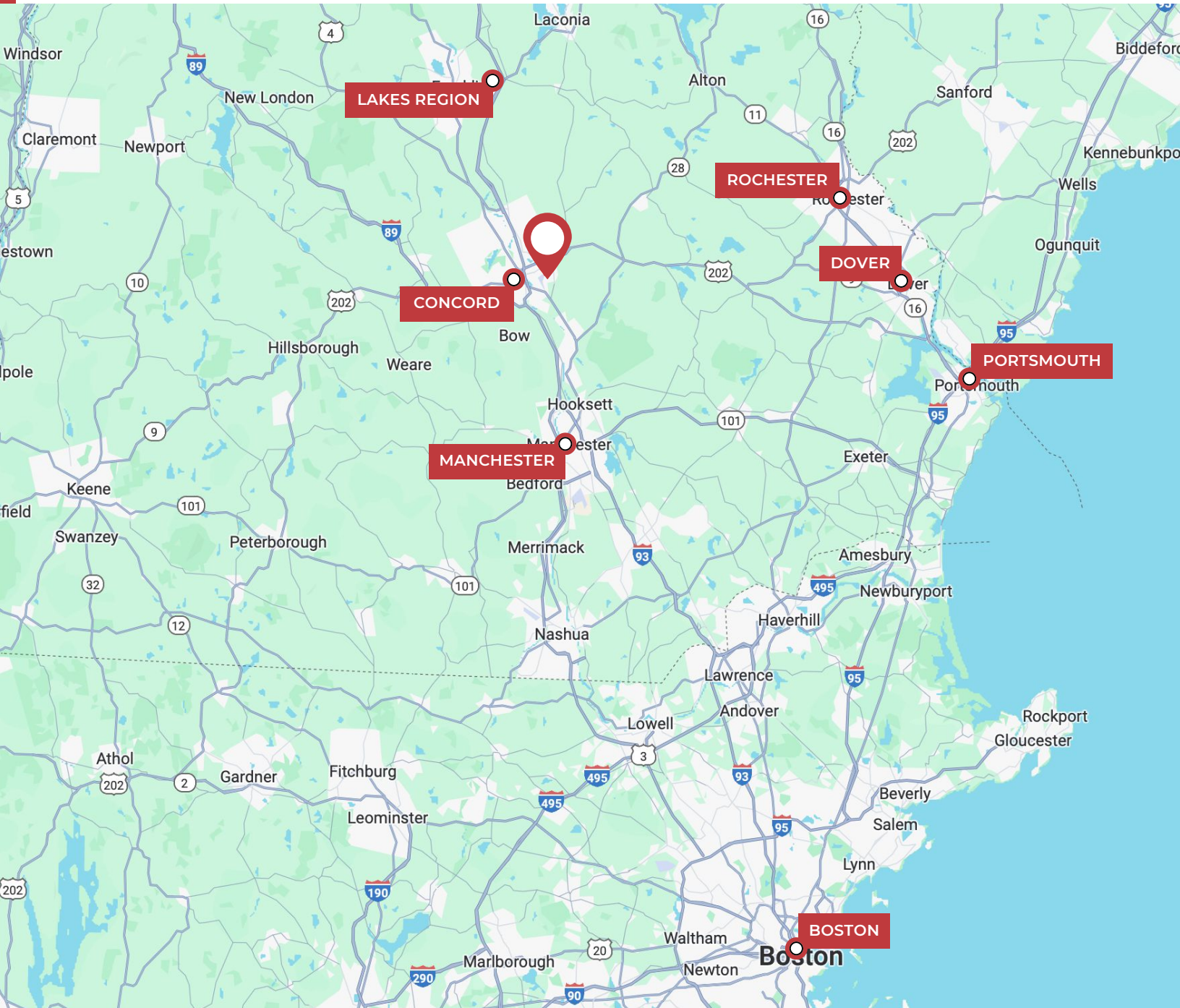
PER CAPITA INCOME



**\$311,894**

MEDIAN NET WORTH

# MAP LOCATOR



## DRIVE TIMES TO:

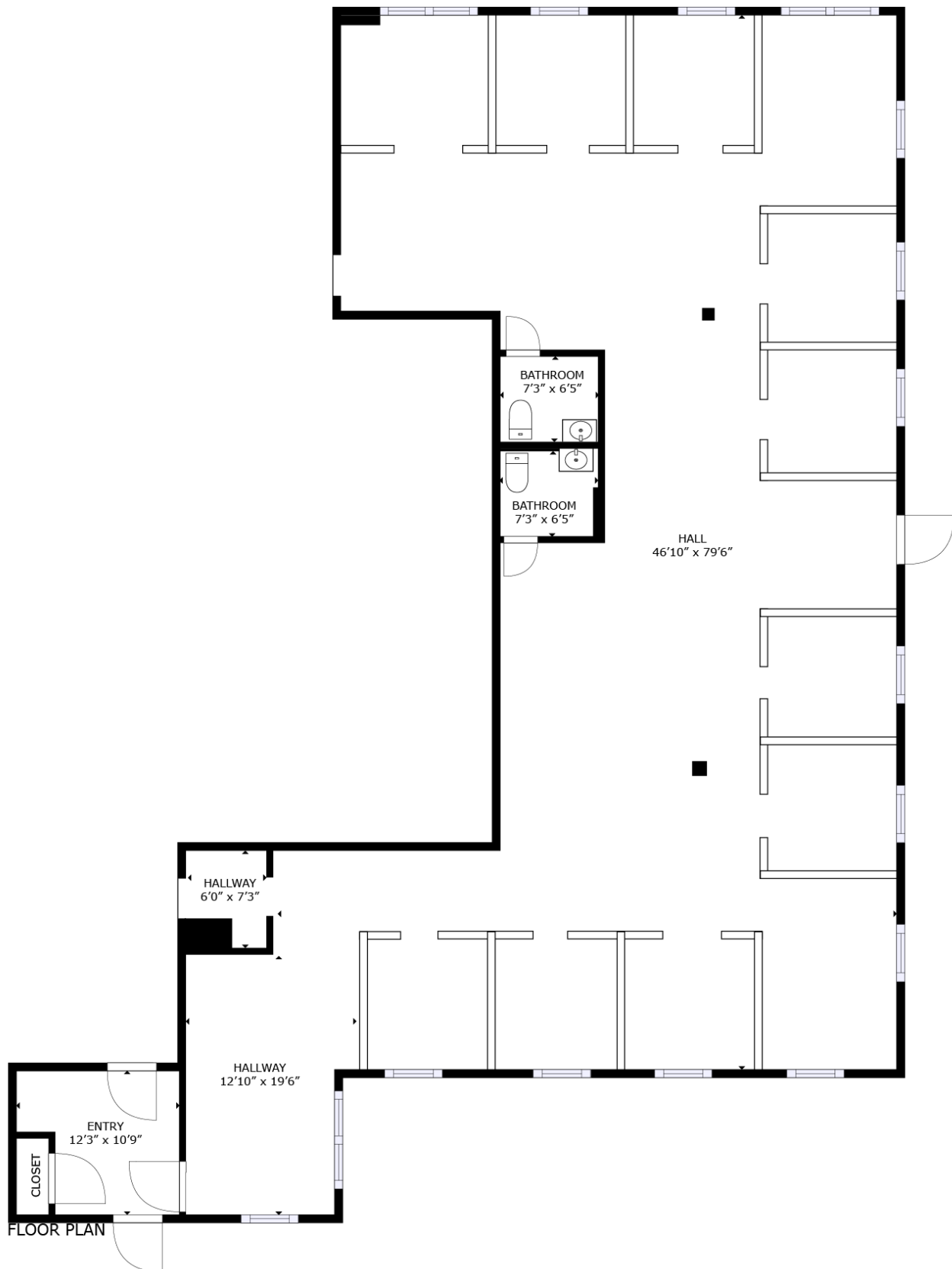
<b>Manchester, NH</b>	26 mins	<b>Lakes Region, NH</b>	29 mins
<b>Concord, NH</b>	11 mins	<b>Dover, NH</b>	56 mins
<b>Boston, MA</b>	1 h 13 mins	<b>Portsmouth, NH</b>	1 h 3 mins

# PHOTOS



[Take A Virtual Tour!](#)

# FLOOR PLAN



# CONFIDENTIALITY & DISCLAIMER

THIS OFFERING IS SUBJECT TO THE FOLLOWING ASSUMPTIONS AND LIMITING CONDITIONS:

NAI Norwood Group assumes no responsibility for matter legal in character, nor do we render any opinion as to the title which is assumed to be good.

We believe the information furnished to us by the owners and others is reliable, but we assume no responsibility for its accuracy.

Buyers should not rely on this information, and Buyers should make their own investigation of any and all aspects.

---

PRESENTED BY:

---

**MATT ROBINSON**

**ADVISOR**

tel (603) 637-2247

mobile (603) 714-3426

[mrobinson@nainorwoodgroup.com](mailto:mrobinson@nainorwoodgroup.com)

**CAMDEN STEADY**

**ADVISOR**

tel (603) 668-7000

mobile (603) 491-7474

[ctsteady@nainorwoodgroup.com](mailto:ctsteady@nainorwoodgroup.com)



**NAI Norwood Group**  
116 South River Road  
Bedford, NH 03110  
[www.nainorwoodgroup.com](http://www.nainorwoodgroup.com)