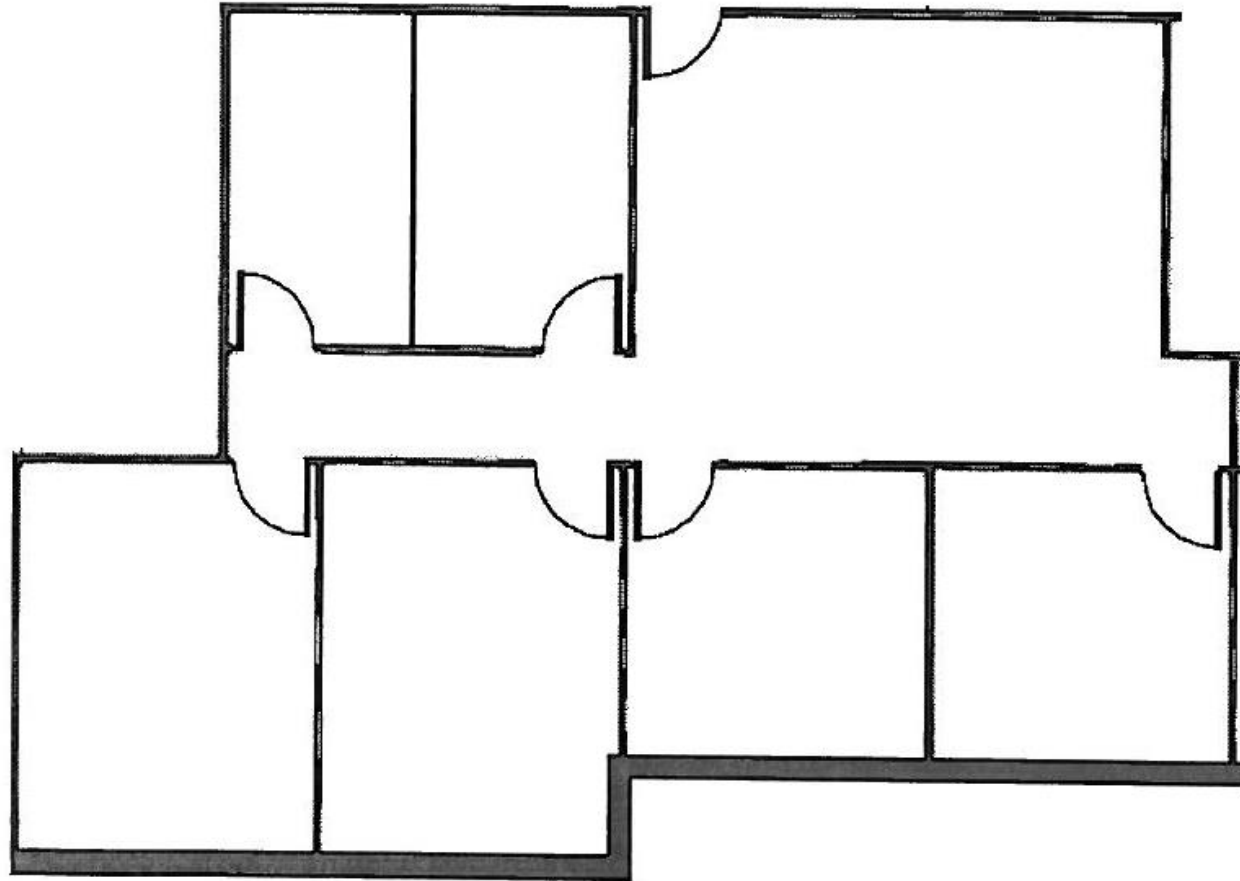


520 Central Pkwy East, Suite 101

NORTH CENTRAL PARKWAY

Plano, Texas

± 1,567 RSF



For Additional Information, Contact:

Bill Rudd
972.422.4515

 **IHAGGARD**
PROPERTY GROUP, LTD.

No warranty or representation, express or implied, is made as to the accuracy of the information contained herein, and same is submitted subject to errors, omissions, change of price, rental or other conditions, withdrawal without notice, and to any special listing conditions, imposed by our principals or members.