

1190 & 1250 NORMAN AVE
SANTA CLARA

2 Industrial Units For Lease on Norman Ave in Santa Clara
1252 Norman: ±1,440 SF
1262 Norman: ±1,440 SF



OVERVIEW



ASKING RENT: \$2.50 SF NNN

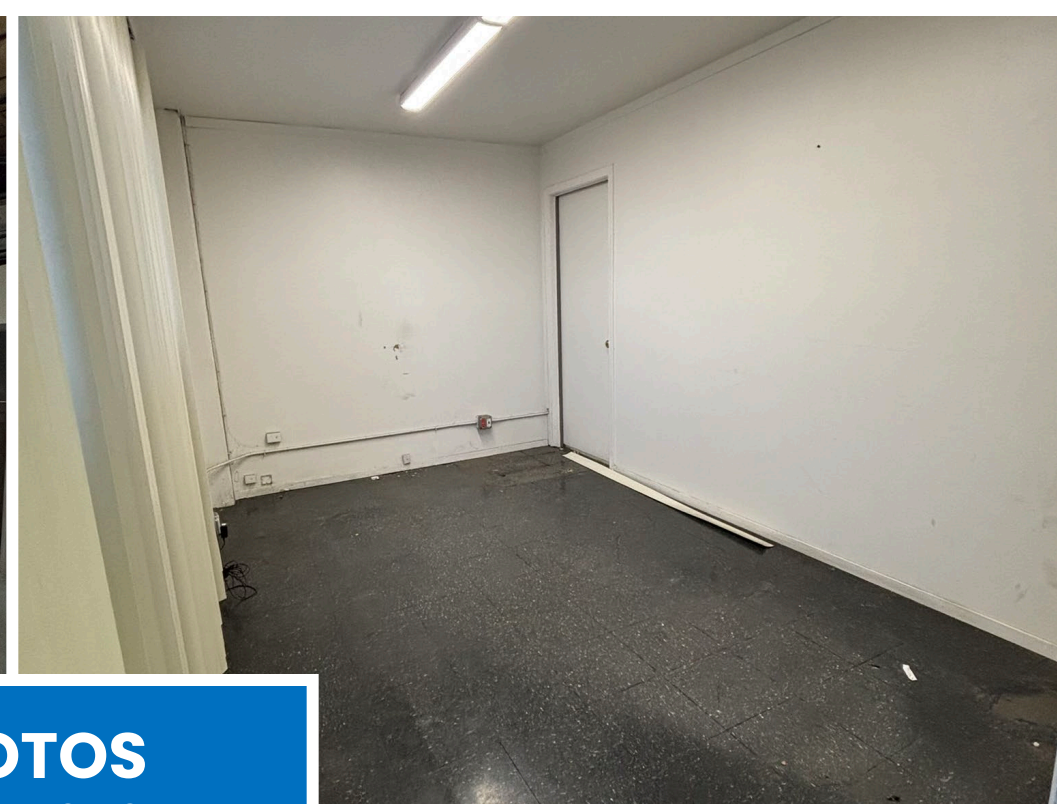
UNIT SIZE: Two ±1,440 SF

OF UNITS FOR LEASE: 2

CLEAR HEIGHT: 13'

OF ROLL UP DOORS: 1 Per Unit

ZONING & GENERAL PLAN: Low Intensity Office/R&D



PHOTOS
UNIT: 1252
SIZE: ±1,440 SF



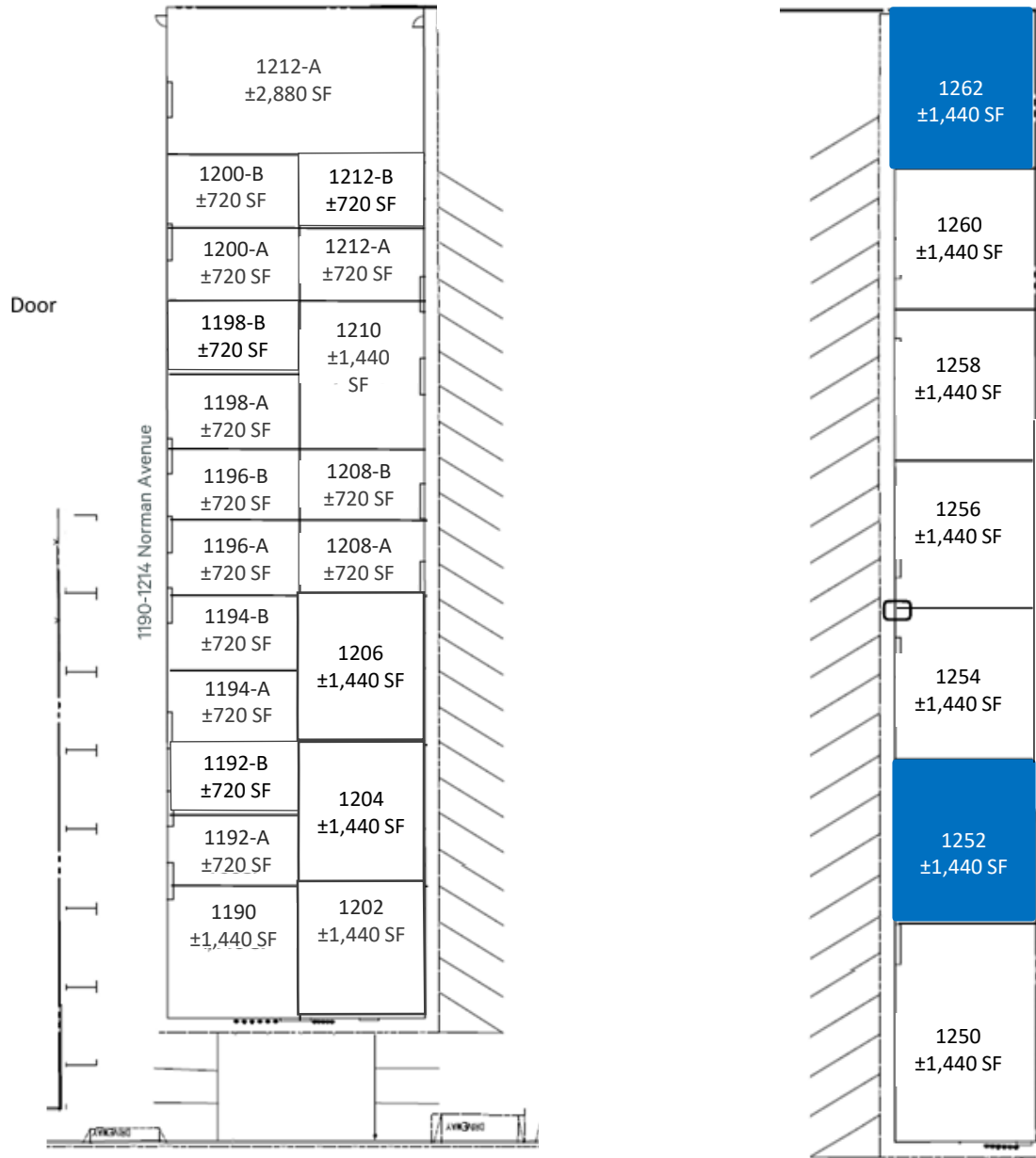


PHOTOS
UNIT: 1262
SIZE: ±1,440 SF



SITE PLAN & VACANT UNITS

UNITS IN BLUE
ARE VACANT



AERIAL PHOTO



DEMOGRAPHICS

2026 SUMMARY

1-MILE

5-MILE

10-MILE

Population	14,724	455,987	1,453,420
Households	5,092	169,365	498,869
Average Household Size	2.7	2.6	2.8
Owner Occupied Housing Units	1,881	64,939	238,186
Renter Occupied Housing Units	3,056	98,957	242,573
Median Age	36.2	36.7	38.7
Median Household Income	\$173,786	\$152,084	\$145,677
Average Household Income	\$187,439	\$175,066	\$171,485



1190 & 1250 NORMAN AVE SANTA CLARA

DAVID TAXIN
Partner
Lic. #00983163
408.966.5919
dtaxin@moinc.net

JEREMY AWDISHO
Vice President
Lic. #02064232
650.814.4510
jeremy@moinc.net

BOBBY FACCHINO
Senior Associate
Lic. #02178873
408.318.0623
bobby@moinc.net



DAVID TAXIN
MEACHAM OPPENHEIMER **GROUP**