

Beautiful Creative Space for Lease / Arts District / DTLA

**BROKER BONUS**

For 3+ Year Deals.

THE *Huntsman*



**1330 S. SANTA FE AVE.**

CALEB HODGE / 310.430.5025 / Caleb.Hodge@kwprealestate.com / DRE #02053613

KWPREALSTATE.COM

**SUITE 300:**  
**±3,663 SF**

**SUITE 101:**  
**±2,512 SF**

**SUITE 102:**  
**±2,347 SF**

# Available



SUITE 101 - OFFICE / RETAIL / FLEX

SIZE: ±2,512 SF

FEATURES: Two (2) roll-up doors, kitchenette, private restroom

SUITE 102 - OFFICE / FLEX

SIZE: ±2,347 SF SF

FEATURES: Kitchenette, private restroom, conference room, beautiful finishes with abundance of natural light

SUITE 300 - OFFICE

SIZE: ±3,663 SF

FEATURES: Kitchenette, private restroom, 2 private offices, conference room, with hardwood floors and brick walls

OFFICE RENT

Negotiable

PARKING

Abundance of on-site secure parking

# Features

---

Major property renovations completed

Three stories of upgraded creative office

Hardwood floors, original refurbished brick walls, and high ceilings

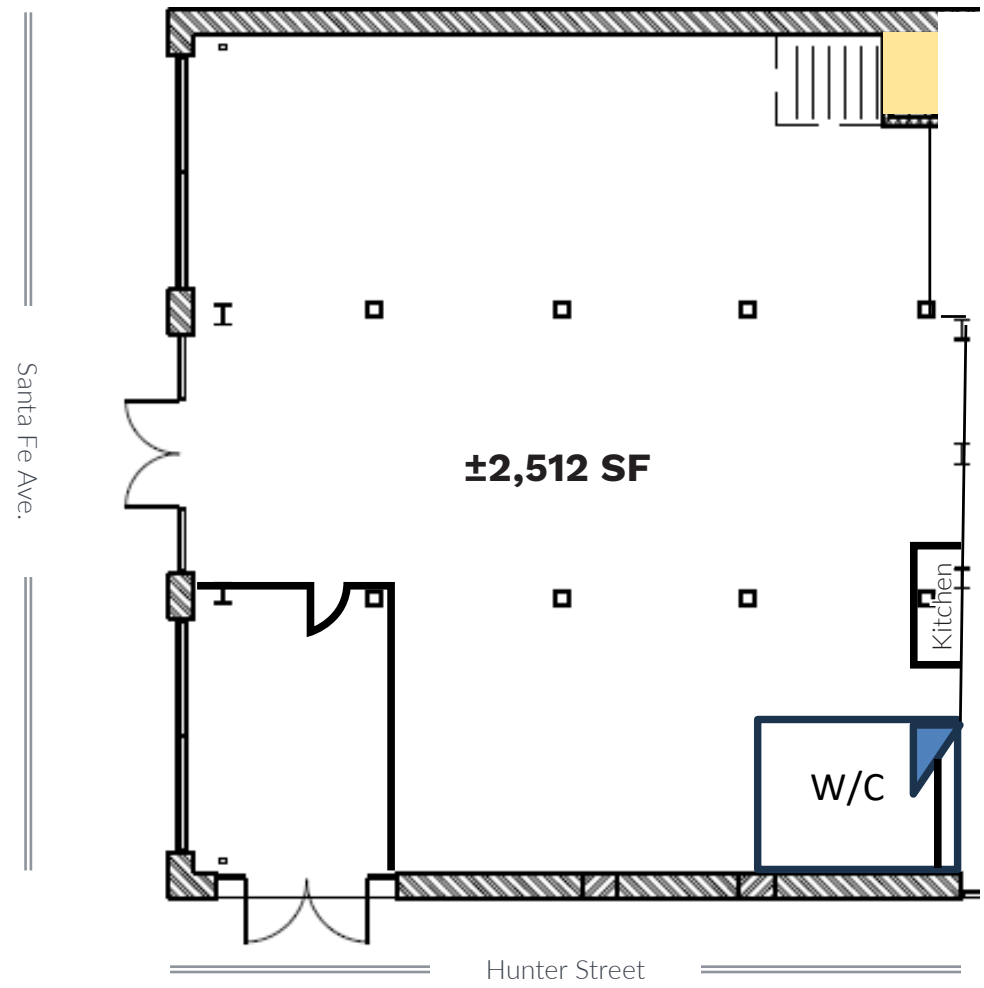
Incredible views of DTLA skyline

Free street parking and a 3/1,000 SF parking ratio in adjacent secured parking lot

3 to 7 year lease terms

Down the street from SoHo Warehouse, Warner Music, and many retail amenities

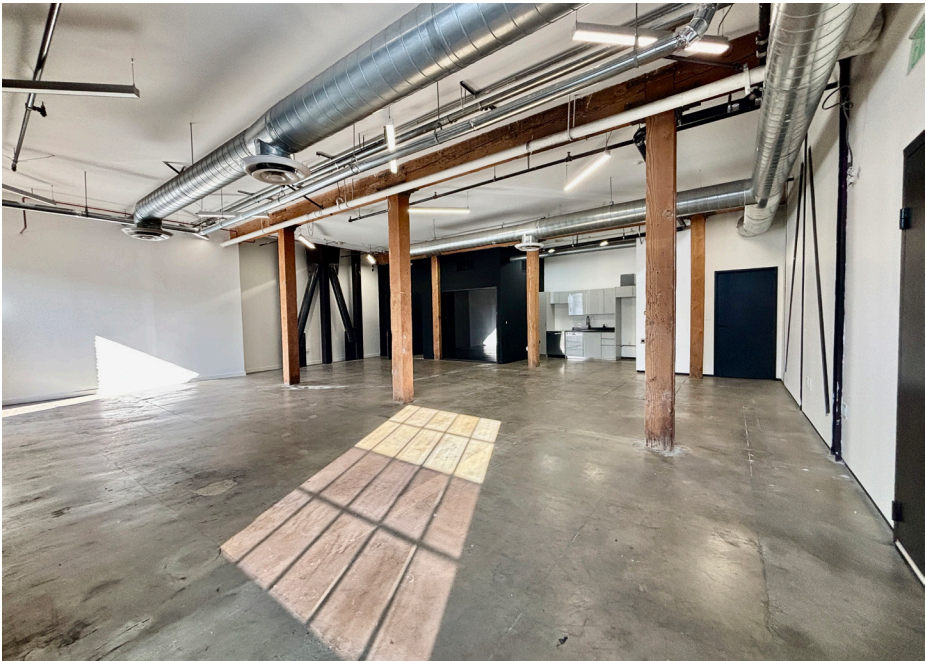
# Suite 101 - Office / Retail / Flex



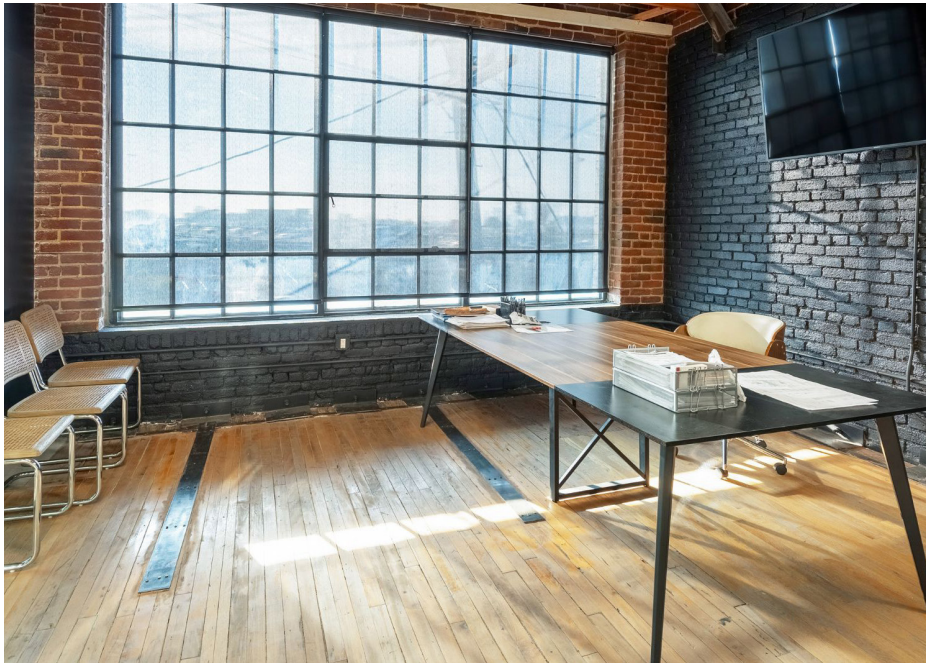
FLOOR PLAN NOT DRAWN TO SCALE



# Suite 102 - Office / Flex



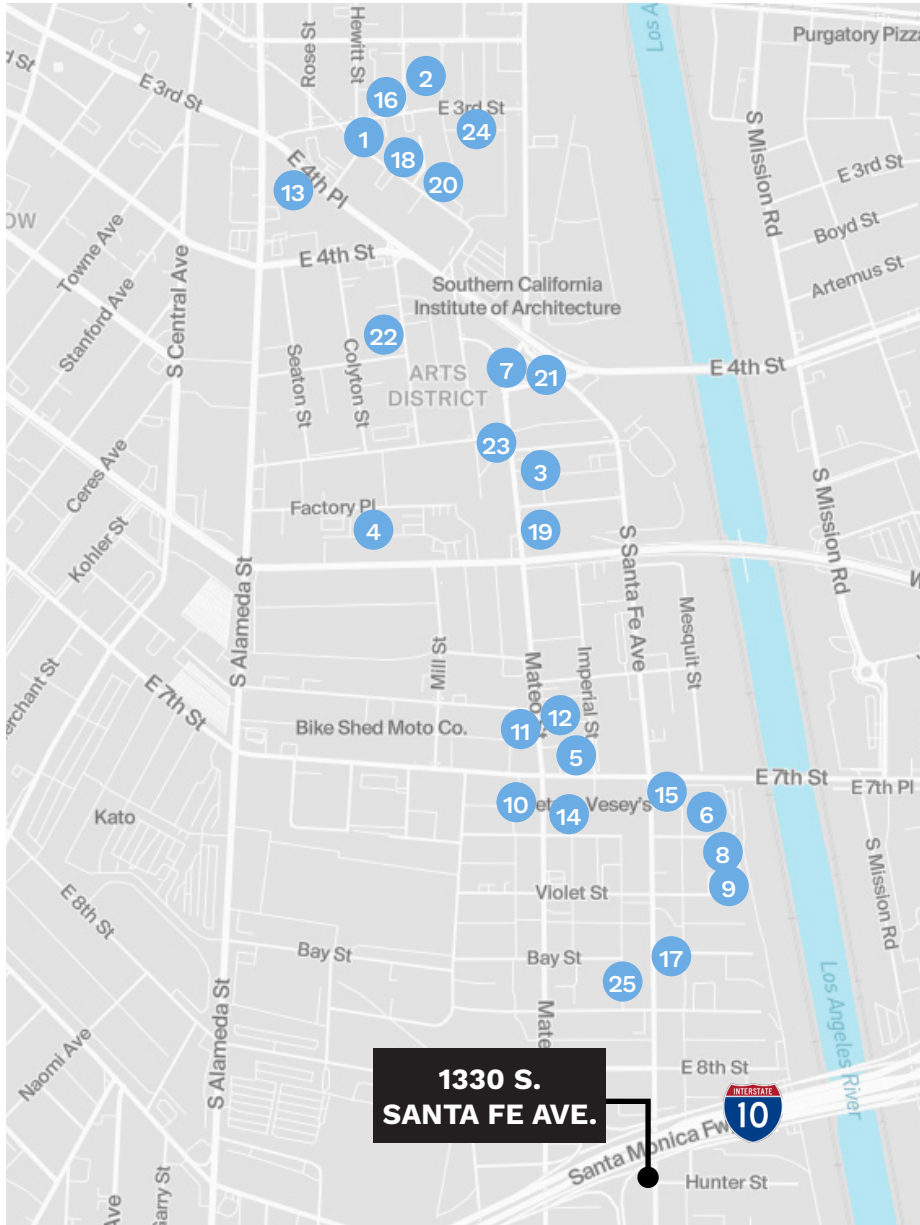
# Suite 300 - Office





Abundance of on-site secure parking

# Arts District



1. Wurstkuche
2. Manuela
3. Zinc Café
4. Factory Kitchen
5. Pizzanista!
6. Bestia
7. Bavel
8. Damian
9. Ditroit
10. Everson Royce Bar
11. Camelia
12. Afuri
13. De La Nonna
14. Lucky's Steakhouse  
(Coming Soon)
15. Yangban Society
16. Prince Street Pizza
17. Soho Warehouse Coffee
18. Groundwork Coffee Co.
19. Blue Bottle Coffee
20. Concierge Coffee
21. Verve Coffee Roasters
22. Urth Caffé
23. Eightfold Coffee
24. Boxx Coffee Roasters
25. Maru Coffee

1330 SO  
SANTA FE



REAL ESTATE

**Caleb Hodge**

**310.430.5025**

**CALEB.HODGE@KWPREALESTATE.COM**

**DRE #02053613**

KWP Real Estate | 151 S. El Camino Drive, Beverly Hills, CA 90212 | 310-887-6400 | kwprealestate.com

KWP Real Estate (Responsible Broker Identity, DRE #00659610) makes no warranty or representation as to the accuracy of the information contained herein. Terms of sale or lease and availability of the property are subject to change or withdrawal without notice.