

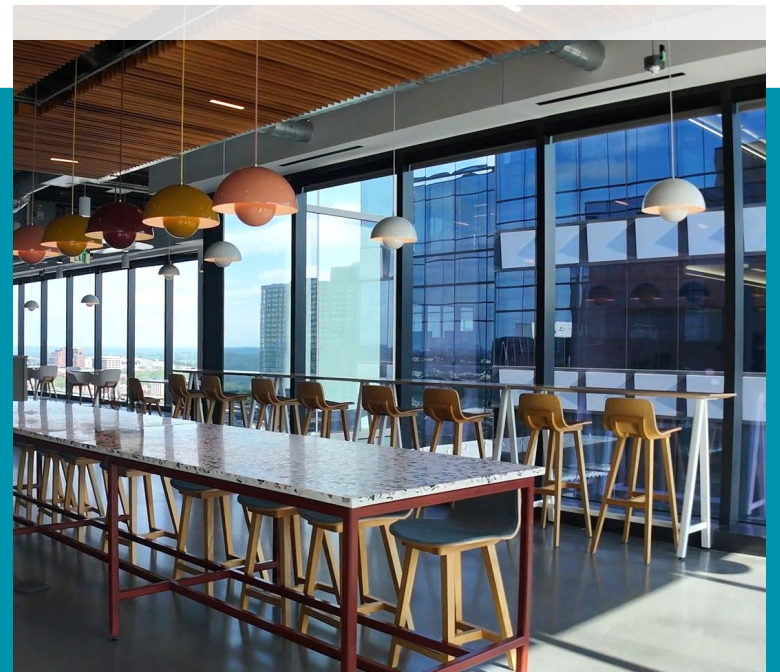


712

WEST PEACHTREE

Atlanta, GA 30308

93,076 SF | FLOORS 17-20



FOR SUBLEASE

712 W Peachtree

93,076 RSF | FLOORS 17-20

Property Highlights

- Floors 18-20 are New and Furnished
- Incredible City Views and Proximity to Tech Square
- 17th Floor – 1st Generation Space
- Space Features a 10,000 SF State of the Art Data Center
- Onsite Backup Generator
- 2 Supplemental HVAC units servicing the Data Center
- Term through 4/30/2033



TIM WRIGHT, CCIM

Director

770 990 6180

tim.j.wright@cushwake.com



FOR SUBLEASE

712 W Peachtree

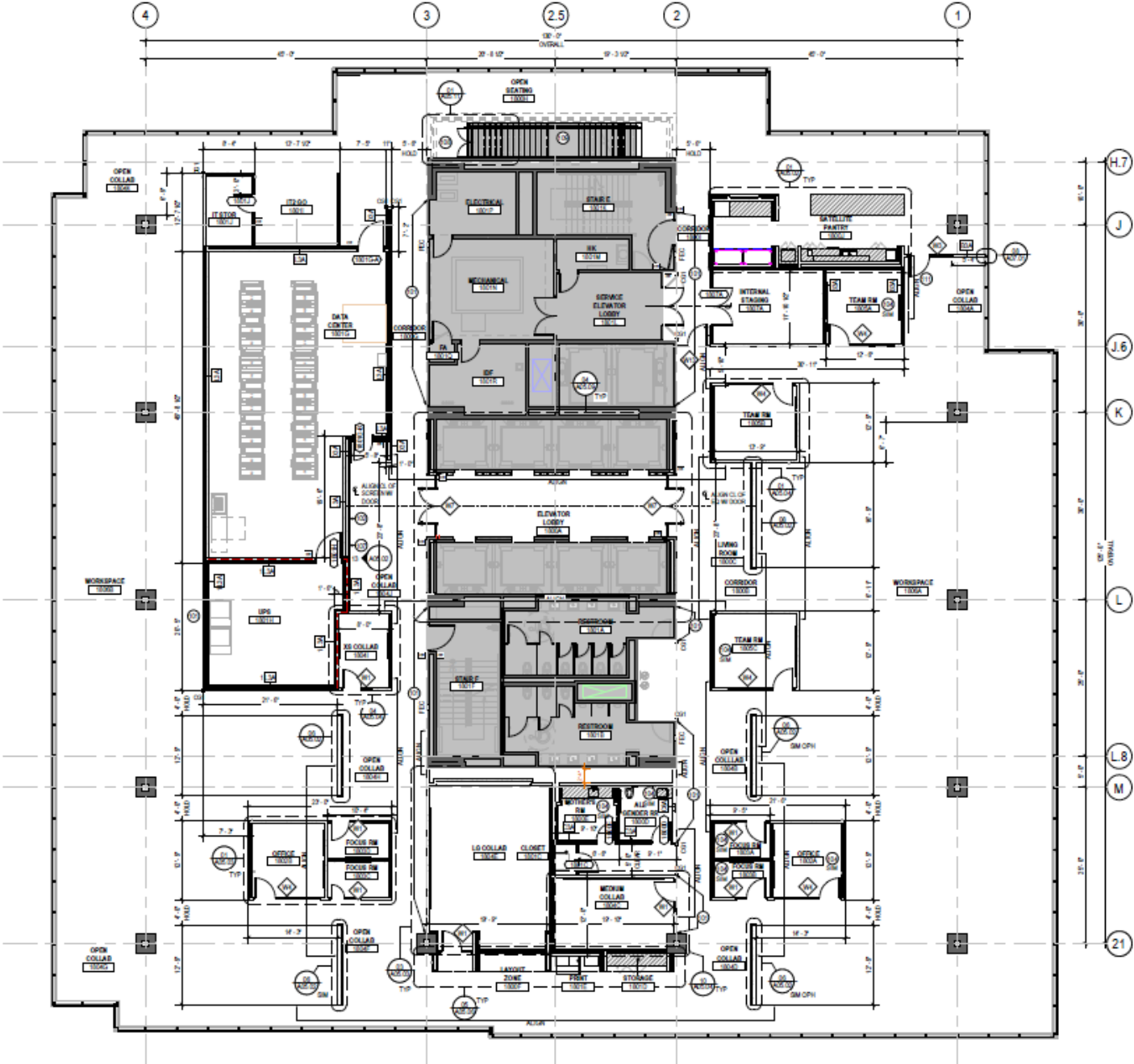
93,076 RSF | FLOORS 17-20



TIM WRIGHT, CCIM
Director
770 990 6180
tim.j.wright@cushwake.com



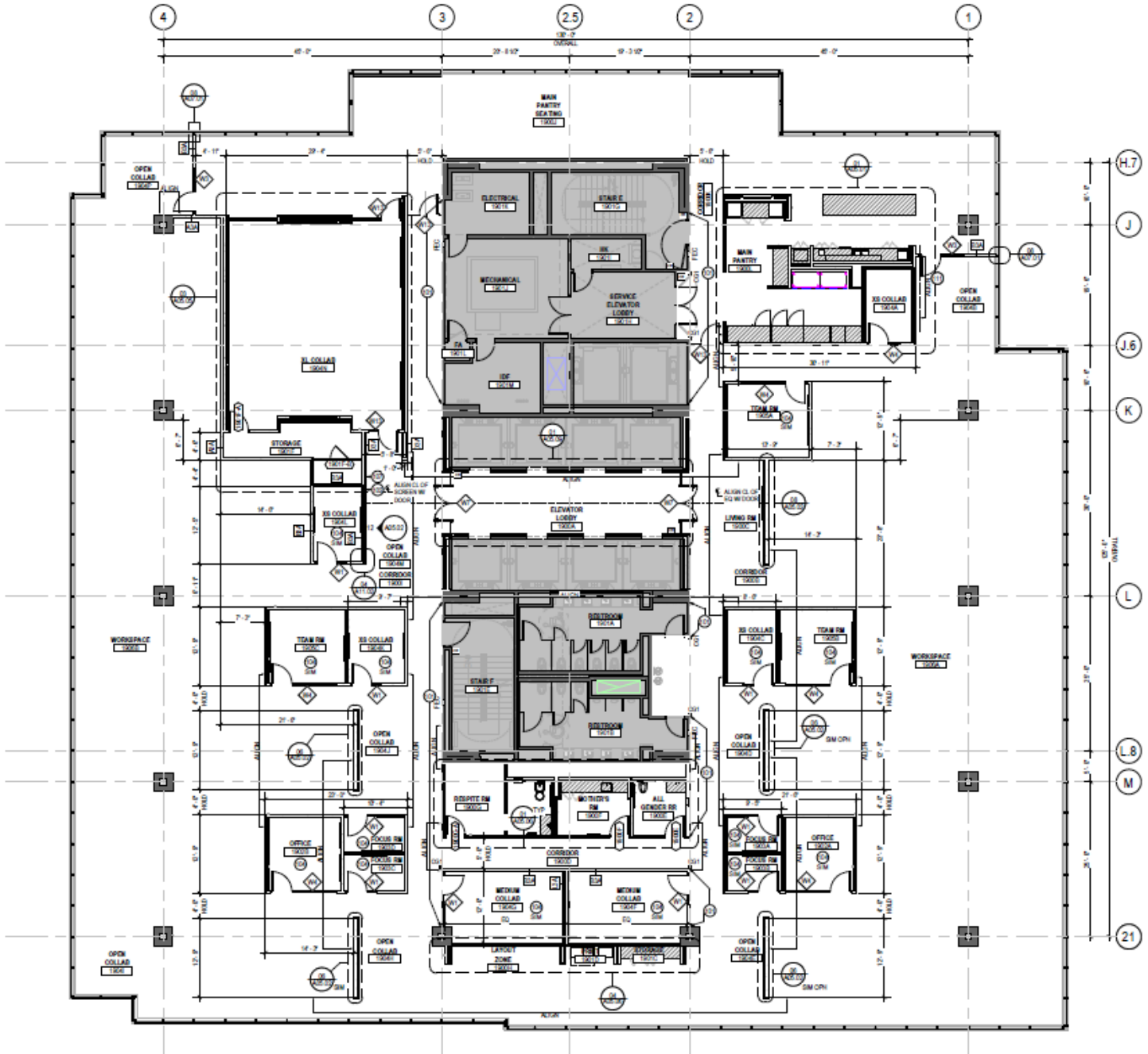
FLOOR 18



TIM WRIGHT, CCIM
 Director
 770 990 6180
tim.j.wright@cushwake.com



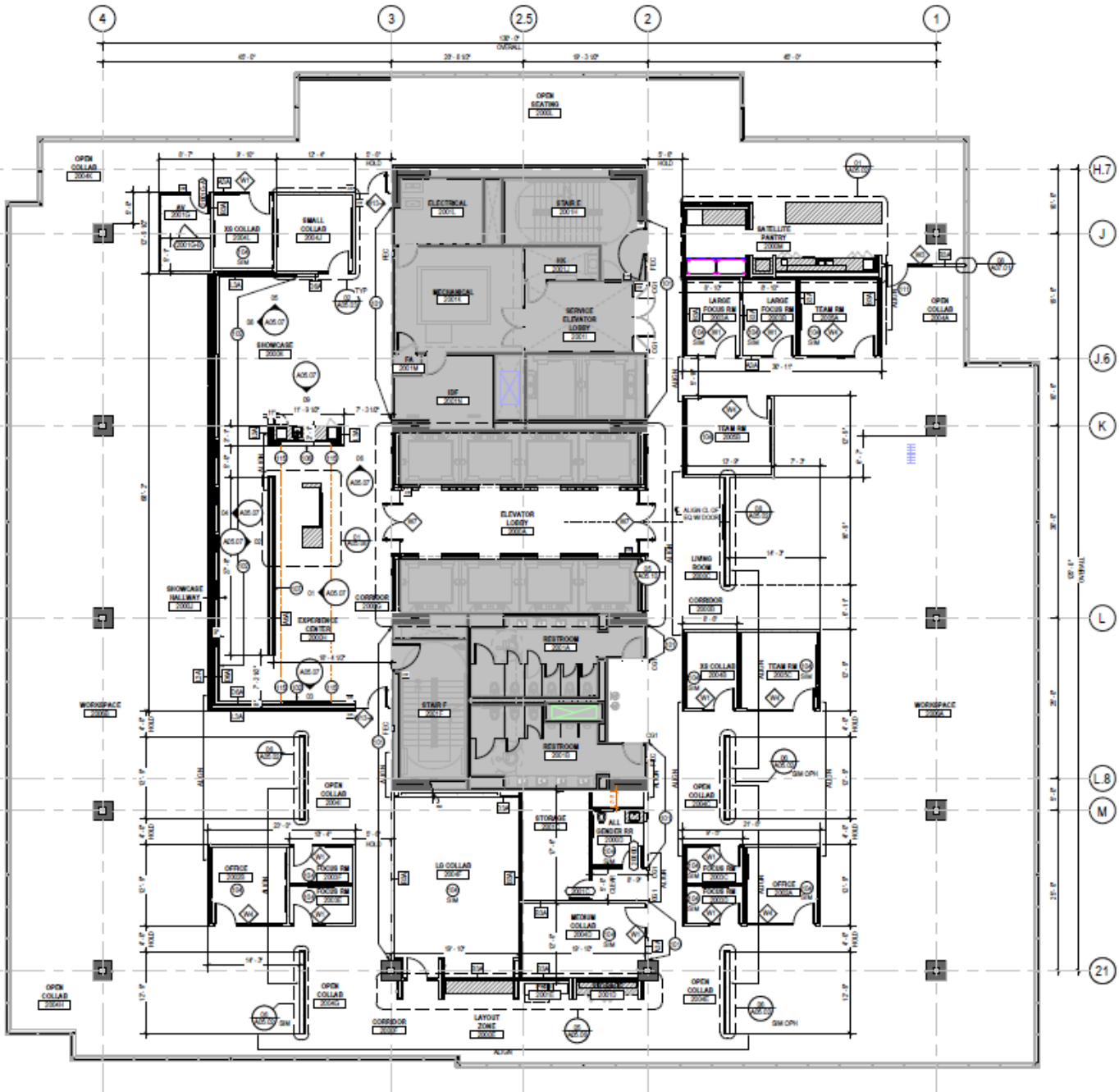
FLOOR 19



TIM WRIGHT, CCIM
Director
770 990 6180
tim.j.wright@cushwake.com



FLOOR 20



TIM WRIGHT, CCIM
Director
770 990 6180
tim.j.wright@cushwake.com



NEARBY AMENITIES

712

Midtown



TIM WRIGHT, CCIM
Director
770 990 6180
tim.j.wright@cushwake.com

FOR SUBLEASE

712 W PEACHTREE

93,076 RSF | FLOORS 17 - 20

TIM WRIGHT, CCIM

Director

770 990 6180

tim.j.wright@cushwake.com

©2026 Cushman & Wakefield. All rights reserved. The information contained in this communication is strictly confidential. This information has been obtained from sources believed to be reliable but has not been verified. NO WARRANTY OR REPRESENTATION, EXPRESS OR IMPLIED, IS MADE AS TO THE CONDITION OF THE PROPERTY (OR PROPERTIES) REFERENCED HEREIN OR AS TO THE ACCURACY OR COMPLETENESS OF THE INFORMATION CONTAINED HEREIN, AND SAME IS SUBMITTED SUBJECT TO ERRORS, OMISSIONS, CHANGE OF PRICE, RENTAL OR OTHER CONDITIONS, WITHDRAWAL WITHOUT NOTICE, AND TO ANY SPECIAL LISTING CONDITIONS IMPOSED BY THE PROPERTY OWNER(S). ANY PROJECTIONS, OPINIONS OR ESTIMATES ARE SUBJECT TO UNCERTAINTY AND DO NOT SIGNIFY CURRENT OR FUTURE PROPERTY PERFORMANCE.



**CUSHMAN &
WAKEFIELD**